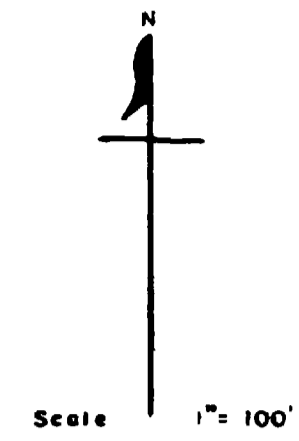
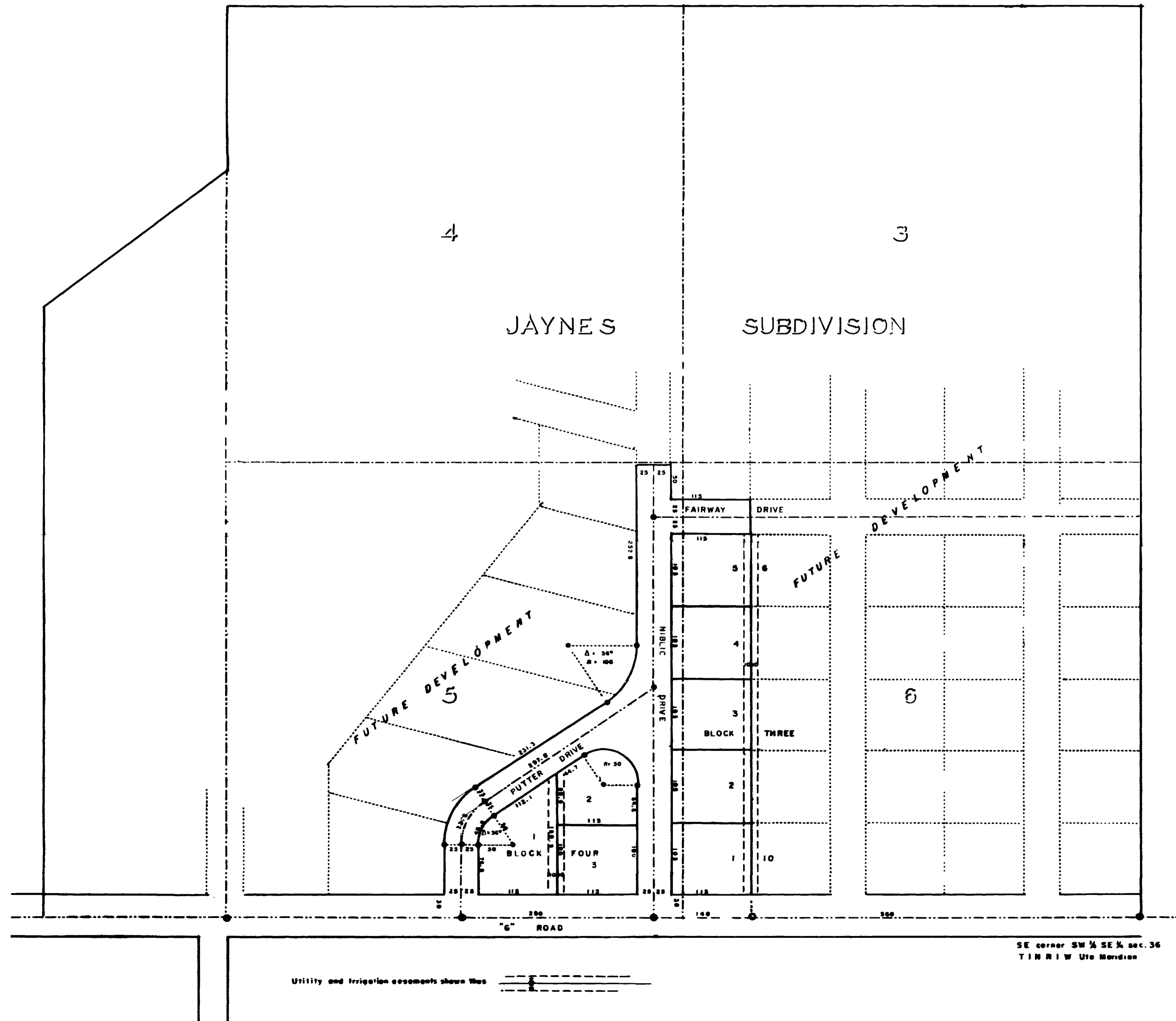


PARTEE HEIGHTS



Lots 3, 4, 5 and 6 of the Jaynes Subdivision also known as the SW 1/4 SE 1/4 sec 36 T1N R1W Ute Meridian



KNOW ALL MEN BY THESE PRESENTS That the undersigned, A L Partee and Howard Stewart, being the owners of the following described land; beginning at a point 560 feet West of the SE corner of the SW 1/4 SE 1/4 section 36 T1N R1W Ute Meridian, thence North 605 feet, thence West 115 feet, thence North 50 feet, thence West 50 feet, thence South 252.8 feet, thence along a curve to the right with a radius of 100 feet through a central angle of 56°, thence S 56° W 231.3 feet, thence along a curve to the left with a radius of 100 feet through a central angle of 56° thence South 106.8 feet, thence East 445 feet to the point of beginning, being a part of lots 5 and 6 of the Jaynes Subdivision, in Mesa County, Colorado. They do hereby set apart and dedicate the roads and drives as shown hereon to the use of the public forever: They do hereby dedicate the utility and irrigation easements as shown hereon, for the construction, operation and maintenance of telephone and power lines, sewer, water and gas mains, irrigation ditches, flumes and conduits and other utilities: They do hereby name said place PARTEE HEIGHTS and on this plat show lots 1 to 5 inc. block 3 and all of block 4 of the said Partee Heights.

It is understood and agreed that the County of Mesa shall not be held liable for the cost of construction of the roads, utilities or ditches within this subdivision.

In witness whereof we have hereunto placed our hands this 24th day of February 1958

A. L. Partee
A L Partee
Howard Stewart
Howard Stewart

STATE OF COLORADO }
County of Mesa }

The foregoing instrument was acknowledged before me by A L Partee and Howard Stewart, this 24th day of February AD 1958
My commission expires February 10, 1960
William H. Nelson
Notary Public

Approved by the Fruitvale Planning Commission this 30th day of January 1958
By Gene M. Watah
Chairman

Approved by the Mesa County Planning Commission this 30th day of JANUARY 1958
By E. Lin Gray
Chairman

Approved by the Board of County Commissioners of Mesa County, this 31st day of JANUARY 1958
By Henry J. Zupper
Chairman

I Roy L George, hereby certify that this is a true and correct plat of survey of the above described land and of the subdivision of the same.
I hereby certify that this instrument was filed in my office at 11:45 o'clock A M., Feb 25 1958 and is recorded in Plat Book No. 9 at Page No. 36

Roy L. George
County Surveyor, R. L. S.

John J. ...
County Clerk and Recorder
By _____
Deputy