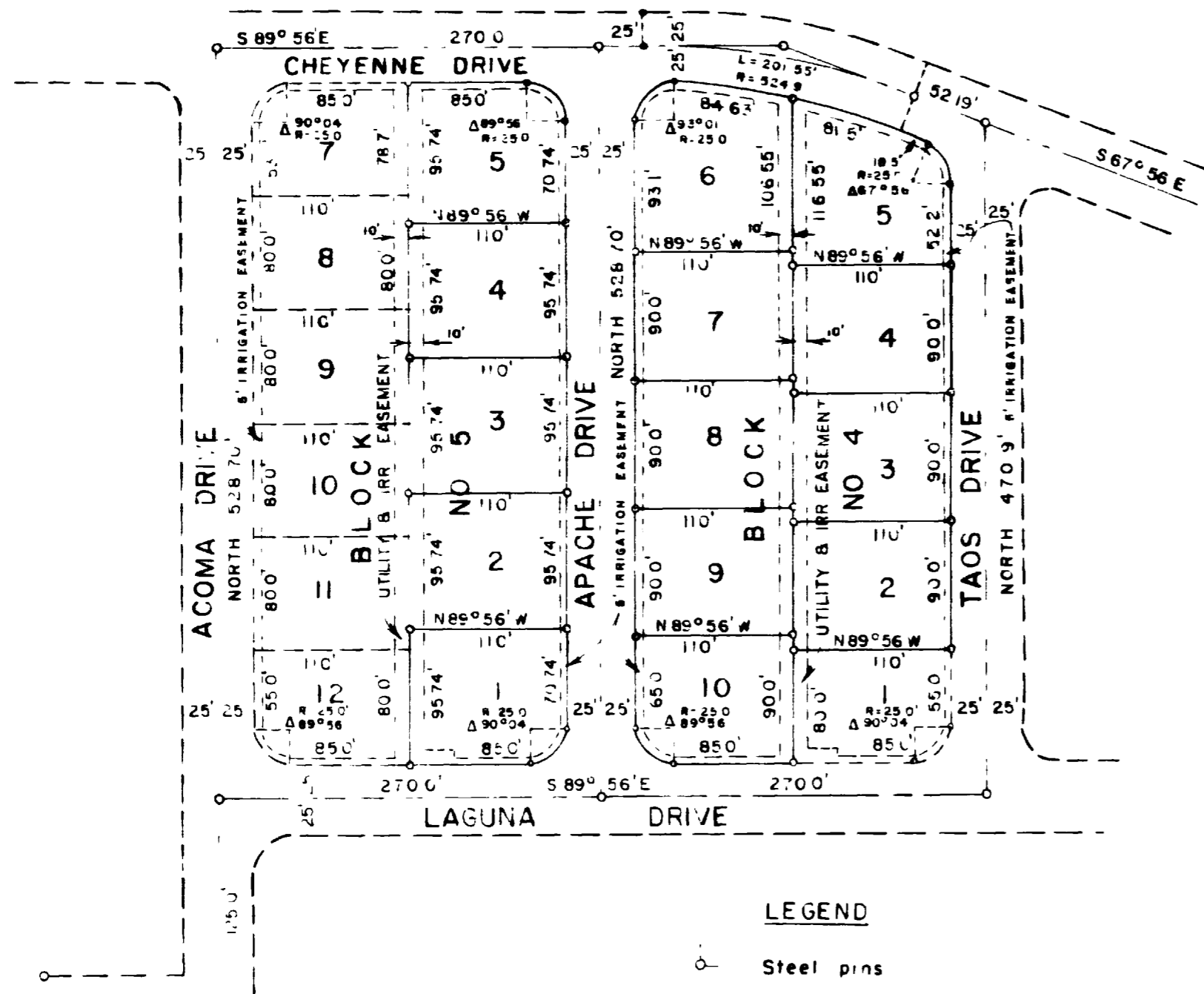


# REPLAT OF BLOCK 4 EXCEPT LOT 1 AND EAST 1/2 OF BLOCK 5

## THE RESERVATION DEDICATION



### KNOW ALL MEN BY THESE PRESENTS

That the undersigned Donald W Stacey  
owner of Block 4, except lot-1 and the East 1/2 of Block 5, (lot 1-6) of the Reservation, a subdivision in the  
County of Mesa, State of Colorado as shown on the official plat of said subdivision as filed with the Mesa County  
Clerk and Recorder on May 18, 1953 Book 9, Page 69

That said owner has caused the real property to be laid out and resurveyed as shown on the accompanying  
plat of Replat of Block 4, (except lot-1) and the East 1/2 of Block 5 of the Reservation

That said replat has no effect on the boundary of Block 4 and Block 5 of the Reservation  
That said replat does not affect the dedication of streets, roads and drives, nor does it affect the  
dedication of easements for utilities and irrigation as shown on the original plat of The Reservation as filed  
with the Mesa County Clerk and Recorder

IN WITNESS WHEREOF, said Donald W Stacey has caused his name to be hereunto subscribed this  
11<sup>th</sup> day of February A.D. 1965

*Donald W Stacey*  
Donald W Stacey

STATE OF COLORADO } ss  
COUNTY OF MESA }

The foregoing instrument was acknowledged before me this 19<sup>th</sup> day of February,  
A.D. 1965, by *Donald W Stacey*

My Commission expires 3-30-66  
Witness my hand and official seal

*Bonnie Hayes*  
Notary Public

### COUNTY PLANNING COMMISSION CERTIFICATE

Approved this 12<sup>th</sup> day of January, A.D. 1965 County Planning Commission of the  
County of Mesa, Colorado

By *Richard J. Jensen*  
Chairman

### CLERK & RECORDER'S CERTIFICATE

STATE OF COLORADO } ss  
COUNTY OF MESA }

I hereby certify that this instrument was filed in my office at 3:51 o'clock P.M.  
Feb 19 1965, and is duly recorded in Plat Book 9, Page 202

885733

*Arnie M. Munton*  
Clerk & Recorder

By \_\_\_\_\_  
Deputy

### BOARD OF COUNTY COMMISSIONER'S CERTIFICATE

Approved this 18 day of Jan, A.D. 1965 Board of County Commissioner's of the  
County of Mesa, Colorado

By *Arthur Jensen*  
Chairman

### ENGINEER'S CERTIFICATE

I Richard J Mandeville, do hereby certify that the accompany replat of Block 4, except lot-1 and  
the East 1/2 of Block 5, of The Reservation, a subdivision of a part of the County of Mesa, has been  
prepared under my direction, and accurately represents a field survey of same

*Richard J. Mandeville*  
Registered Engineer and Land Surveyor

### BOARD OF COUNTY COMMISSIONER'S CERTIFICATE

Reapproved this 19<sup>th</sup> day of February, A.D. 1965. Board of County Commissioner's  
of the County of Mesa, Colorado

By *Arthur Jensen*  
Chairman

|                         |              |               |
|-------------------------|--------------|---------------|
| WESTERN ENGINEERS, INC. |              |               |
| REPLAT OF BLOCK 4       |              |               |
| EXCEPT LOT 1            |              |               |
| AND EAST 1/2 OF BLOCK 5 |              |               |
| THE RESERVATION         |              |               |
| SURVEYED CED            | DRAWN C.J.B. | TRACED G.L.A. |