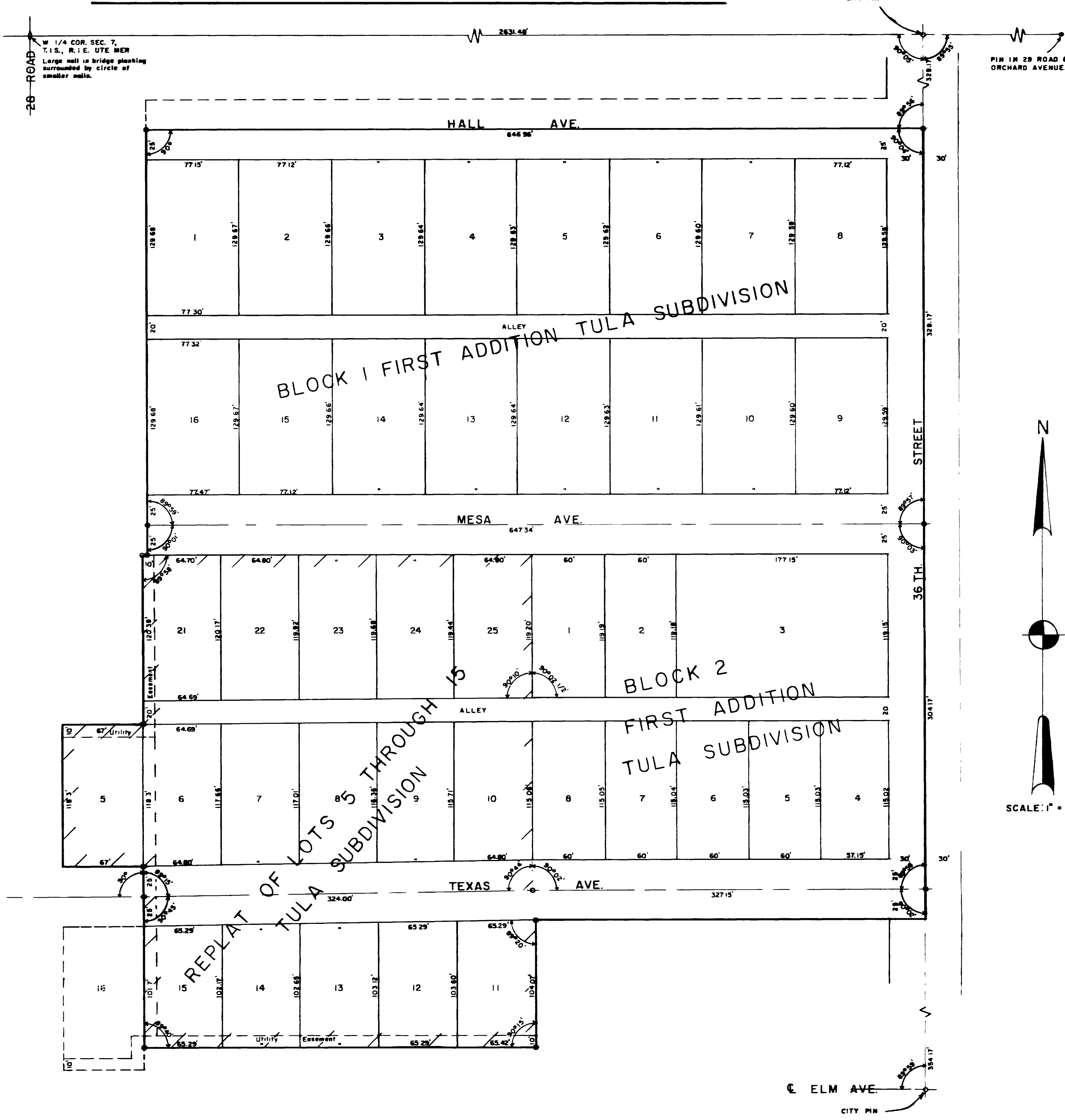


# TULA SUBDIVISION

## FIRST ADDITION-REPLAT OF LOTS 5 THROUGH 15

### DEDICATION



#### KNOW ALL MEN BY THESE PRESENTS:

That the undersigned, BARCO DEVELOPMENT CORP, Charles H. Love, President, W. E. Dufford, Vice President, T. B. Copeland, Secretary Treasurer and; Crescy R. Nidey, Albert J. Craft, Sr and; Angelo Stathopoulos, Alex Anadiotes, Charles George Simadas, are the owners of that real property situated in the City of Grand Junction, Mesa County, Colorado, and described as follows to-wit:  
 The  $1/2$  NE  $1/4$  NE  $1/4$  SW  $1/4$  Sec 7, T.1S., R.1E. of the Ute Meridian  
 The NE  $1/4$  SE  $1/4$  NE  $1/4$  SW  $1/4$  Sec 7, T.1S., R.1E. of the Ute Meridian  
 Lots 5-15 inclusive of original TULA SUBDIVISION.

NOW THEREFORE the undersigned owners; BARCO DEVELOPMENT CORP, Charles H. Love, President, W. E. Dufford, Vice President, T. B. Copeland, Secretary Treasurer and; Crescy R. Nidey, Albert J. Craft, Sr and; Angelo Stathopoulos, Alex Anadiotes, Charles George Simadas; have caused this plat to be prepared and the same to be filed in the office of the County Clerk and Recorder of Mesa County, Colorado, and a duplicate to be filed in the office of the City Clerk of the City of Grand Junction, Colorado, and we do hereby accept the boundaries of the lots as shown on the plat as the boundaries of our respective tracts of land; and we do hereby dedicate to the public forever all streets, alleys, and easements as shown on said plat

AND FURTHERMORE, we do hereby affix the name of "TULA SUBDIVISION-FIRST ADDITION-REPLAT OF LOTS 5 THROUGH 15" to said plat

IN WITNESS WHEREOF we have hereunto subscribed our names on this 24 day of January, 1961.

BARCO DEVELOPMENT CORP

*W. E. Dufford*  
W. E. Dufford, Vice President

*Charles H. Love*  
Charles H. Love, President  
CORPORATION SEAL

*T. B. Copeland*  
T. B. Copeland, Secretary Treasurer

*Crescy R. Nidey*  
Crescy R. Nidey

*Albert J. Craft, Sr*  
Albert J. Craft, Sr

*Angelo Stathopoulos*  
Angelo Stathopoulos

*Alex Anadiotes*  
Alex Anadiotes

*Charles George Simadas*  
Charles George Simadas

STATE OF COLORADO  
 COUNTY OF MESA <sup>55</sup>

The foregoing instrument was acknowledged before me this 24 day of January, A. D. 1961, by Charles H. Love, President, W. E. Dufford, Vice President and T. B. Copeland, Secretary Treasurer, of the BARCO DEVELOPMENT CORP, and Crescy R. Nidey, Albert J. Craft, Sr, and Angelo Stathopoulos, Alex Anadiotes, and Charles George Simadas

My Commission expires May 14, 1962  
 Witness my hand and official seal

*Christie L. Bufford*  
 Notary Public

#### CITY PLANNING & ZONING COMMISSION CERTIFICATE

Approved this 25<sup>th</sup> day of January, A. D. 1961  
 City Planning & Zoning Commission of the City of Grand Junction, Colorado

By *Edmund B. Nelson*  
 Chairman

#### SURVEYOR'S CERTIFICATE

I, John C. Shepherd, do hereby certify that the accompanying plat of TULA SUBDIVISION - FIRST ADDITION-REPLAT OF LOTS 5 THROUGH 15, a subdivision of a part of the City of Grand Junction, Colorado, has been prepared under my direction, and accurately represents a field survey of same.

*John C. Shepherd*  
 Registered Engineer & Land Surveyor

#### ACTION OF THE CITY COUNCIL

This plat of the TULA SUBDIVISION-FIRST ADDITION-REPLAT OF LOTS 5 THROUGH 15 is approved and accepted for filing on this 15<sup>th</sup> day of FEBRUARY, 1961

Attest *William J. Tolson*  
 City Clerk

*Charles G. McManis*  
 President of the Council

#### ACTION OF THE CITY

This plat of TULA SUBDIVISION-FIRST ADDITION-REPLAT OF LOTS 5 THROUGH 15 is approved for filing on this 25<sup>th</sup> day of January, 1961

*Jim Deary*  
 City Manager

*Paul A. Alstatt*  
 City Engineer

#### CLERK AND RECORDER'S CERTIFICATE

STATE OF COLORADO  
 COUNTY OF MESA <sup>55</sup>  
 I hereby certify that this instrument was filed in my office at \_\_\_\_\_ o'clock \_\_\_\_\_ M \_\_\_\_\_  
 \_\_\_\_\_ A. D. 1961, and is duly recorded in Plat Book No \_\_\_\_\_, Page \_\_\_\_\_

\_\_\_\_\_  
 Clerk and Recorder

Fees \$ \_\_\_\_\_ By \_\_\_\_\_ Deputy