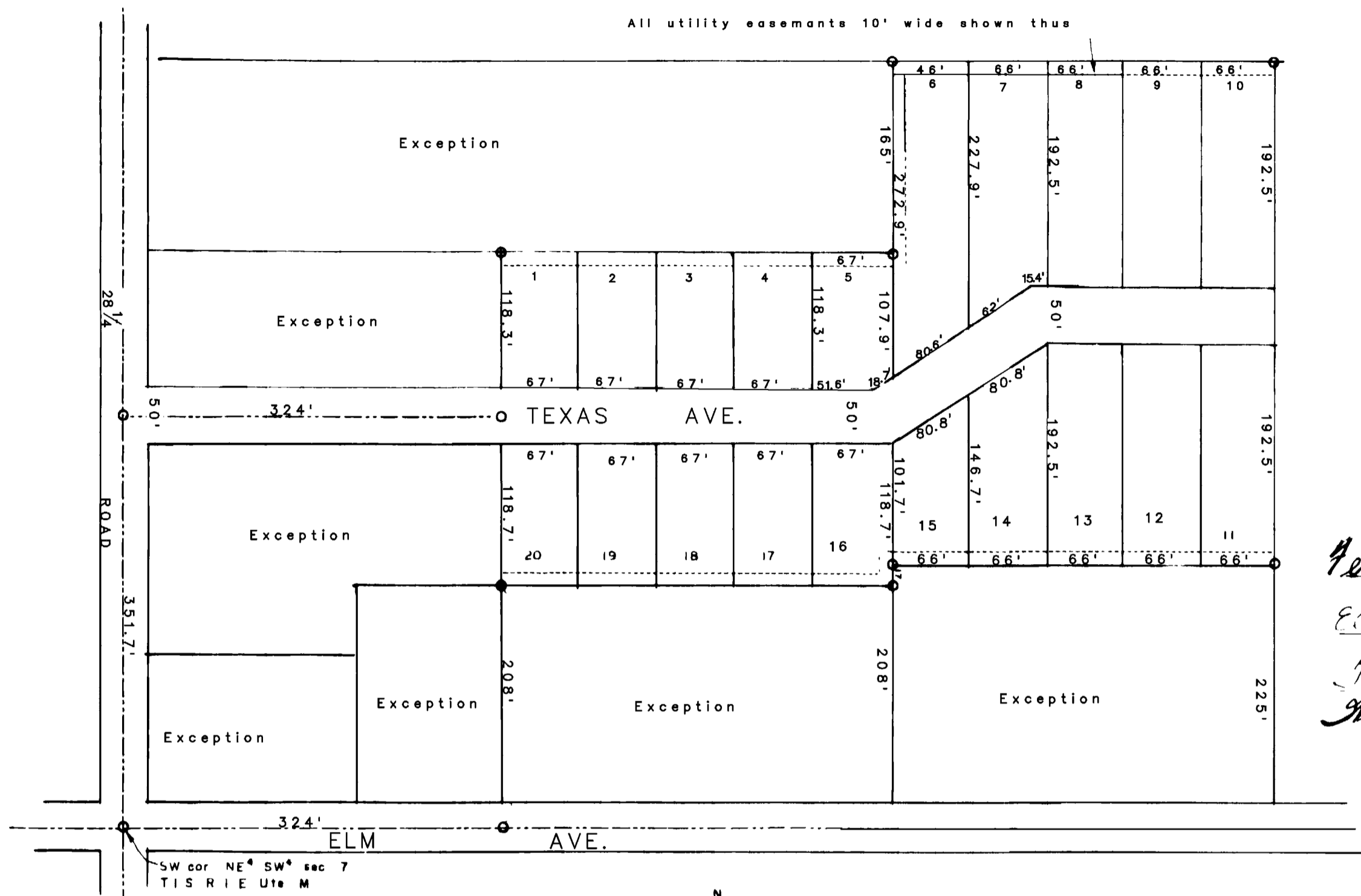


All utility easements 10' wide shown thus



KNOW ALL MEN BY THESE PRESENTS That Angelo Stathopoulos, being the owner of the following described land, beginning at a point 324 feet East and 208 feet North of the SW corner of the NE 1/4 SW 1/4 section 7 T1S R1E Ute Meridian, thence North 287 feet, thence East 335 feet, thence South 287 feet, thence West 335 feet to the point of beginning, also the W 1/2 of the SE 1/4 NE 1/4 SW 1/4, except the South 225 feet thereof, of section T1S R1W Ute M has caused the same to be surveyed and platted as shown hereon, and does hereby dedicate the avenues and easements to the use of the public forever. In witness whereof I have hereunto affixed my hand.

*Angelo Stathopoulos*

Gerald W. Wicker, Joan E. Wicker, Richard W. Sofford, Kenneth A. Daily, Dorothy J. Daily, Ferrel C. Carpenter, Elva L. Carpenter, T. H. Ray, Wilda Lee Ray, Clay B. Holmes and Margie G. Holmes, being the owners of a strip of land 50 feet in width, 25 feet on each side of the following described center line, beginning at a point 351.7 feet North of the SW corner of the NE 1/4 SW 1/4 section 7 T1S R1E Ute Meridian, thence East 324 feet. Do hereby dedicate said strip of land to the use of the public forever for road purposes. In witness whereof we have hereunto affixed our hands.

*Ferrel C. Carpenter*     *Gerald W. Wicker*     *Clay B. Holmes*  
*Elva L. Carpenter*     *Joan E. Wicker*     *Margie G. Holmes*  
*T. H. Ray*     *Richard W. Sofford*     *Kenneth A. Daily*  
*Wilda Lee Ray*     *Dorothy J. Daily*

STATE OF COLORADO }  
County of Mesa        } SS

The foregoing instruments were acknowledged before me by Angelo Stathopoulos, Gerald W. Wicker, Joan E. Wicker, Richard W. Sofford, Kenneth A. Daily, Dorothy J. Daily, Ferrel C. Carpenter, Elva L. Carpenter, T. H. Ray, Wilda Lee Ray, Clay B. Holmes and Margie G. Holmes, on the 27<sup>th</sup> day of April, A. D. 1955.

My commission expires January 6, 1959  
*L. M. Finney*  
Notary Public

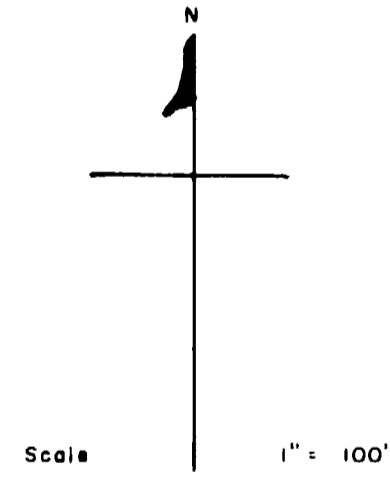
I hereby certify that this is true and correct plat of survey of the above described land and of the subdivision of the same.

*Ray S. George*  
County Surveyor, R. S.

Approved by the Mesa County Planning Commission *Henry J. Tupper*

Approved and accepted by the County Commissioners of Mesa County, Colorado

*Henry J. Tupper*  
Chairman



Scale 1" = 100'  
MESA COUNTY COLORADO  
**TULA**  
**SUBDIVISION**