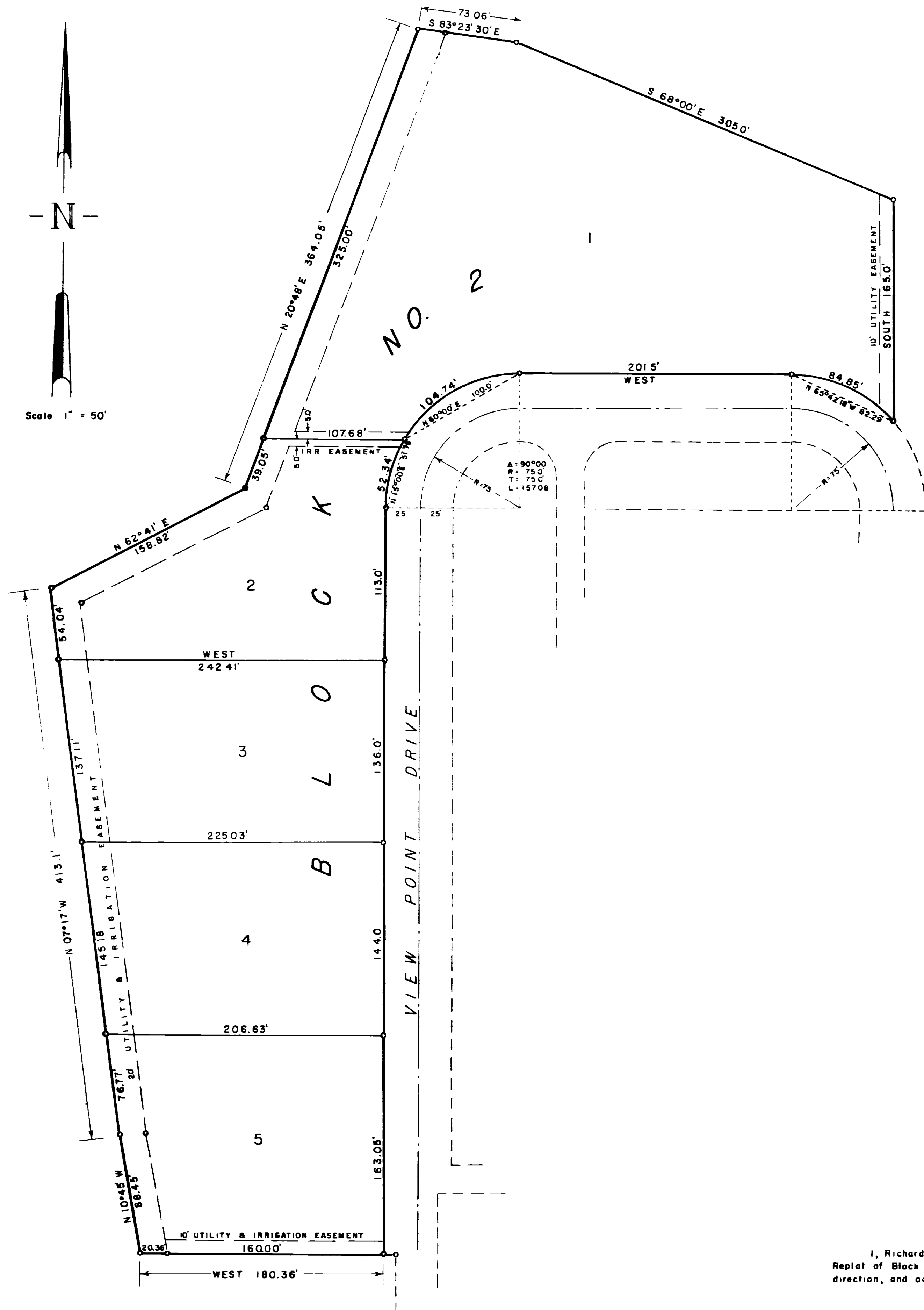


Scale 1" = 50'



VIEW POINT SUBDIVISION REPLAT OF BLOCK NO. 2



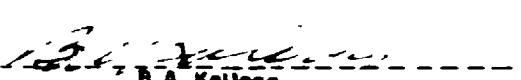

DEDICATION

KNOW ALL MEN BY THESE PRESENTS

That the undersigned Harold H. Shults, Minnie G. Shults, B. A. Kellogg, and Evelyn M. Kellogg, the owners of all of Block 2, View Point Subdivision, Mesa County, Colorado, according to the Amended and Supplemented Plat thereof filed February 11, 1960 in Plat Book 9, Page 92 of the records of the County Clerk and Recorder of Mesa County, desiring to change the lot lines within said Block 2, do hereby lay out and file this View Point Subdivision, Replat of Block 2 and do hereby specify and agree

- 1 That said replat is required to change lot lines within said Block 2 of View Point Subdivision and does not change the outside boundaries of said Block 2 or any portion of said Subdivision not shown on this plat
- 2 That the changes shown hereon are in accordance with the Zoning Resolution for Mesa County Consolidated Zoning Area.
- 3 That all Rights of Way for streets and roads and all utility and irrigation easements as shown on the Amended and Supplemented Plat of View Point Subdivision remain unchanged.
- 4 That said owners do hereby dedicate all new easements shown on the accompanying plat and labeled as utility and irrigation easements as easements for installation and maintenance of installations as telephone and electric lines, poles and cables, storm and sanitary sewer mains, gas pipelines, irrigation ditches, flumes and conduits
- 5 That all expenses for installation of utilities or ditches referred to above, for grading or landscaping, and for street graveling or improvements shall be financed by the seller or purchaser--not the County of Mesa.
- 6 That Harold H. Shults and Minnie G. Shults are the co-owners of Lot 3, Block 2 of View Point Subdivision as shown by this Replat of said Block 2, and that B. A. Kellogg and Evelyn M. Kellogg are the co-owner of all other lots in said Block 2 as shown by this Replat

IN WITNESS WHEREOF, said Harold H. Shults, Minnie G. Shults, B. A. Kellogg and Evelyn M. Kellogg have caused their names to be hereunto subscribed this 9th day of January, A. D., 1962


 Harold H. Shults

 Minnie G. Shults

 B. A. Kellogg

 Evelyn M. Kellogg

STATE OF COLORADO }
COUNTY OF MESA }

The foregoing instrument was acknowledged before me this 9th day of January, 1962, by Harold H. Shults, Minnie G. Shults, B. A. Kellogg and Evelyn M. Kellogg.

My Commission expires February 20, 1963
Witness my hand and official seal


 Ruth H. Sutton
 Notary Public

CLERK AND RECORDER'S CERTIFICATE

STATE OF COLORADO }
COUNTY OF MESA }

I hereby certify that this instrument was filed in my office at 2:50 o'clock P. M.,
Jan 30 A. D., 1962, and is duly recorded in Plat Book No. 9, Page 148.

812,910

Fees \$6.00


 Annie M. Donaton
 Clerk and Recorder
 By _____
 Deputy

COUNTY PLANNING COMMISSION CERTIFICATE

Approved this 9th day of January, A. D., 1962.
County Planning Commission of the County of Mesa, Colorado.


 Mary Bowman
 Chairman

BOARD OF COUNTY COMMISSIONER'S CERTIFICATE

Approved this 30 day of March, A. D., 1962.
Board of County Commissioners of the County of Mesa, Colorado.


 Arthur J. Jensen
 Acting Chairman

SURVEYOR'S CERTIFICATE

I, Richard J. Mandeville, do hereby certify that the accompanying plat of View Point Subdivision, Replat of Block 2, a subdivision of a part of the County of Mesa, has been prepared under my direction, and accurately represents a field survey of same


 Richard J. Mandeville
 Registered Engineer & Land Surveyor

WESTERN ENGINEERS, INC.
 VIEW POINT SUBDIVISION
 REPLAT OF BLOCK NO. 2
 MESA COUNTY, COLORADO
 SURVEYED G.A.S. DRAWN R.J.M. TRACED F.B.C.
 Grand Junction, Colo. Dwg. I-96-4 January 1962