

DEDICATION

Known to men as these presents:  
That the undersigned MILO T. MUNFRADA and LYDA J. MUNFRADA are the owners of that real property situated in the County of Mesa, State of Colorado, lying in the NE 1/4 NE 1/4 of Sec. 26 T1S R1W U.M. and described as follows:

SE 1/4 NE 1/4 NE 1/4 Sec 26 T1S R1W U.M.  
Except South 264 ft. thereof  
Also except beginning 264 ft. North of SE corner of said described SE 1/4 NE 1/4 NE 1/4 thence West 150 ft., thence North 70 ft., thence East 150 ft., thence South to beginning.  
Also except beginning at the NE corner SE 1/4 NE 1/4 NE 1/4 Sec. 26 T1S R1W U.M. thence South 196 ft., thence West 165 ft., thence North 196 ft., thence East 105 ft. to point of beginning; subject to a 10 ft. easement on the West for ditch rights.

as shown by the accompanying plat thereon.  
That the said MILO T. MUNFRADA and LYDA J. MUNFRADA have caused the said real property to be laid out and surveyed as MUNFRADA SUBDIVISION, a subdivision of a part of the County of Mesa.

That the said MILO T. MUNFRADA and LYDA J. MUNFRADA hereby dedicate and set apart all of the streets and roads, as shown on the accompanying plat, to the use of the public forever and hereby dedicates those portions of said real property which are labeled as utility easements on the accompanying plat as easements for the installation and maintenance of telephone and electric lines, poles and underground cables; storm and sanitary sewer mains; water mains; gas pipe lines; and those portions of said real property which are labeled as irrigation easements on the accompanying plat as easements for the installation and maintenance of irrigation ditches, flumes and conduits;

That all expenses involving necessary improvements for a water system, sanitary sewer system, gas service, electrical service, grading and landscaping, storm sewer system, curbs and gutters, street pavement and sidewalks, shall be financed by the purchaser or seller of the County of Mesa.

In witness whereof, said MILO T. MUNFRADA and LYDA J. MUNFRADA have caused their names to be hereunto subscribed this 28th day of February, A.D. 1958  
By Milo T. Munfrada  
Lyda J. Munfrada

STATE OF COLORADO } ss  
COUNTY OF MESA } ss  
I, the undersigned, was acknowledged before me this 28th day of February, A.D. 1958 by MILO T. MUNFRADA and LYDA J. MUNFRADA.  
My commission expires April 4, 1961  
Witness my hand and official seal  
Edna Williams  
Notary Public

SURVEYOR'S CERTIFICATE

I, Gerard H. Pesman, do hereby certify that the accompanying plat of MUNFRADA SUBDIVISION, a subdivision of a part of the County of Mesa, has been prepared by me, and accurately represents a survey of same.  
Gerard H. Pesman  
Colo. Reg. Prof. Engr. & Land Surveyor 2376

BOARD OF COUNTY COMMISSIONERS CERTIFICATE

Approved this 26th day of February, A.D. 1958  
Board of County Commissioners of the County of Mesa, Colorado.  
By James J. Supper  
Chairman

COUNTY PLANNING COMMISSION CERTIFICATE

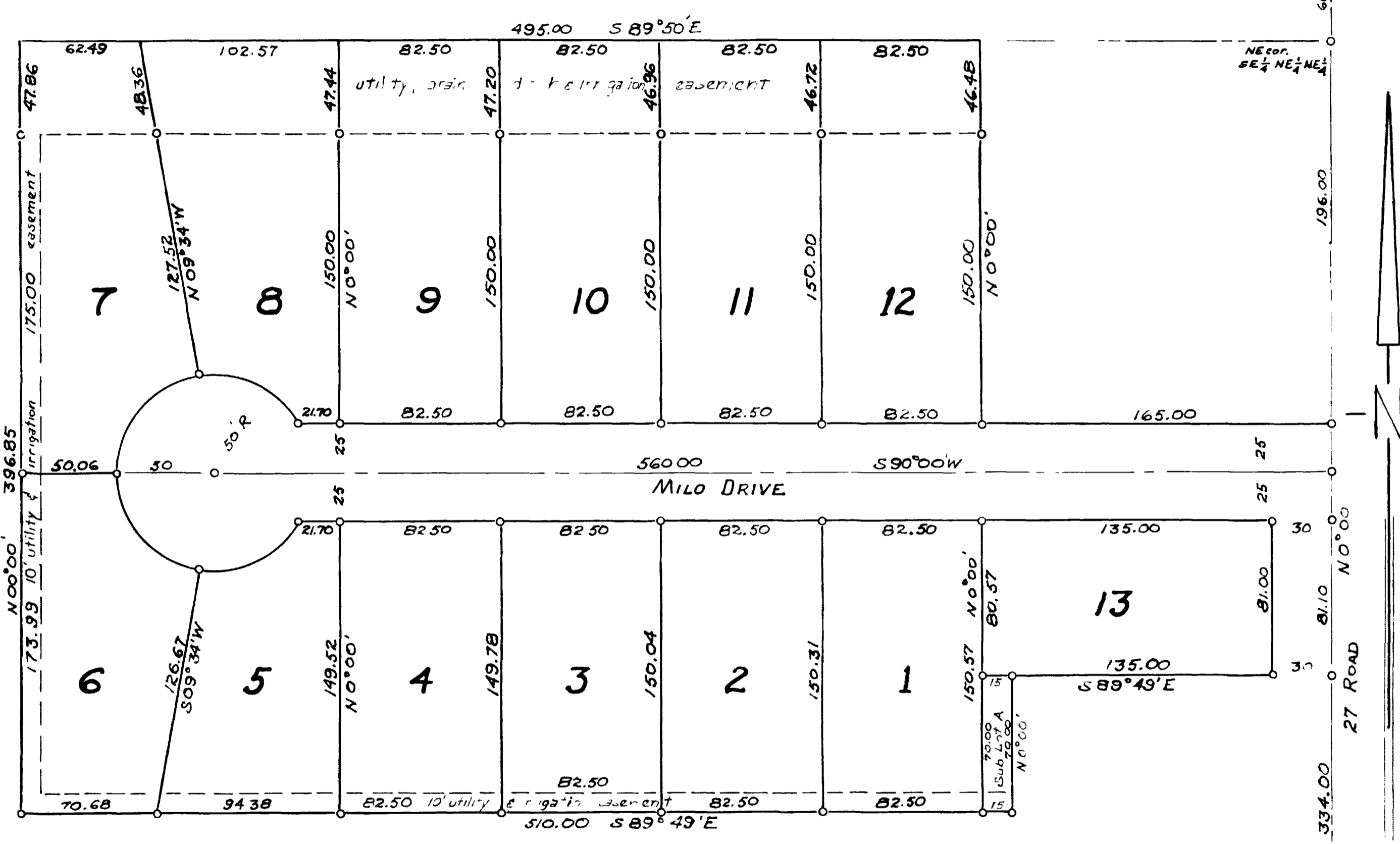
Approved this 28th day of February, A.D. 1958  
County Planning Commission of the County of Mesa, Colorado.  
By James J. Supper  
Chairman

DISTRICT PLANNING COMMISSION CERTIFICATE

Approved this 27 day of Feb, A.D. 1958  
West Orchard Mesa District Planning Commission in the County of Mesa, Colorado.  
By James J. Supper  
Chairman

CLERK AND RECORDERS CERTIFICATE

STATE OF COLORADO } ss  
COUNTY OF MESA } ss  
712601  
I hereby certify that this instrument was filed in my office at 11:50 a.m. on FEB 28 AD 1958 and is duly recorded in Plat Book No 9 Page 37  
Gerard H. Pesman  
Recorder  
By \_\_\_\_\_



LEGEND & NOTES  
+ corner monuments found in place  
o 3/8" x 10" spike mcn. set by GHP  
--- property line  
- - - - - easement line

Bearings shown based on E. U.S. Highway 50 bearing S 64° 53' E  
All property lines are NORTH, SOUTH, EAST, or WEST unless marked otherwise

SCALE  
1 INCH = 50 FEET

PLAT OF  
**Munfrada Subdivision**

SUBDIVIDED BY  
MILO T. MUNFRADA & LYDA J. MUNFRADA  
ENGINEERING BY  
GERARD H. PESMAN  
610 ROAD - GRAND JUNCTION - COLO.  
FEBRUARY 7, 1958