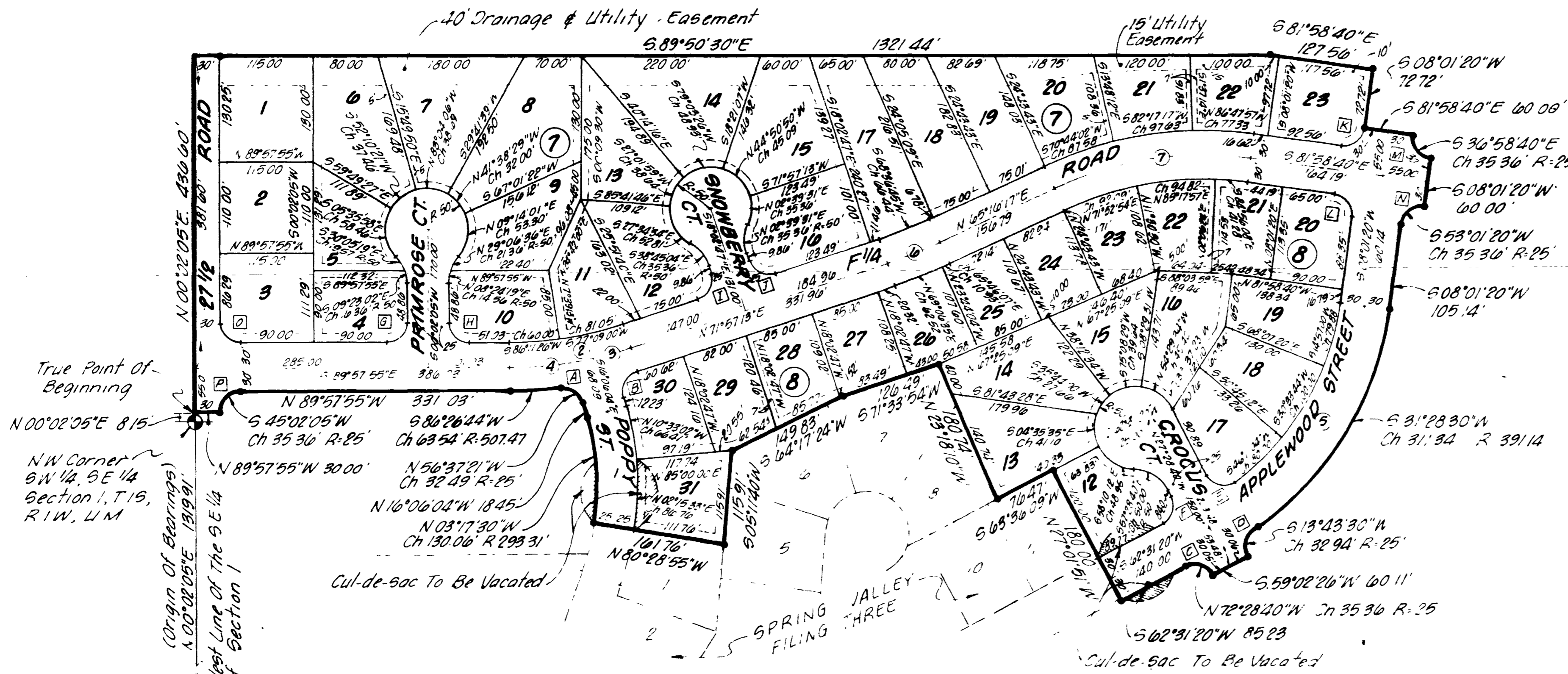
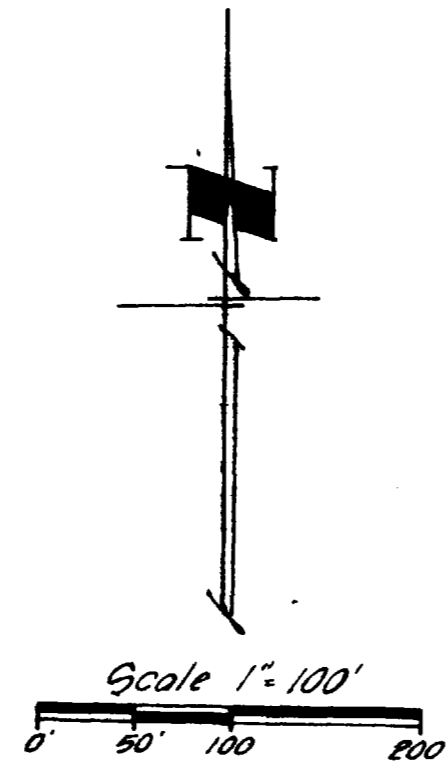


SPRING VALLEY FILING FOUR



True Point of Beginning
 N 00° 02' 05" E 815'
 N.W. Corner
 Section 1, T.19, R.1W, U.M.
 (Origin of Bearings)
 1.00° 02' 05" E 1819.91'
 West Line of the S.E. 1/4
 of Section 1
 South 1/4 Corner
 Section 1, T.19, R.1W
 Ute Meridian

STREET CENTERLINE CURVE DATA

CURVE	DELTA	RADIUS	CHORD	CHORD BEARING	TANGENT	ARC LENGTH
1	25° 37' 08"	318.31'	141.15'	S 03° 17' 29" E	21.37'	142.33'
2	18° 04' 52"	477.47'	150.05'	S 80° 59' 39" W	75.97'	150.68'
3	05° 53' 50"	477.47'	49.12'	S 74° 54' 08" W	75.97'	49.14'
4	12° 11' 02"	477.47'	101.34'	S 83° 56' 34" W	75.97'	101.53'
5	52° 30' 00"	361.14'	330.71'	S 35° 16' 20" W	186.00'	343.52'
6	06° 40' 56"	600.00'	69.92'	S 68° 36' 25" W	35.03'	69.98'
7	32° 45' 03"	430.00'	242.46'	N 81° 38' 49" E	126.36'	245.79'

RETURN DATA

CURVE	DELTA	RADIUS	CHORD	CHORD BEARING	TANGENT	ARC LENGTH
A	81° 02' 32"	25.00'	32.49'	S 56° 37' 21" E	21.37'	35.36'
B	88° 03' 18"	25.00'	34.75'	N 27° 55' 34" E	24.17'	38.42'
C	90° 00' 00"	25.00'	35.36'	N 72° 28' 40" W	25.00'	39.27'
D	82° 24' 19"	25.00'	32.94'	S 13° 43' 30" W	21.37'	35.96'
E	89° 23' 59"	25.00'	38.13'	N 77° 10' 39" W	29.48'	43.37'
F	90° 00' 00"	25.00'	35.36'	S 17° 31' 20" W	25.00'	39.27'
G				S 45° 02' 05" W		
H				N 44° 57' 55" W		
I				S 26° 57' 13" W		
J				N 63° 02' 47" W		
K				S 53° 01' 20" W		
L				S 36° 58' 40" E		
M				S 36° 58' 40" E		
N				S 53° 01' 20" W		
O	90° 00' 00"	25.00'	35.36'	N 44° 57' 55" W	25.00'	39.27'
P	90° 00' 00"	25.00'	35.36'	N 45° 02' 05" E	25.00'	39.27'

- ⊙ Indicates Street Centerline Curve
- ⊙ Indicates Lot Return Curve
- ⊙ Indicates Block Number

- NOTE**
- All Easements Are 20' Utility, Drainage And Irrigation Easements 10' Each Side Of Lot Lines Except Where Noted
 - 10' Planting And Utility Easement On Front Of All Lot Lines

AREA QUANTITIES

Total Number Of Lots-----48
 Total Acres-----16.89
 Total Acres In Lots-----12.06
 Total Area In Public ROW-----4.834 Ac

- ⊙ Indicates Mesa County Brass Cap
- ⊙ 5/8" Rebar & Monument Cap Set In Concrete By N.H.P.R.
- ⊙ 5/8" Rebar & Monument Cap Set At All Lot Corners

14th April
 Thomas J. [Signature]
 April
 January 30, 1980
 # 1110 886
 A June 21 1980
 Earl Sawyer
 21 April
 K.H. Calvin Lawrence H. [Signature] Harvey H. [Signature]
 Ronald [Signature] Levi [Signature] Ronald P. Rich, P.E.
 Richard L. [Signature]
 Roger C. Head 6-14-76

12

**SPRING VALLEY
FILING FOUR**

PREPARED BY
NELSON, HALEY, PATTERSON, & QUIRK INC
 ENGINEERING CONSULTANTS
 GRAND JUNCTION, COLORADO FEBRUARY, 1976