

LUMLEY SUBDIVISION REPLAT OF BLOCKS 2 & 3

DEDICATION

KNOW ALL MEN BY THESE PRESENT:

That the undersigned, Gerald W. Wieker, Harry H. Castle and Basil E. Robinson are the owners of that real property situated in the County of Mesa, State of Colorado, and lying in the NW 1/4 Section 31, Township 1 South, Range 1 East of the Ute Meridian, as shown by the accompanying plat thereof: said tract being more specifically described by metes and bounds as follows:

Beginning at a point which bears S00°02'W 30.0 feet from the NW Corner of Section 31, T1S, R1E, of the Ute Meridian thence East 481.4 feet, thence S00°02'W 96.5 feet, thence along the arc of a 375 ft. radius curve to the right 184.35 feet (the chord of which bears S11°49'30"W 153.26 feet) thence S23°37'W 4.19 feet, thence along the arc of a 225 ft. radius curve to the left 185.22 feet, (the chord of which bears S00°02'W 180.04 feet), thence S23°33'E 4.19 feet, thence along the arc of a 375 feet radius curve to the right 154.35 feet, (the chord of which bears S11°45'30"E 153.26 feet) thence S00°02'W 135.82 feet, thence West 263.3 feet, thence N45°00'W 42.56 feet, thence West 188.0 feet, thence N00°02'E 69.0 feet to the point of beginning.

That the said owners have caused the said real property to be laid out and surveyed as Lumley Subdivision- Replat of Blocks 2 and 3, a subdivision of a part of the County of Mesa;

That said owners do hereby dedicate and set apart all of the streets and roads as shown on the accompanying plat to the use of the public forever and hereby dedicate those portions of said real property which are labeled as utility easements on the accompanying plat as easements for the installation and maintenance of such utilities as telephone and electric lines, poles and cables; storm and sanitary sewer mains; water mains; gas pipe lines; and those portions of said real property which are labeled as irrigation easements on the accompanying plat as easements for the installation and maintenance of irrigation ditches, flumes and conduits;

That all expenses for installation of utilities or ditches referred to above, for grading or landscaping, and for street graveling or improvements shall be financed by the seller or purchaser --- not the County of Mesa.

IN WITNESS WHEREOF, said owners Gerald W. Wieker, Harry H. Castle and Basil E. Robinson have caused their names to be hereunto subscribed this 2nd day of July, A.D., 1969

By: *Gerald W. Wieker*
Gerald W. Wieker
By: *Harry H. Castle*
Harry H. Castle
By: *Basil E. Robinson*
Basil E. Robinson

STATE OF COLORADO } ss
COUNTY OF MESA }

The foregoing instrument was acknowledged before me this 2nd day of July, A.D., 1969, by Gerald W. Wieker, Harry H. Castle and Basil E. Robinson.

My Commission expires August 7, 1971
Witness my hand and official seal.

975519

Annis M. Dunston
Notary Public

CLERK AND RECORDER'S CERTIFICATE

STATE OF COLORADO } ss
COUNTY OF MESA }

I hereby certify that this instrument was filed in my office at 2:32 o'clock P.M., August 8th, A.D., 1969, and is duly recorded in Plat Book No. 11 Page 30

Fees \$10.00

Annis M. Dunston
Clerk and Recorder

COUNTY PLANNING COMMISSION CERTIFICATE

Approved this 8th day of July, A.D., 1969.
County Planning Commission of the County of Mesa, Colorado.

George B. Johnson
Chairman

BOARD OF COUNTY COMMISSIONER'S CERTIFICATE

Approved this 31st day of July, A.D., 1969.
Board of County Commissioners of the County of Mesa, Colorado.

Edwin S. Johnson
Chairman

SURVEYOR'S CERTIFICATE

I, Clarence J. Bielak do hereby certify that the accompanying plat of Lumley Subdivision- Replat of Blocks 2 and 3, a subdivision of a part of the County of Mesa, has been prepared under my direct responsibility, supervision and checking and accurately represents a field survey of same.

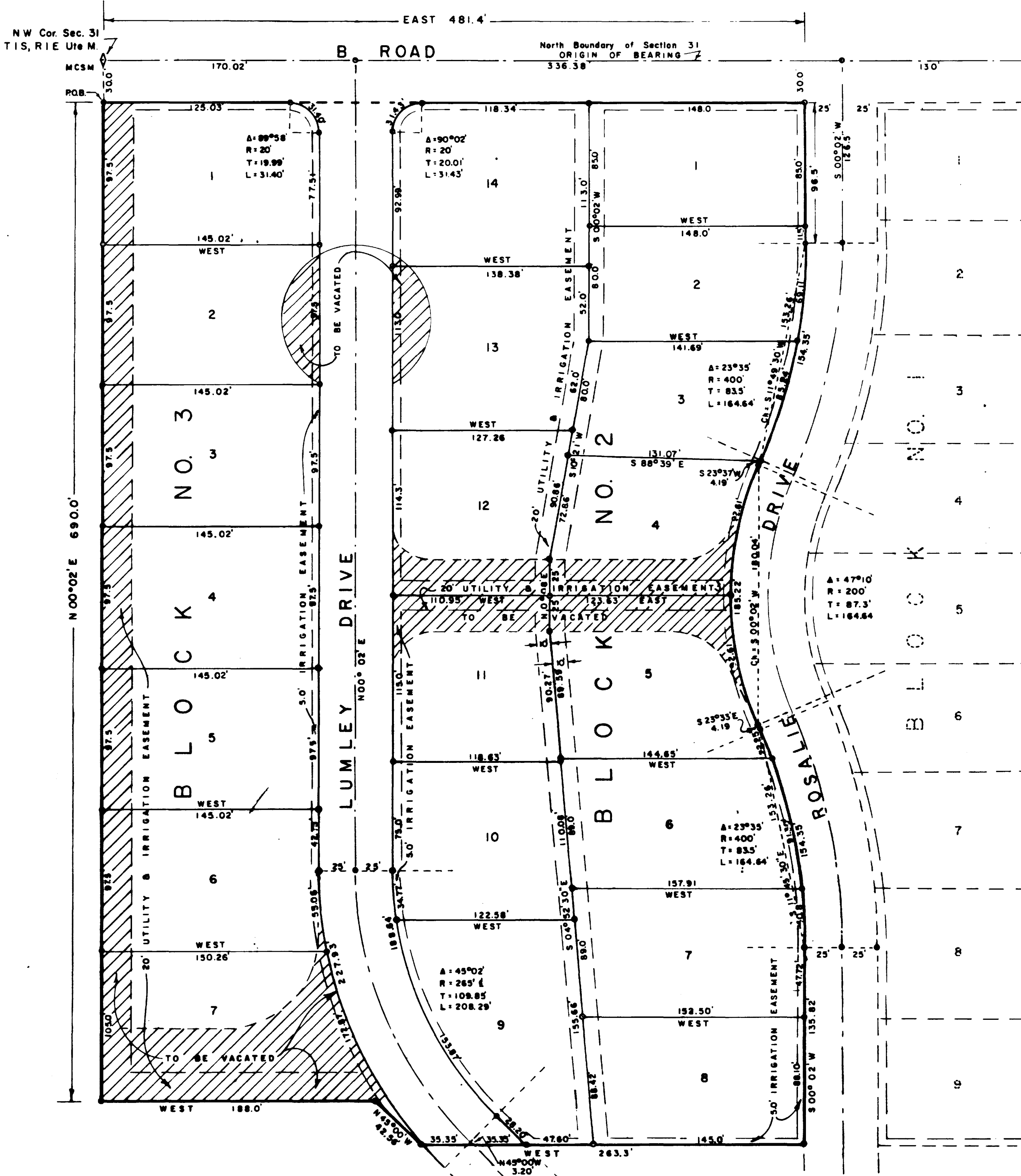
Clarence J. Bielak
Registered Land Surveyor

CERTIFICATE OF VACATION

Due to the convenience and access needs of the public being adequately served by the platting of public land and rights-of-way as shown hereon, the vacation of certain public rights-of-way as shown hereon and located within this subdivision, is hereby ordered.

Approved this 31st day of July, A.D., 1969
Board of County Commissioners of the County of Mesa, Colorado.

Edwin S. Johnson
Chairman



LEGEND
 - Steel pins
 - Steel pins set in Concrete

APPROVED FOR RECORD
 AND NOTED FOR ACTION
 CALCULATION OR EXAMINATION
 TO C.R.S. 1963, 136 2-2
 By: *Clarence J. Bielak*
 Mesa County Surveyor

WESTERN ENGINEERS, INC.
 PLAT OF
LUMLEY SUBDIVISION
REPLAT OF BLOCKS 2 & 3
 MESA COUNTY, COLORADO
 SURVEYED, DRAWN, C.S., TRACED, P.S.
 GRAND JUNCTION, COLO. 1-156-3 6/16/69