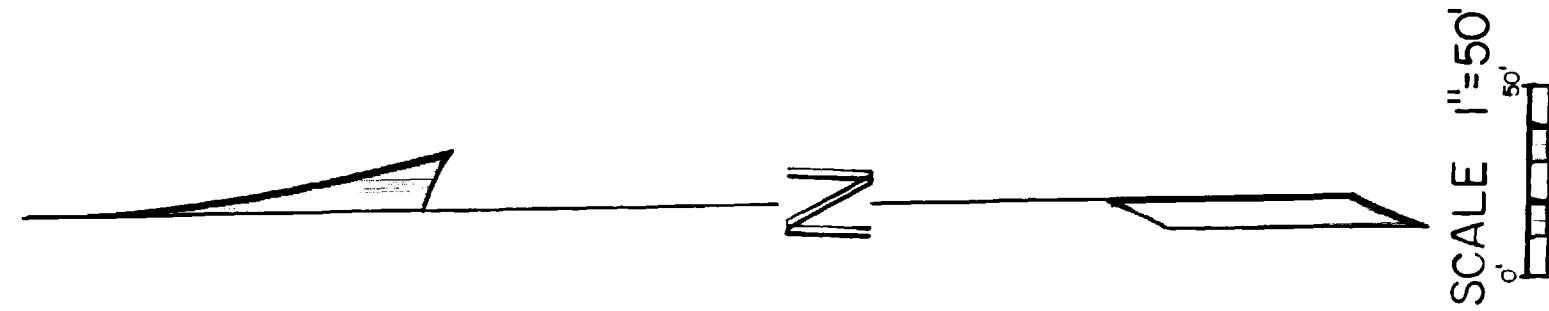


LA CASA DE DOMINGUEZ - FILING I



NE COR. SEC. 35
T1N R1W U.M.
MESA COUNTY BRASS CAP

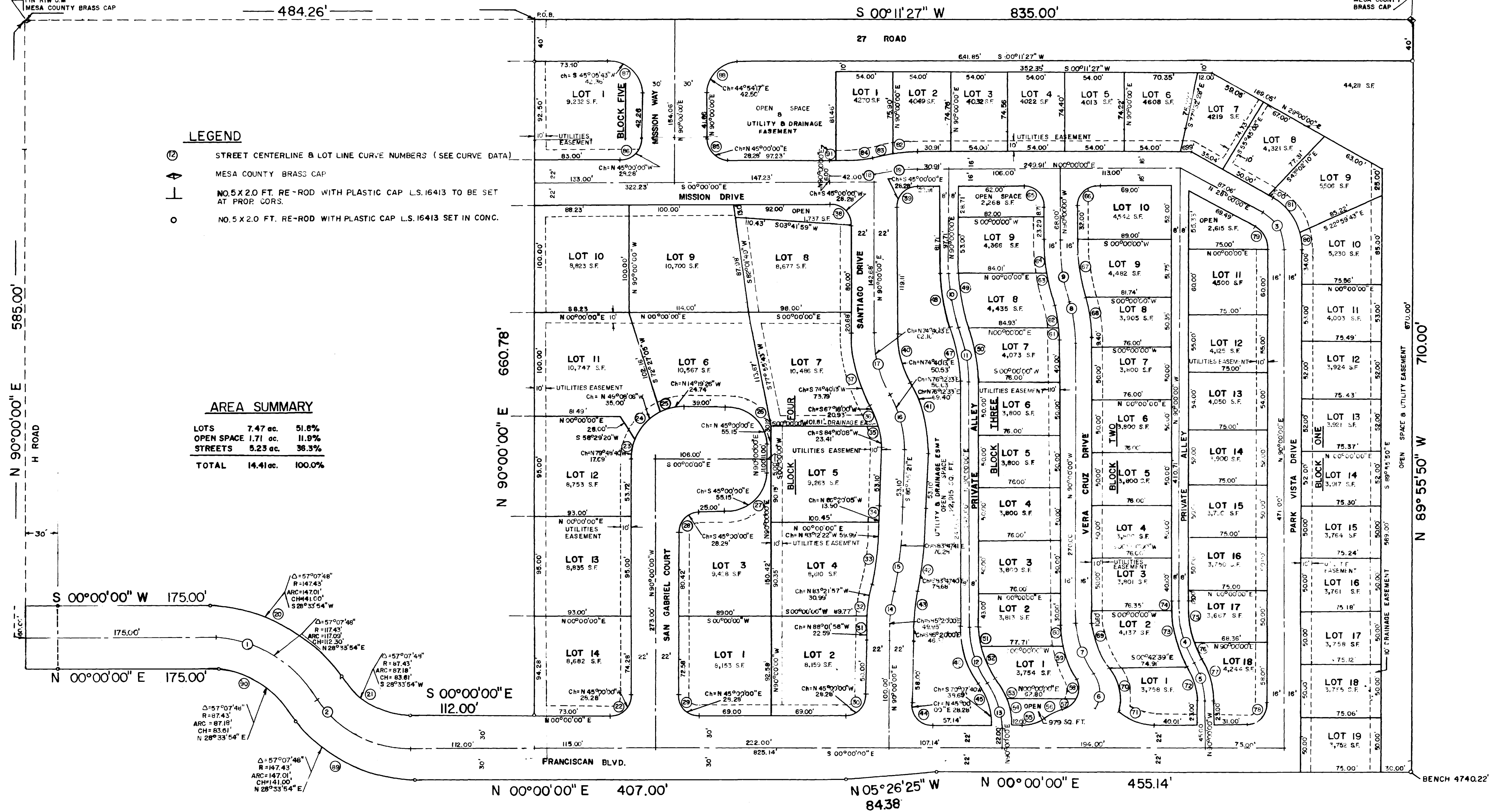
SE CORNER NE 1/4 NE 1/4 SEC. 35
T1N R1W U.M.
MESA COUNTY
BRASS CAP

LEGEND

- (2) STREET CENTERLINE & LOT LINE CURVE NUMBERS (SEE CURVE DATA)
- ↖ MESA COUNTY BRASS CAP
- ⊥ NO. 5 X 2.0 FT. RE-ROD WITH PLASTIC CAP L.S. 16413 TO BE SET AT PROP. CORNS.
- NO. 5 X 2.0 FT. RE-ROD WITH PLASTIC CAP L.S. 16413 SET IN CONC.

AREA SUMMARY

LOTS	7.47 ac.	51.8%
OPEN SPACE	1.71 ac.	11.9%
STREETS	5.23 ac.	36.3%
TOTAL	14.41 ac.	100.0%



LA CASA DE DOMINGUEZ - FILING I

FINAL PLAT

FOR	GREEN TREE	SURVEYED BY	Q.E.D.
DRAWN BY	CORBURN ENGINEERS	APPROVED BY	B.C.
SCALE	HORIZONTAL 1"=50'	SHEET NO.	2 of 2
DATE	JAN. 10, 1984	FILE NO.	83-03-02