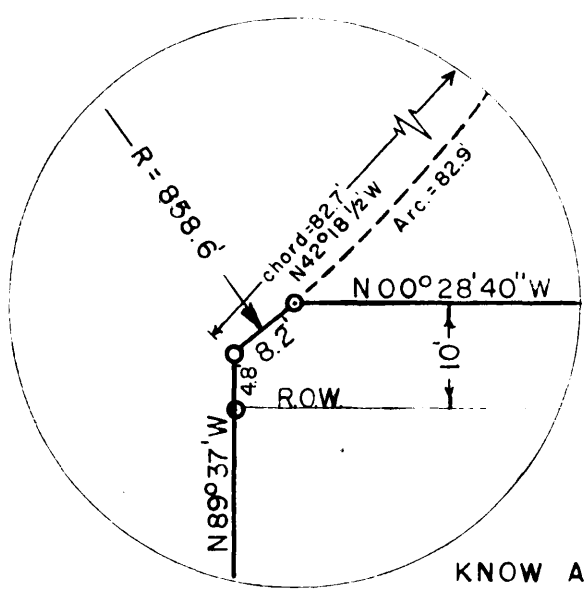
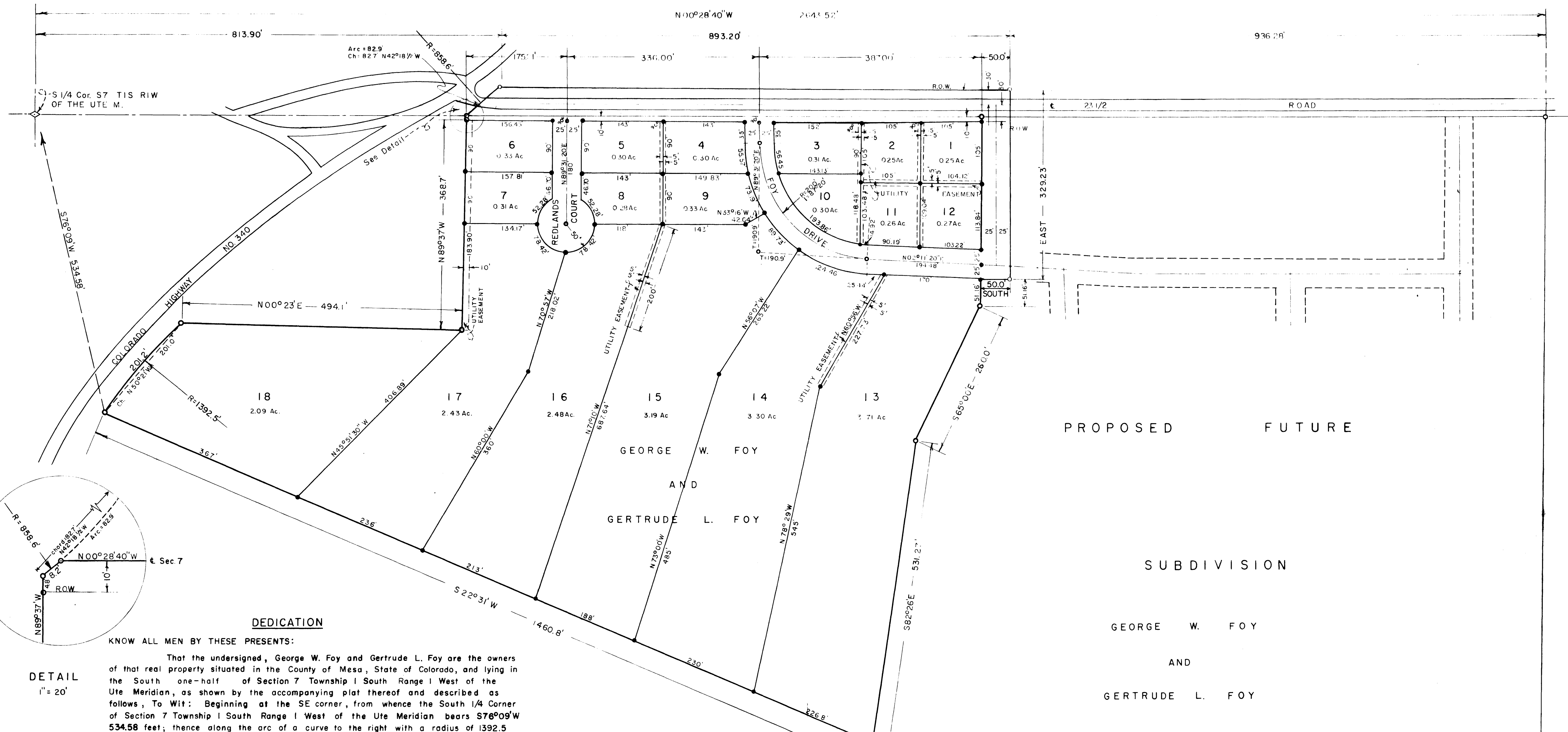


11.15 8 a 7.7
60'



DETAIL
1" = 20'

DEDICATION

KNOW ALL MEN BY THESE PRESENTS:

That the undersigned, George W. Foy and Gertrude L. Foy are the owners of that real property situated in the County of Mesa, State of Colorado, and lying in the South one-half of Section 7 Township 1 South Range 1 West of the Ute Meridian, as shown by the accompanying plat thereof and described as follows, To Wit: Beginning at the SE corner, from whence the South 1/4 Corner of Section 7 Township 1 South Range 1 West of the Ute Meridian bears S76°09'W 534.58 feet; thence along the arc of a curve to the right with a radius of 1392.5 feet a distance of 201.2 feet, the chord of which arc bears N50°21'W 201.0 feet; thence N00°23'E 494.1 feet; thence N89°37'W 368.7 feet; thence along the arc of a curve to the left with a radius of 829 feet a distance of 82.9 feet, the chord of which arc bears N42°18'1/2'W 82.7 feet; thence N00°28'40'W 893.20 feet; thence East 329.23 feet; thence South 50.0 feet; thence East 51.16 feet; thence S65°00'E 260.0 feet; thence S82°26'E 531.27 feet; thence S22°31'W 1460.8 feet to the place of beginning.

That said George W. Foy and Gertrude L. Foy have caused the said real property to be layed out and surveyed as REDLANDS ESTATES SUBDIVISION, a subdivision of a part of the County of Mesa.

That said George W. Foy and Gertrude L. Foy hereby dedicate and set apart all of the streets and roads as shown on the accompanying plat to the use of the public forever and hereby dedicate those portions of said real property which are labeled as utility easements on the accompanying plat as easements for the installation and maintenance of telephone and electric lines, poles and underground cables, storm and sanitary sewer mains, water mains, and gas pipe lines.

That all expenses involving necessary improvements for a water system, sanitary sewer system, gas service, electrical service, storm sewer system, grading and landscaping, curbs and gutters, street pavement and sidewalks shall be financed by the purchaser or seller—not the County of Mesa.

IN WITNESS WHEREOF, said George W. Foy and Gertrude L. Foy have caused their names to be hereunto subscribed this 18th day of April, A. D. 1956.

By George W. Foy
George W. Foy
By Gertrude L. Foy
Gertrude L. Foy

STATE OF COLORADO)
COUNTY OF MESA)

The foregoing instrument was acknowledged before me this 18th day of April, A. D. 1956, by George W. Foy and Gertrude L. Foy.

My commission expires June 30, 1959.

Witness my hand and official seal.

Clifford A. Piskay
Notary Public

CLERK AND RECORDER'S CERTIFICATE
I hereby certify that this instrument was filed in my office at _____ o'clock _____ M., _____ A. D. 1956 and is duly recorded in Plat Book No. _____ Page _____
Recorder _____
Deputy _____

Fees \$ _____
By _____
Approved this 2nd day of May, A. D. 1956.
County Planning Commission in _____ The County of Mesa, Colorado.
By Richard J. Mandeville
Chairman

REDLANDS PLANNING COMMISSION
Approved this 2nd day of April, A. D. 1956.
Redlands District Planning Commission in _____ The County of Mesa, Colorado.
By Richard J. Mandeville
Chairman

BOARD OF COUNTY COMMISSIONERS CERTIFICATE
Approved this 2nd day of May, A. D. 1956.
Board of County Commissioners of the County of Mesa, Colorado.
By Richard J. Mandeville
Chairman

PROPOSED FUTURE
SUBDIVISION
GEORGE W. FOY
AND
GERTRUDE L. FOY

SURVEYOR'S CERTIFICATE
I, Richard James Mandeville, do hereby certify that the accompanying plat of the REDLANDS ESTATES SUBDIVISION, a subdivision of a part of the County of Mesa has been prepared under my direction, and accurately represents a survey of the same.
Richard James Mandeville
Registered Engineer & Land Surveyor

SCALE 1" = 100'
WESTERN ENGINEERS
Map of
REDLANDS ESTATES
SUBDIVISION
MESA COUNTY, COLORADO

SURVEYED C. J. B. & W. Q.
DRAWN J. M. B. & R. M.
GRAND JUNCTION, COLORADO 4/17/56 DWG. 2-57-1

