

REPLAT OF LOTS 10,11&12 PANORAMA SUBDIVISION

FILING No. 2

DEDICATION

KNOW ALL MEN BY THESE PRESENTS:

That the undersigned Mesa Mortgage Investment Corp owner of Lots 10,11 and 12 Panorama Subdivision Filing No. 2, a subdivision in the County of Mesa, State of Colorado, as shown on the official plat of said subdivision as filed with the Mesa County Clerk and Recorder in Book 9 Page 178.
That said owner has caused the real property to be laid out and resurveyed as shown on the accompanying plat of Replat of Lots 10,11 and 12 Panorama Subdivision Filing No. 2.
That said replat does not affect the dedication of streets, roads and drives.

IN WITNESS WHEREOF, said owner Mesa Mortgage Investment Corp, has caused its officers names to be hereunto subscribed this 6th day of January, A.D. 1965

Otis C. Madden
President Mesa Mortgage Investment Corp
Otis C. Madden

Attest: *Johnnie Humphus*
Secretary Johnnie Humphus

STATE OF COLORADO)
COUNTY OF MESA) ss

The foregoing instrument was acknowledged before me this 6th day of January, A.D. 1965, by Otis C. Madden and Johnnie Humphus

My Commission expires February 16, 1966

Witness my hand and official seal

Henry F. Wilford
Notary Public

CLERK AND RECORDER'S CERTIFICATE

STATE OF COLORADO)
COUNTY OF MESA) ss

I hereby certify that this instrument was filed in my office at 4:45 o'clock P.M. JAN. 20, A.D. 1965, and is duly recorded in Plat Book No. 9, Page 200.

Annice D. Johnston
Clerk and Recorder

By _____
Deputy

Fees \$6.00

COUNTY PLANNING COMMISSION CERTIFICATE

Approved this 12th day of January, A.D. 1965 County Planning Commission of the County of Mesa, Colorado

Harold P. Bourman
Chairman

BOARD OF COUNTY COMMISSIONER'S CERTIFICATE

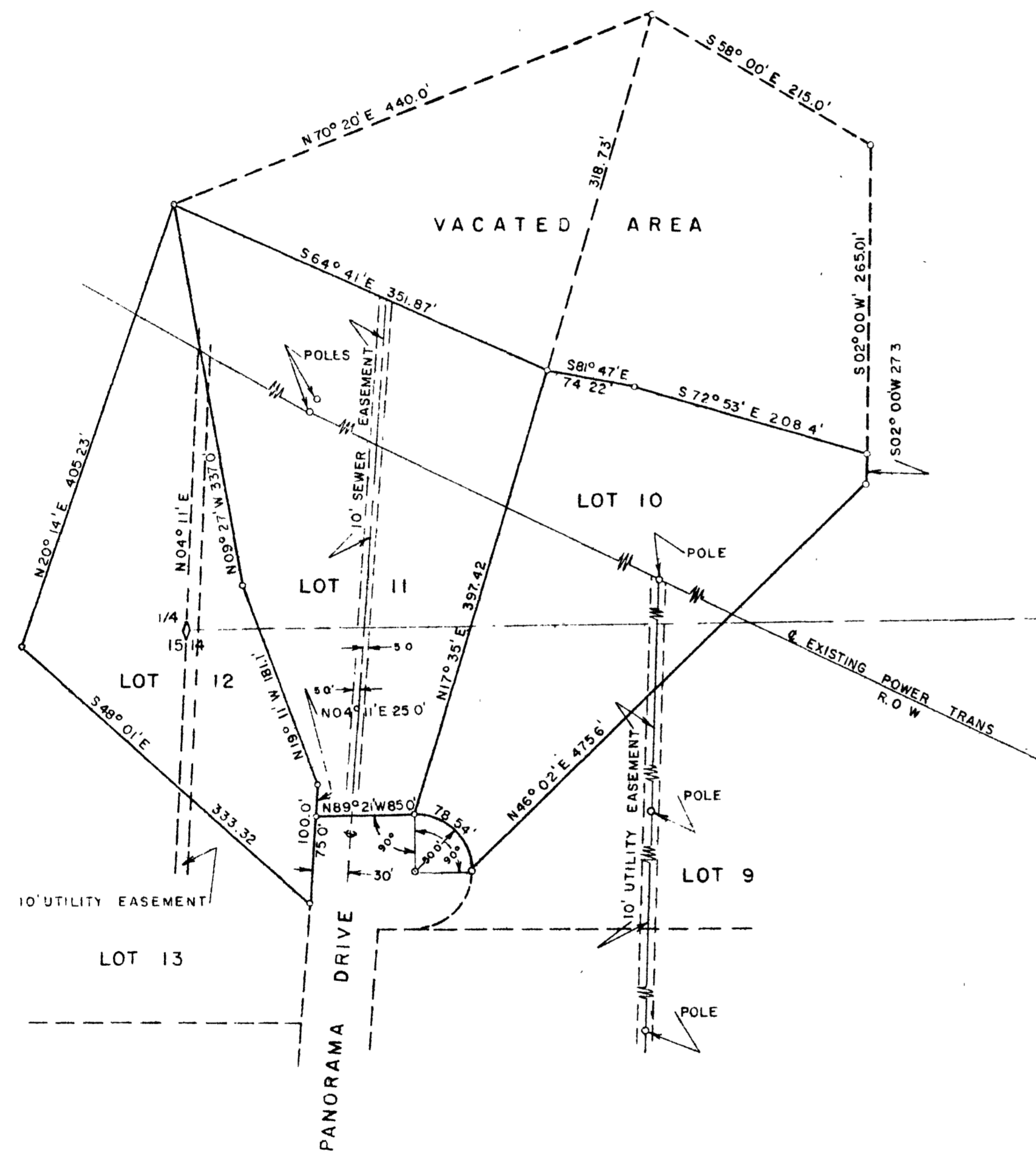
Approved this 18th day of Jan, A.D. 1965 Board of County Commissioner's of the County of Mesa, Colorado

Richard J. Mandville
Chairman

SURVEYOR'S CERTIFICATE

I Richard J. Mandville, do hereby certify that the accompanying plat of Replat of Lots 10,11 & 12 Panorama Subdivision, Filing No. 2, of a part of the County of Mesa, has been prepared under my direction and accurately represents a field survey of same.

Richard J. Mandville
Registered Engineer and Land Surveyor



T IIS R101W 6th P.M.

NOTES

5' irrigation easements reserved along all frontages on streets.



WESTERN ENGINEERS INC
REPLAT OF LOTS 10,11, & 12
FILING No. 2
PANORAMA SUBDIVISION
SURVEYED C.E.D. DRAWN C.J.B. TRACED G.L.A.
GRAND CO. COLORADO