

PANORAMA SUBDIVISION

REPLAT OF LOT 5 BLOCK NO. 12

IN FILING NO. 5 AND

LOTS 6-7-8 BLOCK NO. 12 AND THE

PARK AREA IN FILING NO. 6

DEDICATION

KNOW ALL MEN BY THESE PRESENTS:

That the undersigned Arthur S. Keas and Lorie B. Keas owners of Lot 5, Block No. 12, Filing No. 5, Panorama Subdivision and Mesa Mortgage Investment Corp. owner of Lots 6-7 and 8, Block No. 12 and the Park Area in Filing No. 6, Panorama Subdivision, subdivisions in the County of Mesa, State of Colorado as shown on the official plats of said subdivisions as filed with the Mesa County Clerk and recorder in Book No. 9, Page 203 and Book No. 10, Page 2.

That said owners have caused the real property to be laid out and resurveyed as shown on the accompanying plat of Replat of Lot 5, Block 12, Panorama Subdivision in Filing No. 5 and Lots 6-7-8 in Block 12, Panorama Subdivision and the Park Area in Filing No. 6.

That said replat does not affect the dedication of streets, roads and drives

IN WITNESS WHEREOF, said owners Arthur S. Keas, Lorie B. Keas and Mesa Mortgage Investment Corp., has caused its officers names, Otis C. Madden and Johnnie Humphus, to be hereunto subscribed this 20th day of September, A.D. 1965.

Arthur S. Keas
 Arthur S. Keas
Lorie B. Keas
 Lorie B. Keas
Otis C. Madden
 Mesa Mortgage Investment Corp.
 Otis C. Madden - President
Johnnie Humphus
 Secretary Johnnie Humphus

STATE OF COLORADO)
 COUNTY OF MESA) ss

The foregoing instrument was acknowledged before me this 20th day of September, A.D. 1965, by Arthur S. Keas, Lorie B. Keas, Otis C. Madden and Johnnie Humphus.
 My Commission expires August 14, 1968
 Witness my hand and official seal

R. J. Schroeder
 Notary Public

901527

CLERK AND RECORDERS CERTIFICATE

STATE OF COLORADO)
 COUNTY OF MESA) ss

I hereby certify that this instrument was filed in my office at 3:58 o'clock P. M. Sept 20 A.D. 1965, and is duly recorded in Plat Book No. 10, Page 9

Annie M. Dunston
 Clerk and Recorder

Fees \$ 10.00

By _____ Deputy

COUNTY PLANNING COMMISSION CERTIFICATE

Approved this 14th day of September, A.D. 1965.
 County Planning Commission of the County of Mesa, Colorado.

Harvey Bowman
 Chairman

BOARD OF COUNTY COMMISSIONER'S CERTIFICATE

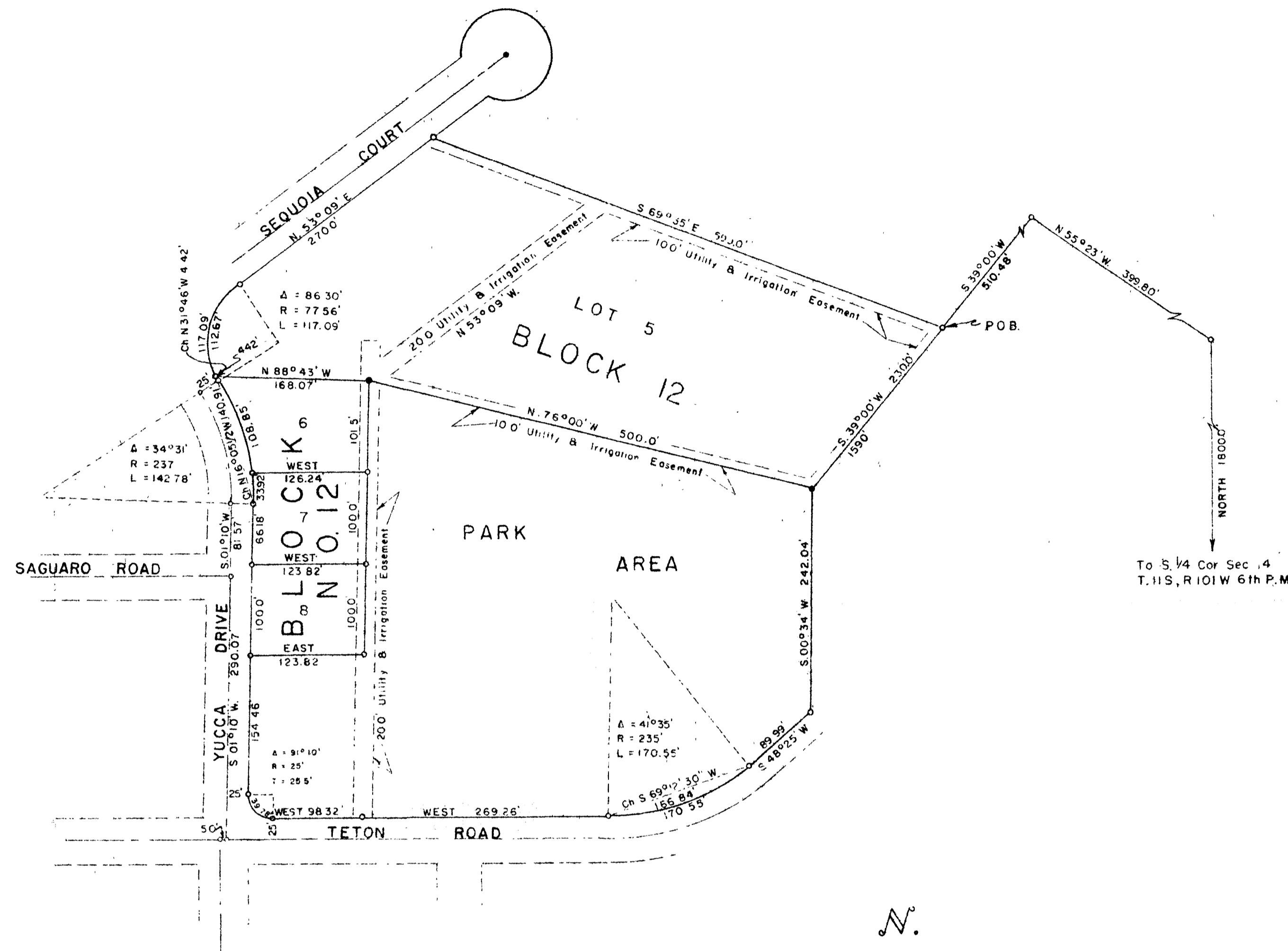
Approved this 20th day of September, A.D. 1965.
 Board of County Commissioner's of the County of Mesa, Colorado.

Arthur S. Keas
 Chairman

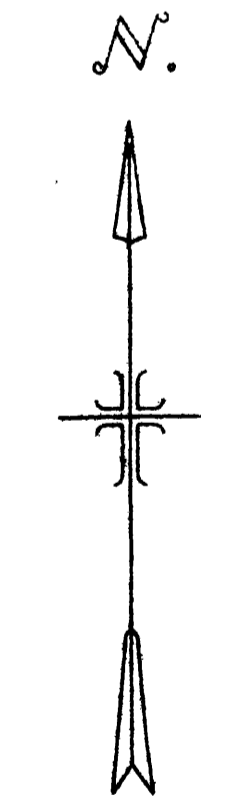
SURVEYOR'S CERTIFICATE

I, Richard J. Mandeville, do hereby certify that the accompanying plat of Replat of Lot 5 Filing No. 5, Panorama Subdivision and Lots 6-7-8 and the Park Area in Filing No. 6, Panorama Subdivision, Subdivisions of a part of the County of Mesa, has been prepared under my direction and accurately represents a field survey of same.

Richard J. Mandeville
 Registered Engineer and Land Surveyor



To S. 1/4 Cor. Sec. 4
 T. 11S, R. 101W 6th P.M.



— LEGEND —

- ⊙ Steel pin
- ⊙ Steel pin set in concrete

WESTERN ENGINEERS INC
 PANORAMA SUBDIVISION
 REPLAT OF LOT 5 BLOCK NO. 12
 FILING NO. 5 AND
 LOTS 6-7-8 BLOCK NO. 12 AND THE
 PARK AREA FILING NO. 6
 MESA COUNTY, COLORADO

SURVEYED A.E.O. DRAWN W.T.O. TRACED S.J.P.