

# LEWIS SUBDIVISION

## DEDICATION

### KNOW ALL MEN BY THESE PRESENT:

That the undersigned, V.I. Lewis is the owner of that real property situated in the County of Mesa, State of Colorado, and lying in SE 1/4 SW 1/4 of Section 26 as show by the accompanying plat thereof: said tract being more specifically described by metes and bounds as follows:

Beginning at a point which is N.0°13'E. 30.0 feet and N.89°55'W. 30.0 feet from the SE. Cor SW 1/4 Sec 26 T1N, R1W of the Ute Meridian, thence N.00°13'E. 445.2 feet, thence S.72°42'W. 409.5 feet, thence S.57°40'W. 330.0 feet, thence S.48°30'W. 219.7 feet, thence S.89°55'E. 832.7 feet to the point of Beginning.

That the said owner has caused the said real property to be laid out and surveyed as Lewis Subdivision, a subdivision of a part of the County of Mesa;

That said owner does hereby dedicate and set apart all of the streets and roads as shown on the accompanying plat to the use of the public forever and hereby dedicate those portions of said real property which are labeled as utility easements on the accompanying plat as easements for the installation and maintenance of such utilities as telephone and electric lines, poles and cables; storm and sanitary sewer mains; water mains; gas pipe lines; and those portions of said real property which are labeled as irrigation easement on the accompanying plat as easements for the installation and maintenance of irrigation ditches, flumes and conduits;

That all expenses for installation of utilities or ditches referred to above, for grading or landscaping, and for street graveling or improvements shall be financed by the seller or purchaser --- not the County of Mesa.

IN WITNESS WHEREOF, said V.I. Lewis has caused his name to be hereunto subscribed this 10<sup>th</sup> day of January, A.D., 1966.

By V.I. Lewis  
V.I. Lewis

STATE OF COLORADO }  
COUNTY OF MESA }

The forgoing instrument was acknowledge before me this 10<sup>th</sup> day of January, A.D., 1966.

by V.I. Lewis.

My Commission expires \_\_\_\_\_  
Witness my hand and official seal.

Notary Public

### CLERK AND RECORDER'S CERTIFICATE 909170

STATE OF COLORADO }  
COUNTY OF MESA }

I hereby certify that this instrument was filed in my office at 2:56 o'clock P.M., Jan 10, A.D., 1966, and is duly recorded in Plat Book No. 10, Page 76.

Carrie M. Tunstall  
Clerk and Recorder

Fees \$ 10.00

By \_\_\_\_\_  
Deputy

### COUNTY PLANNING COMMISSION CERTIFICATE

Approved this 14<sup>th</sup> day of December, A.D., 1965.  
County Planning Commission of the County of Mesa, Colorado.

By Marion Bourne  
Chairman

### BOARD OF COUNTY COMMISSIONER'S CERTIFICATE

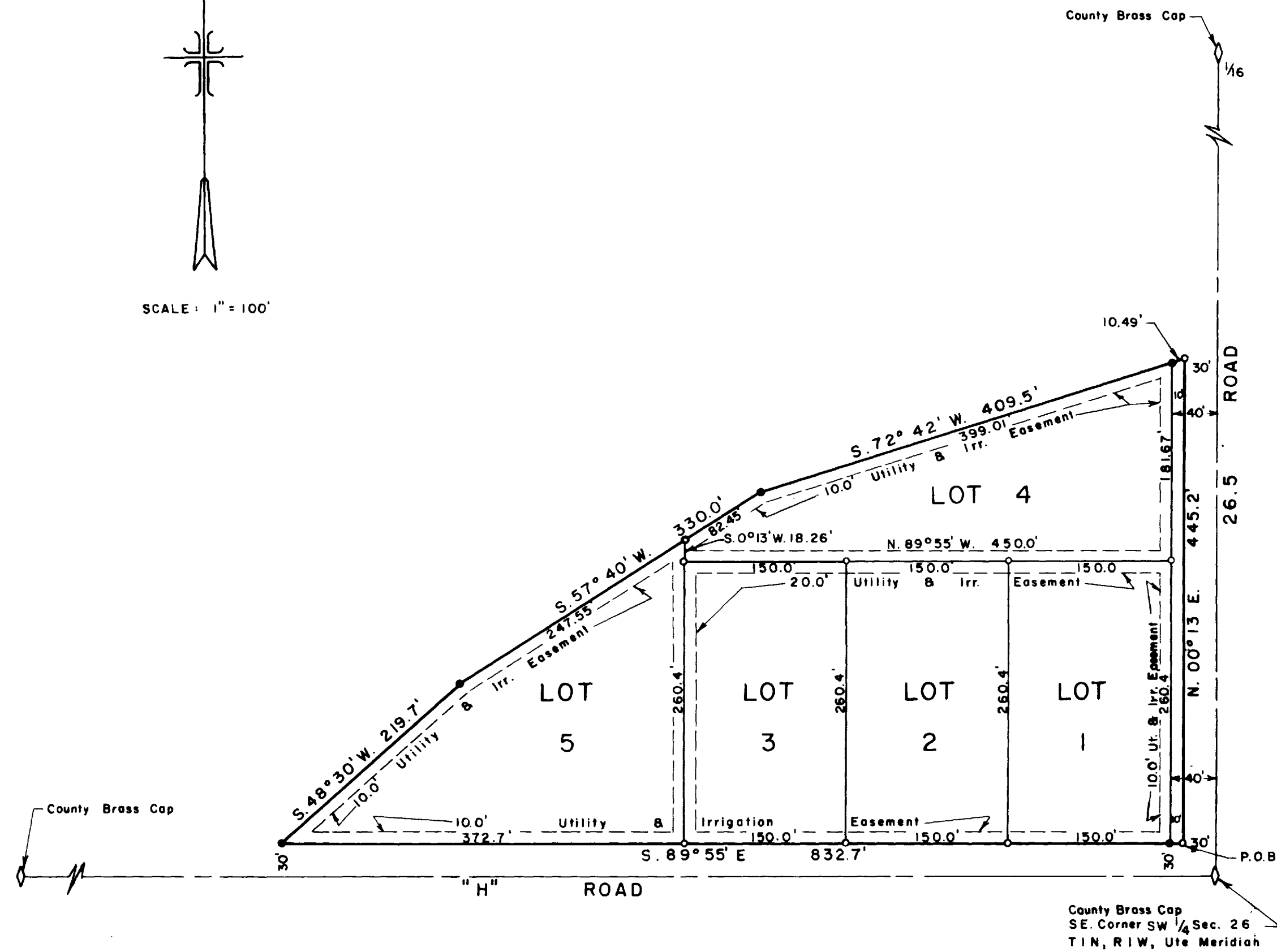
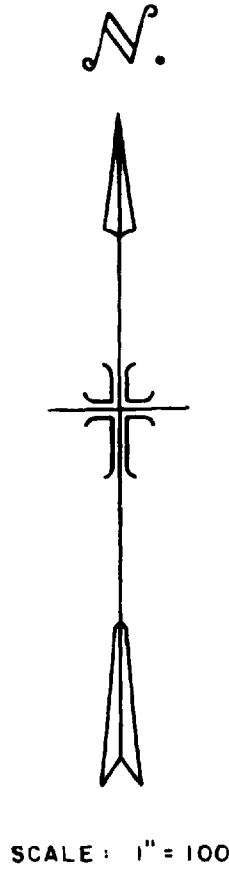
Approved this 20<sup>th</sup> day of December, A.D., 1965.  
Board of County Commissioners of the County of Mesa, Colorado.

By Arthur Jensen  
Chairman

### SURVEYOR'S CERTIFICATE

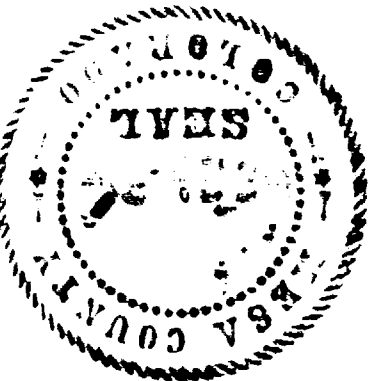
I, Clarence J. Bielak do hereby certify that the accompanying plat of Lewis Subdivision, a subdivision of a part of the County of Mesa, has been prepared under my direction, and accurately represents a field survey of same.

By Clarence J. Bielak  
Registered Land Surveyor



#### LEGEND

- Steel pins
- Steel pins set in concrete



WESTERN ENGINEERS INC.  
LEWIS SUBDIVISION  
MESA COUNTY COLORADO  
SURVEYED C.J.B. DRAWN C.J.B. TRACED G.L.A.  
GRAND JUNCTION, COLO. DWG. NO. 1-390-2 12/7/65