

KNOW ALL MEN BY THESE PRESENTS: That the undersigned, W L White and Ruby White, being the owners of the following described land Beginning at a point 220 feet South of the NE corner of the W 1/2 NE 1/4 NW 1/4 section 8 T1S R1E Ute Meridian, thence West 107 feet, thence North 220 feet, thence West 50 feet, thence South 330 feet, thence West 107 feet, thence South 990 feet, thence East 264 feet, thence North 1100 feet to the point of beginning, have caused the same to be subdivided and plotted as shown hereon, they do hereby set apart and dedicate the Road as shown hereon to the use of the public forever; they also dedicate the utility easements for the construction, operation and maintenance of telephone and power lines, sewer, water and gas mains and other utilities, and the irrigation easements for the construction, operation and maintenance of irrigation ditches; they do hereby name said subdivision WHITE SUBDIVISION.

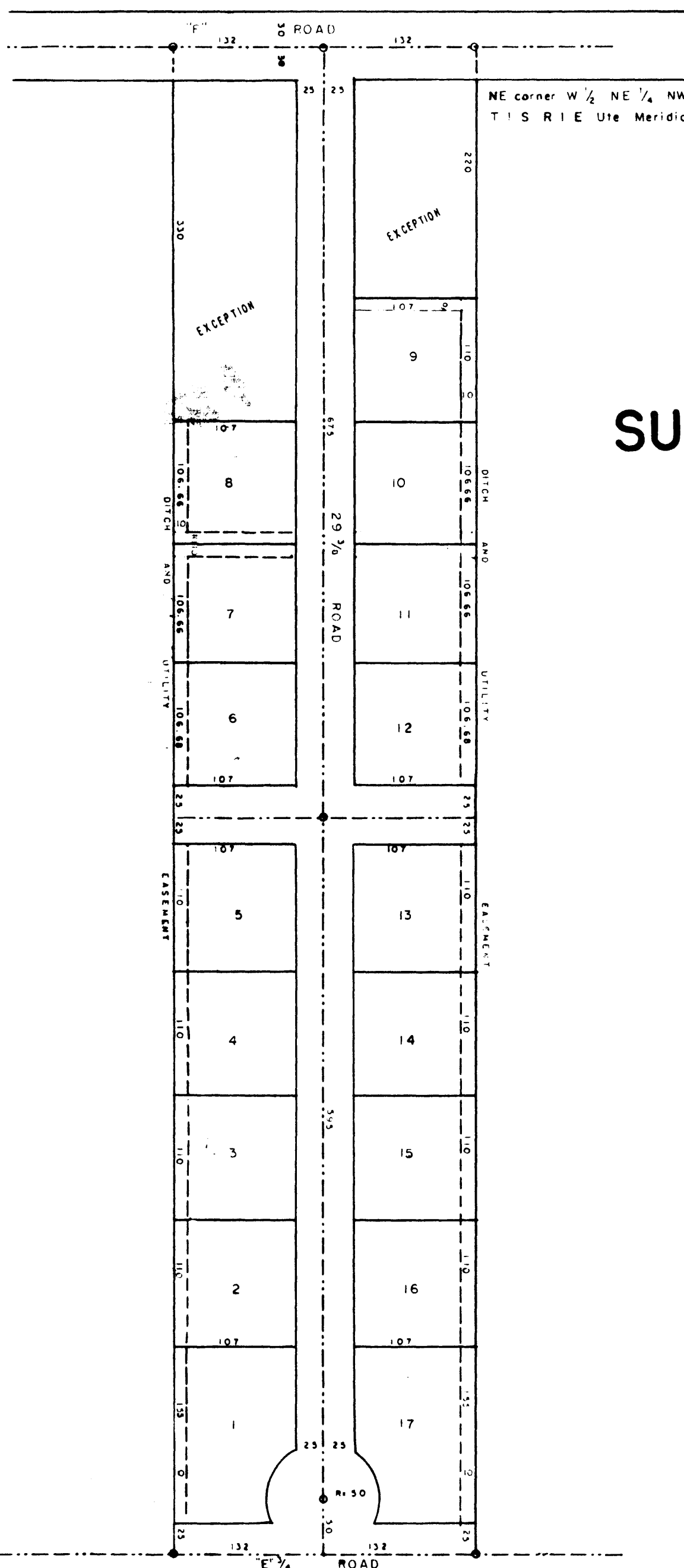
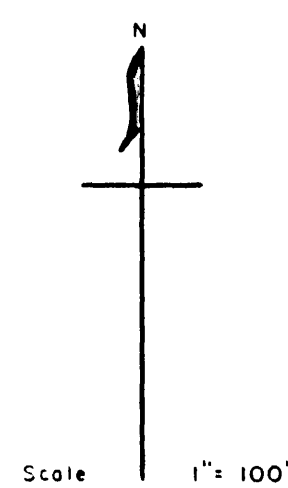
It is understood and agreed that the County of Mesa Shall not be held liable for the cost of construction of any roads, utilities or ditches within this subdivision.

In witness whereof we have hereunto placed our hands this 17th day of December 1958

W L White  
W L White  
Ruby White  
Ruby White



# WHITE SUBDIVISION



STATE OF COLORADO } SS  
County of Mesa

The foregoing instrument was acknowledged before me this 17th day of December AD 1958

by W L White and Ruby White

My commission expires January 6, 1959

L. M. Finnessey  
Notary Public

APPROVED

By the Fruitvale Planning Commission this 4th day of FEBRUARY 1959 by C. B. Grant  
Chairman

By the Mesa County Planning Commission this 20th day of January 1959 by E. L. Gray  
Chairman

By the Board of County Commissioners this 9th day of February 1959 by R. T. Saunders  
Chairman

I, Roy L. George, hereby certify that this is a true and correct plat of survey of the above described land and of the subdivision of the same.

Roy L. George  
County Surveyor, L. S.

I certify that this instrument was filed in my office at o'clock 10:00 M on 12/17/58 1958 and is recorded in plat book No. 10 at page No. 60

County Clerk and Recorder

By Deputy