

KNOW ALL MEN BY THESE PRESENTS That the undersigned Jack Snyder, Hobart C Jenkins, Ruby M Jenkins, and Elizabeth H Negrevski,

being the owners of the following described land, beginning at a point 270 feet East of the SW corner of the SW 1/4 NW 1/4 SW 1/4 section 25 T1 S R1 W Ute Meridian, thence North 330 feet, thence West 35 feet, thence North 130 feet, thence N 47° 31' E 128.8 (call is N 48° E 117), thence North 112 feet to the North line of the said SW 1/4 NW 1/4 SW 1/4, thence East 330 feet, thence South 330 feet, thence West 126 feet, thence South 330 feet, thence West 264 feet to the point of beginning, have caused the same to be subdivided and platted as shown hereon, they do hereby set apart and dedicate the roads as shown hereon to the use of the public forever; the utility and irrigation easements as shown hereon are dedicated for the construction, operation and maintenance of telephone and power lines, sewer, water and gas mains and irrigation ditches, they do hereby name said place THE JENKINS SUBDIVISION. It is understood and agreed that the County of Mesa shall not be held liable for the cost of construction of any roads, utilities or ditches within this subdivision.

in witness whereof we have hereunto placed our hands this 2nd day of June 1959

THE JENKINS SUBDIVISION

Jack Snyder
Jack Snyder

Hobart C Jenkins
Hobart C Jenkins

Elizabeth H Negrevski
Elizabeth H Negrevski

Ruby M Jenkins
Ruby M Jenkins

STATE OF COLORADO }
County of Mesa } SS

The foregoing instrument was acknowledged before this 2nd day of June AD 1959
Hobart C Jenkins, Ruby M Jenkins and Elizabeth H Negrevski.
My commission expires January 6, 1963

M. Finney
Notary Public

STATE OF COLORADO }
County of Mesa } SS

The foregoing instrument was acknowledged before this 16th day of June AD 1959
by Jack Snyder.
My commission expires January 6, 1963

L. M. Finney
Notary Public

APPROVED:

By the Mesa County Planning Commission this 25th day of June 1959

By *E. L. Gray*
Chairman

By the Board of County Commissioners this 30th day of JUNE 1959

By *R. L. George*
Chairman

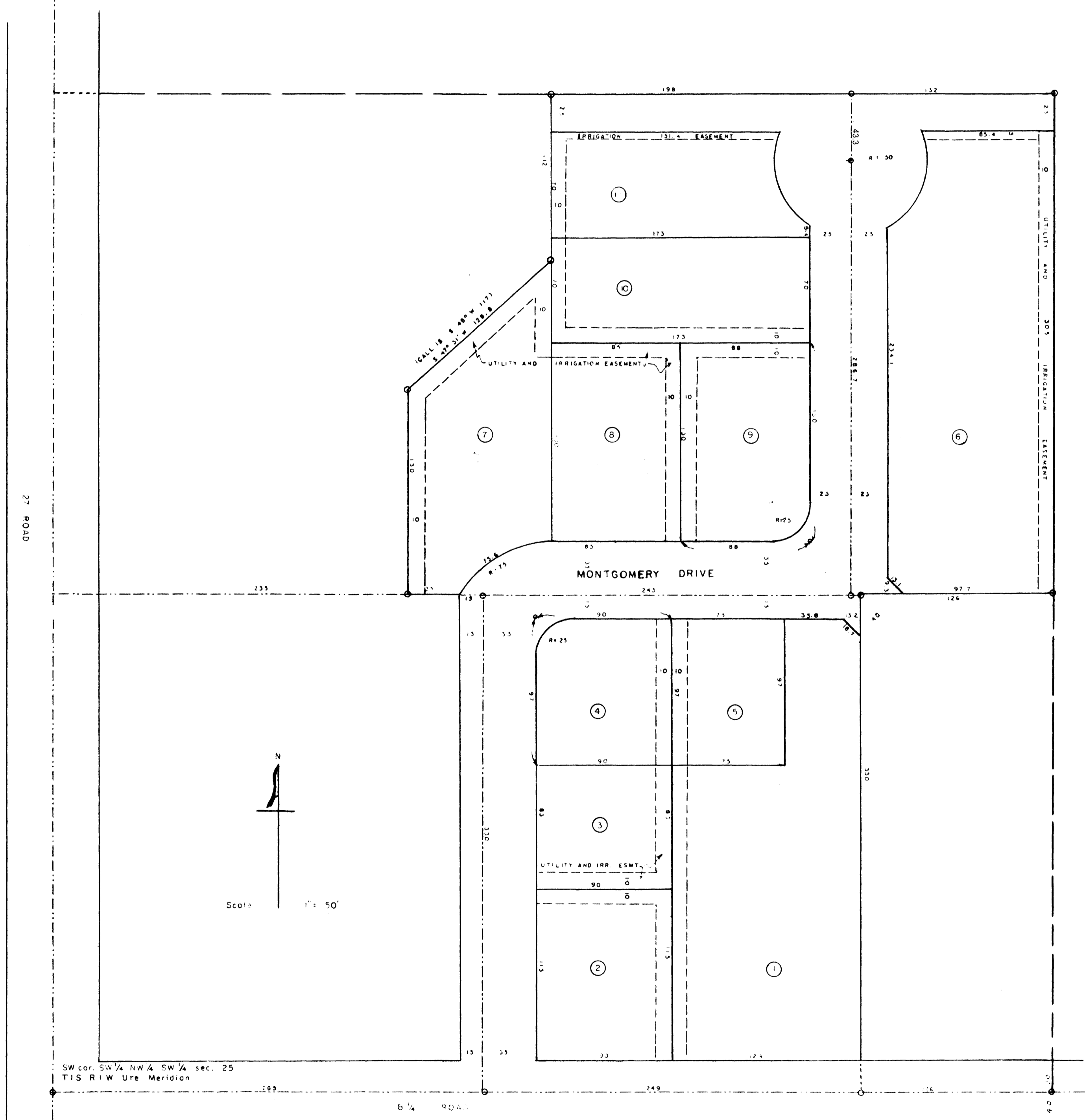
I Roy L. George certify that this is a true and correct plot of the subdivision of the above described land.

Roy L. George
County Surveyor, R. L. S.

I certify that this instrument was filed in my office on the 1 day of JUL 1959 at 12:05 O'clock P.M. and is recorded in plat book No. 9 at page 78

County Clerk and Recorder

By _____
Deputy



SW cor. SW 1/4 NW 1/4 SW 1/4 sec. 25
T1 S R1 W Ute Meridian