

MEGA COUNTY COLORADO

KNOW ALL MEN BY THESE PRESENTS: That C C Talbott and Inez Talbott, being the owners of the East 135 feet of the North 594.4 feet of the NE 1/4 NE 1/4 SE 1/4 section 26 T 1 S R 1 W Ute Meridian, have caused the same to be surveyed and platted as shown hereon, has named said Lots 1 to 6 Block One plac/Talbott Subdivision, and they do hereby set apart and dedicate the roads as shown hereon to the use of the public forever, they also dedicate easements as shown hereon for the construction, operation and maintenance of telephone and power lines, sewer, water and gas mains and irrigation ditches. It is understood and agreed that the County of Mesa shall not be held liable for the cost of construction of roads, utilities or ditches within this subdivision. In witness we have hereunto placed our hands this 17th day of December 1959

C C Talbott
C C TALBOTT

Inez Talbott
INEZ TALBOTT

STATE OF COLORADO } SS
County of Mesa

The foregoing instrument was acknowledged before me this 17th day of December AD 1959

by C C Talbott and Inez Talbott

My commission expires January 2, 1961

Norma Severe
NOTARY PUBLIC

APPROVED:

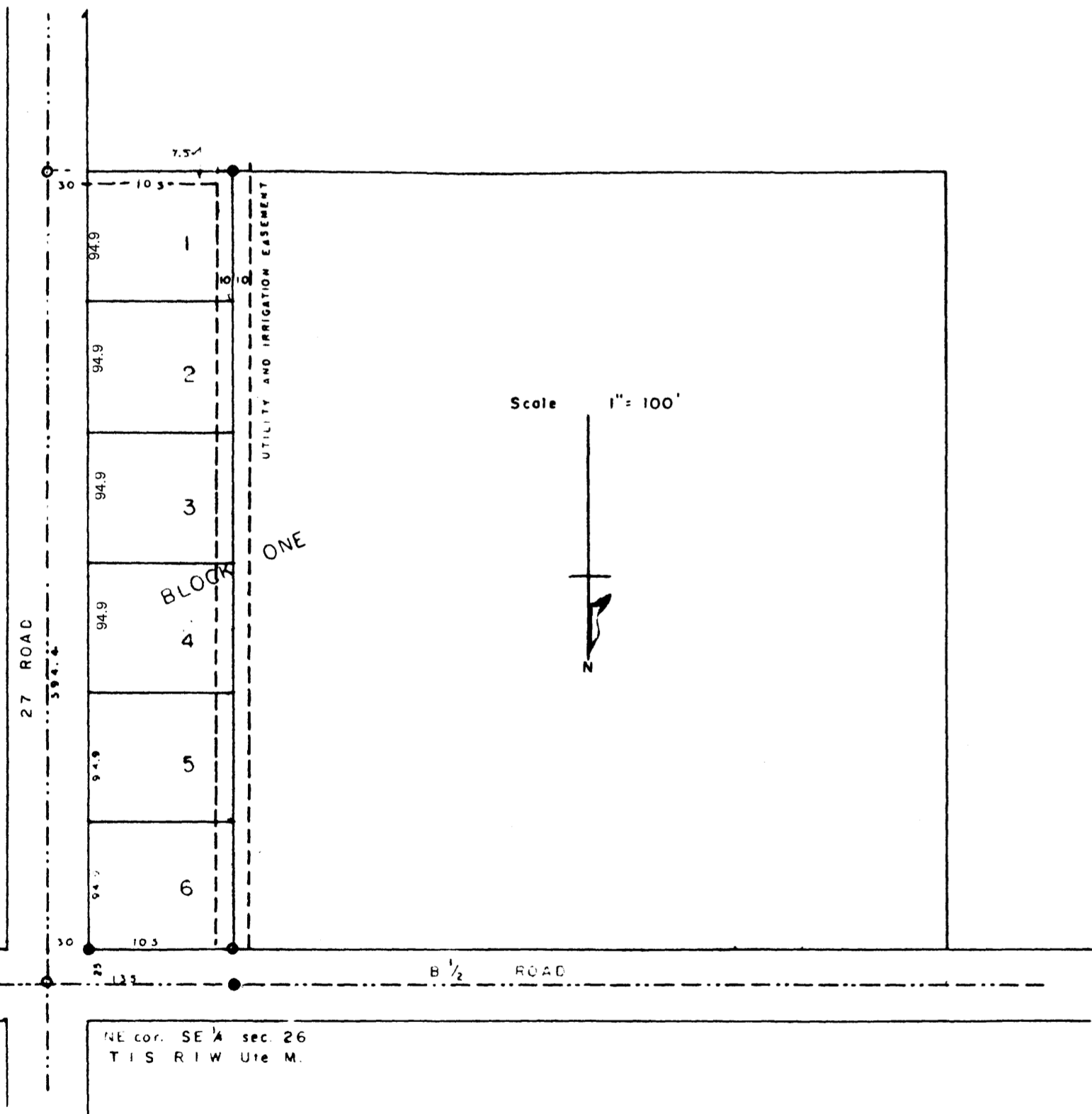
By the Mesa County Planning Commission this 22 day of December 1959

By E. Linn Gray
CHAIRMAN

By the Board of County Commissioners this 30th day of December 1959

By A. F. Scumbrin
CHAIRMAN

LOTS 1 to 6 BLOCK ONE
TALBOTT SUBDIVISION



I Roy L. George, certify that this is a true and correct plot of survey of the above described land and of the subdivision of the same.

Roy L. George
County Surveyor, I. S.

STATE OF COLORADO } SS
County of Mesa

758987

I certify that this instrument was filed in my office at 10:00 O'clock A.M. this 31 day of December 1959 and is recorded in plat book 9 at page 89

Annice M. Dunston
County Clerk and Recorder

By _____
Deputy

