

TALBOTT SUBDIVISION

MESA COUNTY, COLORADO.

KNOW ALL MEN BY THESE PRESENTS: That the undersigned C. C. Talbott and Inez Talbott, being the owners of the following described tract of land; beginning at a point 135 feet West of the NE corner of the SE 1/4 section 26 T1S R1W Ute Meridian, thence South 594.4 feet, thence West 522.3 feet, thence N 0° 12' W 594.4 feet, thence East 524 feet to the point of beginning; have caused the same to be surveyed and platted as shown hereon, and they do hereby set apart and dedicate the roads and drives as shown hereon to the use of the public forever, they also dedicate utility and irrigation easements, as shown hereon, for the construction, operation and maintenance of telephone and power lines, sewer, water and gas mains and irrigation ditches and they do hereby name said place lots 7 to 13 block one and blocks two and three of TALBOTT SUBDIVISION.

Lots 7 to 13 inc. block one, blocks two and three of the  
**TALBOTT SUBDIVISION**

It is understood and agreed that the County of Mesa shall not be held liable for the cost of construction of any roads, utilities or ditches within this subdivision.  
In witness whereof we have hereunto placed our hands this 6<sup>th</sup> day of May 1960

C. C. Talbott  
C. C. Talbott

Inez Talbott  
Inez Talbott

STATE OF COLORADO }  
County of Mesa } SS

The foregoing instrument was acknowledged before me this 6<sup>th</sup> day of May A D 1960

by C. C. Talbott and Inez Talbott.

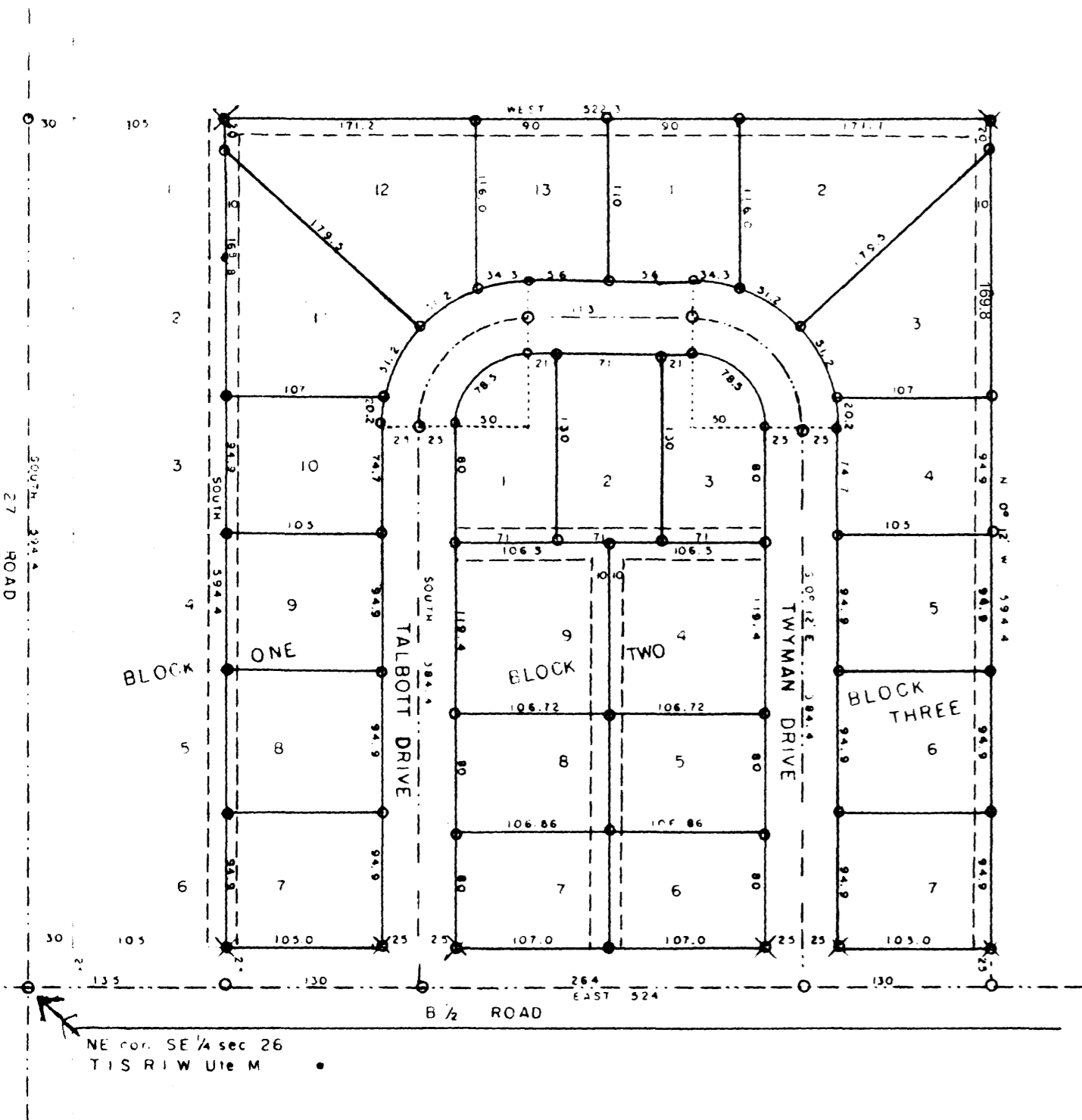
My commission expires August 16, 1962.

Don E. Eider  
Notary Public

APPROVED:

By the Mesa County Planning Commission on the 10<sup>th</sup> day of MAY 1960 by E. Luis Gray Chairman

By the Board of County Commissioners on the 16 day of May 1960 by Henry J. Sepper Chairman



768311

STATE OF COLORADO }  
County of Mesa } SS

I Roy L. George certify that this a true and correct plot of survey of the above described land and of the subdivision of the same.

I hereby certify that this instrument was filed in my office at 9:40 O'clock 9 A. M on the 23<sup>rd</sup> day of May 1960 and is recorded in plat book No 9 at page 106

Roy L. George  
County Surveyor, A. L. S.

Annie M. Dunston  
County Clerk and Recorder

By Deputy 6.00