

MESA COUNTY COLORADO

KNOW ALL MEN BY THESE PRESENTS: That the undersigned T. W. Byars and Irene Byars, being the owners of the following described tract of land; beginning at a point 247. feet North of the SW corner of the SW 1/4 NW 1/4 section 16 T 1 S R 1 E Ute Meridian, thence North 413 feet, thence East 924 feet, thence South 440 feet, thence West 396 feet, thence North 27 feet, thence West 528 feet to the point of beginning, have caused the same to be surveyed and plotted as shown hereon, have named said place BYARS SUBDIVISION, they do hereby set apart and dedicate the roads as shown hereon to the use of the public forever, they also dedicate the utility easements as shown hereon, for the construction, operation and maintenance of telephone and power lines, sewer water and gas mains, and the irrigation easements for the construction, operation and maintenance of irrigation ditches. It is understood and agreed that the County of Mesa shall not be held liable for the cost of construction of the roads, utilities within this subdivision.

In witness whereof we have hereunto placed our hands this 2nd day of MARCH 1960

T. W. Byars
T. W. Byars

Irene Byars
Irene Byars

BYARS SUBDIVISION

STATE OF COLORADO }
County of Mesa }

The foregoing instrument was acknowledged before me this 2nd day of March AD 1960

by T. W. Byars and Irene Byars.

My commission expires January 6, 1963

L. M. Finnessey
Notary Public

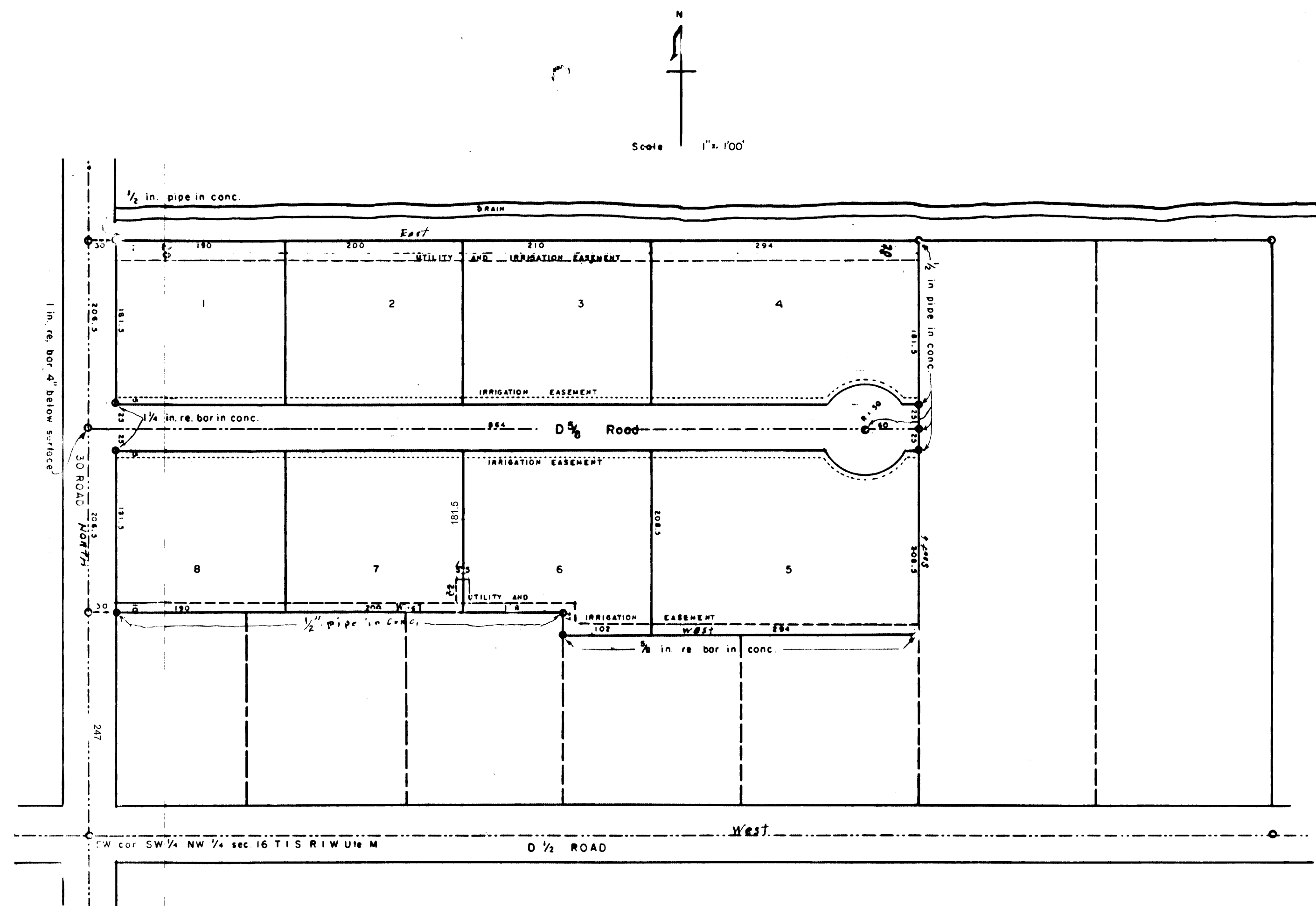


APPROVED:

By the Fruitvale Planning Commission this 9th day of MARCH 1960 by C. B. Grant
Chairman

By the Mesa County Planning Commission this 8th day of MARCH 1960 by E. L. Ingham
Chairman

By the Board of County Commissioners this 14 day of MARCH 1960 by Henry J. Jupp
Chairman



I Roy L. George, certify that this a true and correct plot of survey of the above described land and of the subdivision of the same.

STATE OF COLORADO }
County of Mesa }

I hereby certify that this instrument was filed in my office at 9:35 O'clock A M on the 29 day of March 1960 and is recorded in plat book No 9 at page 98

Roy L. George
County Surveyor, R. S.

Annice M. Hamilton
County Clerk and Recorder

By _____
Deputy