

# WHITEWOOD SUBDIVISION

## DEDICATION

KNOW ALL MEN BY THESE PRESENTS:

That the undersigned Emery A. White is the owner of that real property situated in the County of Mesa, State of Colorado and being a part of W 1/2 SW 1/4 NE 1/4, Section 9, Township 1 South, Range 1 East of the Ute Meridian, as shown on the accompanying plat, and being more particularly described as follows:

Beginning at the SW Corner NE 1/4 of said Section 9;  
 Thence N 00°01'22"W along the West line SW 1/4 NE 1/4 of said Section 9 a distance of 1318.65 feet to the NW Corner SW 1/4 NE 1/4 of said Section 9;  
 Thence S 89°49'23"E along the North line SW 1/4 NE 1/4 of said Section 9 a distance of 606.75 feet;  
 Thence along the arc of a curve to the right whose radius is 173.61 feet and whose long chord bears S 51°27'10"E 43.81 feet;  
 Thence along the arc of a curve to the left whose radius is 175.00 feet and whose long chord bears S 48°33'21"E 26.55 feet to a point on the East line W 1/2 SW 1/4 NE 1/4 of said Section 9;  
 Thence S 00°00'36"E along said East line W 1/2 SW 1/4 NE 1/4 of said Section 9 a distance of 1273.85 feet to the SE Corner W 1/2 SW 1/4 NE 1/4 of said Section 9;  
 Thence N 89°49'55"W along the South line SW 1/4 NE 1/4 of said Section 9 a distance of 660.60 feet to the POINT OF BEGINNING. Containing 19.975 acres.

That said owner has caused the said real property to be laid out and surveyed as Whitewood Subdivision, a subdivision of a part of Mesa County, Colorado.

That said owner does hereby dedicate and set apart all of the streets and roads shown on the accompanying plat to the use of the public forever, and do hereby dedicate to the Public Utilities those portions of said real property which are labeled as utility easements on the accompanying plat as perpetual easements for the installation and maintenance of utilities, irrigation and drainage facilities, including but not limited to electric lines, gas lines, telephone lines, sewer and water mains; together with the right to trim interfering trees and brush; with the perpetual right of ingress and egress for the installation and maintenance of such lines. Such easements and rights shall be utilized in a reasonable and prudent manner.

That all expense for the street paving or improvements shall be furnished by the seller or purchaser, not by the County of Mesa.

IN WITNESS WHEREOF said owner has caused his name to be hereunto subscribed this 20th day of December, A.D., 1983.

Emery A. White  
 Emery A. White

STATE OF COLORADO )  
 ) ss  
 COUNTY OF MESA )

The foregoing instrument was acknowledged before me this 20th day of December, A.D., 1983, by Emery A. White.

My Commission Expires: 12/31/85  
 Witness My Hand and Official Seal.

Thomas H. Adams  
 Notary Public  
 Address: 1001 ...  
...

## CLERK AND RECORDERS CERTIFICATE

STATE OF COLORADO )  
 ) ss  
 COUNTY OF MESA ) 1351929

I hereby certify that this instrument was filed in my office at 11:03 o'clock A.M., this 26th day of January, A.D., 1984, and is duly recorded in Plat Book No. 13, Page 336-237

Carl Sawyer Clerk and Recorder By Thazel M. Husby Deputy Fees \$ 20.00  
 Filed - X - 58

## COUNTY PLANNING COMMISSION CERTIFICATE

Approved this 24th day of January, A.D., 1984.  
 County Planning Commission of the County of Mesa, Colorado.

Robert Whiting  
 Chairman

## BOARD OF COUNTY COMMISSIONERS CERTIFICATE

Approved this 24th day of January, A.D., 1984.  
 Board of County Commissioners of the County of Mesa, Colorado.

Ray R. White  
 Chairman

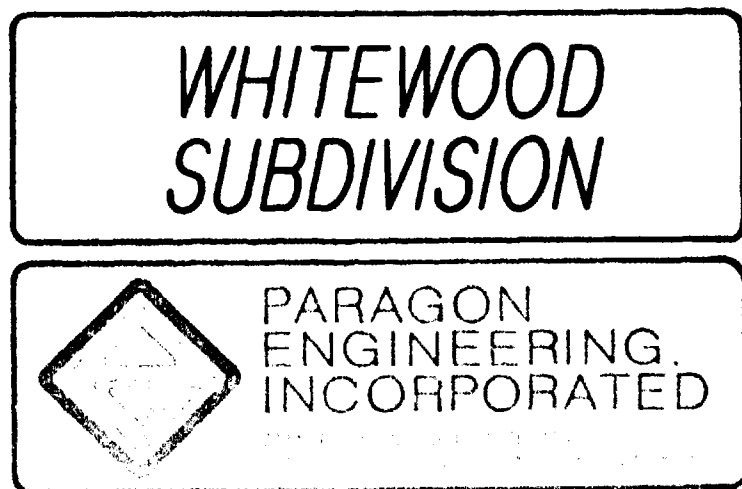
## SURVEYORS CERTIFICATE

I, James T. Patty, Jr., do hereby certify that the accompanying plat of Whitewood Subdivision, a subdivision of a part of the County of Mesa, has been prepared under my direction and accurately represents a field survey of same.

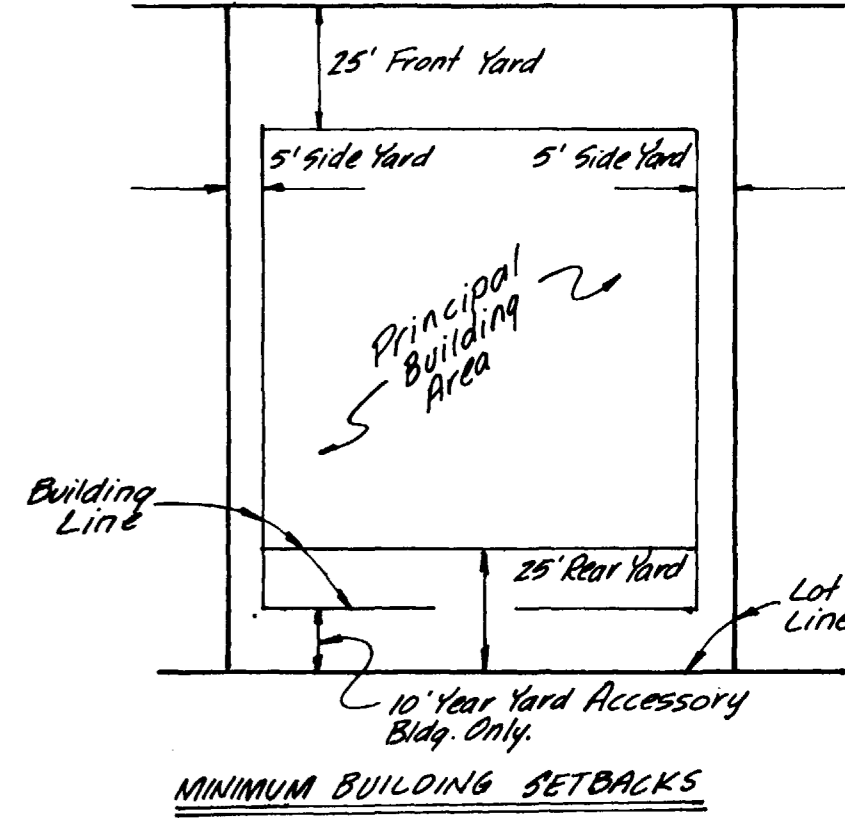
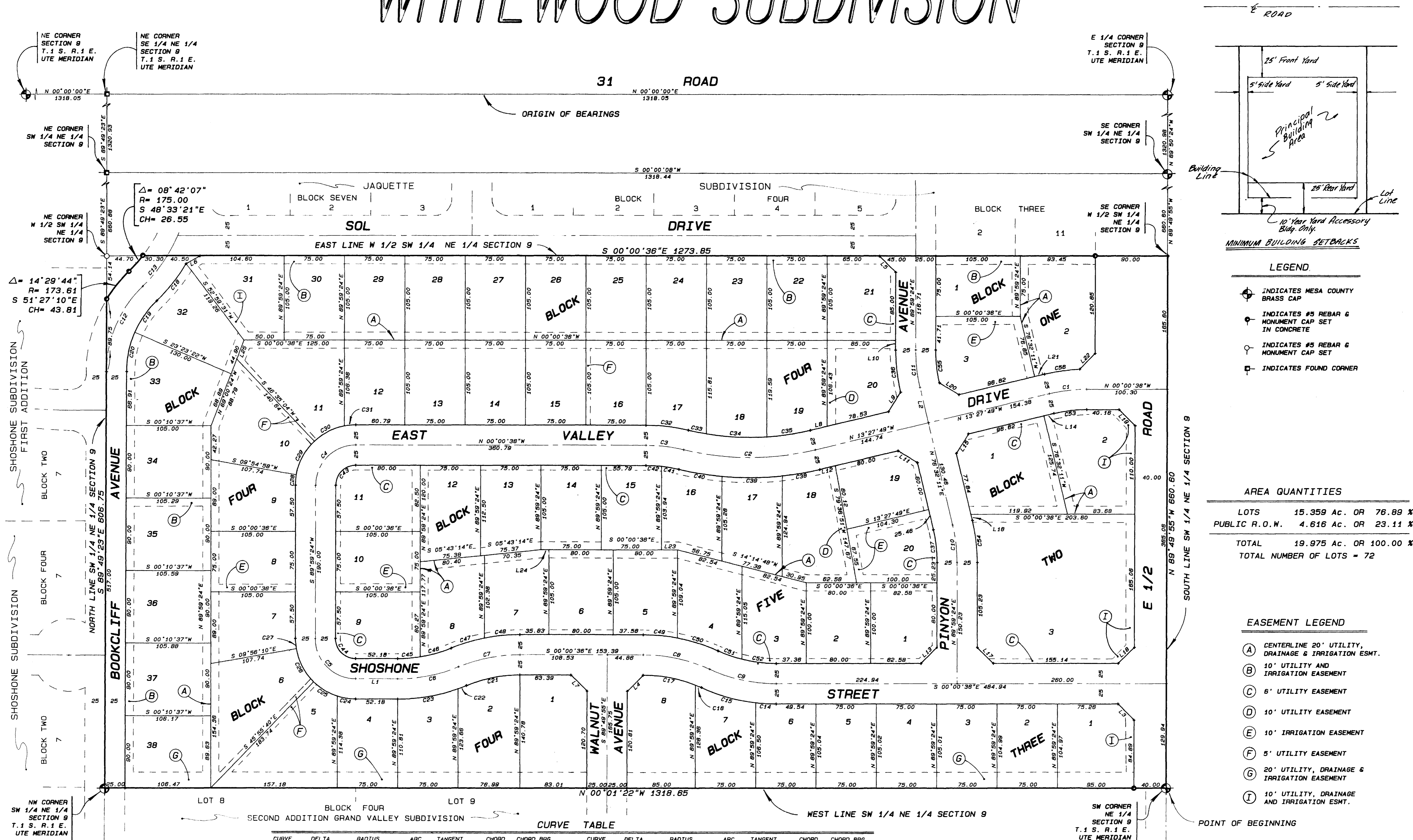
James T. Patty Jr. SEPT 15, 1983  
 James T. Patty, Jr. Date  
 Registered Land Surveyor  
 Colorado Registration No. 9960

## UTILITIES COORDINATING COMMITTEE

E. Stackton Chairman Nov. 9, 1983 Date



# WHITEWOOD SUBDIVISION



### LEGEND

- ⊕ INDICATES MESA COUNTY BRASS CAP
- ⊙ INDICATES #5 REBAR & MONUMENT CAP SET IN CONCRETE
- ⊙ INDICATES #5 REBAR & MONUMENT CAP SET
- ⊙ INDICATES FOUND CORNER

### AREA QUANTITIES

LOTS	15.359 Ac. OR	76.89 %
PUBLIC R.O.W.	4.616 Ac. OR	23.11 %
TOTAL	19.975 Ac. OR	100.00 %
TOTAL NUMBER OF LOTS = 72		

### EASEMENT LEGEND

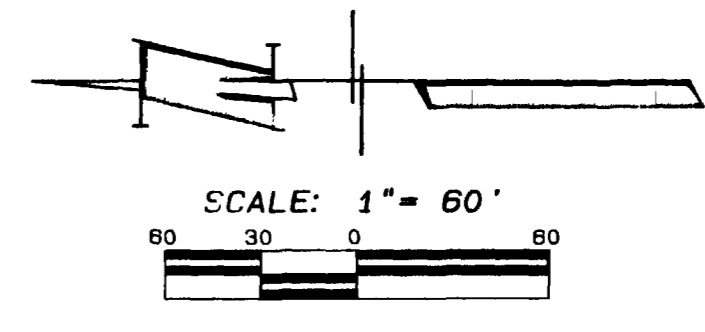
- (A) CENTERLINE 20' UTILITY, DRAINAGE & IRRIGATION ESMT.
- (B) 10' UTILITY AND IRRIGATION EASEMENT
- (C) 6' UTILITY EASEMENT
- (D) 10' UTILITY EASEMENT
- (E) 10' IRRIGATION EASEMENT
- (F) 5' UTILITY EASEMENT
- (G) 20' UTILITY, DRAINAGE & IRRIGATION EASEMENT
- (I) 10' UTILITY, DRAINAGE AND IRRIGATION ESMT.

### CURVE TABLE

CURVE	DELTA	RADIUS	ARC	TANGENT	CHORD	CHORD BRG	CURVE	DELTA	RADIUS	ARC	TANGENT	CHORD	CHORD BRG
1	13°27'13"	200.00	46.96	23.59	46.85	N 06°44'13"W	29	36°40'08"	75.00	48.00	24.85	47.18	S 61°44'59"E
2	26°59'35"	350.00	164.89	84.01	163.37	N 00°01'59"E	30	32°28'48"	75.00	42.52	21.85	41.95	S 27°10'32"E
3	13°32'22"	200.00	47.29	23.74	47.15	N 08°45'39"E	31	10°55'32"	75.00	14.30	7.17	14.28	S 05°28'22"E
4	90°00'00"	50.00	78.54	50.00	70.71	N 45°00'36"W	32	13°32'22"	225.00	53.17	26.74	53.05	N 08°48'35"W
5	90°00'00"	50.00	78.54	50.00	70.71	S 44°59'24"E	33	4°01'03"	325.00	22.79	11.40	22.78	S 11°31'14"W
6	22°19'54"	200.00	77.95	39.48	77.46	S 11°10'33"E	34	13°16'07"	325.00	75.26	37.80	75.10	S 02°52'39"W
7	22°19'54"	200.00	77.95	39.48	77.46	S 11°10'33"E	35	9°42'25"	325.00	55.06	27.80	55.00	S 08°36'37"E
8	24°22'30"	200.00	85.08	43.20	84.44	S 12°10'39"W	36	13°27'13"	175.00	41.09	20.64	41.00	N 83°15'47"E
9	24°22'30"	200.00	85.08	43.20	84.44	S 12°10'39"W	37	13°27'13"	175.00	41.09	20.64	41.00	N 83°15'47"E
10	13°27'13"	200.00	46.96	23.59	46.85	N 08°45'39"E	38	7°15'39"	375.00	47.53	23.79	47.49	N 08°48'35"W
11	13°27'13"	200.00	46.96	23.59	46.85	N 83°15'47"E	39	11°28'43"	375.00	75.13	37.80	75.00	N 00°27'48"W
12	45°37'10"	148.61	118.32	62.50	115.22	S 67°00'53"E	40	8°15'12"	375.00	54.02	27.06	53.97	N 08°24'10"E
13	13°56'40"	200.00	48.68	24.46	48.56	S 51°10'36"E	41	7°14'08"	175.00	22.10	11.08	22.09	N 09°54'42"E
14	6°29'49"	225.00	25.51	12.77	25.50	N 03°14'18"E	42	6°18'14"	175.00	19.25	9.64	19.24	N 03°08'31"E
15	17°52'41"	225.00	70.21	35.39	69.92	N 15°25'34"E	43	80°00'00"	25.00	39.27	25.00	39.36	N 45°00'36"W
16	2°12'13"	175.00	8.26	4.13	8.26	N 23°00'40"E	44	80°00'00"	25.00	39.27	25.00	39.36	N 44°59'24"W
17	2°12'13"	175.00	8.26	4.13	8.26	N 23°00'40"E	45	9°08'48"	175.00	27.94	14.00	27.94	N 04°35'00"E
18	17°40'17"	175.00	86.19	43.50	86.90	N 10°49'33"E	46	13°11'06"	175.00	40.27	20.22	40.18	S 15°44'57"E
19	14°58'22"	225.00	59.80	29.57	59.63	S 51°41'24"W	47	11°00'38"	225.00	43.24	21.69	43.17	S 16°50'11"E
20	22°24'26"	123.61	48.34	24.48	48.03	N 55°24'40"W	48	11°19'16"	225.00	44.46	22.30	44.39	S 05°40'14"E
21	22°19'54"	175.00	88.21	34.54	87.78	N 11°10'33"W	49	10°52'23"	225.00	42.70	21.41	42.63	S 05°25'35"W
22	2°12'13"	175.00	8.26	4.13	8.26	N 23°00'40"E	50	13°30'07"	225.00	53.02	26.83	52.90	S 17°36'51"W
23	2°12'13"	175.00	8.26	4.13	8.26	N 23°00'40"E	51	10°16'20"	175.00	31.37	15.73	31.33	S 19°13'44"W
24	17°42'45"	75.00	23.19	11.69	23.09	N 08°50'46"E	52	14°08'10"	175.00	43.07	21.85	42.97	S 07°02'29"W
25	26°22'11"	75.00	34.52	17.57	34.21	N 30°53'14"E	53	13°27'13"	175.00	41.09	20.64	41.00	N 06°44'13"W
26	35°59'30"	75.00	47.11	24.36	46.34	N 62°04'05"E	54	13°27'13"	225.00	52.83	26.54	52.71	S 83°15'47"W
27	9°55'34"	75.00	12.99	6.51	12.98	N 85°01'37"E	55	13°27'13"	175.00	41.09	20.64	41.00	S 83°15'47"W
28	9°55'34"	75.00	12.99	6.51	12.98	N 85°01'37"E	56	11°11'33"	225.00	44.05	22.09	43.98	S 07°21'10"E

### LINE TABLE

LINE	BEARING	DISTANCE
1	S 00°00'36"E	52.18
2	N 76°32'11"E	45.00
3	N 45°04'44"E	28.33
4	N 44°55'16"W	28.24
5	N 44°59'24"E	28.29
6	S 29°35'35"W	19.75
7	N 45°04'44"E	28.33
8	S 13°27'49"E	21.21
9	S 58°27'49"E	26.28
10	N 89°59'24"E	11.71
11	N 31°32'11"E	28.29
12	N 13°27'49"W	19.74
13	S 45°00'36"E	28.29
14	N 13°27'49"W	12.76
15	N 58°27'49"W	28.29
16	S 76°32'11"W	7.62
17	S 44°59'24"W	28.29
18	S 44°55'16"E	28.24
19	N 45°04'44"E	28.33
20	N 31°32'11"W	28.29
21	S 13°27'49"E	12.76
22	S 46°02'22"E	27.68
23	S 00°00'36"E	20.00
24	N 00°00'36"W	10.00
25	N 89°59'24"E	25.00



Page 237  
SHEET 2 OF 2

## WHITEWOOD SUBDIVISION

PARAGON ENGINEERING INCORPORATED

01139202.tif