

CRESTWOOD HIGHLANDS SUBDIVISION

DEDICATION

KNOW ALL MEN BY THESE PRESENTS:

That the undersigned, E. Lin Guy and Jean O. Guy are the owners of that real property situated in the County of Mesa, State of Colorado, and lying in the NE 1/4 NE 1/4 of Section 2, Township 1 South, Range 1 West of the Ute Meridian, as shown on the accompanying plat thereof; said tract being more specifically described by metes and bounds as follows:

Beginning at a point from whence the Northwest Corner of the NE 1/4 NE 1/4 Section 2, Township 1 South, Range 1 West of the Ute Meridian bears West 240.0 feet, thence East 170.75 feet, thence S 00° 16' W 170.0 feet, thence East 125.0 feet, thence S 00° 16' W 30.0 feet, thence S 24° 11' W 98.66 feet, thence S 00° 16' W 227.72 feet, thence N 89° 42' W 25.0 feet, thence West 200.0 feet, thence North 199.59 feet, thence 140.18 feet along the arc of a curve to the right having a radius of 1000 feet, the chord of which bears N 24° 04' 30" W 128.97 feet, thence N 16° 05' E 59.05 feet, thence 39.14 feet along the arc of a curve to the left having a radius of 150.0 feet, the chord of which bears N 08° 56' E 38.98 feet, thence N 01° 08' E 104.92 feet to the point of beginning.

That the said owners have caused the said real property to be laid out and surveyed as Crestwood Highland Subdivision, a subdivision of a part of the County of Mesa;

That said owners do hereby dedicate and set apart all of the street and roads as shown on the accompanying plat to the use of the public forever and hereby dedicate those portions of said real property which are labeled as utility easements on the accompanying plat as easements for the installation and maintenance of such utilities as telephone and electric lines, poles and cables; storm and sanitary sewer mains; water mains; gas pipe lines; and those portions of said real property which are labeled as irrigation easements on the accompanying plat as easements for the installation and maintenance of irrigation ditches, flumes and conduits;

That all expenses for installation of utilities or ditches referred to above, for grading or landscaping, and for street graveling or improvements shall be financed by the seller or purchaser—not the County of Mesa.

IN WITNESS WHEREOF, said E. Lin Guy and Jean O. Guy have caused their names to be hereunto subscribed this 10th day of November, A. D., 1964.

E. Lin Guy
E. Lin Guy
Jean O. Guy
Jean O. Guy

STATE OF COLORADO }
COUNTY OF MESA } ss

The foregoing instrument was acknowledged before me this 10th day of November, A. D., 1964, by E. Lin Guy and Jean O. Guy.

My Commission expires January 21, 1967
Witness my hand and official seal

James P. Rantzen
Notary Public

STATE OF COLORADO }
COUNTY OF MESA } ss

CLERK AND RECORDER'S CERTIFICATE

I hereby certify that this instrument was filed in my office at 3:15 o'clock P. M. Nov. 16, A. D., 1964, and is duly recorded in Plat Book No. 9, Page 197.

Arnie M. Dunston
Clerk and Recorder

Fees 36.00

By _____ Deputy

COUNTY PLANNING COMMISSION CERTIFICATE

Approved this 10th day of November, A. D., 1964.
County Planning Commission of the County of Mesa, Colorado.

By *Harold Bowman*
Chairman

BOARD OF COUNTY COMMISSIONER'S CERTIFICATE

Approved this 16th day of November, A. D., 1964.
Board of County Commissioners of the County of Mesa, Colorado.

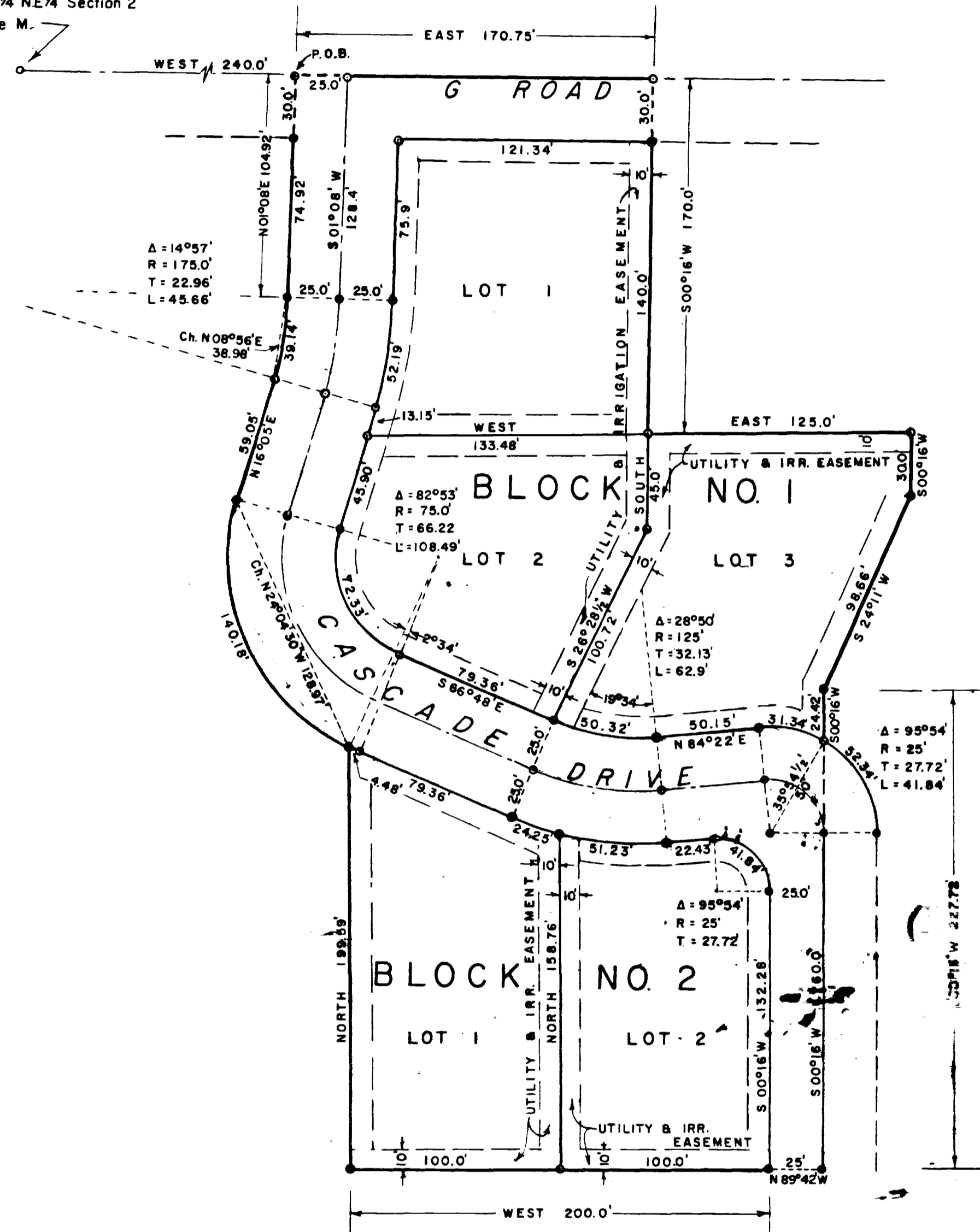
By *Arthur Jensen*
Chairman

CRESTRIDGE HEIGHTS PLANNING DISTRICT

Approved this 16th day of November, A. D., 1964.
Crestridge Heights District Planning Commission in the County of Mesa, Colorado.

By *James R. Simpson*
Chairman

NW Corner NE 1/4 NE 1/4 Section 2
T 1 S, R 1 W Ute M.



LEGEND

- Steel Pins
- Steels Pins set in Concrete

CERTIFICATE OF VACATION

The vacation of fractional parts of previously dedicated public rights of way not within public rights of way dedicated by this plat are hereby ordered.

Approved this 16th day of November, A. D., 1964.
Board of County Commissioners of the County of Mesa, Colorado.

By *Arthur Jensen*
Chairman

SURVEYORS CERTIFICATE

I, Clarence J. Bielak, do hereby certify that that the accompanying plat of Crestwood Highlands Subdivision, a subdivision of a part of the County of Mesa, has been prepared under my direction, and accurately represents a field survey of same.

By *Clarence J. Bielak*
Registered Land Surveyor



WESTERN ENGINEERS, INC.
PLAT OF
**CRESTWOOD HIGHLANDS
SUBDIVISION**
MESA COUNTY, COLORADO

SURVEYED 5.8.64 DRAWN G.V.B. TRACED P.B.C.
GRAND JUNCTION, COLO. Dwg. I-339-1 10/22/64