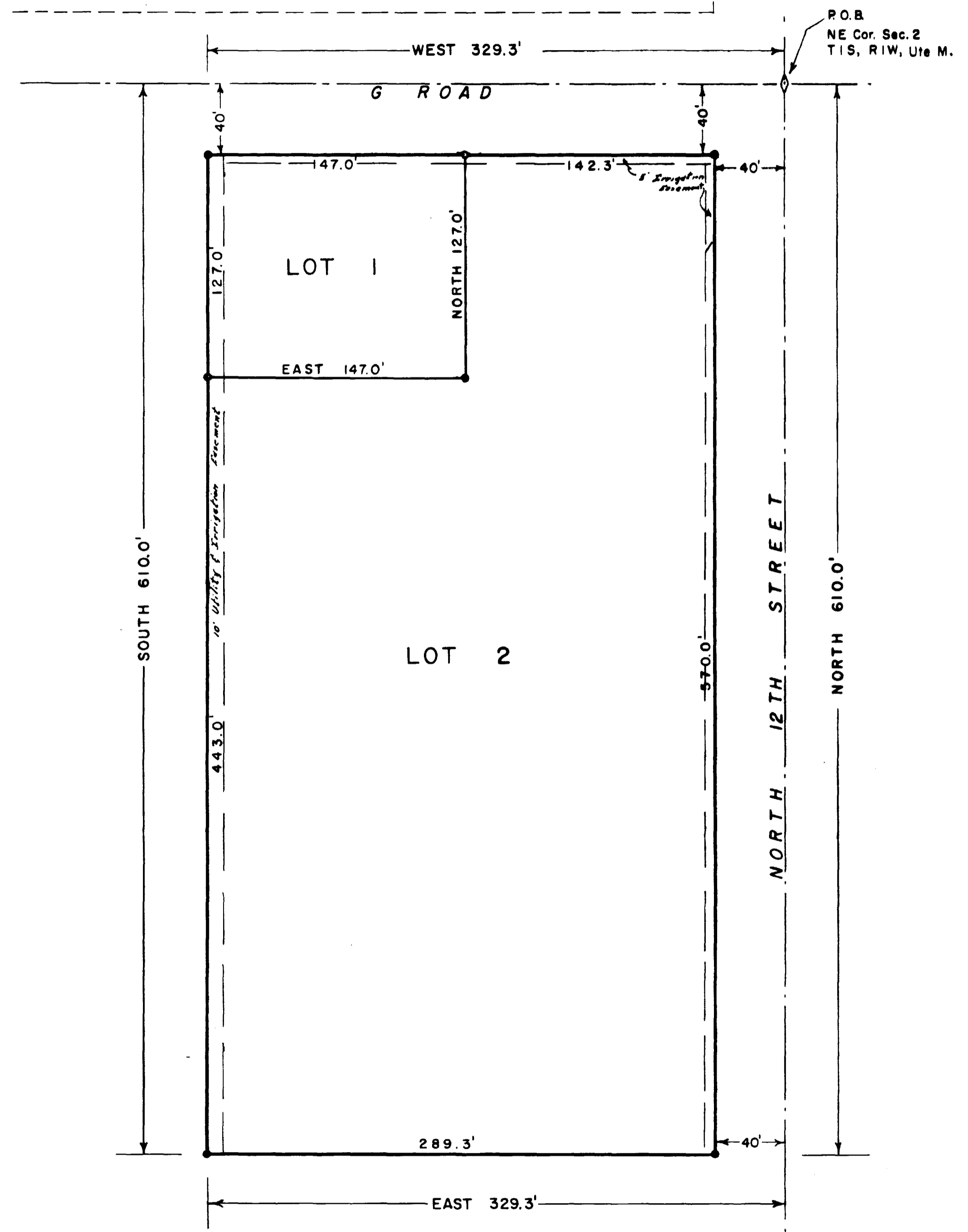


KREUTZ SUBDIVISION



LEGEND

- — Permanent Corners in Concrete
- — Steel Pins

DEDICATION

KNOW ALL MEN BY THESE PRESENTS:

That the undersigned, Maurice C. Kreutz and Dorothy Nelle Kreutz are the owners of the real property situated in the County of Mesa, State of Colorado, and lying in the E 1/4 NE 1/4 NE 1/4 of Section 2, as shown on the accompanying plat thereof; said tract being more specifically described by metes and bounds as follows:

Beginning at the Northeast corner of Section 2, Township 1 South, Range 1 West of the Ute Meridian, thence West 329.3 feet, thence South 610.0 feet, thence East 329.3 feet, thence North 610.0 feet to the point of beginning.

That the said owners have caused the said real property to be laid out and surveyed as KREUTZ SUBDIVISION, a subdivision of a part of the County of Mesa;

That said owners do hereby dedicate and set apart all of the streets and roads as shown on the accompanying plat to the use of the public forever and hereby dedicate those portions of said real property which are labeled as utility easements on the accompanying plat as easements for the installation and maintenance of such utilities as telephone and electric lines, poles and cables; storm and sanitary sewer mains; water mains; gas pipe lines; and those portions of said real property which are labeled as irrigation easements on the accompanying plat as easements for the installation and maintenance of irrigation ditches, flumes and conduits;

That all expenses for installation of utilities or ditches referred to above, for grading or landscaping, and for street graveling or improvements shall be financed by the seller or purchaser---not the County of Mesa.

IN WITNESS WHEREOF, said Maurice C. Kreutz and Dorothy Nelle Kreutz have caused their names to be hereunto subscribed this 10th day of Sept., A. D., 1960.

Maurice C. Kreutz
Maurice C. Kreutz

Dorothy Nelle Kreutz
Dorothy Nelle Kreutz

STATE OF COLORADO }
COUNTY OF MESA } ss.

The foregoing instrument was acknowledged before me this 10th day of SEPT., A. D., 1960, by Maurice C. Kreutz and Dorothy Nelle Kreutz.

My commission expires _____
Witness my hand and official seal.

Catharina H. Kearsch
Notary Public

CLERK AND RECORDER'S CERTIFICATE

STATE OF COLORADO }
COUNTY OF MESA } ss. 77722A

I hereby certify that this instrument was filed in my office at 11:10 o'clock A. M., October 14, A. D., 1960, and is duly recorded in Plat Book No. 9, Page 122.

Annie M. Dunston
Clerk and Recorder

By _____ Deputy

Fees \$ 6.00

COUNTY PLANNING COMMISSION CERTIFICATE

Approved this 15th day of Sept., A. D., 1960.
County Planning Commission of the County of Mesa, Colorado.

By *E. L. King*
Chairman

CRESTRIDGE HEIGHTS DISTRICT PLANNING COMMISSION

Approved this 26th day of September, A. D., 1960.
Crestridge Heights District Planning Commission in the County of Mesa, Colorado.

By *Charles Plack*
Chairman

BOARD OF COUNTY COMMISSIONER'S CERTIFICATE

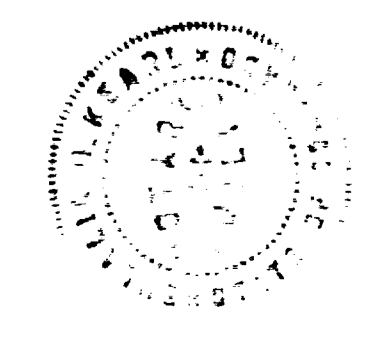
Approved this 26 day of Sept., A. D., 1960.
Board of County Commissioners of the County of Mesa, Colorado.

By *Henry J. Zupper*
Chairman

SURVEYOR'S CERTIFICATE

I, Richard J. Mandeville, do hereby certify that the accompanying plat of KREUTZ SUBDIVISION, a subdivision of a part of the County of Mesa, has been prepared under my direction, and accurately represents a field survey of same.

By *Richard J. Mandeville*
Registered Engineer & Land Surveyor



WESTERN ENGINEERS
PLAT OF
KREUTZ SUBDIVISION
MESA COUNTY, COLORADO

SURVEYED <i>C.J.B.</i>	DRAWN <i>C.J.B.</i>	TRACED <i>F.B.F.</i>
GRAND JUNCTION, COLO.		DWG. 1-214-1 SEPT. 1960

