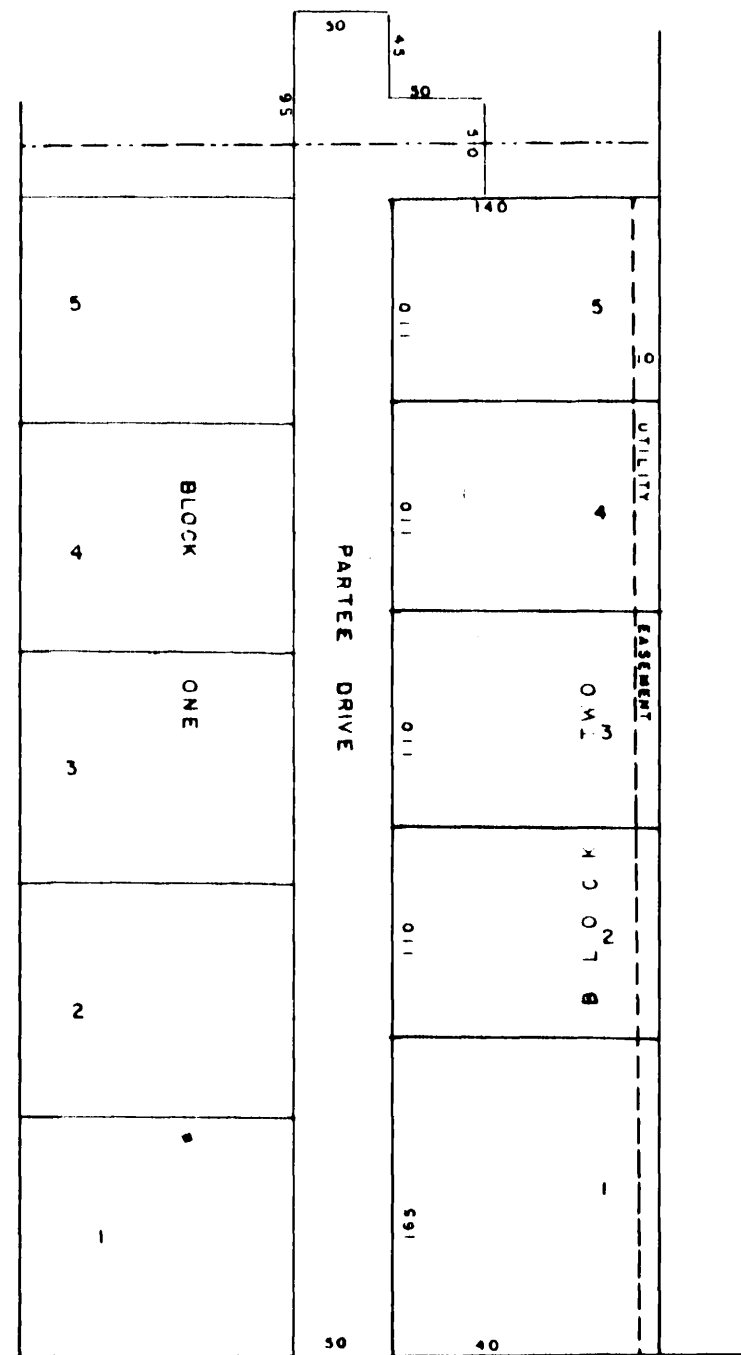


65802.5



Scale 1" = 100'



KNOW ALL MEN BY THESE PRESENTS, That Andrew L. Partee and Lema Joy, being the owners of the following described land, beginning at a point 190 feet East of the SW corner of the E1/2 - NW1/4 - SW1/4 Section 5 T13S R1E Ute Meridian, thence North 635 feet, thence East 140 feet, thence South 635 feet, thence West 140 feet to the point of beginning, have caused the same to be subdivided as shown hereon, have named said subdivision Block Two of Morning Glory Subdivision and do hereby dedicate the Streets and Easements shown hereon to the use of the public forever. In witness whereof we have hereunto affixed our hands.

Andrew L. Partee

STATE OF COLORADO } SS
 County of Mesa

The foregoing was acknowledged before me by Andrew L. Partee, Lema Joy Partee on this 17th day of _____ A. D. 1956.
 My commission expires _____

 Notary Public

I hereby certify that this is a true and correct plat of survey of the above described land and of the subdivision thereof

Ray S. George
 County Surveyor R.S.

Approved this 17 day of January A.D. 1956 by the Planning Commission of Mesa County Colorado

Ray Rankin
 Chairman

Approved this 17th day of JANUARY A.D. 1956 by the Board of County Commissioners of Mesa County Colorado

Ed Miller
 Chairman

MESA COUNTY COLORADO
 BLOCK TWO
 MORNING GLORY
 SUBDIVISION

Attest

Clara M. Wilkinson
 County Clerk

SW 1/4 E 2 SW 4 SW 4
 sec 5 T13S R1E Ute M