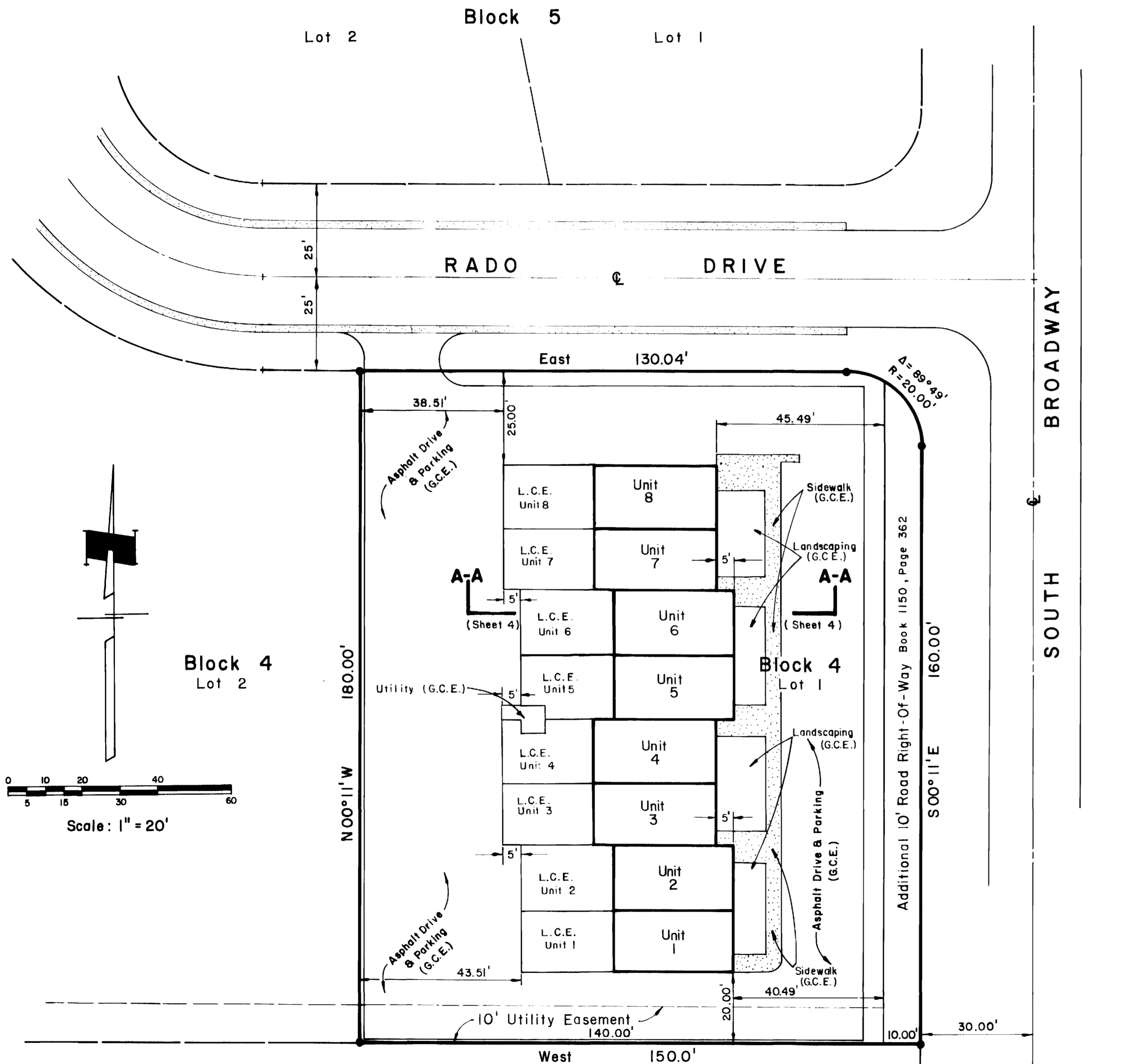


A CONDOMINIUM MAP OF CASA RADO CONDOMINIUM

GRAND JUNCTION, COLORADO



NOTES:

- 1) (G.C.E.) Indicates General Common Element
- 2) (L.C.E.) Indicates Limited Common Element
- 3) Building Set Back Dimensions shown on this sheet are to external surfaces.
- 4) Refer to Detail Unit Plan as shown on sheets 2 & 3 for location of Limited Common Element.

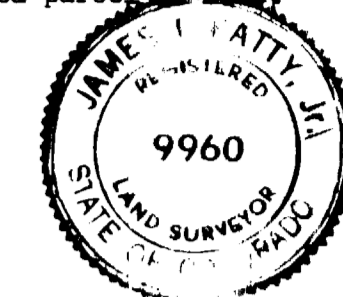
SURVEYORS CERTIFICATE

STATE OF COLORADO)
COUNTY OF MESA) ss

I, James T. Patty, Jr., a land surveyor in the State of Colorado, do hereby certify that the accompanying condominium map was made under my direct supervision of the following described parcel of land,

Lot 1, Block 4, Tiara Rado Subdivision, Mesa County, Colorado.

James T. Patty, Jr.
James T. Patty, Jr., Registered Land
Surveyor, Colorado Registration No. 9960



ENGINEERS CERTIFICATE

I, Robert P. Gerlofs, a registered engineer, do hereby certify that this map substantially depicts the location and the horizontal and vertical measurements of the buildings, the units, the unit designation, the dimensions of the units, the elevations of the finished floors and ceilings as constructed

Robert P. Gerlofs
Robert P. Gerlofs, Registered Professional
Engineer, Colorado Registration No. 9402



STATE OF COLORADO)
COUNTY OF MESA) ss

The foregoing certificates were acknowledged before me this 13th day of October A.D., 1978 by James T. Patty Jr., a registered land surveyor and Robert P. Gerlofs, a registered engineer.

Witness my hand and seal. My commission expires: July 30th 1980.

Thomas M. Payne
Notary Public

OWNERS CERTIFICATE

Real Estate Offices, Inc., a Colorado Corporation, dba Home Loan Realty & Investment Co., F. Lee Miller, President, Kenneth M. Shrum, Vice-President and Samuel T. Haupt, Secretary/Treasurer, owner of the herein described real property, certifies that this condominium map of Casa Rado Condominium has been prepared pursuant to the purposes stated in the Condominium Declaration for Casa Rado Condominium dated A.D., 1978, recorded coincident with the filing of this map in the records of Mesa County, Colorado.

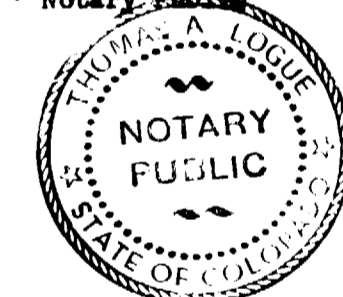
Real Estate Offices, Inc., a Colorado Corporation, dba Home Loan Realty & Investment Co.
F. Lee Miller *Kenneth M. Shrum* *Samuel T. Haupt*
F. Lee Miller, President Kenneth M. Shrum, Vice-President Samuel T. Haupt, Secretary/Treasurer

STATE OF COLORADO)
COUNTY OF MESA) ss

The foregoing owners certificate was acknowledged before me this 18th day of October A.D., 1978 by F. Lee Miller, President, Kenneth M. Shrum, Vice-President and Samuel T. Haupt, Treasurer of Real Estate Offices, Inc., a Colorado Corporation dba Home Loan Realty & Investment Co.

Witness my hand and official seal. My commission expires: Aug 9th 1981.

Thomas A. Payne
Notary Public



CLERK AND RECORDERS CERTIFICATE

STATE OF COLORADO)
COUNTY OF MESA) ss

I hereby certify that this instrument was filed in my office at 3:45 o'clock P.M. this 3rd day of November A.D., 1978 and is duly recorded in Plat Book No. , Page .0-68

Carl Sawyer *By Hazel M. Huskey*
Clerk and Recorder Deputy

Fees \$ 40.00

Approved this 27th day of OCTOBER A.D., 1978 by Edward H. Frost.

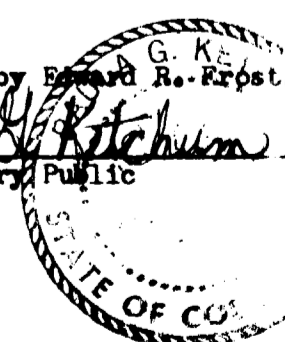
Edward H. Frost
Edward H. Frost, President
Valley Federal Savings &
Loan Association

STATE OF COLORADO)
COUNTY OF MESA) ss

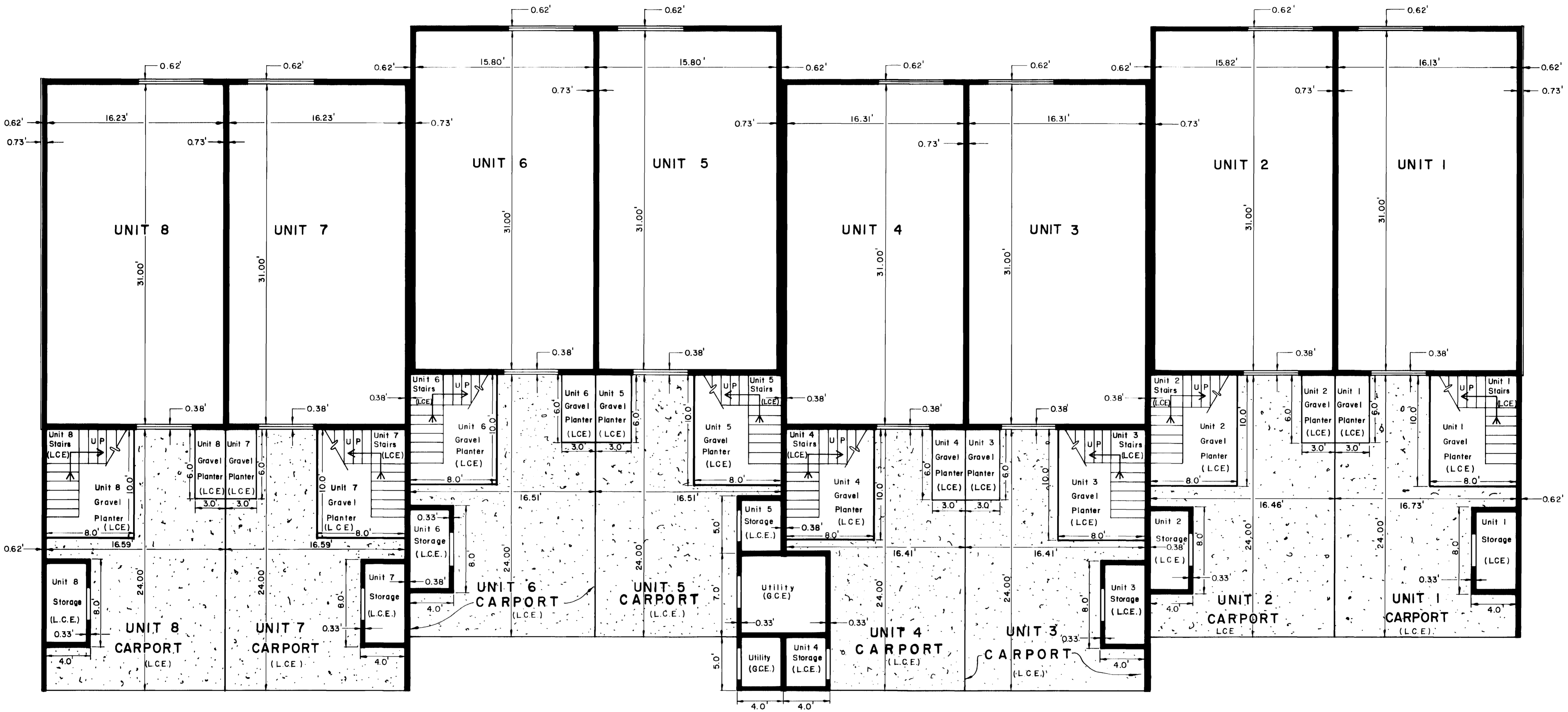
The foregoing was acknowledged before me this 27 day of October A.D., 1978 by Edward H. Frost.

Witness my hand and official seal. My commission expires: June 24, 1981.

Charles J. Ritchum
Notary Public



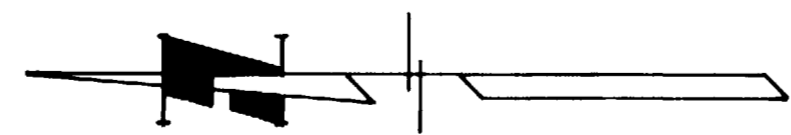
Site Plan	Sheet 1 of 4
A Condominium Map of CASA RADO CONDOMINIUM	
PARAGON ENGINEERING INC.	



DETAIL UNIT PLAN

lower level

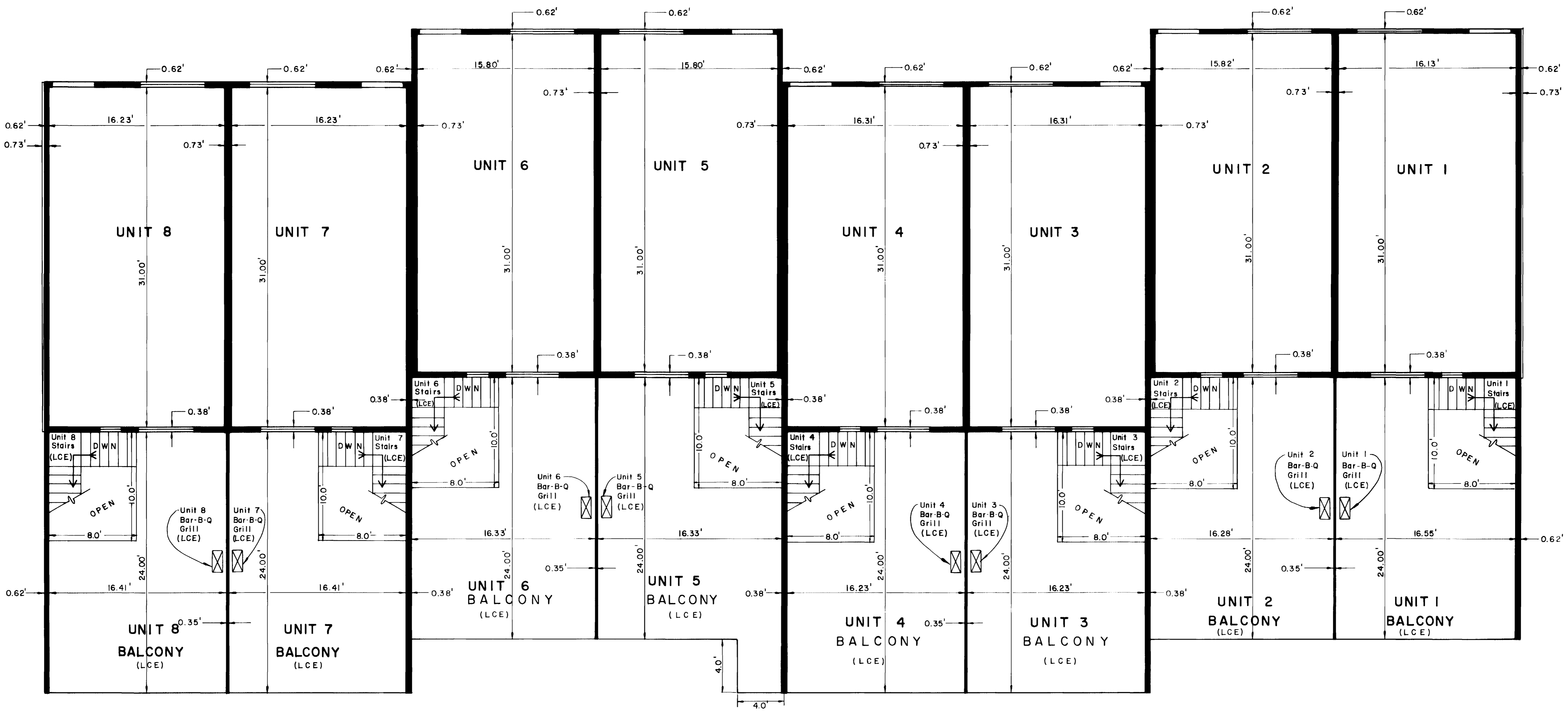
Scale: 1" = 5'-0"



NOTES:

- 1) (G.C.E.) Indicates General Common Element
- 2) (L.C.E.) Indicates Limited Common Element
- 3) All shown stairs, storage, carports & gravel planters for Limited Common Element for the indicated unit.

DETAIL UNIT PLAN - lower level		Sheet
		2 of 4
A Condominium Map of		
CASA RADO CONDOMINIUM		
PARAGON ENGINEERING, INC.		



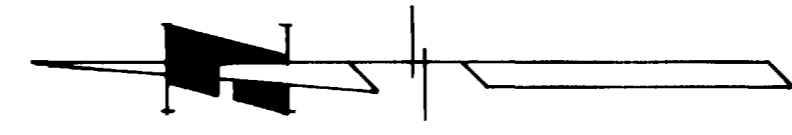
DETAIL UNIT PLAN

upper level

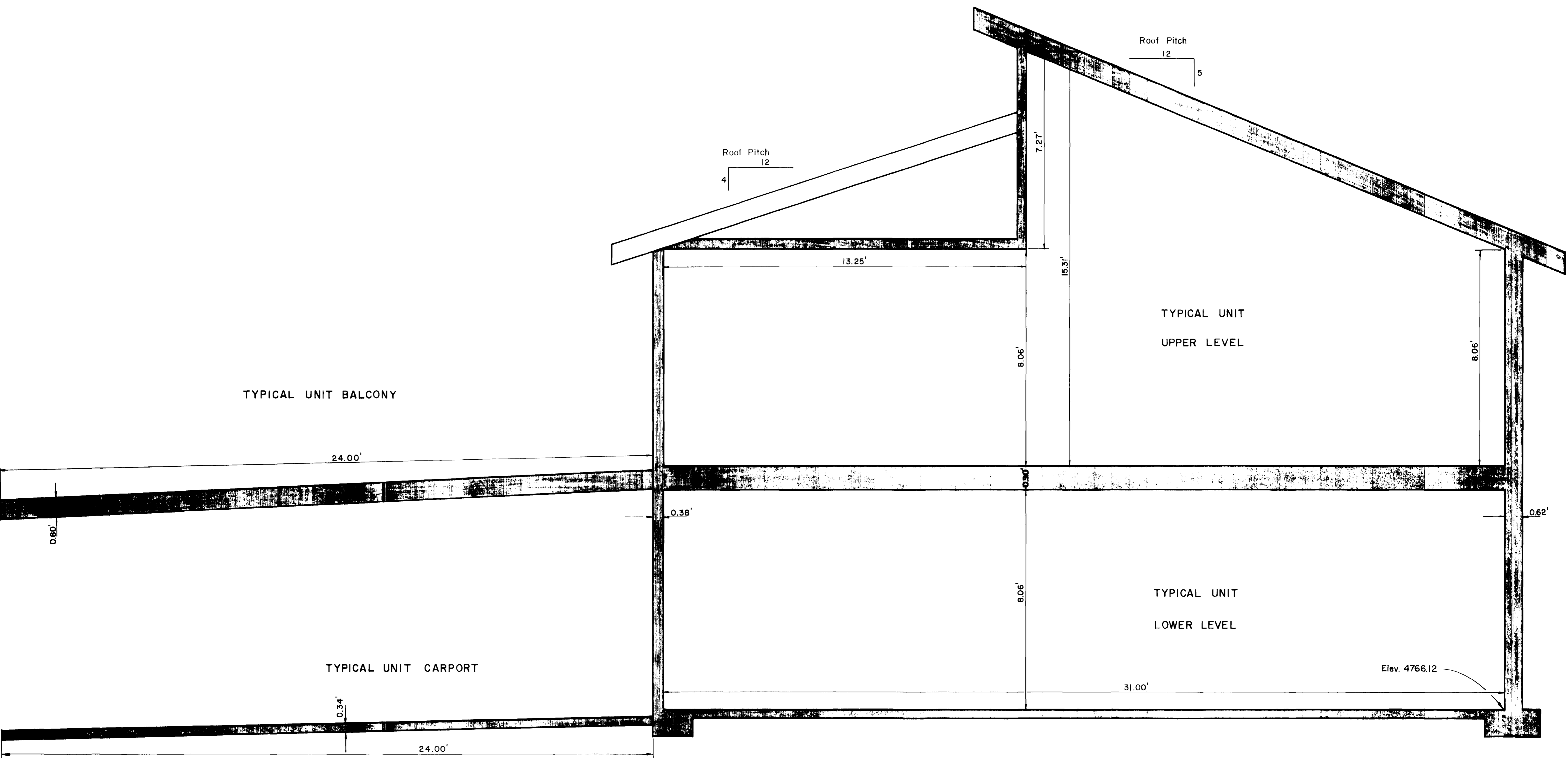
Scale: 1" = 5'-0"

NOTES:

- 1) All shown stairs and balconies are Limited Common Element for the indicated unit.



DETAIL UNIT PLAN- upper level		Sheet
		3 of 4
A Condominium Map of		
CASA RADO CONDOMINIUM		
PARAGON ENGINEERING, INC.		



NOTES:
All Units are the same Elevation.

TYPICAL UNIT SECTION A - A
(all units identical)

Scale: 1" = 2'-0"

Section A-A	Sheet 4 of 4
A Condominium Map of CASA RADO CONDOMINIUM	
PARAGON ENGINEERING, INC.	