

MESA COUNTY, COLORADO.

KNOW ALL MEN BY THESE PRESENTS: That the undersigned, Loyal A. Sutherland and Edna Sutherland, Lorry A. Sutherland and Betty Lou Sutherland, being the owners of the following described land, from the South 1/4 corner of section 7 T 1 S R 1 W Ute Meridian, thence N 15° 35' W 630.8 feet, thence N 88° 13' W 72.3 feet for the point of beginning, thence along a curve to the right with a radius of 50 feet the chord of which bears S 33° 37' E 81.3 feet, thence S 57° 43' E 128.7 feet, thence S 42° 12' W 50.8 feet, thence N 57° 43' W 111.1 feet, thence S 22° 15' W 170 feet, thence West 300 feet, thence N 25° 43' E 66 feet, thence N 48° 11' E 120 feet, thence N 18° 01' E 50 feet, thence N 1° 05' W 50 feet, thence N 29° 38' W 50 feet, thence N 52° W 94 feet, thence N 27° 22' E 102 feet, thence N 88° 54' E 165.8 feet, thence S 1° 47' W 151.8 feet, thence S 88° 13' E 88.7 feet to the point of beginning, have caused the same to be surveyed and platted as shown hereon, and they have named the same IRIS COURT; they do hereby set apart and dedicate the court, as shown hereon to the use of the public forever, they here by dedicate the utility and irrigation easements for the construction, operation and maintenance of telephone and power lines, sewer, water and gas mains and irrigation ditches and other utilities. It is understood and agreed that the County of Mesa shall not be held liable for the cost of construction of roads, ditches or utilities within this subdivision.

In witness whereof we have hereunto placed our hands this 26th day of June 1959

STATE OF COLORADO }
County of Mesa } SS

Loyal A. Sutherland
LOYAL A. SUTHERLAND

Edna Sutherland
EDNA SUTHERLAND
Lorry A. Sutherland
LORRY A. SUTHERLAND
Betty Lou Sutherland
BETTY LOU SUTHERLAND

The foregoing instrument was acknowledged before me this 26th day of June AD 1959, by Loyal A. Sutherland, Edna Sutherland, Lorry A. Sutherland and Betty Lou Sutherland

My commission expires January 6, 1963

S. M. Finnessey
Notary Public

APPROVED:

By the Redlands Planning Commission this 29 day of June 1959

WCRump

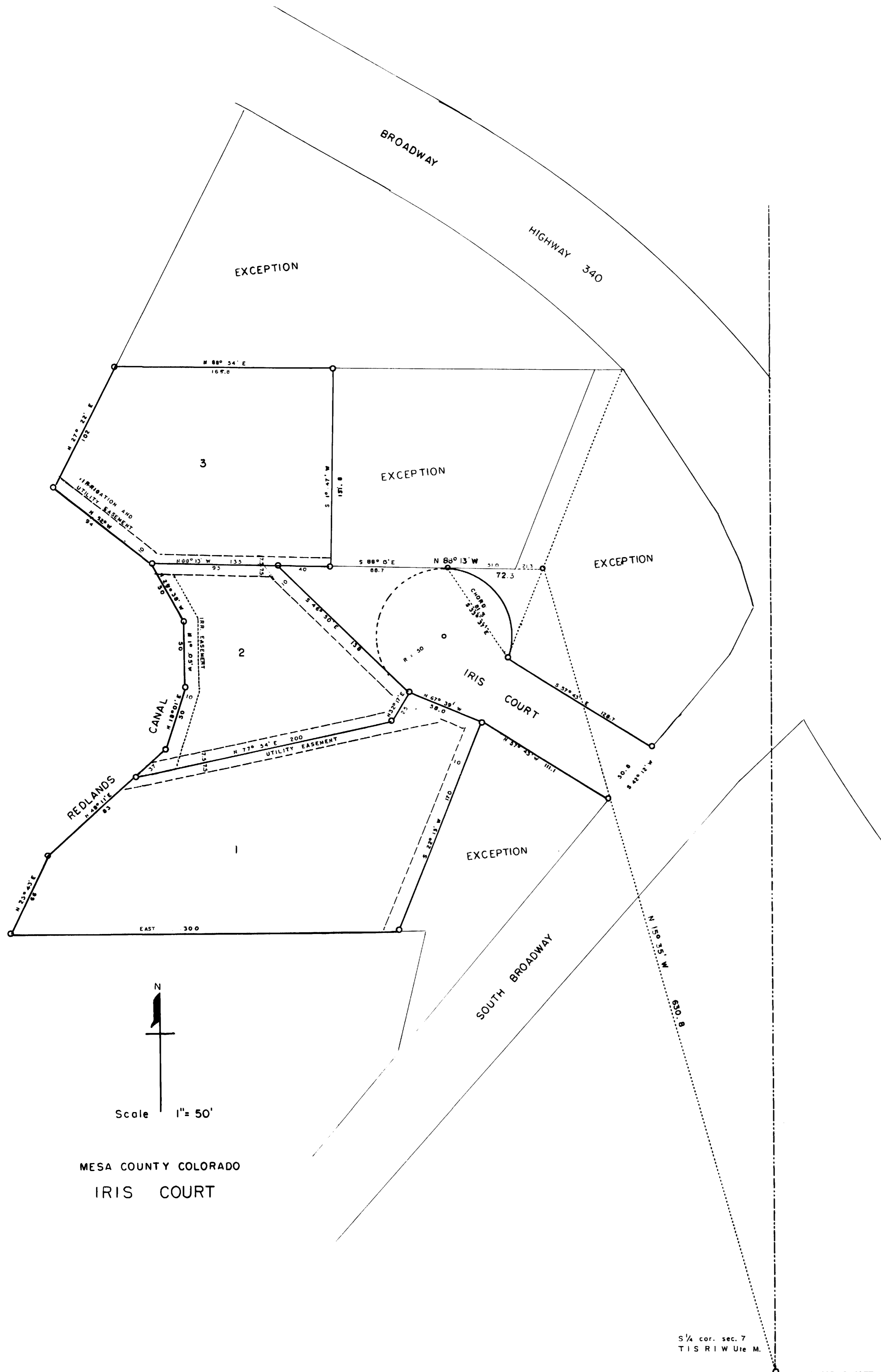
By Macelfeas
Chairman

By the Mesa County Planning Commission this 30th day of June 1959

By Edwin Gray
Chairman

By the County Commissioners of Mesa County this 30th day of June 1959

By R.E. Saunders
Chairman



I Roy L. George certify that this is a true and correct plat of survey of the above described land and of the subdivision thereof.

Roy L. George
County Surveyor, R. C. S.

I certify that this instrument was filed in my office at 2:50 O'clock P M on the 30 day of Jun 1959 and is recorded in plat book 9 at page 77

County Clerk and Recorder

By Deputy

