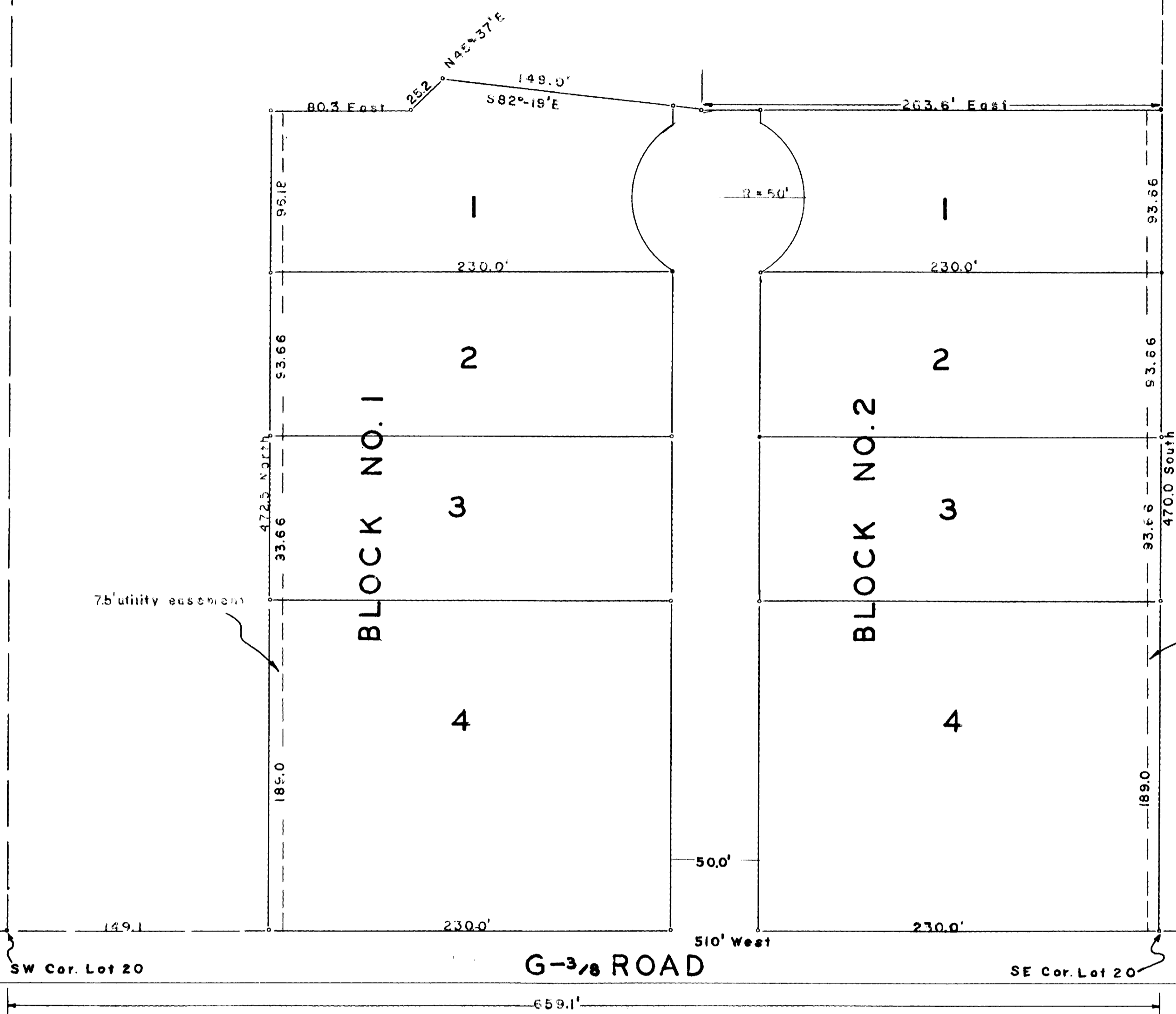


LOT 21

LOT 20

LOT 19



Note: Circles indicate points established on the ground

Approved by the Mesa County Planning Commission

R. Rankin
Chairman

KNOW ALL MEN BY THESE PRESENTS: That W.F. Wooters & Rachel E. Wooters, the owners of the following described land: Beginning at the SE corner Lot 20, Pomona Park, thence, West 510'; thence, North 472.5'; thence, East 80.3'; thence, N45°-37'E 25.2'; thence, S82°-19'E 149.0'; thence, East 263.6'; thence, South 470.0' to point of beginning, have caused same to be surveyed and platted as shown hereon, have named said place Wooters Subdivision and they do dedicate the street and utility easements to the use of the public forever. All expenses involving improvements for a water system, sanitary sewer system, gas service, electrical service, grading and landscaping, storm sewer system, curbs and gutters, street pavements and sidewalks shall be financed by the purchaser or seller, not by the County of Mesa. In witness whereof we have hereon placed our hands:

W.F. Wooters

Rachel E. Wooters

Approved by the County Commissioners of Mesa County, Colorado

STATE OF COLORADO
County of Mesa

Henry J. Zupper
Chairman

The foregoing instrument was acknowledged before me by W.F. Wooters & Rachel E. Wooters on the 26th day of July AD 1955. My commission expires January 6, 1959.

L.M. Finnessey
Notary Public

I hereby certify that this is a true and correct plat of survey of the above described land and the subdivision of the same.

Ward O. Cusbury

642380

11 31
8 u
47