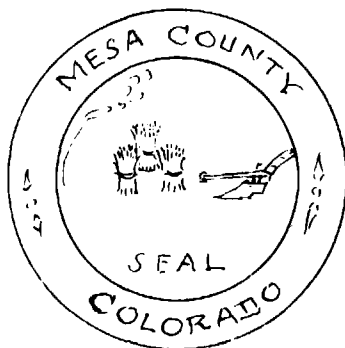


Know all men by these presents: that we George W. Winters owner of lots one to five inclusive in Block one; Lots one to five and thirteen to twenty seven inclusive in Block two; all of Blocks three, four, five and six; lots nine to thirty two inclusive in Block seven; all of Blocks ten, eleven, twelve, fourteen and fifteen and lot one in Block sixteen of Benton Canon's First Subdivision by R. E. Meserve owner of lots one in Block seven, of Benton Canon's first Subdivision all in Mesa County, Colorado, have laid out and plotted the above described lots and blocks and here with make and record an Amended Plat of Benton Canon's First Subdivision, and dedicate to public use forever the streets and alleys designated on said plat. Given under our hands and seals this 24th day of April A.D. 1900.

George W. Winters (Seal)
By Benton Canon
His Attorney in fact
R. E. Meserve (Seal)

STATE OF COLORADO } ss. I, Henry Nichols, County Clerk and Recorder in and for said County in the State aforesaid do hereby certify that R. E. Meserve and George W. Winters by Benton Canon his attorney in fact appeared before me this day in person and they acknowledged that they signed, sealed and delivered the annexed plat and dedication as their free and voluntary act and deed for the uses and purposes therein set forth, and the said Benton Canon attorney in fact for George W. Winters acknowledged the same to be the free act and deed of his principal. Given under my hand and official seal this 24th day of April A.D. 1900.

Henry Nichols
County Clerk and Recorder



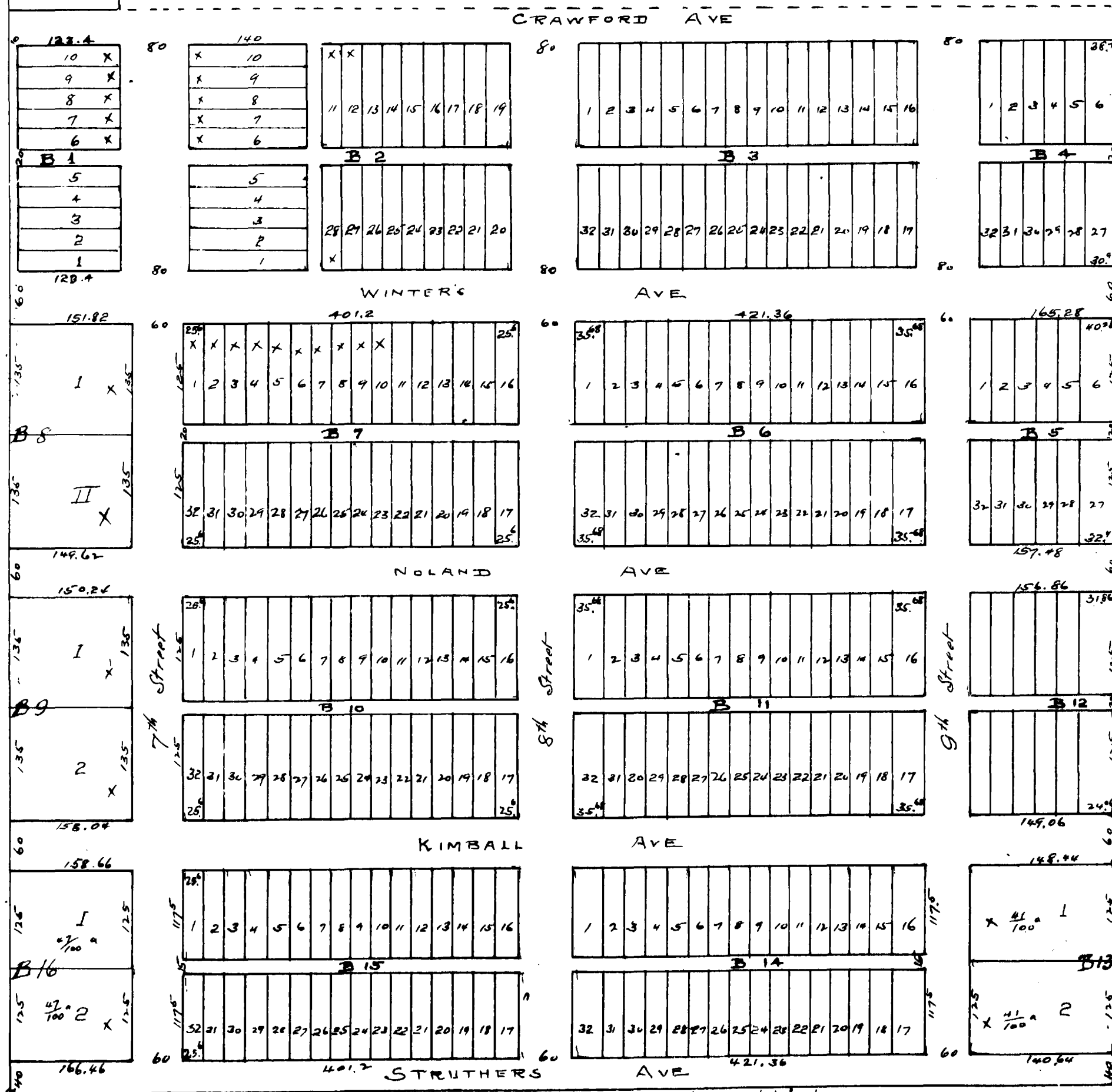
Grand Junction Milling and Elevator Co.

117077 I 4:20 P.M. Dec 7 1913

AMENDED PLAT

OF BENTON CANON'S FIRST SUBDIVISION
SW 4 NE 4 Sec 23 T15 R1W Ute P.M. in Mesa County, Colorado.

Scale 1 inch = 120 feet



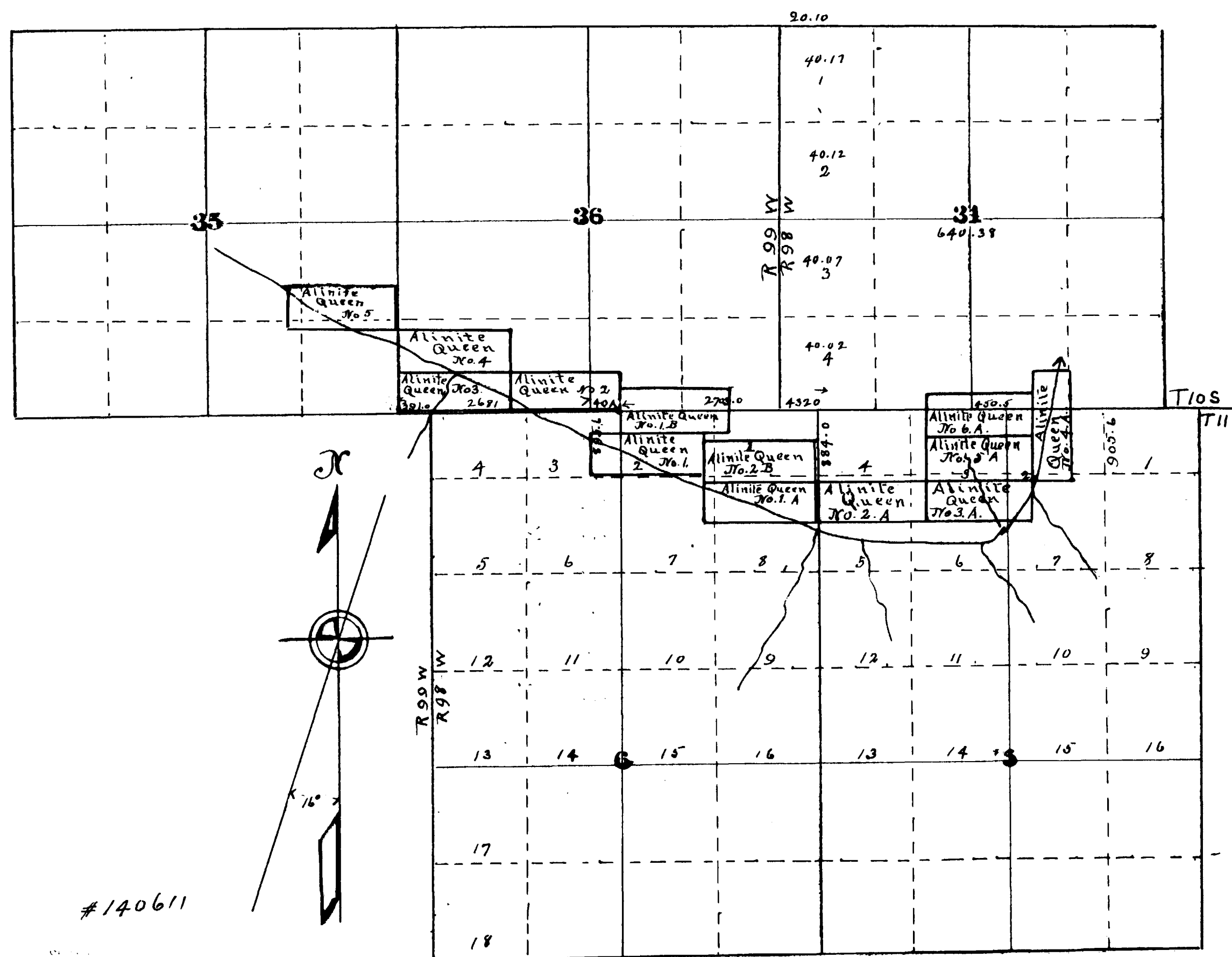
All lots not otherwise marked have 25 foot frontage
All lots marked with a X are sold
Groupings by Meserve

9A

Re-recorded to correct error in the heading of plat.
The same erroneously stating that said sub-
division was in Twp. 25.751 E Ute P.M.

Map of Allrite Queen Lode Claims

Projects of James Dwyer, J. H. McVey, C. B. Smith
J. Ed Bryson ex ar.
Survey by P. C. Hammond Sept 25 to Oct 5, 1917
Scale: 4" = 1 Mile



#140611

Nov. 12, 1917
1013 A 30
By _____ recorded
_____ recorder
_____ Deputy

9A

B-4

P-39