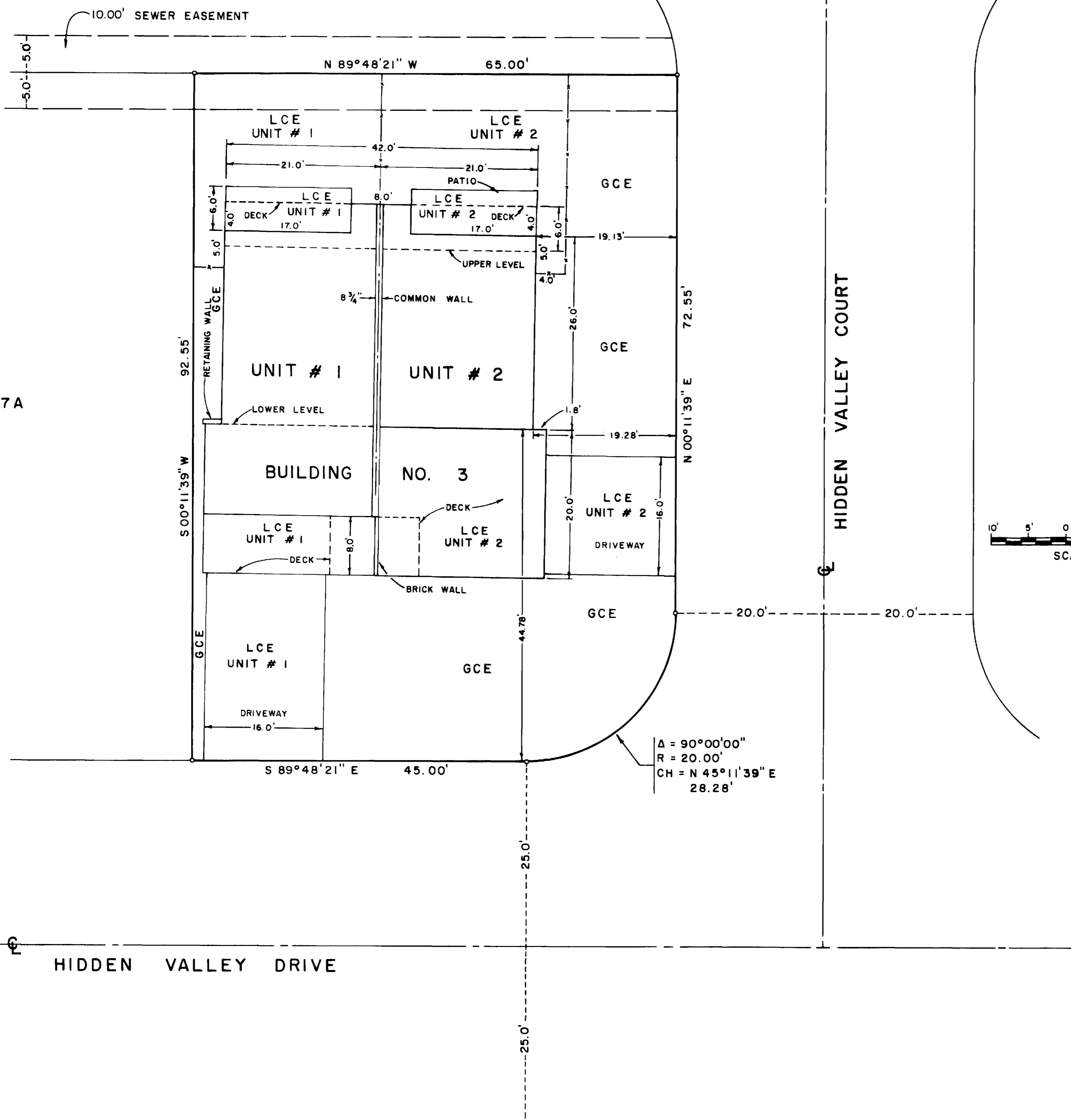


LOT 19A



THIRD AMENDED CONDOMINIUM MAP OF CIMARRON CONDOMINIUMS MESA COUNTY, COLORADO

OWNERS CERTIFICATE

Craig A. Davis and H. Martin Davis, owners of the herein described real property, do hereby certify that this map of Cimarron Condominiums has been prepared pursuant to the declarations of Cimarron Condominiums recorded July 13, 1979, Book 1209, Pages 539 through 559 and the Amendment to Condominium Declaration for an annexation of land to Cimarron Condominiums recorded March 6, 1980, Book 1247, Pages 431 and 432 in the records of Mesa County, Colorado.

Attest:
Craig A. Davis *H. Martin Davis*
 Craig A. Davis H. Martin Davis

STATE OF COLORADO)
 COUNTY OF MESA) ss

The foregoing instrument was acknowledged before me this 24th day of March, A.D., 1980, by Craig A. Davis and H. Martin Davis as owners of Cimarron Condominiums.

Witness my hand and official seal.

My commission expires 9-13-82
Judy K. Wickham
 Notary Public

CLERK AND RECORDERS CERTIFICATE

STATE OF COLORADO)
 COUNTY OF MESA) ss Reception # 1219462

I hereby certify that this instrument was filed in my office at 11:20 o'clock A.M., this 24th day of March, A.D., 1980 and is duly recorded in Plat Book No. , Page .
0-98

Earl Sawyer _____
 Clerk and Recorder Deputy Fees \$ 10.00

SURVEYOR'S CERTIFICATE

I, J. Boyd Peterson, do hereby certify that this plat was made from notes of a field survey made under my direct responsibility, supervision, and checking. Said plat represents the location of the Cimarron Condominiums on Lot 18A, Block 5, in The Ridges Subdivision, Filing No. 3 as filed in the Office of the Clerk and Recorder of Mesa County. And I further certify that the Condominium map substantially depicts the location of the building, the units, the unit designation, the dimensions of the units and the building symbol. Such condominium map was prepared subsequent to substantial completion of the improvements.

J. Boyd Peterson
 J. Boyd Peterson, Colo. Reg. No. 5837



AMENDMENT CERTIFICATE

This map is an amendment to that certain condominium map relating to Lot 16 A, Block 5, The Ridges Subdivision Filing No. 3, previously recorded on July 25, 1979, in file 087, reception no. 1198029 at the Mesa County Clerk and Recorders Office.

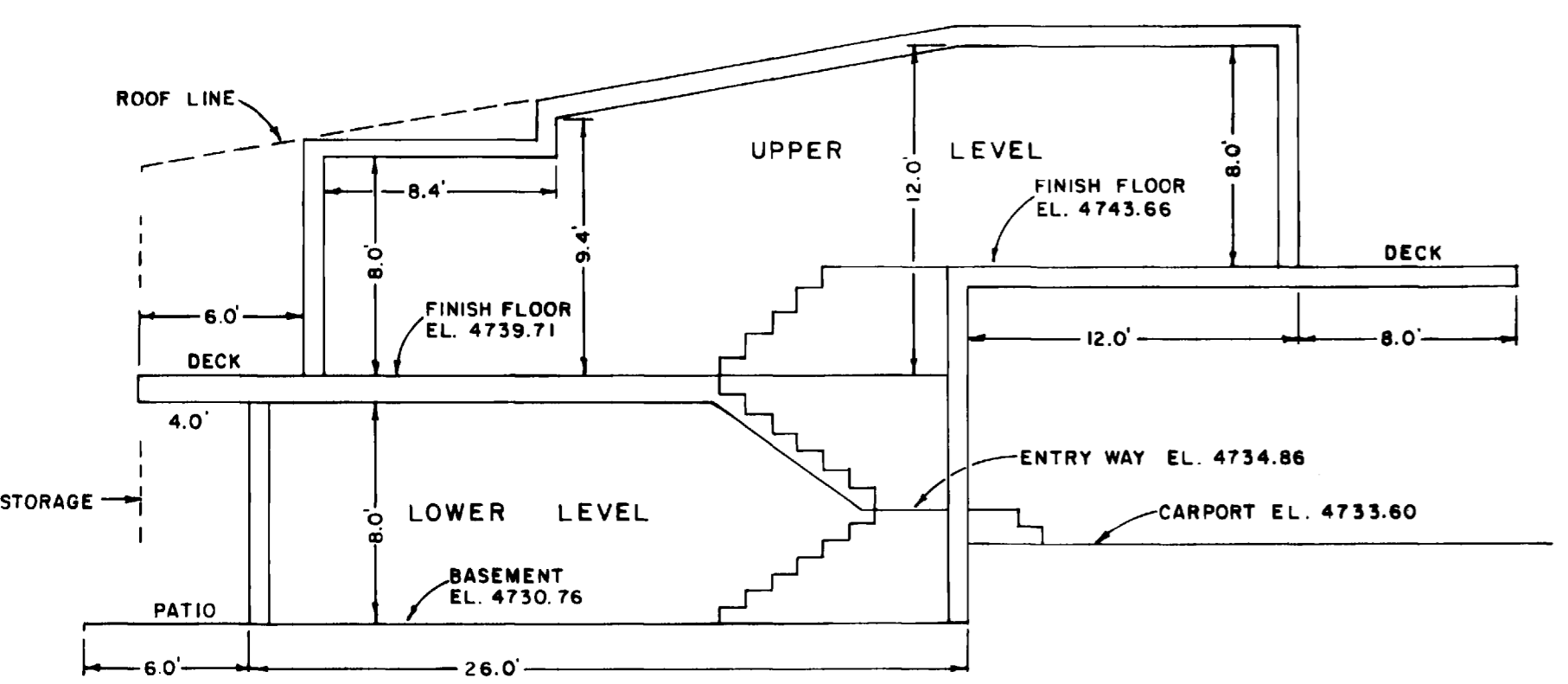
Craig A. Davis *H. Martin Davis*
 Craig A. Davis H. Martin Davis

NOTES:

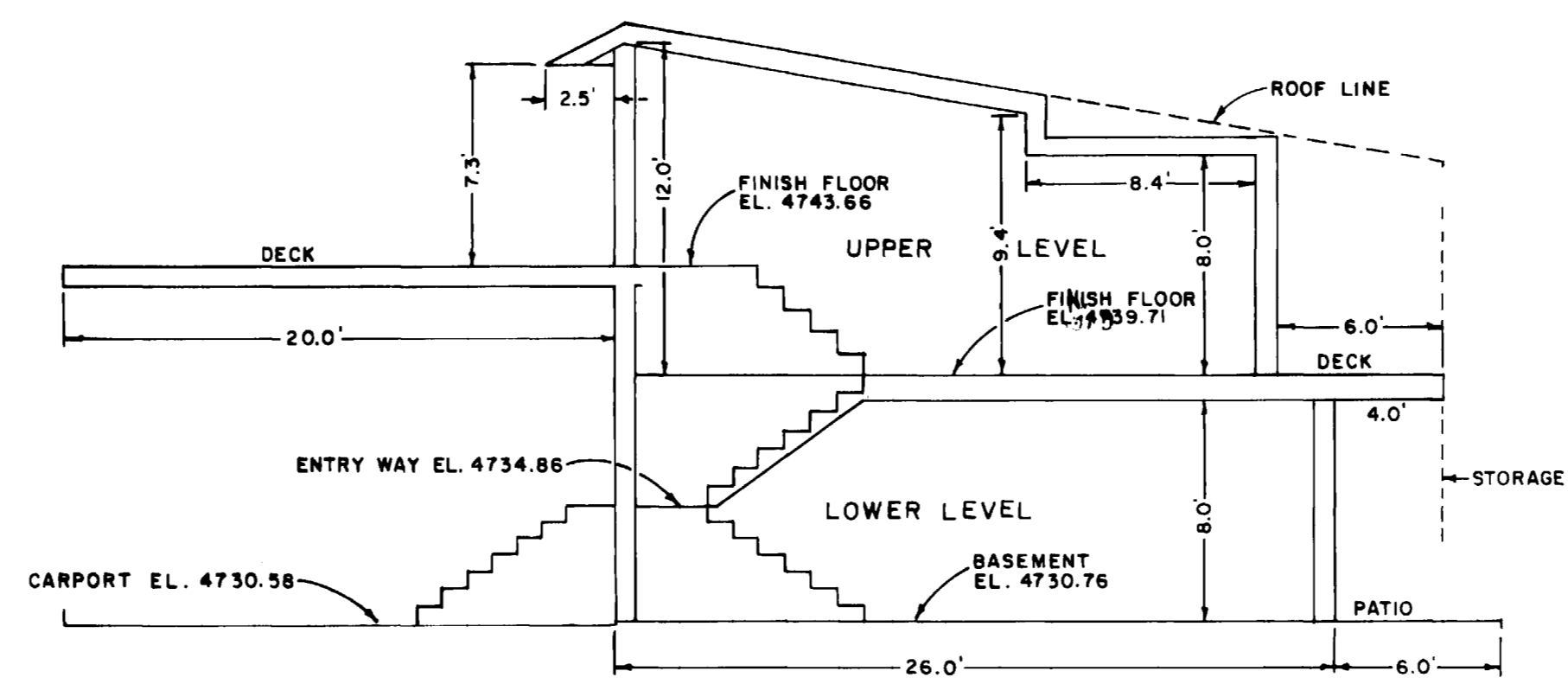
GCE INDICATES GENERAL COMMON ELEMENT
 LCE INDICATES LIMITED COMMON ELEMENT

LEGEND

o # 5 REBAR FOUND



UNIT 1, SIDE ELEVATION DETAIL
 SCALE: 1" = 6'



UNIT 2, SIDE ELEVATION DETAIL
 SCALE: 1" = 6'

WESTERN ENGINEERS, INC.
 THIRD AMENDED
 CONDOMINIUM MAP OF
 CIMARRON CONDOMINIUMS
 UNITS 1 & 2, BUILDING NO. 3
 LOT 18A, BLOCK 5
 THE RIDGES FILING NO. 3
 MESA COUNTY, COLORADO

SURVEYED D.C. CHECKED J.B.P.
 GRAND JUNCTION, COLO. DWG. 2696-878-4 3/21/80