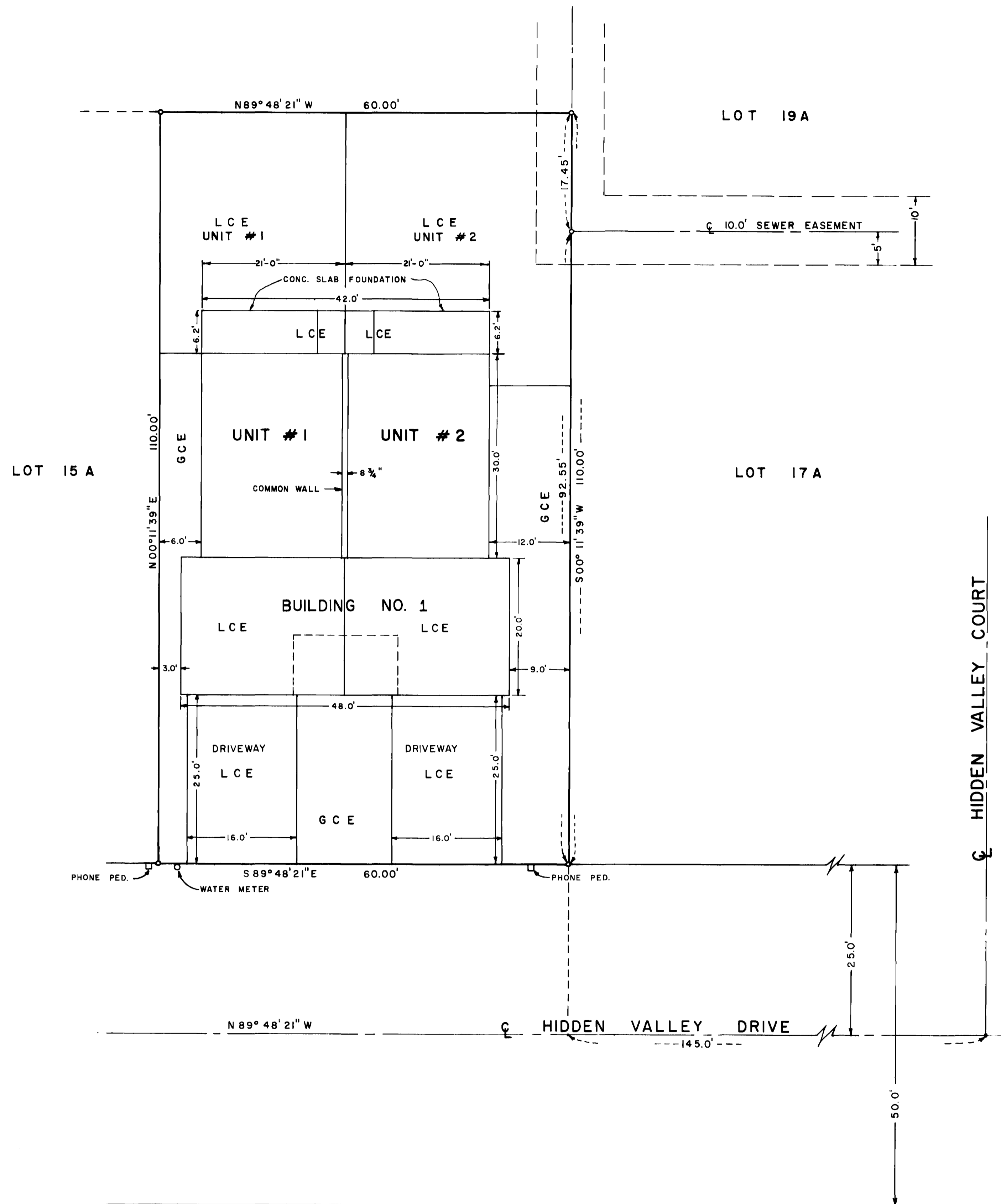


CONDOMINIUM MAP OF CIMARRON CONDOMINIUMS MESA COUNTY, COLORADO



Craig A. Davis and H. Martin Davis, owners of the herein described real property, do hereby certify that this map of Cimarron Condominiums has been prepared pursuant to the declarations of Cimarron Condominiums and recorded coincident with the filing of this map in the records of Mesa County, Colorado.

Attest:

Craig A. Davis
Craig A. Davis

H. Martin Davis
H. Martin Davis

STATE OF COLORADO)
COUNTY OF MESA) ss

The foregoing instrument was acknowledged before me this 13th day of July, A.D. 1979, by Craig A. Davis and H. Martin Davis as owners of Cimarron Condominiums.

Witness my hand and official seal.

My commission expires November 4, 1982.

Margaret R. Coffey
Notary Public

CLERK AND RECORDERS CERTIFICATE

STATE OF COLORADO)
COUNTY OF MESA) ss 1197103

I hereby certify that this instrument was filed in my office at 4:22 o'clock P. M., this 13th day of July, 1979, A.D., 1979 and is duly recorded in Plat Book No. 0-82, Page Filed, Rec # 1197103.

Earl Sawyer
Clerk and Recorder

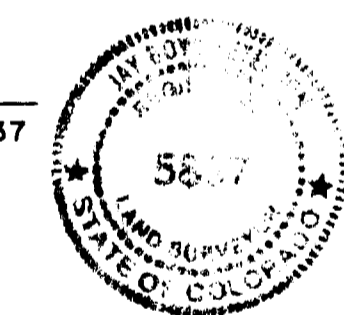
Neal M. Huskey
Deputy

Fees \$ 10.00

SURVEYOR'S CERTIFICATE

I, J. Boyd Peterson, do hereby certify that this plat was made from notes of a field survey made under my direct responsibility, supervision, and checking. Said plat represents the location of the Cimarron Condominiums in The Ridges Subdivision, Filing No. 3 as filed in the Office of the Clerk and Recorder of Mesa County. And I further certify that the Condominium map substantially depicts the location of the building, the units, the unit designation, the dimensions of the units and the building symbol. Such condominium map was prepared subsequent to substantial completion of the improvements.

J. Boyd Peterson
J. Boyd Peterson L. S. No. 5837

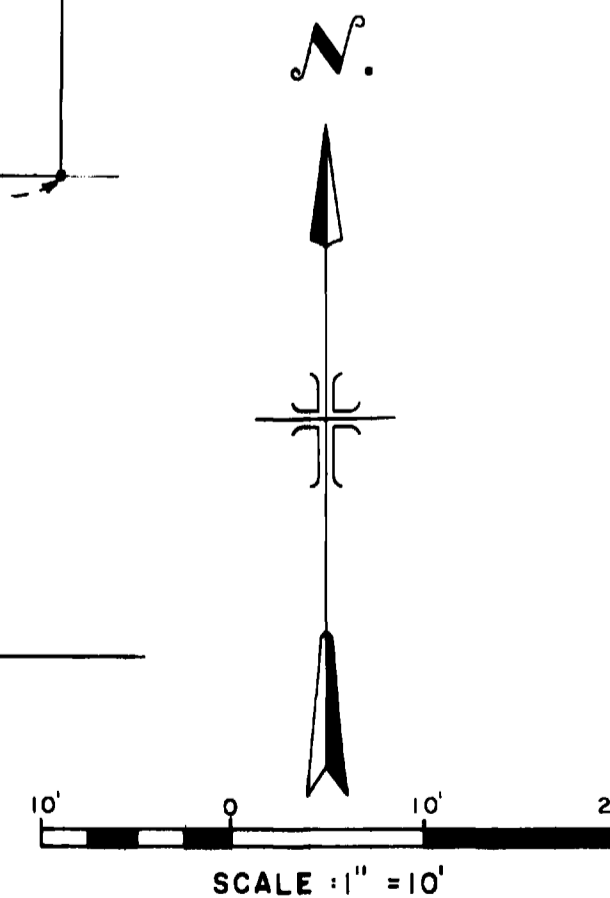


LEGEND

o # 5 REBAR FOUND

NOTES:

GCE INDICATES GENERAL COMMON ELEMENT
LCE INDICATES LIMITED COMMON ELEMENT



WESTERN ENGINEERS, INC.
CONDOMINIUM MAP OF
CIMARRON CONDOMINIUMS
UNITS 1 & 2, BUILDING NO. 1
LOT 16 A, BLOCK 5
THE RIDGES FILING NO. 3
MESA COUNTY, COLORADO

SURVEYED R.A.M. - T.S. CHECKED J.B.P.
GRAND JUNCTION, COLO. DWG. 878-2065-1 7/10/79