

# SECOND AMENDED CONDOMINIUM MAP OF ROCK RIDGE CONDOMINIUMS MESA COUNTY, COLORADO

### OWNERS CERTIFICATE

Design Structures of Grand Junction Inc., Dan Hunter, President, and Larry Kiebold, Secretary, as owners of the herein described real property, do hereby certify that this amended map of Rock Ridge Condominiums has been prepared pursuant to the declarations of Rock Ridge Condominiums recorded June 25, 1980, Book 1263, Page 377 and the Amendment to Condominium Declaration to Rock Ridge Condominiums recorded July 10, 1980, Book 1265, Page 387 in the records of Mesa County, Colorado.

Attest:

DESIGN STRUCTURES OF GRAND JUNCTION INC.  
*Dan Hunter*      *Larry Kiebold*  
 Dan Hunter, President      Larry Kiebold, Secretary



STATE OF COLORADO )  
 COUNTY OF MESA ) ss

The foregoing instrument was acknowledged before me this 14<sup>th</sup> day of OCTOBER, A.D., 1980, by Dan Hunter, President, and Larry Kiebold, Secretary, as owners of Rock Ridge Condominiums.

Witness my hand and official seal:

My commission expires 6/6/81

*James D. Linsinger*  
 Notary Public

### CLERK AND RECORDERS CERTIFICATE

STATE OF COLORADO )  
 COUNTY OF MESA ) ss

I hereby certify that this instrument was filed in my office at 10:30 clock A. M., this 16 day of October, A.D., 1980 and is duly recorded in Plat Book No.       , Page        Rec. # 1237410 File # S-19

*Earl Sawyer*      *Bonnie Nilson*  
 Clerk and Recorder      Deputy      Fees \$ 10.00

### SURVEYOR'S CERTIFICATE

I, J. Boyd Peterson, do hereby certify that this plat was made from notes of a field survey made under my direct responsibility, supervision, and checking. Said plat represents the location of the Rock Ridge Condominiums on Lot 16A, Block 7, Replat of Block 7 and a part of Block Seventeen, The Ridges Filing No. Three as filed in the Office of the Clerk and Recorder of Mesa County. And I further certify that the Condominium map substantially depicts the location of the building, the units, the unit designation, the dimensions of the units and the building symbol. Such condominium map was prepared subsequent to substantial completion of the improvements.

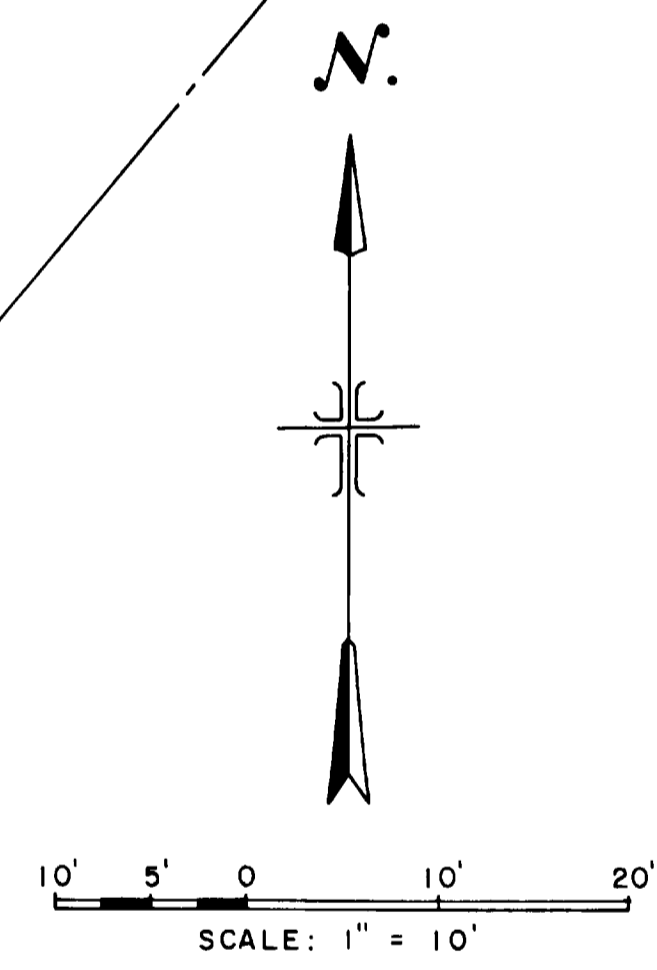
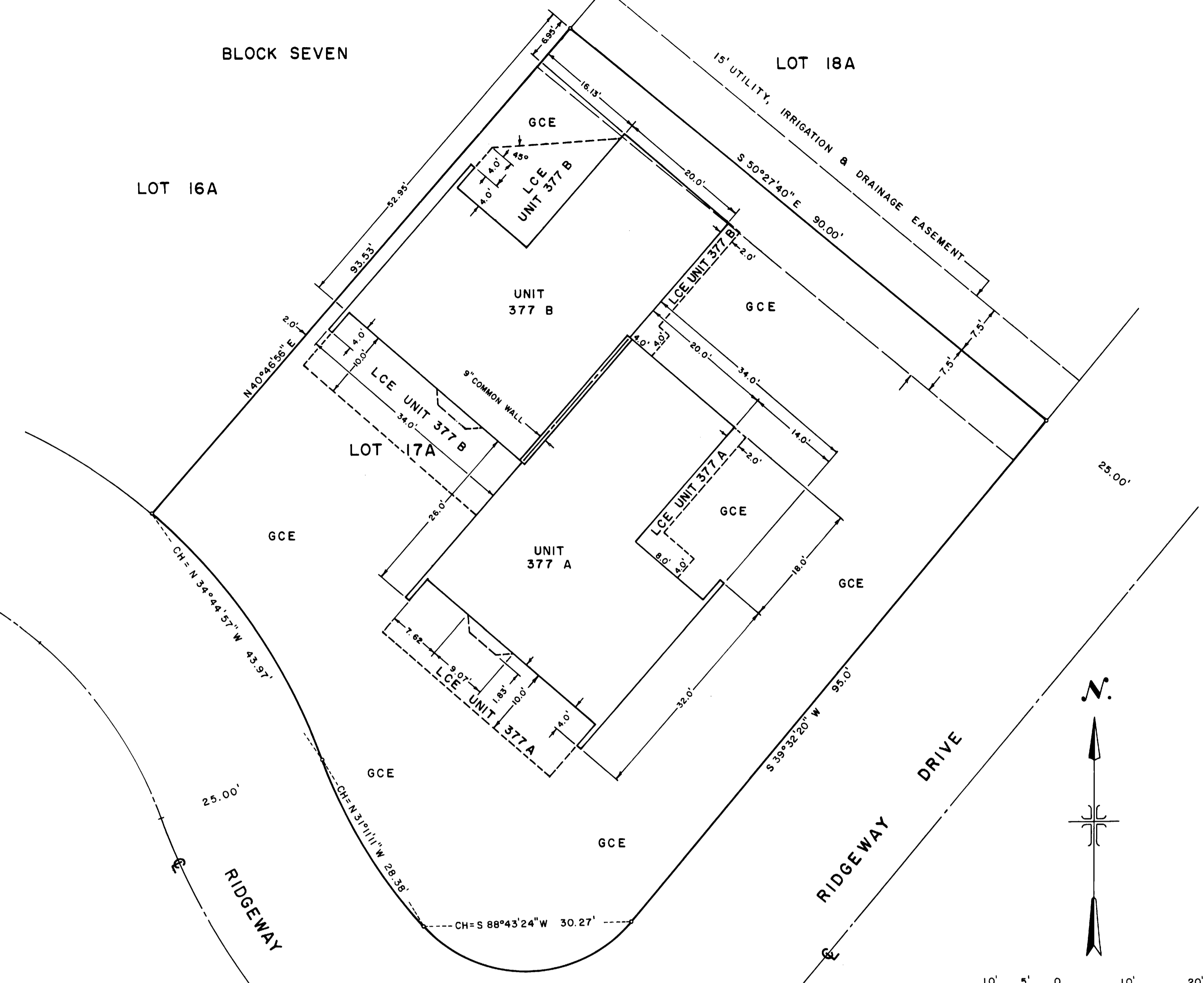
*J. Boyd Peterson*  
 J. Boyd Peterson, Colo. Reg. No. 5837



### AMENDMENT CERTIFICATE

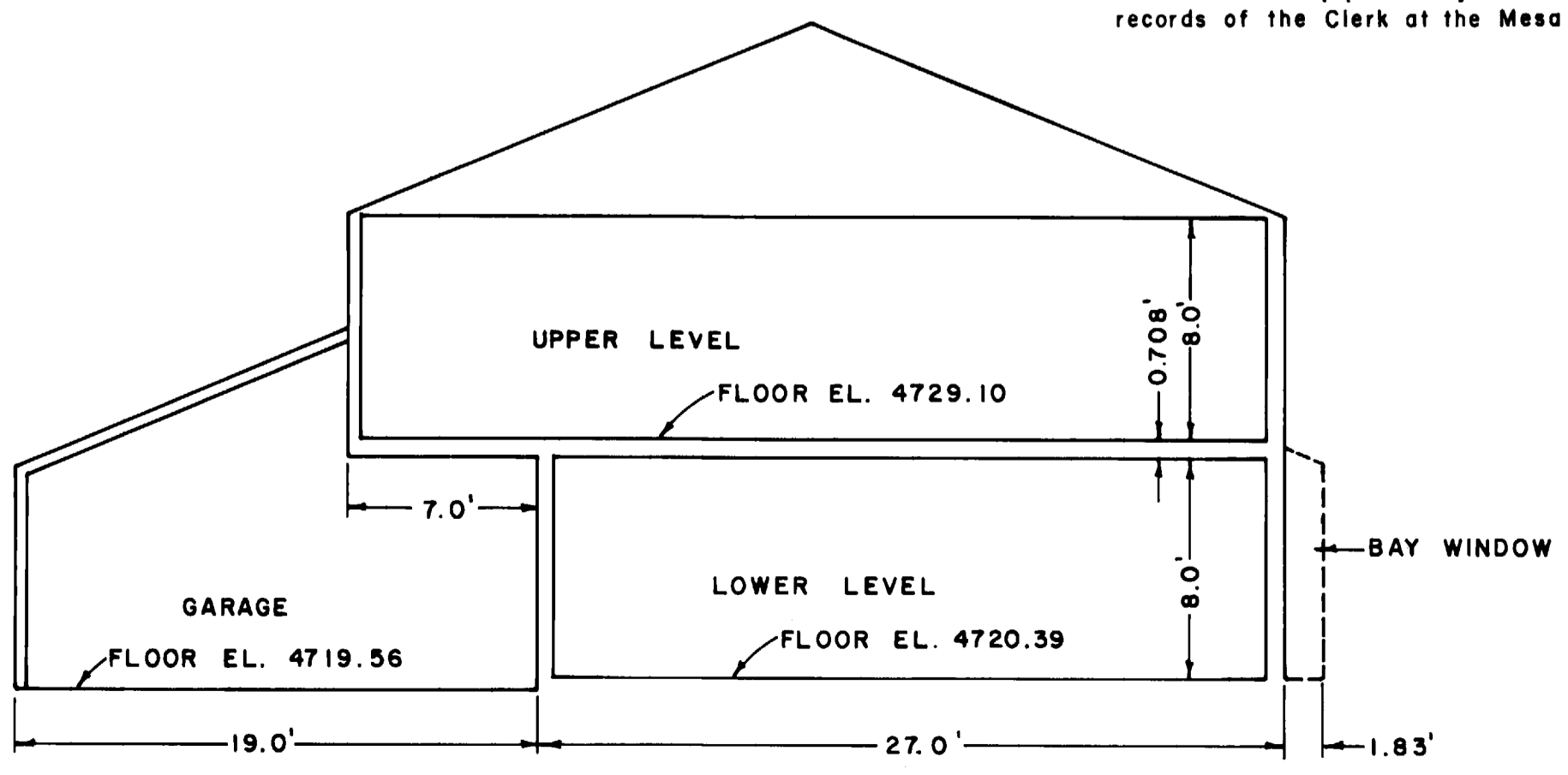
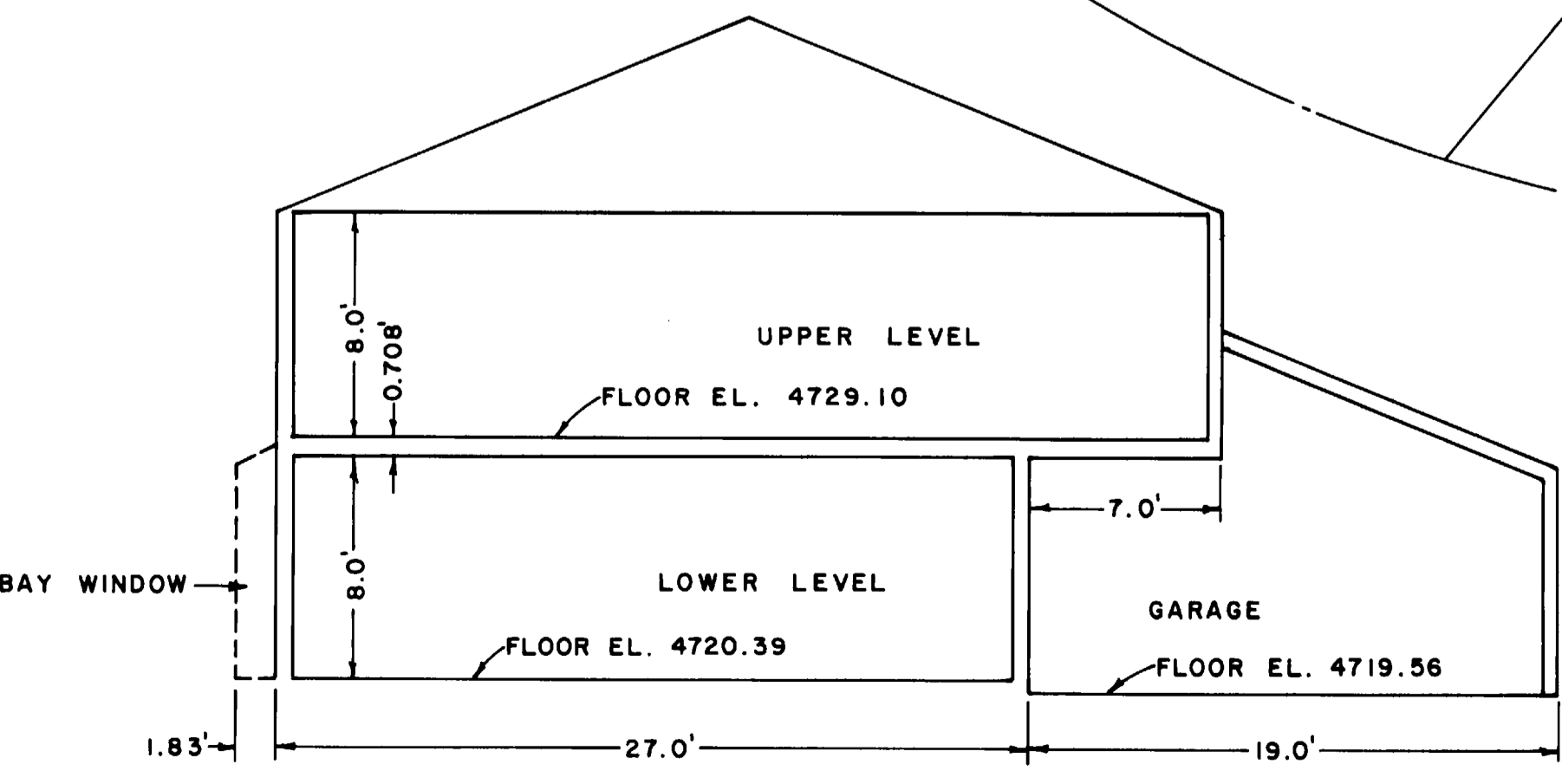
This map is an amendment to that certain condominium map relating to Lots 16A, 17A, and 18A, Block 7, Replat of Block 7 and a part of Block Seventeen, The Ridges Filing No. Three, previously recorded on June 25, 1980, at Book 12 Page 100 of the book of plats of the records of the Clerk of Mesa County Clerk and Recorders Office and the amendment to the condominium map previously recorded on 10/16/80, 1980 at Book #1237410, Page       , of the book of plats of the records of the Clerk at the Mesa County Clerk and Recorders Office.

DESIGN STRUCTURES OF GRAND JUNCTION INC.  
*Dan Hunter*      *Larry Kiebold*  
 Dan Hunter, President      Larry Kiebold, Secretary



LEGEND:  
 • # 5 REBAR FOUND

NOTES:  
 GCE INDICATES GENERAL COMMON ELEMENT  
 LCE INDICATES LIMITED COMMON ELEMENT



NOTICE: According to Colorado law you must commence any legal action based upon any defect in this survey within six years after you first discover such defect. In no event, may any action based upon any defect in this survey be commenced more than ten years from the date of the certification shown hereon.

SECOND AMENDED CONDOMINIUM MAP OF  
 ROCK RIDGE CONDOMINIUMS  
 UNITS 377 A AND 377 B  
 LOT 17A - BLOCK 7  
 REPLAT OF BLOCK 7 & PART OF BLOCK 17  
 THE RIDGES FILING NO. 3  
 MESA COUNTY, COLORADO

DESIGNED BY: R.A.M. DRAWN BY: W.W.L. CHECKED BY: J.M.F.  
 GRAND JUNCTION, COLORADO 81507 283-776 10/1/80