

# Map of Calvary Cemetery.

To whom it may concern, greeting; This is to certify that T. M. Conway, owner of the <sup>NW/4</sup> N/2, NW/4, SE/4 of Sec. 26, Twp. 15 R 1 W Ute Meridian, Mesa County Colorado, has caused the same to be surveyed, staked and platted into lots and blocks, roadways and alleys, as shown on this map for cemetery purposes and hereby dedicates the same to the public to be used as a cemetery.

T. M. Conway,

Sworn and subscribed to before me this 7<sup>th</sup> day of March 1906

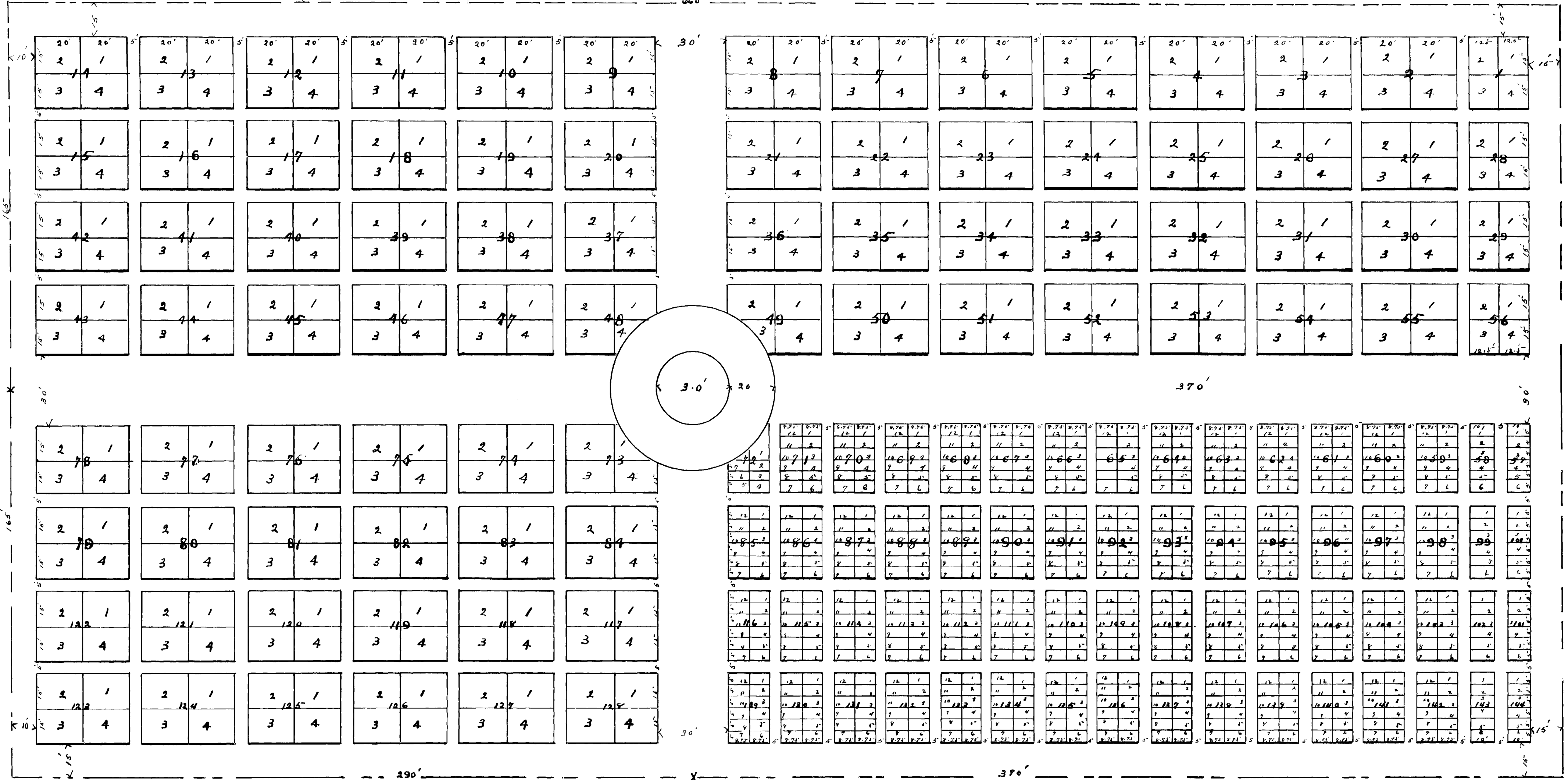
Livetha Wickertman

Notary Public.

1906  
my commission expires June 31<sup>st</sup> 1907

To whom it may concern, this is to certify that I have surveyed, staked and platted the Calvary Cemetery as shown on this map and that this map is a correct representation of the same.  
G. H. Kern, Surveyor  
Grand Junction, Colo.

scale 1" = 30'



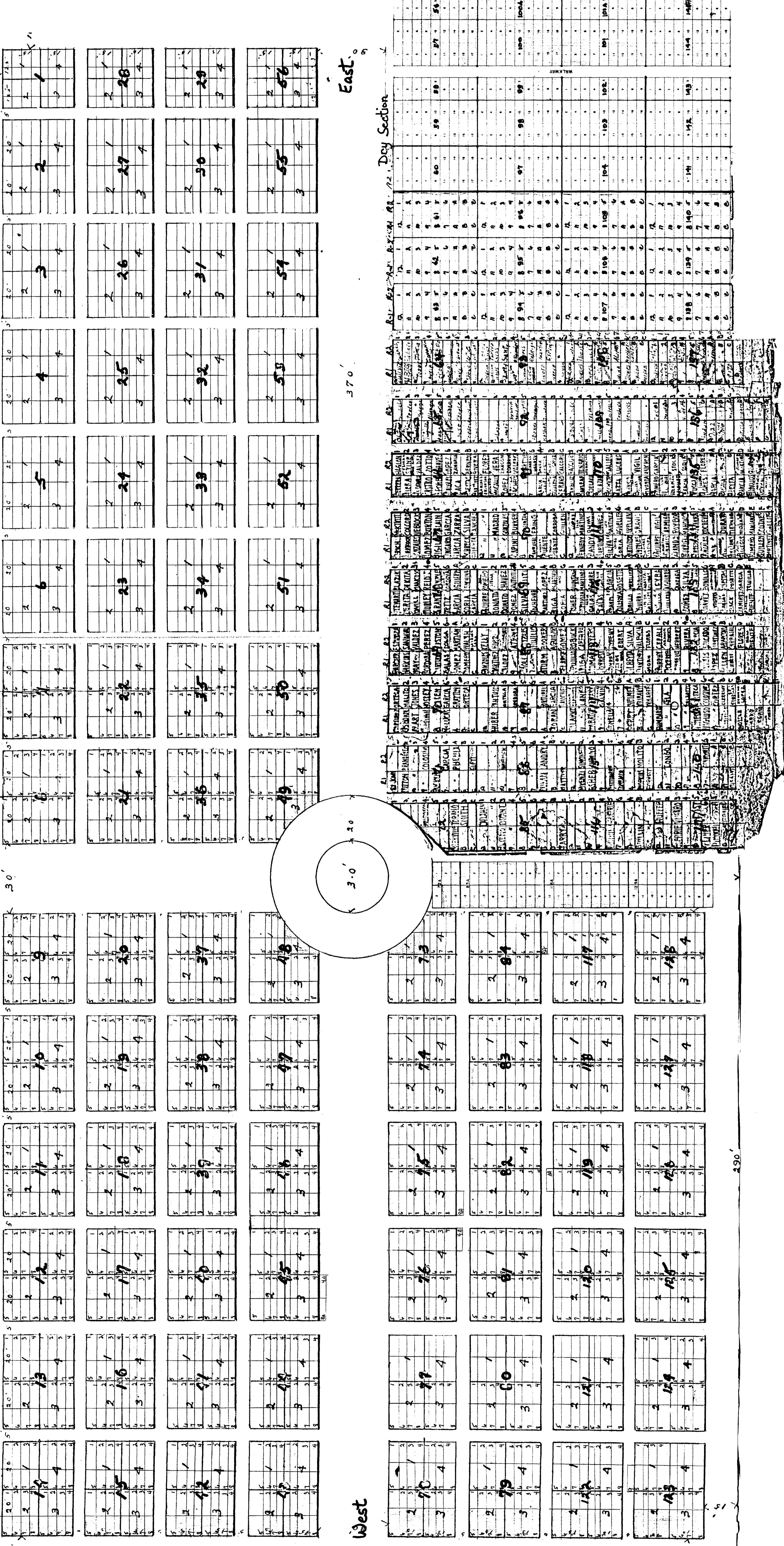
# CALVARY CEMETERY

North

East

Dry Section

South



West