

MUNICIPAL CEMETERY (CREMATION GARDEN)

SITUATE IN THE NW 1/4 NW 1/4
SECTION 26, TOWNSHIP 1 SOUTH, RANGE 1 WEST, UTE MERIDIAN
CITY OF GRAND JUNCTION, COUNTY OF MESA, STATE OF COLORADO

KNOW ALL MEN BY THESE PRESENTS:

That the City of Grand Junction, a Colorado home rule municipality, is the owner of that certain parcel of land situated in the Northwest 1/4 of the Northwest 1/4 of Section 26, Township 1 South, Range 1 West of the Ute Meridian, City of Grand Junction, County of Mesa, State of Colorado, being more particularly described as follows:

Commencing at the Southeast corner of the NW 1/4 NW 1/4 of said Section 26, whence the Northeast corner of said NW 1/4 NW 1/4 bears N 00°00'00" E a distance of 1332.91 feet, with all bearings contained herein being relative thereto; thence N 00°00'00" E along the east line of said NW 1/4 NW 1/4 a distance of 108.00 feet to a point; thence leaving said east line N 90°00'00" W a distance of 130.00 feet to the southeast corner of Block 5, Municipal Cemetery; thence N 00°00'00" E along the east line of said Block 5, Municipal Cemetery a distance of 135.32 feet to the southwest corner of OHR Shalom (Light of Peace) Cemetery; thence N 00°00'00" E along the west line of said OHR Shalom (Light of Peace) Cemetery a distance of 100.68 feet to the True Point of Beginning of the parcel described herein; thence N 90°00'00" W along a north boundary line of said Block 5, Municipal Cemetery a distance of 134.00 feet to a point on an east boundary line of said Block 5, Municipal Cemetery; thence N 00°00'00" E along an east line of said Block 5, Municipal Cemetery a distance of 98.00 feet to a northeast corner of said Block 5, Municipal Cemetery; thence N 00°00'00" E a distance of 10.00 feet to a point; thence N 90°00'00" E a distance of 134.00 feet to a point; thence S 00°00'00" W a distance of 8.68 feet to the northwest corner of said OHR Shalom (Light of Peace) Cemetery; thence S 00°00'00" W along the west line of said OHR Shalom (Light of Peace) Cemetery a distance of 99.32 feet to the point of beginning.

That the said owner has caused said real property to be laid out and platted as Municipal Cemetery (Cremation Garden) of the City of Grand Junction, Mesa County, Colorado.

IN WITNESS WHEREOF, the said City of Grand Junction, Colorado, has caused its officers names to be hereunto subscribed this 12th day of January, 1999.

Janet Terry
PRESIDENT OF COUNCIL

Stephanie Nye
CITY CLERK

STATE OF COLORADO)
) ss

STATE OF COLORADO)
) ss

COUNTY OF MESA)
The foregoing instrument was acknowledged before me this 12th day of January, A.D. 1999, by Janet Terry as President of Council of the City of Grand Junction.

COUNTY OF MESA)
The foregoing instrument was acknowledged before me this 12th day of January, A.D. 1999, by Stephanie Nye as City Clerk of the City of Grand Junction.

My commission expires: June 13, 1999

My commission expires: June 13, 1999

WITNESS MY HAND AND OFFICIAL SEAL.

WITNESS MY HAND AND OFFICIAL SEAL.

Theresa A. Marting
Notary Public

Theresa A. Marting
Notary Public

CLERK AND RECORDER'S CERTIFICATE

STATE OF COLORADO)
COUNTY OF MESA) ss
I hereby certify that this instrument was filed in my office at 9:19 o'clock A.M. this 14th day of January, A.D. 1999, and is duly recorded as Reception Number in Plat Book 16, Page 71 through 72. 1927941 Drawn #FF3
Monika Jedd Clerk and Recorder
Shirley Howard Deputy
20⁰⁰/₁₀₀ Fees

SURVEYOR'S CERTIFICATE

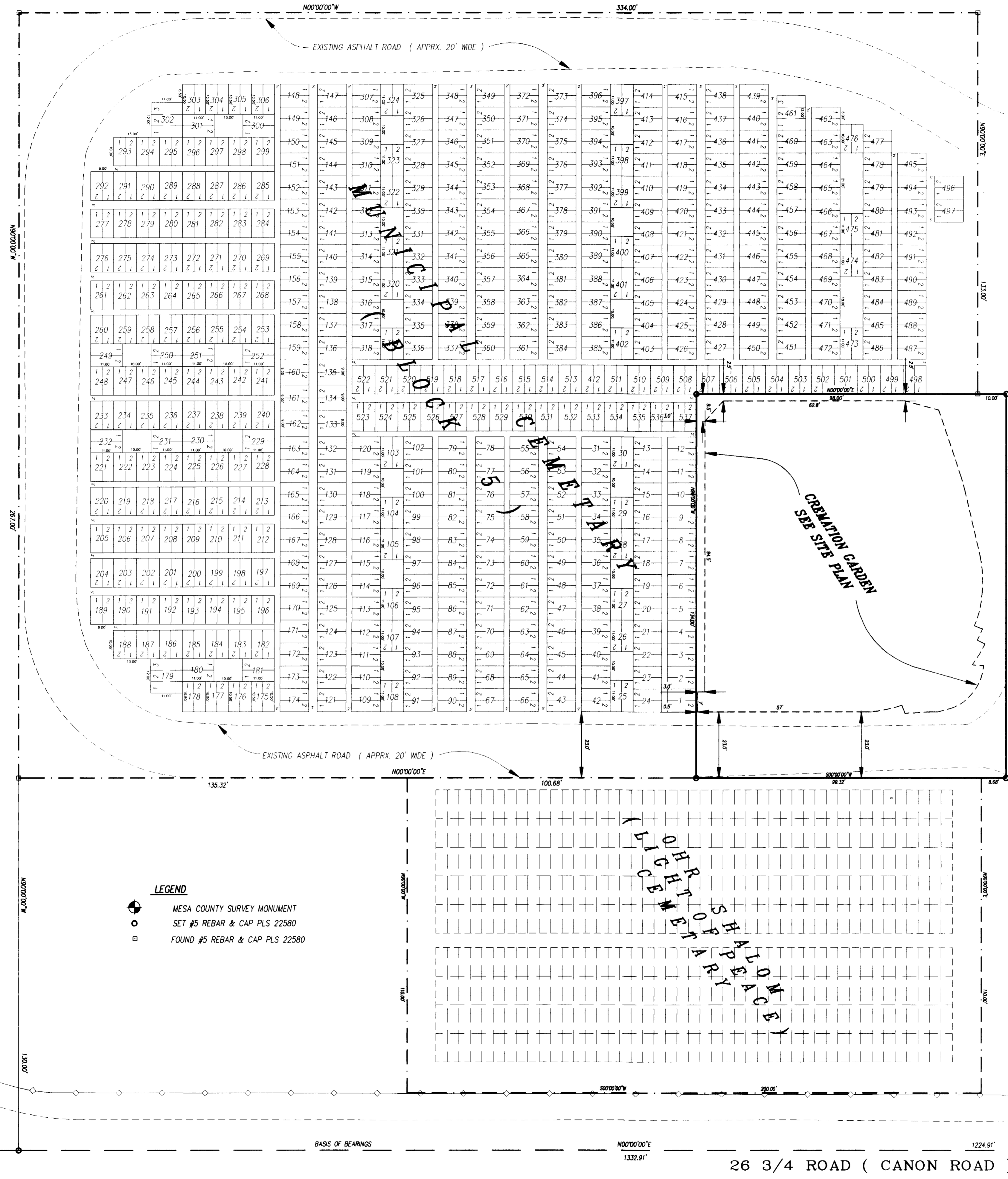
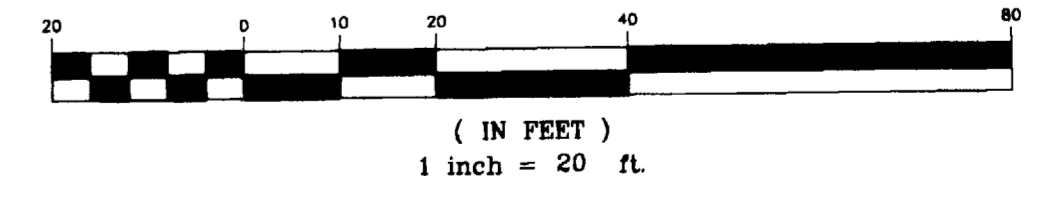
I, Steve R. Pace, do hereby certify that the accompanying plat of Municipal Cemetery (Cremation Garden), a subdivision of a part of the City of Grand Junction, County of Mesa, has been prepared under my direct supervision and according to the true and correct field survey of the same.

Steve R. Pace
Steve R. Pace
Registered Professional Land Surveyor
P.L.S. No. 22580
9-02-98
Date

NOTES:

1) BEARINGS ARE BASED ON A BEARING OF N 00°00'00" E, 1332.91' BETWEEN FOUND MONUMENTS AT THE SE CORNER OF THE NW 1/4 NW 1/4 AND THE NE CORNER OF SAID NW 1/4 NW 1/4, SECTION 26, T1S, R1W OF THE UTE MERIDIAN.

GRAPHIC SCALE



B 3/4 ROAD

26 3/4 ROAD (CANON ROAD)

REVISION	DESCRIPTION	DATE	DRAWN BY	DATE
1			SRP	11-24-97
2				
3				
4				
5				

CHECKED BY	DATE

DEPARTMENT OF PUBLIC WORKS AND UTILITIES
ENGINEERING DIVISION
CITY OF GRAND JUNCTION, COLORADO

MUNICIPAL CEMETERY
CREMATION GARDEN

SHEET NO.	1
OF	1
FILE NO.	CREM3.DWG

