

# MUNICIPAL CEMETERY

( BLOCK 5 )

SITUATE IN THE NW 1/4 NW 1/4  
SECTION 26, TOWNSHIP 1 SOUTH, RANGE 1 WEST, UTE MERIDIAN  
CITY OF GRAND JUNCTION, COUNTY OF MESA, STATE OF COLORADO

KNOW ALL MEN BY THESE PRESENTS.

That the City of Grand Junction a Colorado home rule municipality is the owner of that certain parcel of land situated in the Northwest 1/4 of the Northwest 1/4 of Section 26, Township 1 South Range 1 West of the Ute Meridian, City of Grand Junction County of Mesa, State of Colorado, being more particularly described as follows

Commencing at the Southeast corner of the NW 1/4 NW 1/4 of said Section 26, whence the Northeast corner of said NW 1/4 NW 1/4 bears N 00°00'00" E a distance of 1332.91 feet, with all bearings contained herein being relative thereto thence N 00°00'00" E along the east line of said NW 1/4 NW 1/4 a distance of 108.00 feet to a point, thence leaving said east line N 90°00'00" W a distance of 130.00 feet to the True Point of Beginning of the parcel described herein, thence N 90°00'00" W a distance of 267.00 feet thence N 00°00'00" W a distance of 334.00 feet thence N 90°00'00" E a distance of 133.00 feet, thence S 00°00'00" W a distance of 98.00 feet, thence N 90°00'00" E a distance of 134.00 feet to a point on the west line of OHR SHALOM (Light of Peace) CEMETERY as found recorded in Plat Book 14 at Page 111 of the records of the Mesa County Clerk and Recorder thence S 00°00'00" W along the west line of said OHR SHALOM CEMETERY a distance of 100.68 feet to the southwest corner of said OHR SHALOM CEMETERY, thence S 00°00'00" W a distance of 135.32 feet to the point of beginning

That the said owner has caused said real property to be laid out and platted as Municipal Cemetery (Block 5) of the City of Grand Junction Mesa County Colorado

IN WITNESS WHEREOF the said City of Grand Junction Colorado, has caused its officers names to be hereunto subscribed this 22<sup>nd</sup> day of January, 1998

*Janet Terry*  
PRESIDENT OF COUNCIL

*Stephanie Nye*  
CITY CLERK

STATE OF COLORADO )  
COUNTY OF MESA ) ss  
The foregoing instrument was acknowledged before me this 12<sup>th</sup> day of January A.D. 1998 By Janet Terry as President of Council of the City of Grand Junction

STATE OF COLORADO )  
COUNTY OF MESA ) ss  
The foregoing instrument was acknowledged before me this 12<sup>th</sup> day of January A.D. 1998 By Stephanie Nye as City Clerk of the City of Grand Junction

My commission expires June 13, 1999

My commission expires June 13, 1999

WITNESS MY HAND AND OFFICIAL SEAL

WITNESS MY HAND AND OFFICIAL SEAL

*Hussa J. Martiny*  
Notary Public

*Hussa J. Martiny*  
Notary Public

### CLERK AND RECORDER'S CERTIFICATE

STATE OF COLORADO )  
COUNTY OF MESA ) ss  
I hereby certify that this instrument was filed in my office at 9:19 o'clock A.M. this 14<sup>th</sup> day of January A.D. 1998 and is duly recorded as Reception Number 192794-D Drawer FF2 in Plat Book 16 Page 70 through

*Monika Todd* Clerk and Recorder  
*Shirley Howard* Deputy  
10<sup>00</sup> Fees  
SC 9<sup>00</sup>

### SURVEYOR'S CERTIFICATE

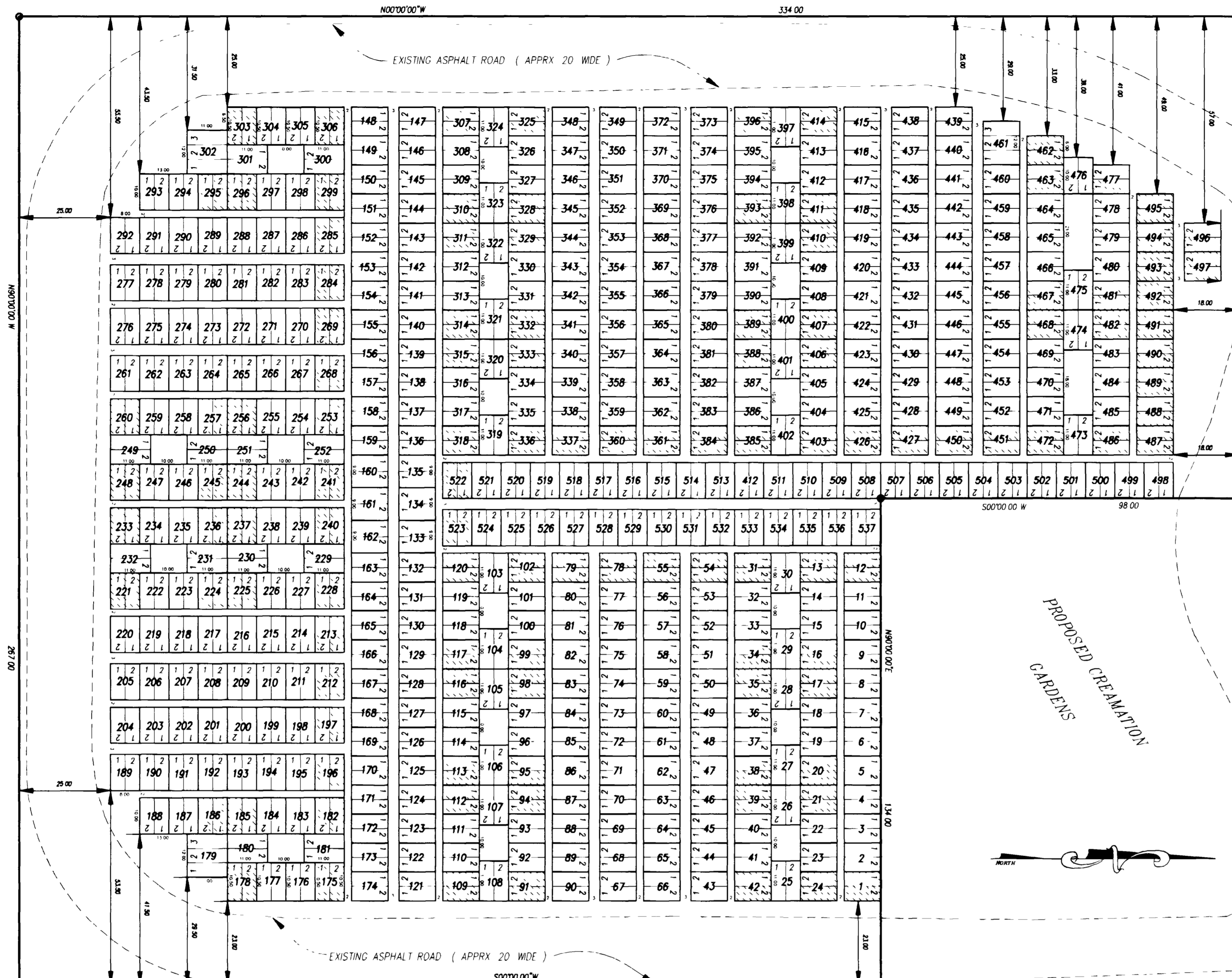
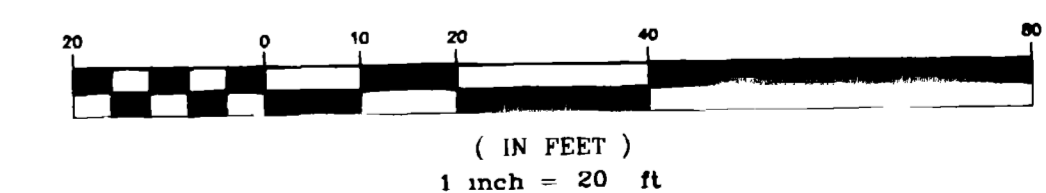
I Steve R Pace do hereby certify that the accompanying plat of Municipal Cemetery (Block 5) a subdivision of a part of the City of Grand Junction County of Mesa has been prepared under my direct supervision and accompanied by a field survey of the same

*Steve R Pace*  
Steve R Pace  
Registered Professional Surveyor  
P.L.S. No. 22580  
01-09-98  
Date

### NOTES:

- 1) BEARINGS ARE BASED ON A BEARING OF N 00°00'00" E 1332.91 BETWEEN FOUND MONUMENTS AT THE SE CORNER OF THE NW 1/4 NW 1/4 AND THE NE CORNER OF SAID NW 1/4 NW 1/4 SECTION 26 T1S R1W OF THE UTE MERIDIAN
- 2) ALL GRAVES ARE 4 x 10 UNLESS OTHERWISE NOTED

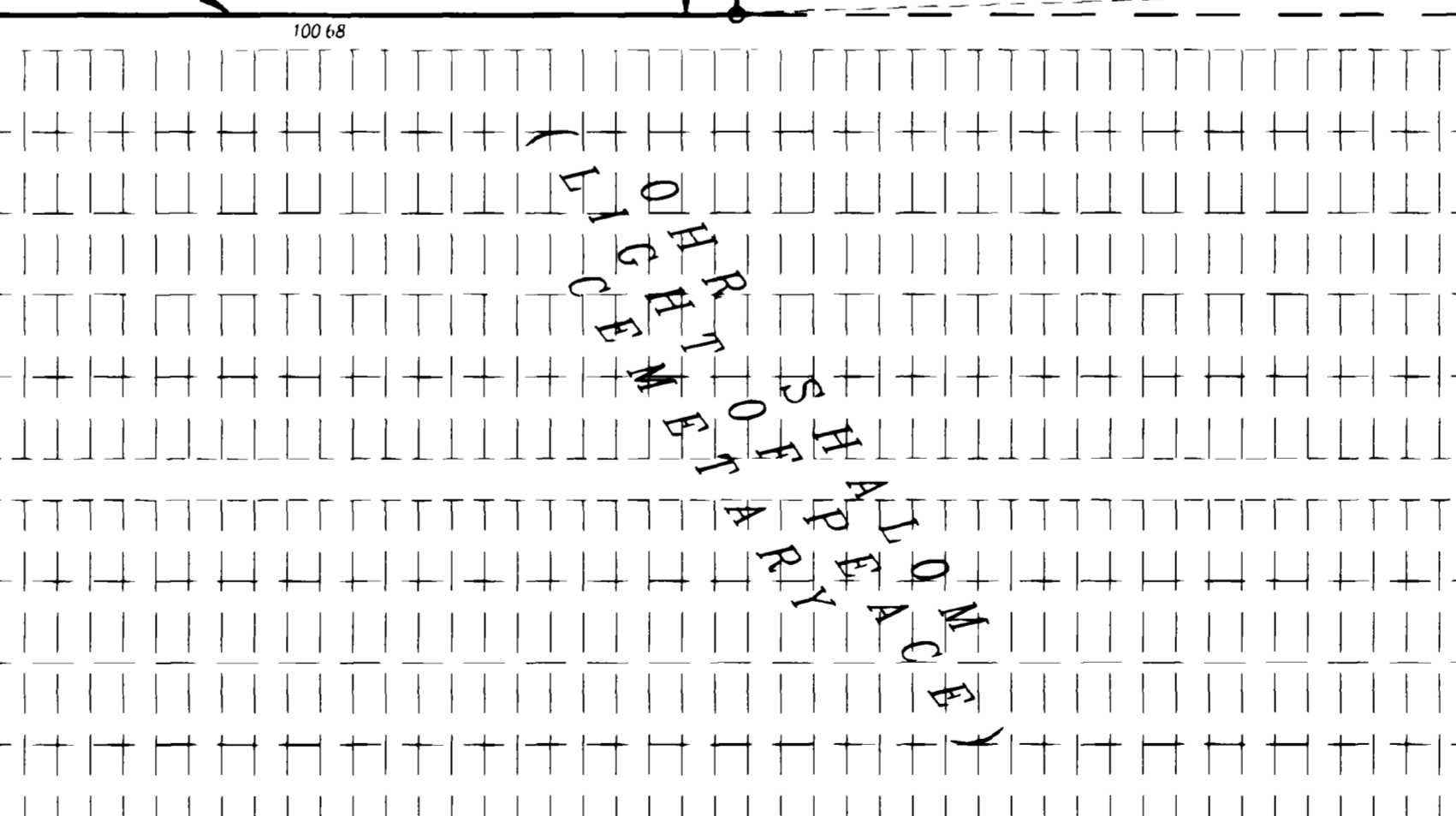
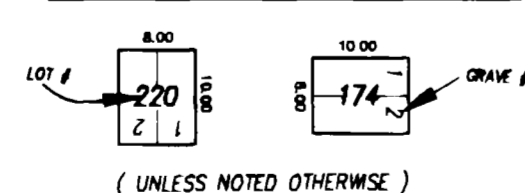
### GRAPHIC SCALE



### LEGEND

- MESA COUNTY SURVEY MONUMENT
- SET #5 REBAR & CAP PLS 22580
- SET 4" CONC MONUMENT
- INDICATES GRAVE LOTS WITH FLUSH MEMORIALS
- ALL OTHERS WILL HAVE UPRIGHT MEMORIALS

### TYPICAL 2-GRAVE LOT



B 3/4 ROAD

26 3/4 ROAD ( CANON ROAD )

REVISION	DESCRIPTION	DATE
REVISION		
REVISION		
REVISION		

DRAWN BY	SRP	DATE	11-24-97
CHECKED BY		DATE	
APPROVED BY		DATE	
FIELD BOOK NO.		PAGE	

SCALE  
1" = 20'

DEPARTMENT OF PUBLIC WORKS AND UTILITIES  
ENGINEERING DIVISION  
CITY OF GRAND JUNCTION, COLORADO

MUNICIPAL CEMETERY  
( BLOCK 5 )

SHEET NO.	1
OF	1
FILE NO.	MUNCEN DWG

01178201.tif