

FOURTH AMENDED  
 CONDOMINIUM MAP OF  
**ROCK RIDGE CONDOMINIUMS**  
 MESA COUNTY, COLORADO

OWNERS CERTIFICATE

Design Structures of Grand Junction Inc., Dan Hunter, President, and Larry Klebold, Secretary, as owners of the herein described real property, do hereby certify that this amended map of Rock Ridge Condominiums has been prepared pursuant to the declarations of Rock Ridge Condominiums recorded June 25, 1980, Book 1263, Page 377 and the Amendment to Condominium Declaration to Rock Ridge Condominiums recorded July 10, 1980, Book 1265, Page 387 in the records of Mesa County, Colorado.

Attest:  
 DESIGN STRUCTURES OF GRAND JUNCTION, INC., A COLORADO CORPORATION  
 Dan Hunter, President  
 Larry Klebold, Secretary

STATE OF COLORADO )  
 COUNTY OF MESA ) ss

The foregoing instrument was acknowledged before me this 18<sup>th</sup> day of May, A.D. 1981, by Dan Hunter, President, and Larry Klebold, Secretary, officers of Design Structures of Grand Junction, Inc., a Colorado Corporation.

Witness my hand and official seal.

My commission expires 5/7/85

James D. Livingston  
 Notary Public

CLERK AND RECORDERS CERTIFICATE

STATE OF COLORADO )  
 COUNTY OF MESA ) ss # 1258667

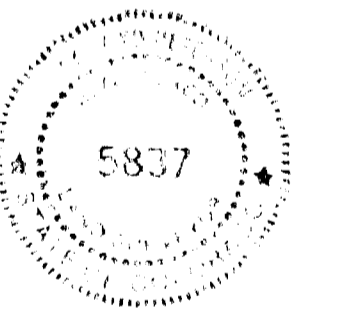
I hereby certify that this instrument was filed in my office at 2:32 O'clock P.M. this 1<sup>st</sup> day of June, A.D. 1981 and is duly recorded in Plat Book No. \_\_\_\_\_, Page \_\_\_\_\_, \$-46 - filed

Carl Sawyer  
 Clerk and Recorder  
 By Hazel M. Huskey  
 Deputy  
 Fees \$ 10.00

SURVEYOR'S CERTIFICATE

I, J. Boyd Peterson, do hereby certify that this plat was made from notes of a field survey made under my direct responsibility, supervision, and checking. Said plat represents the location of the Rock Ridge Condominiums on Lot 14 A, Block 7, Replat of Block Seven and a part of Block Seventeen, The Ridges, Filing No. Three as filed in the Office of the Clerk and Recorder of Mesa County. And I further certify that the Condominium map substantially depicts the location of the building, the units, the unit designation, the dimensions of the units and the building symbol. Such condominium map was prepared subsequent to substantial completion of the improvements.

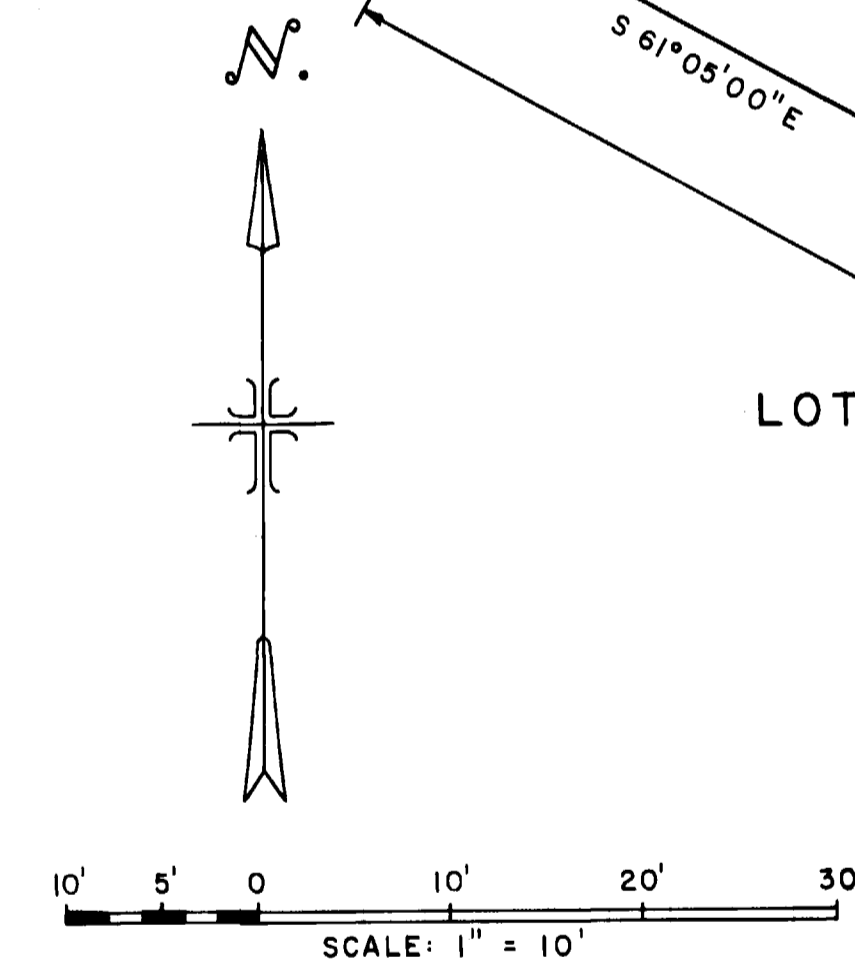
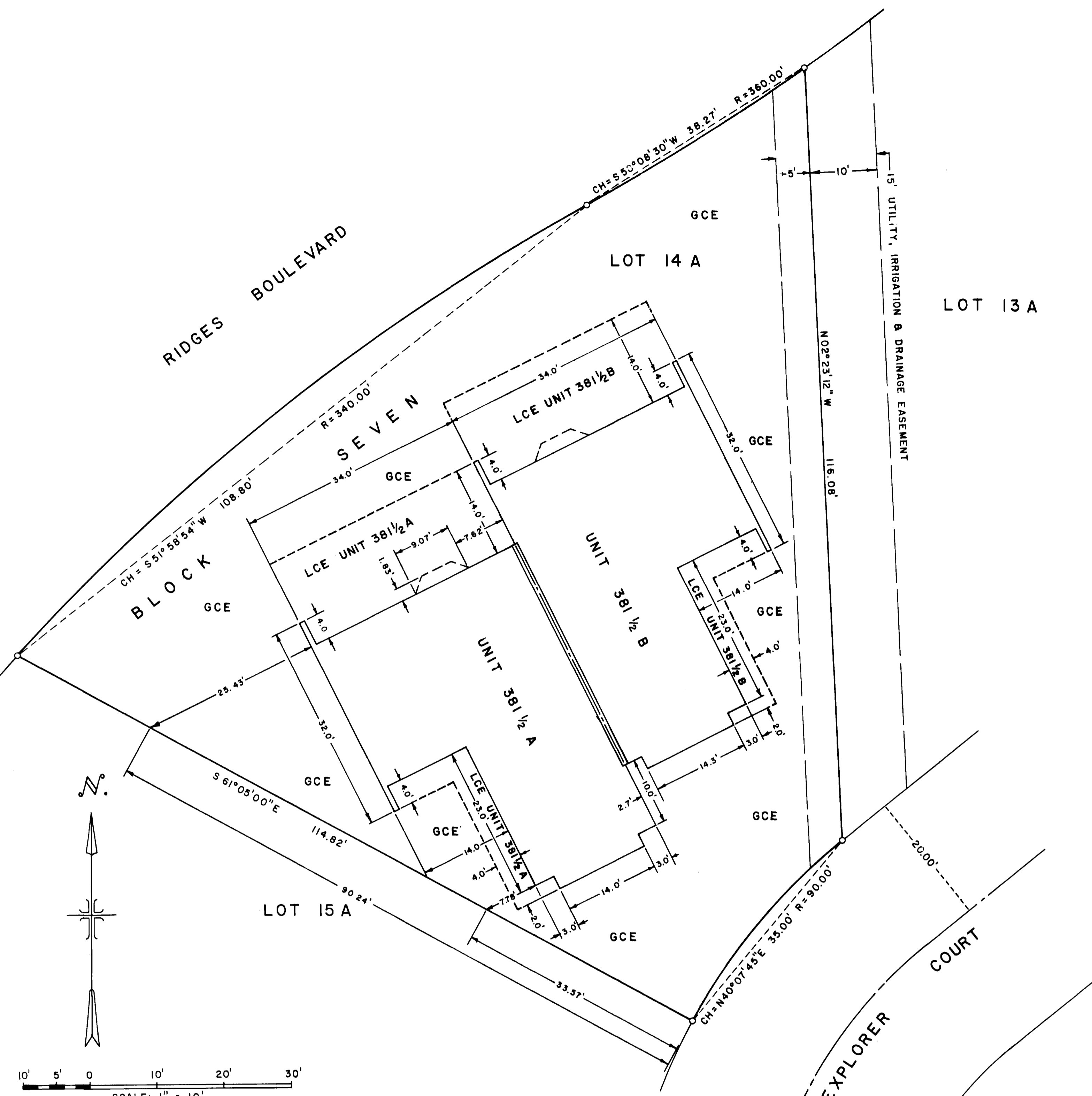
J. Boyd Peterson  
 J. Boyd Peterson, Colo. Reg. No. 5837



AMENDMENT CERTIFICATE

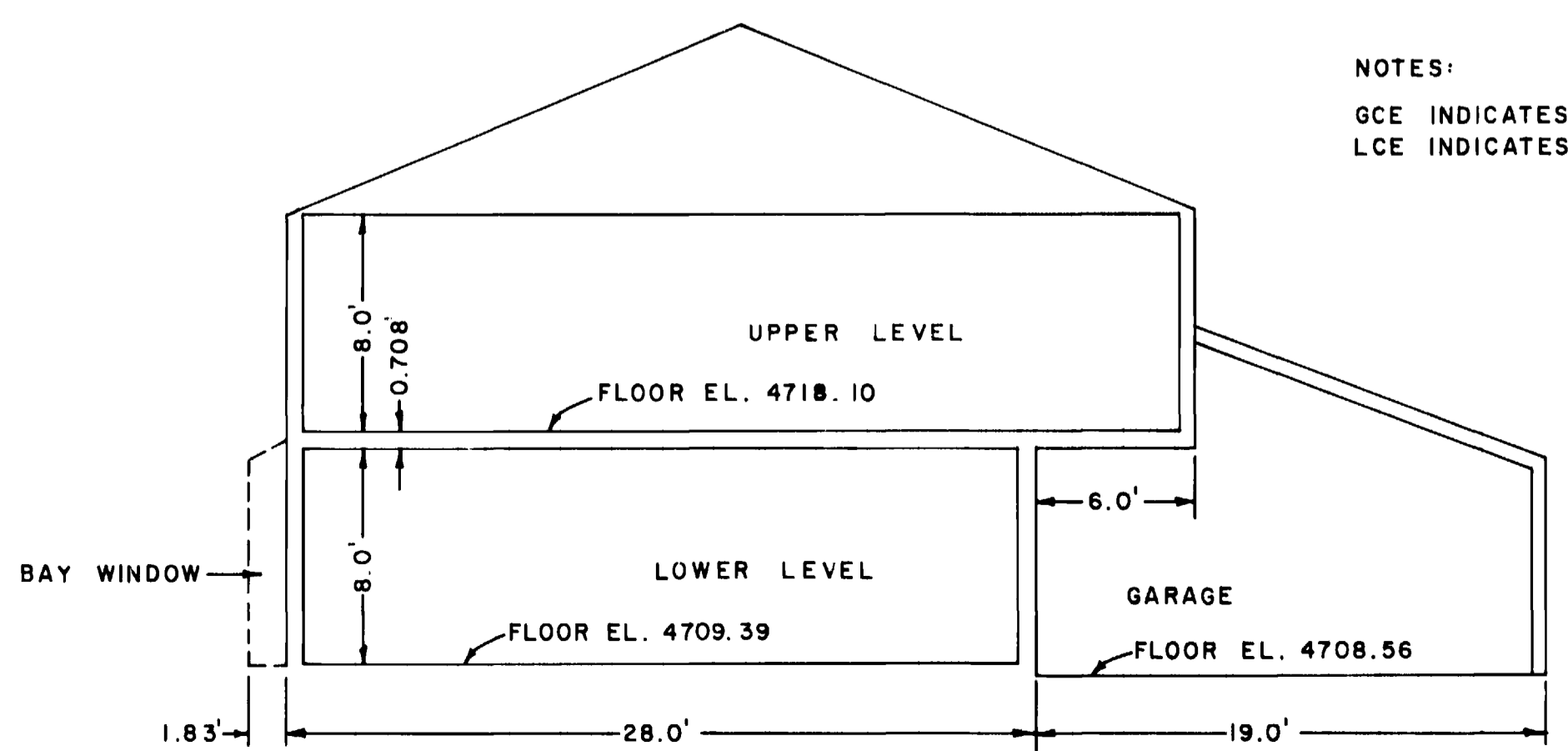
This map is an amendment to that certain condominium map relating to Lots 17A, 16A, and 15A Block 7, Replat of Block Seven and a part of Block Seventeen, The Ridges, Filing No. Three, previously recorded on \_\_\_\_\_, 1980, at Book \_\_\_\_\_, Page \_\_\_\_\_ of the book of plats of the records of the Clerk of Mesa County Clerk and Recorders Office and the amendment to the condominium map previously recorded on \_\_\_\_\_, 1980, at Book \_\_\_\_\_, Page \_\_\_\_\_, of the book of plats of the records of the Clerk at the Mesa County Clerk and Recorders Office

DESIGN STRUCTURES OF GRAND JUNCTION, INC. A COLORADO CORPORATION  
 Dan Hunter, President  
 Larry Klebold, Secretary

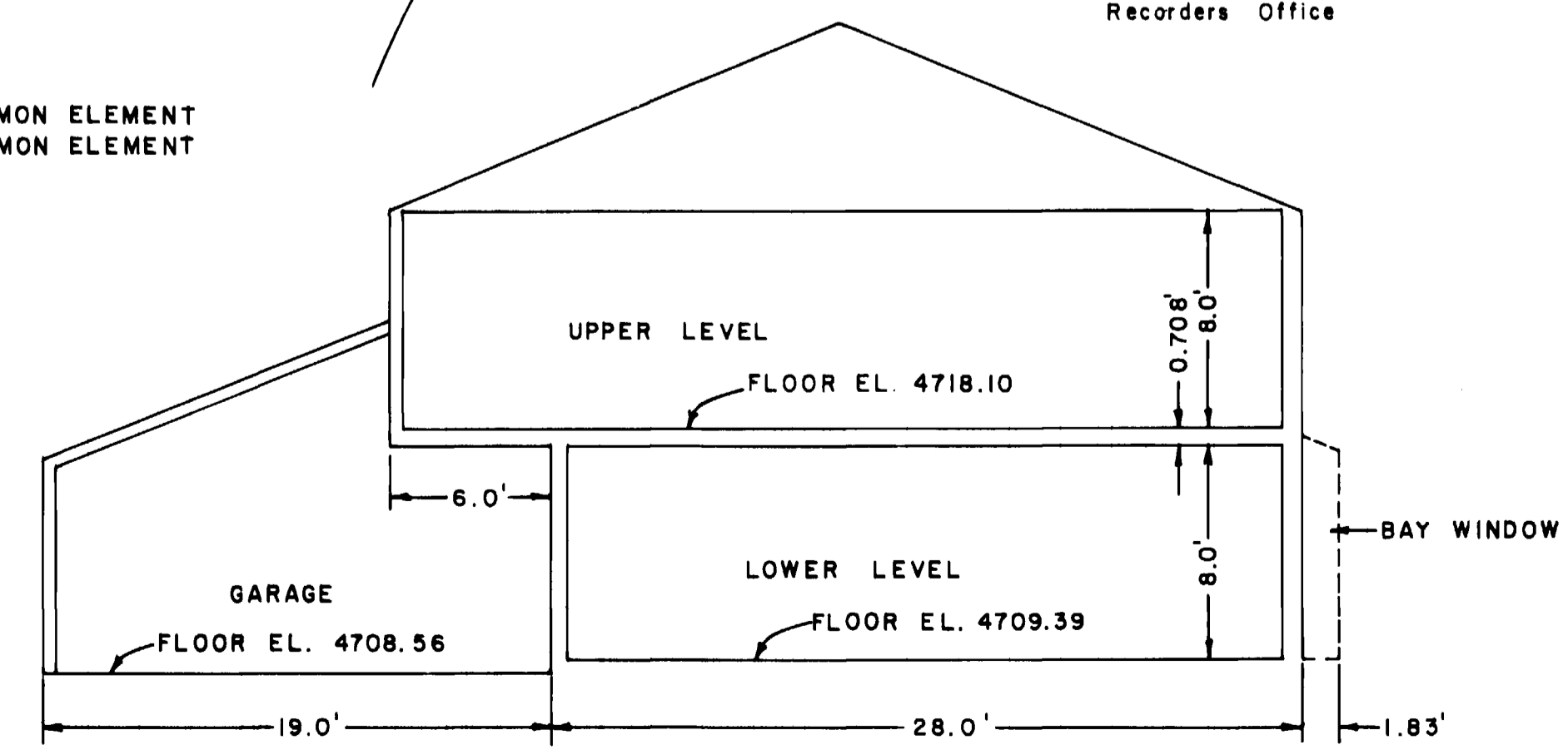


LEGEND:  
 • #5 REBAR FOUND

NOTES:  
 GCE INDICATES GENERAL COMMON ELEMENT  
 LCE INDICATES LIMITED COMMON ELEMENT



ELEVATION THRU UNIT 381 1/2 A  
 (LOOKING NORTHEAST)  
 SCALE: 1" = 6'



ELEVATION THRU UNIT 381 1/2 B  
 (LOOKING SOUTHWEST)  
 SCALE: 1" = 6'

EXHIBIT "B"

WESTERN ENGINEERS, INC.  
**FOURTH AMENDED CONDOMINIUM MAP OF  
 ROCK RIDGE CONDOMINIUMS  
 UNITS 381 1/2 A AND 381 1/2 B  
 LOT 14 A - BLOCK 7  
 REPLAT OF BLOCK 7 & PART OF BLOCK 17  
 THE RIDGES FILING NO. 3**  
 MESA COUNTY, COLORADO  
 SURVEYED: R.A.M. DRAWN: R.W.G. CHECKED: J.R.P.  
 GRAND JUNCTION, COLO. DWG. 450-907-12 12/16/80