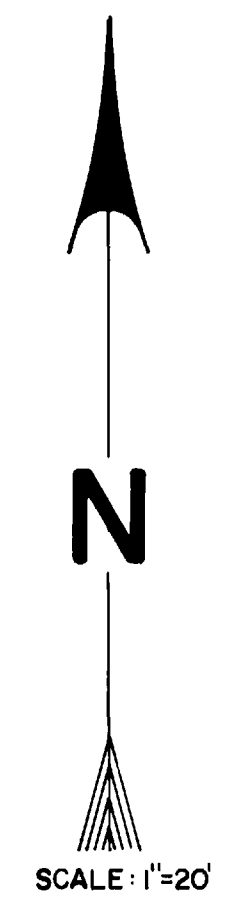
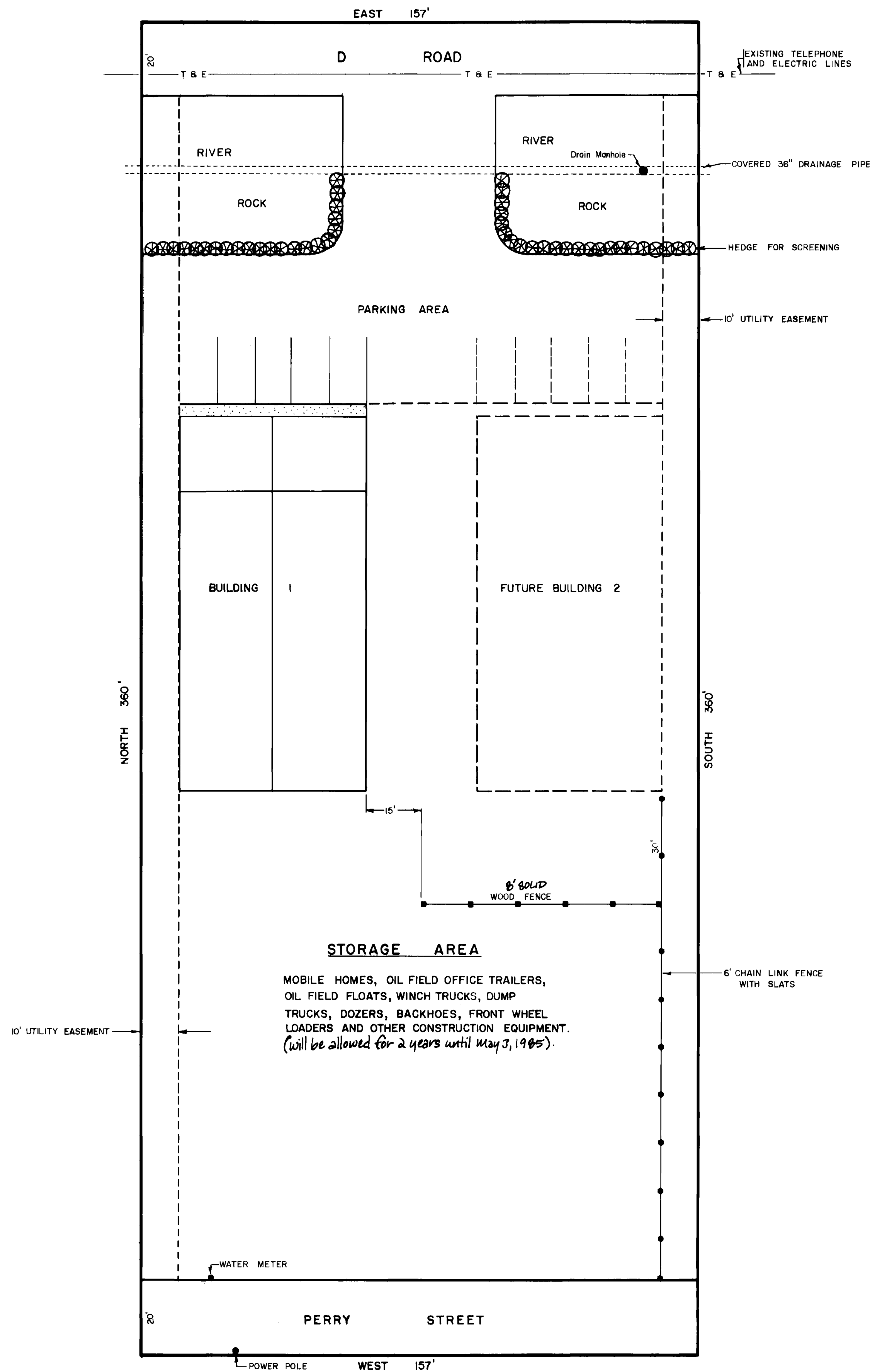


COLE'S CORNER



BOARD OF COUNTY COMMISSIONERS CERTIFICATE

APPROVED THIS 16th DAY OF August, A.D. 1983. BOARD OF COUNTY COMMISSIONERS OF THE COUNTY OF MESA, COLORADO.

BY Mariane Aldera
CHAIRMAN

CLERK AND RECORDER'S CERTIFICATE

STATE OF COLORADO)
COUNTY OF MESA) S.S. #1340762
I HEREBY CERTIFY THAT THIS INSTRUMENT WAS FILED IN MY OFFICE AT 2:26 O'CLOCK P.M., SEP 26, A.D. 1983, AND IS DULY RECORDED IN PLAT BOOK NO. ---, PAGE ---. Filed - W-15

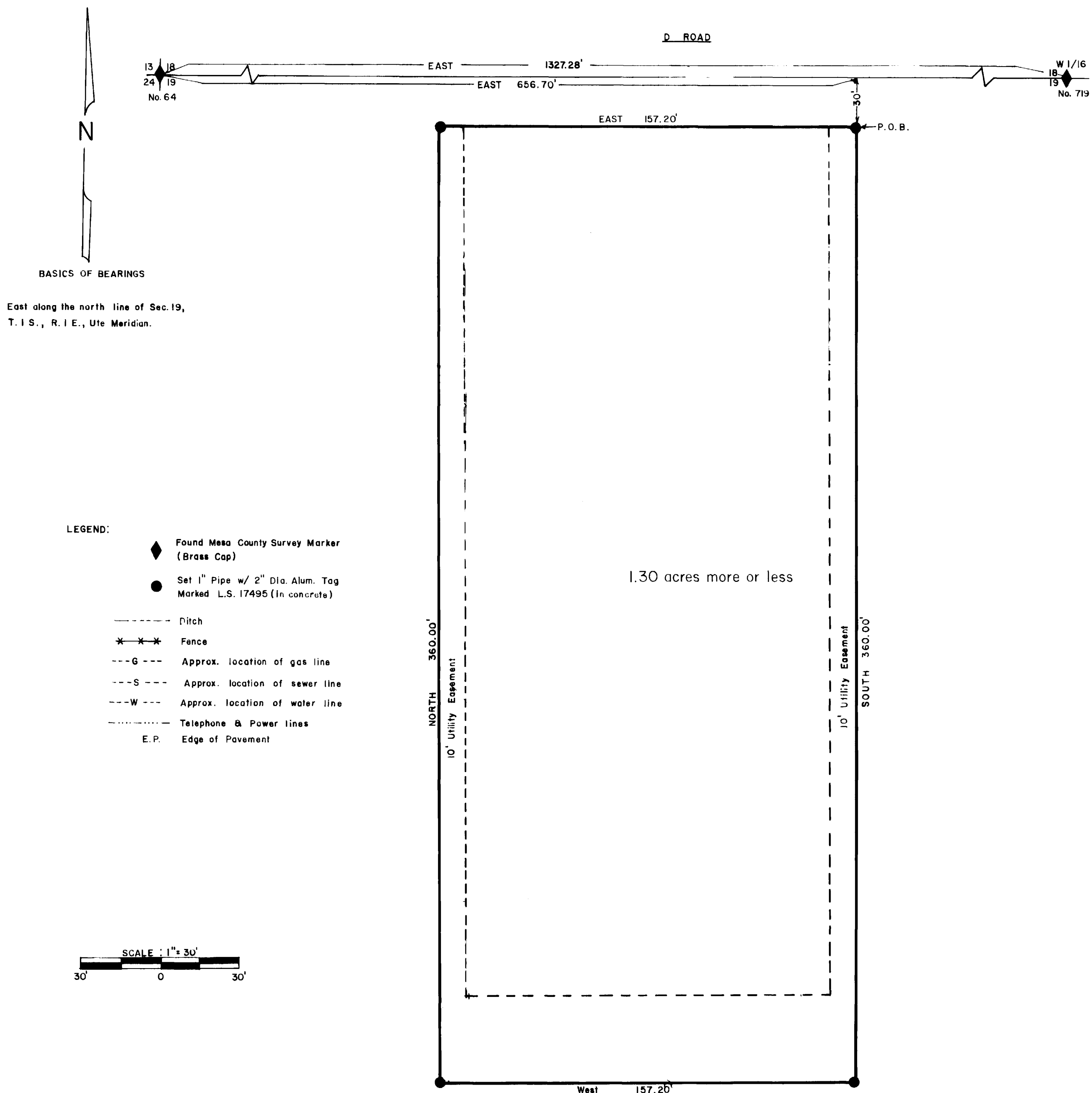
BY Carl Sawyer CLERK & RECORDER
BY Bonnie Gibson DEPUTY

APPROVED BY CE Stockton CHAIRMAN, UTILITIES COORDINATING COMMITTEE
DATE Aug 17, 1983

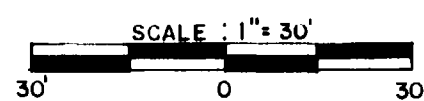
APPROVED THIS 16th DAY OF AUGUST, A.D. 1983. County Planning Commission of the County of Mesa, Colorado.

J.B. Young
Chairman

COLE'S CORNER



- LEGEND:**
- ◆ Found Mesa County Survey Marker (Brass Cop)
 - Set 1" Pipe w/ 2" Dia. Alum. Tag Marked L.S. 17495 (In concrete)
 - Ditch
 - *-*-* Fence
 - G- - - - - Approx. location of gas line
 - S- - - - - Approx. location of sewer line
 - W- - - - - Approx. location of water line
 - Telephone & Power lines
 - E.P. Edge of Pavement



DEDICATION

KNOWN ALL MEN BY THESE PRESENTS:

That the undersigned TRAILER HOME RENTALS, INCORPORATION is the owner of that real property situated in the NW1/4 NW1/4 of Section 19, Township 1 South, Range 1 East of the Ute Meridian, County of Mesa, State of Colorado, as shown on the accompanying plat, said tract being more particularly described as follows:

Beginning at a point which is 656.70 feet EAST and 30.00 feet SOUTH of the Northwest corner of Section 19, Township 1 South, Range 1 East of the Ute Meridian, running thence SOUTH, 360.00 feet; thence West 157.20 feet; thence North 360.00 feet; thence East 157.20 feet to the point of beginning. As recorded in Book 997, Page 1000, Mesa County Courthouse, Grand Junction, Colorado.

The above described tract contains 1.30 acres more or less.

That said owner has caused the real property to be laid out and surveyed as COLE'S CORNER, a subdivision of a part of Mesa County, Colorado.

That said owner does hereby dedicate and set apart all of the streets and roads as shown on the accompanying plat to the use of the public forever, and hereby dedicate to the Public Utilities those portions of said real property which are labeled as utility easements on the accompanying plat as perpetual easements for the installation and maintenance of utilities, irrigation and drainage facilities, including but not limited to electric lines, gas lines, telephone lines, together with the right to trim interfering trees and brush, with perpetual right of ingress and egress for installation and maintenance of such lines. Such easements and rights shall be utilized in a reasonable and prudent manner.

That all expense for street paving or improvements shall be furnished by the seller or purchaser, not by the County of Mesa.

IN WITNESS WHEREOF said owner has caused their names to be hereunto subscribed this 21 day of June, A.D., 1982.

Raymond C. Cole
Raymond C. Cole Pres.

Doris Marie Cole
Doris Marie Cole Sec.

STATE OF COLORADO }
COUNTY OF MESA } s.s.

The foregoing instrument was acknowledged before me this 29 day of June, A.D., 1982, by Raymond C. Cole and Doris Marie Cole.

Witness my hand and official seal.

My commission expires: 5/21/86

Linda Bradley
Notary Public



CLERK AND RECORDERS CERTIFICATE

STATE OF COLORADO }
COUNTY OF MESA } s.s. # 1294533

I hereby certify that this instrument was filed in my office at 2:01 o'clock P.M., this 15th day of June, A.D., 1982, and is duly recorded in Plat Book No. 13, Page 42.

Earl Sawyer By *Wayne M. Hunsley*
Clerk and Recorder Deputy

FEES: 10.00 Filed 26-28

COUNTY PLANNING COMMISSION CERTIFICATE

Approved this 9 day of June, A.D., 1982,
County Planning Commission of the County of Mesa, Colorado.

D. L. Sk...
Chairman

BOARD OF COUNTY COMMISSIONERS CERTIFICATE

Approved this 8 day of June, A.D., 1982,
Board of County Commissioners of the County of Mesa, Colorado.

Steve White
Chairman

UTILITIES COORDINATING COMMITTEE

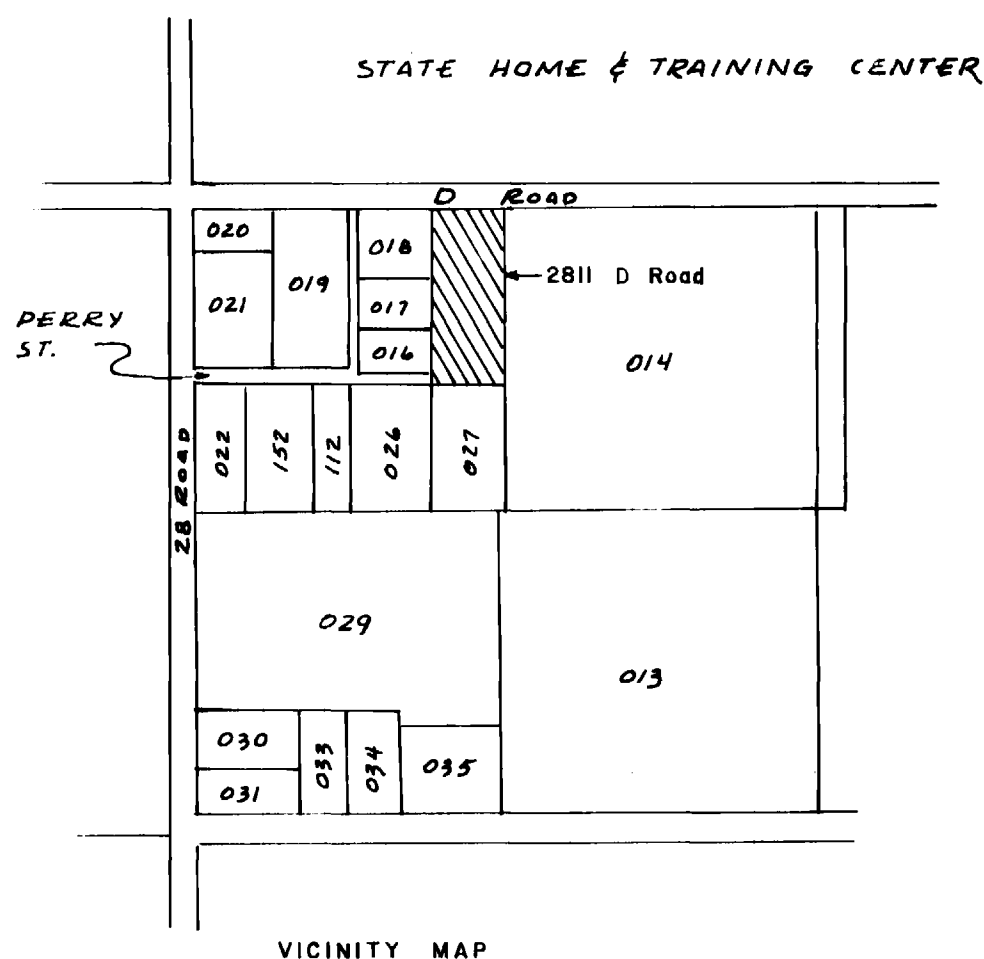
Approved this 8 day of June, A.D., 1982,
Utilities Coordinating Committee of the County of Mesa, Colorado.

Thomas L. Schubert Jr.
Chairman

SURVEYOR'S CERTIFICATE

I, Ray E. Manspeaker, do hereby certify that the accompanying plat of COLE'S CORNER, a subdivision of a part of the County of Mesa, has been prepared under my direction and accurately represents a field survey of same.

Ray E. Manspeaker
Ray E. Manspeaker
Registered Land Surveyor
Colorado Registration No. 17495



LOCKE ASSOCIATES, INC.
189 LUMLEY DR.
GRAND JUNCTION, COLO. 81503
(303) 243-9628

COLE'S CORNER
NW1/4 NW1/4, SEC. 19, T. 1 S., R. 1 E.,
UTE MERIDIAN

Job 8214	CK. F.A.B.	SHEET 1
DR. R.E.M.	DATE: 3/25/82	OF 1