

The foregoing plat of South Redlands Subdivision is accepted for filing subject to the obligation, only to maintain existing County highways shown thereon.

Feb. 12-1946

BOARD OF COUNTY COMMISSIONERS



H. GRADY PUETT
Chairman
O.C. MAYNE
Commissioner
W.F. PERKINS
Commissioner

Attest:

L.P. MORSE
Deputy County Clerk

PLAT OF
SOUTH REDLANDS SUBDIVISION
SCALE 1" = 60 FT

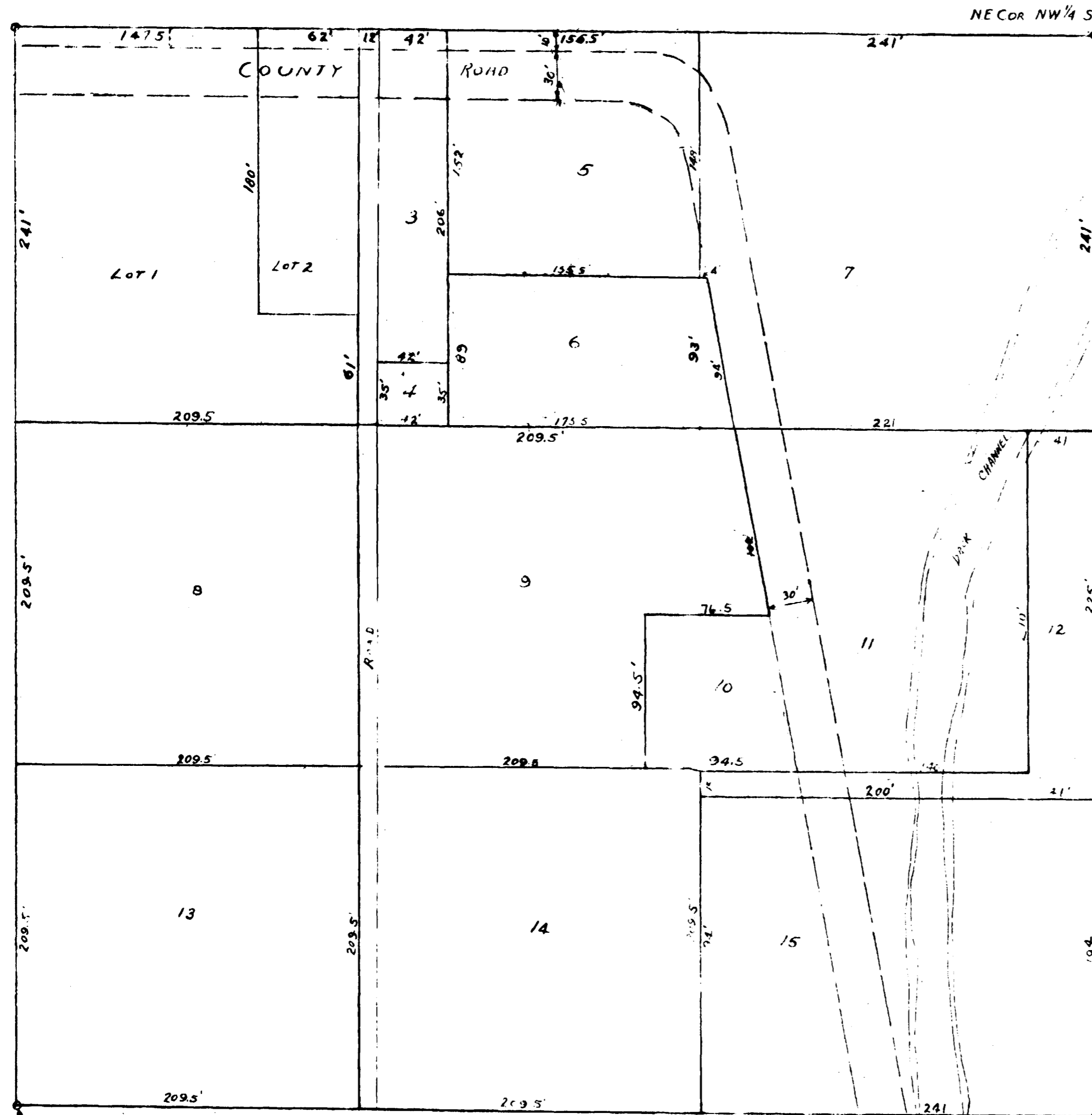


KNOW ALL MEN BY THESE PRESENTS THAT I, Austin Redd
DO HEREBY LAY OUT AND PLAT THE SOUTH REDLANDS SUB-
DIVISION, LOCATED AS FOLLOWS:

THE NE 1/4 OF THE NE 1/4 OF THE NW 1/4 OF SECTION
22, TWP 1 SOUTH, RANGE 1 WEST OF THE UTE MERIDIAN,
IN MESA COUNTY, COLORADO. ALL ROADS AND STREETS HEREON
ARE DEDICATED TO THE PUBLIC FOREVER.

WITNESS MY HAND AND SEAL THIS 12th DAY OF FEBRUARY 1946.

Austin Redd

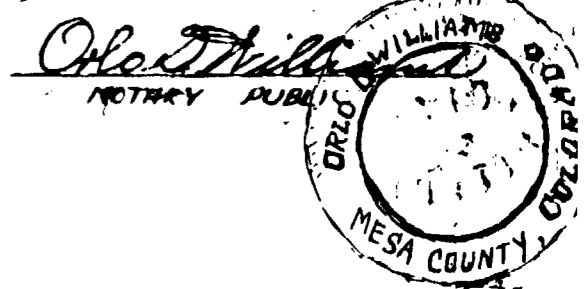


STATE OF COLORADO } SS
COUNTY OF MESA }

SWORN AND SUBSCRIBED TO BEFORE ME, A NOTARY
PUBLIC IN THE COUNTY OF MESA, STATE OF COLORADO.

February 12 1946

My Commission Expires
January 20 1948



THIS TRACT OF LAND, DESCRIBED AS THE NE 1/4 OF THE
NE 1/4 OF THE NW 1/4 OF SECTION 22, T.1S. R.1W., OF THE
UTE MERIDIAN, MESA COUNTY, COLORADO, WAS SURVEYED
UNDER MY DIRECTION ON THE 19th TO 24th OF NOVEMBER
1945.

Roy L. George
COUNTY SURVEYOR



J.K. Hollark

Dec 21-1945
Mesa County Planning Commission
Chairman

442652