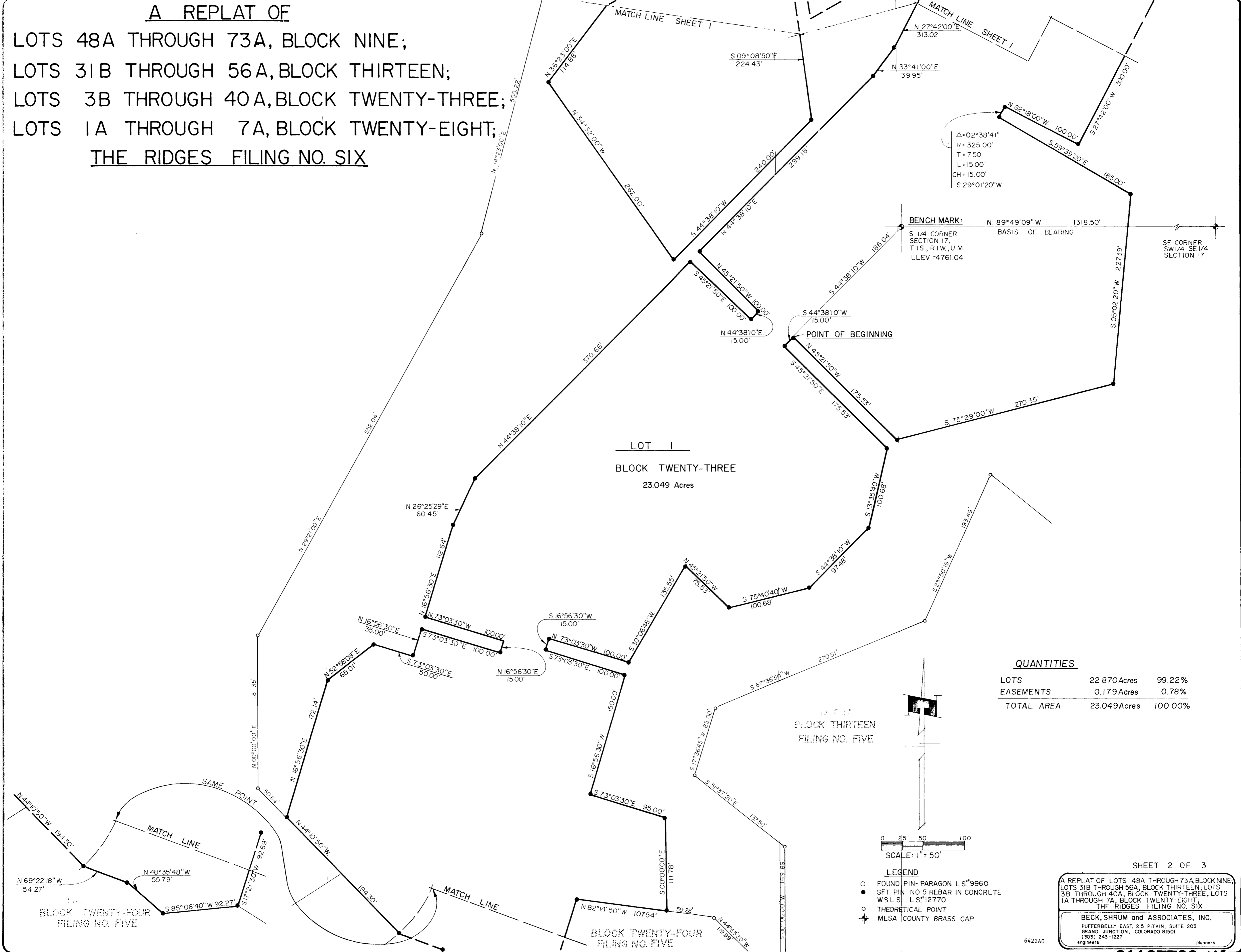


A REPLAT OF

LOTS 48A THROUGH 73A, BLOCK NINE;
 LOTS 31B THROUGH 56A, BLOCK THIRTEEN;
 LOTS 3B THROUGH 40A, BLOCK TWENTY-THREE;
 LOTS 1A THROUGH 7A, BLOCK TWENTY-EIGHT;
THE RIDGES FILING NO. SIX



Δ = 02°38'41"
 R = 325.00'
 T = 75.00'
 L = 15.00'
 CH = 15.00'
 S 29°01'20"W

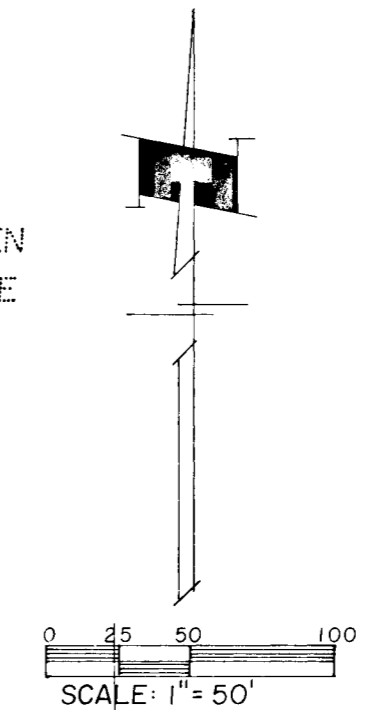
BENCH MARK: N 89°49'09" W 1318.50'
 BASIS OF BEARING
 S 1/4 CORNER SECTION 17,
 T 1 S, R 1 W, U M
 ELEV = 4761.04

SE CORNER SW 1/4 SE 1/4 SECTION 17

LOT 1
 BLOCK TWENTY-THREE
 23.049 Acres

QUANTITIES

LOTS	22 870 Acres	99.22%
EASEMENTS	0.179 Acres	0.78%
TOTAL AREA	23.049 Acres	100.00%



BLOCK THIRTEEN
 FILING NO. FIVE

- LEGEND**
- FOUND PIN- PARAGON L S#9960
 - SET PIN- NO 5 REBAR IN CONCRETE
 - W.S.L S L S#12770
 - THEORETICAL POINT
 - ⊕ MESA COUNTY BRASS CAP

SHEET 2 OF 3

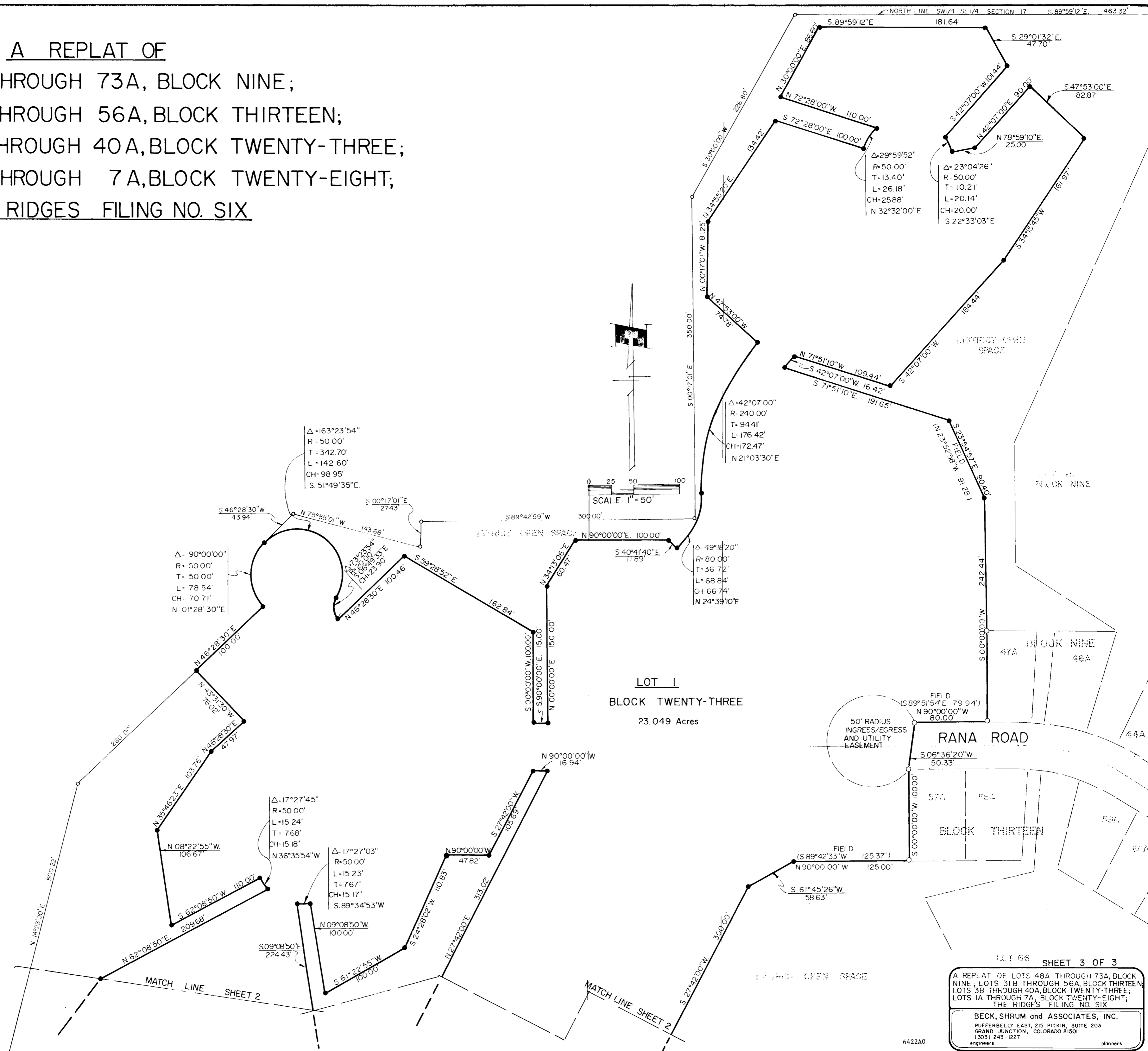
A REPLAT OF LOTS 48A THROUGH 73A, BLOCK NINE,
 LOTS 31B THROUGH 56A, BLOCK THIRTEEN, LOTS
 3B THROUGH 40A, BLOCK TWENTY-THREE, LOTS
 1A THROUGH 7A, BLOCK TWENTY-EIGHT,
 THE RIDGES FILING NO. SIX

BECK, SHRUM and ASSOCIATES, INC.
 PUFFERBELLY EAST, 215 PITKIN, SUITE 203
 GRAND JUNCTION, COLORADO 81501
 (303) 243-1227
 engineers planners

6422A0

A REPLAT OF

LOTS 48A THROUGH 73A, BLOCK NINE;
 LOTS 31B THROUGH 56A, BLOCK THIRTEEN;
 LOTS 3B THROUGH 40A, BLOCK TWENTY-THREE;
 LOTS 1A THROUGH 7A, BLOCK TWENTY-EIGHT;
THE RIDGES FILING NO. SIX



LOT 66 SHEET 3 OF 3
 A REPLAT OF LOTS 48A THROUGH 73A, BLOCK NINE; LOTS 31B THROUGH 56A, BLOCK THIRTEEN; LOTS 3B THROUGH 40A, BLOCK TWENTY-THREE; LOTS 1A THROUGH 7A, BLOCK TWENTY-EIGHT; THE RIDGES FILING NO. SIX
 BECK, SHRUM and ASSOCIATES, INC.
 PUFFERBELLY EAST, 215 PITKIN, SUITE 203
 GRAND JUNCTION, COLORADO 81501
 (303) 243-1227
 engineers planners

6422A0