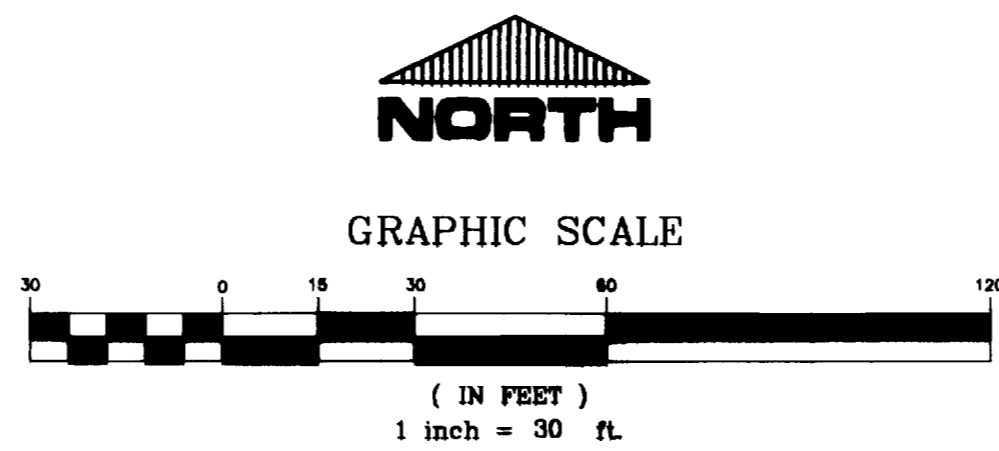
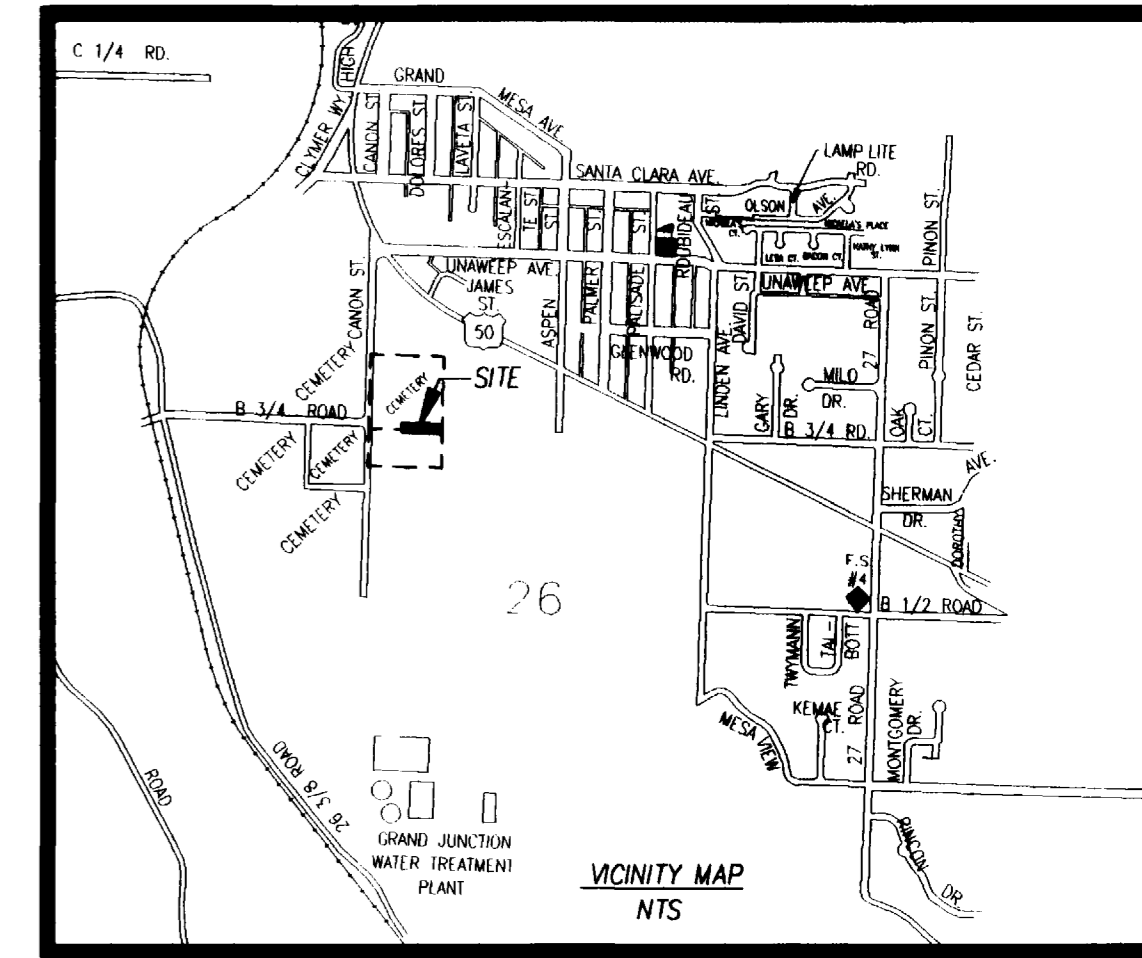


# ADDITION TO CALVARY CEMETERY

## ( MAUSOLEUM SITE )

SITUATE IN THE NE 1/4 NW 1/4 & SE 1/4 NW 1/4  
SECTION 26, TOWNSHIP 1 SOUTH, RANGE 1 WEST OF THE UTE MERIDIAN  
CITY OF GRAND JUNCTION, COUNTY OF MESA, STATE OF COLORADO

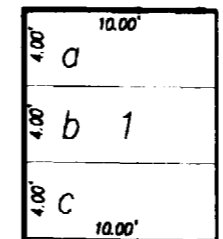


### LEGEND

- FOUND MESA COUNTY SURVEY MONUMENT
- SET NO. 5 REBAR & PLASTIC CAP PLS 22580
- △ CALCULATED POSITION

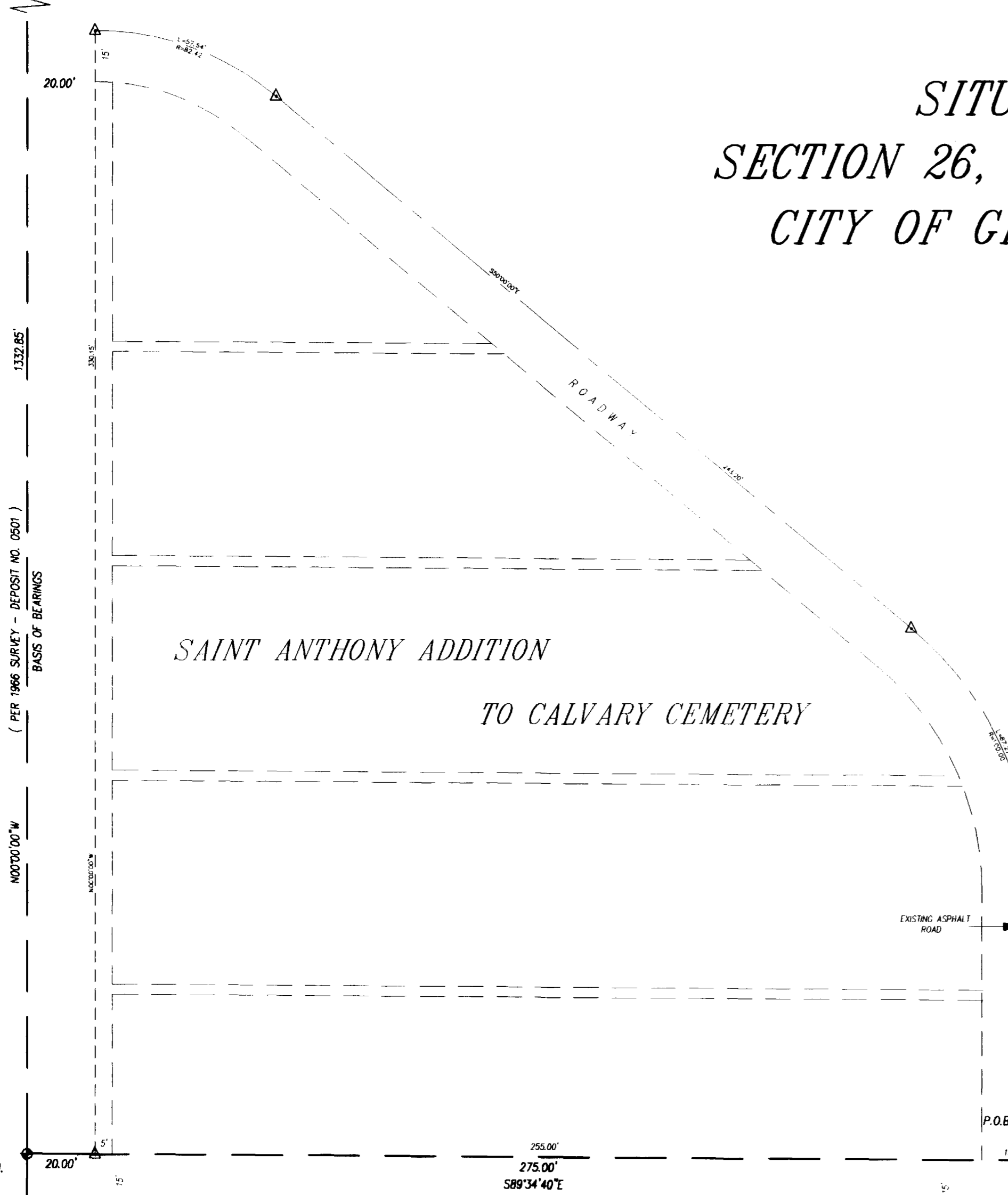
### TYPICAL 3-GRAVE LOT

NTS



26 1 / 4 ROAD

MCSM # 493  
NW CORNER  
NE 1/4 NW 1/4  
SECTION 26, T1S, R1W, U.M.



MCSM # 271  
SW CORNER  
SW 1/4 NE 1/4 NW 1/4  
SECTION 26, T1S, R1W, U.M.

That the City of Grand Junction, a Colorado home rule municipality, is the owner of that certain parcel of land situated in the NE 1/4 NW 1/4 and SE 1/4 NW 1/4 of Section 26, Township 1 South, Range 1 West of the Ute Meridian, City of Grand Junction, County of Mesa, State of Colorado, being more particularly described as follows:

Commencing at the Southwest corner of the SW 1/4 NE 1/4 NW 1/4 of said Section 26, whence the Northwest corner of the NE 1/4 NW 1/4 bears N 00°00'00" W a distance of 1332.85 feet, with all bearings contained herein being relative thereto; thence S 89°34'40" E along the south line of said SW 1/4 NE 1/4 NW 1/4 a distance of 304.89 feet to the True Point of Beginning of the parcel described herein; thence N 00°00'00" W a distance of 55.00 feet to a point; thence S 89°34'40" E a distance of 340.00 feet to a point; thence S 00°00'00" W a distance of 55.00 feet to a point on the south line of said SW 1/4 NE 1/4 NW 1/4; thence leaving said south line S 00°00'00" W a distance of 15.00 feet to the northeast corner of Lot 1, Block 1 of Calvary Cemetery as found recorded in Plat Book 2 at Page 41 of the records of the Mesa County Clerk and Recorder; thence N 89°34'40" W along the north line of Blocks 1 thru 8 of said Calvary Cemetery a distance of 340.00 feet to the northwest corner of Lot 2, Block 8 of said Calvary Cemetery; thence N 00°00'00" W a distance of 15.00 feet to the point of beginning, containing 0.562 acres.

That the said owner has caused said real property to be laid out and platted as Addition to Calvary Cemetery ( Mausoleum Site ) of the City of Grand Junction, Mesa County, Colorado.

IN WITNESS WHEREOF, the said City of Grand Junction, Colorado, has caused its officers names to be hereunto subscribed this 13<sup>th</sup> day of May, 1998.

*Janet Terry*  
PRESIDENT OF COUNCIL

*Stephanie Nye*  
CITY CLERK



STATE OF COLORADO )  
COUNTY OF MESA ) ss

STATE OF COLORADO )  
COUNTY OF MESA ) ss

The foregoing instrument was acknowledged before me this 13<sup>th</sup> day of May A.D. 1998. By Janet Terry as President of Council of the City of Grand Junction.

The foregoing instrument was acknowledged before me this 13<sup>th</sup> day of May A.D. 1998. By Stephanie Nye as City Clerk of the City of Grand Junction.

My commission expires: June 13, 1999  
WITNESS MY HAND AND OFFICIAL SEAL.

My commission expires: June 13, 1999  
WITNESS MY HAND AND OFFICIAL SEAL.

*Theresa J. Marting*  
Notary Public

*Theresa J. Marting*  
Notary Public

### CLERK AND RECORDER'S CERTIFICATE

STATE OF COLORADO )  
COUNTY OF MESA ) ss  
I hereby certify that this instrument was filed in my office at 1:30 o'clock P.M., this 13<sup>th</sup> day of May, 1998 and is duly recorded as Reception Number 1846763 in Plat Book 16, Page 170 through Drawer FF 75  
*Monika Tondal* Deputy Clerk and Recorder  
*Kathleen West* Fees 8.00 + 1.00

### SURVEYOR'S CERTIFICATE

I, Steve R. Pace, do hereby certify that the accompanying plat of Addition to Calvary Cemetery ( Mausoleum Site ) subdivision of a part of the City of Grand Junction, County of Mesa, has been prepared under my supervision and accurately represents a field survey of the same.

*Steve R. Pace*  
Steve R. Pace  
Registered Professional Land Surveyor  
P.L.S. No. 22300  
5-13-98  
Date

### NOTES:

- 1) BEARINGS ARE BASED ON A BEARING OF NORTH, 1332.85 BETWEEN FOUND MONUMENTS AT THE SW CORNER OF THE SW 1/4 NE 1/4 NW 1/4 AND THE NW CORNER OF THE NE 1/4 NW 1/4, OF SECTION 26, T1S, R1W OF THE UTE MERIDIAN.
- 2) ALL GRAVES ARE 4' x 10' UNLESS OTHERWISE NOTED.
- 3) 4" CONCRETE MONUMENTS SET AT ALL GRAVE LOT CORNERS.
- 4) SEE SAINT ANTHONY ADDITION TO CALVARY CEMETERY PLAT ( PLAT BK. 10, P. 36 ) AND MAP OF CALVARY CEMETERY ( PLAT BK. 2, P. 41 ) OF THE MESA COUNTY CLERK AND RECORDER.
- 5) SEE SURVEY PLAT DEPOSIT NO. 0501 OF THE MESA COUNTY SURVEY RECORDS.

CEMETERY

REVISION	DESCRIPTION	DATE	DRAWN BY SRP	DATE 05-12-98	SCALE
1			CHECKED BY	DATE	1" = 30'
2			APPROVED BY	DATE	
3			FIELD BOOK NO.	PAGE	

DEPARTMENT OF PUBLIC WORKS AND UTILITIES  
ENGINEERING DIVISION  
CITY OF GRAND JUNCTION, COLORADO

ADDITION TO CALVARY CEMETERY ( MAUSOLEUM SITE )  
NE 1/4 NW 1/4 & SE 1/4 NW 1/4 SECTION 26, T1S, R1W, U.M.  
CITY OF GRAND JUNCTION, COUNTY OF MESA, STATE OF COLORADO

SHEET NO. 1  
OF 1  
FILE NO. CATHCEM.DWG  
01200401