

Legal Description:
 That part of Tract B in Lakeside Subdivision Filing Number Two as Recorded in Book 11, Page 70 with the Mesa County Clerk and Recorders office in Mesa County, Colorado. Said subdivision being in the City of Grand Junction, Colorado.

Beginning at a point from whence the NE Corner of said Tract B bears S 89°45'20" E 25.01 ft and N 00°14'40" E 463.94 ft, Thence N 00°14'40" E 145.0 ft, Thence N 89°45'20" W 207.0 ft, Thence N 00°14'40" E 147.73 ft, Thence S 89°45'20" E 47.1 ft, Thence N 00°14'40" E 4.0 ft, Thence S 89°45'20" E 24.33 ft, Thence S 00°14'40" W 2.0 ft, Thence S 89°45'20" E 24.0 ft, Thence S 00°14'40" W 4.0 ft, Thence S 89°45'20" E 35.0 ft, Thence S 00°14'40" W 147.73 ft, Thence S 89°45'20" E 113.57 ft to the Point of Beginning.

Also, Beginning at a point from whence the NE Corner of said Tract B bears N 00°14'40" E 221.94 ft and S 89°45'20" E 25.0 ft, Thence N 89°45'20" W 103.5 ft, Thence N 00°14'40" E 33.13 ft, Thence N 89°45'20" W 45.0 ft, Thence S 00°14'40" W 4.0 ft, Thence N 89°45'20" W 24.0 ft, Thence S 00°14'40" W 2.0 ft, Thence N 89°45'20" W 24.33 ft, Thence N 00°14'40" E 2.0 ft, Thence N 89°45'20" W 24.0 ft, Thence N 00°14'40" E 4.0 ft, Thence N 89°45'20" W 47.1 ft, Thence N 00°14'40" E 145.08 ft, Thence N 89°45'20" W 20.0 ft, Thence N 00°14'40" E 32.5 ft, Thence S 89°59'00" E 288.0 ft, Thence S 00°14'40" W 211.84 ft to the Point of Beginning.

OWNER'S CERTIFICATE
 T. L. Benson, Inc., a Colorado corporation, and Valley Services Corporation, a Colorado corporation, owners of the herein described real property, do hereby certify that this map of Lakeview Terrace has been prepared pursuant to the declarations of Lakeside Planned Unit Development as recorded with the Clerk and Recorder of Mesa County, Colorado.

T. L. BENSON, INC.
 By *T. L. Benson*
 Attest *Marion J. Benson*
 VALLEY SERVICES CORPORATION
 By *O. K. Clifton*
 Attest *Betty Willhite*

STATE OF COLORADO)
 COUNTY OF MESA)^{SS}
 The foregoing was acknowledged before me this 10th day of March, 1976, by T. L. Benson, President and Marion J. Benson as Secretary of T. L. Benson, Inc., a Colorado corporation, and by O. K. Clifton, President and Betty Willhite Secretary of Valley Services Corporation.
 My commission expires December 17, 1979

Clarence J. Bielax, Registered Land Surveyor, certifies that this plot consisting of seven pages, depicting the land, buildings and other improvements, with diagrammatic floor plans of each building was plotted from a field survey made under my supervision on February 21, 1974, subsequent to substantial completion of the improvements.
Clarence J. Bielax
 Registered Land Surveyor

1103927

FILED IN 1976
 of 845
 SAKE SAWYER, County Clerk & Recorder
 Filed - 10.00

SCALE 1" = 30'

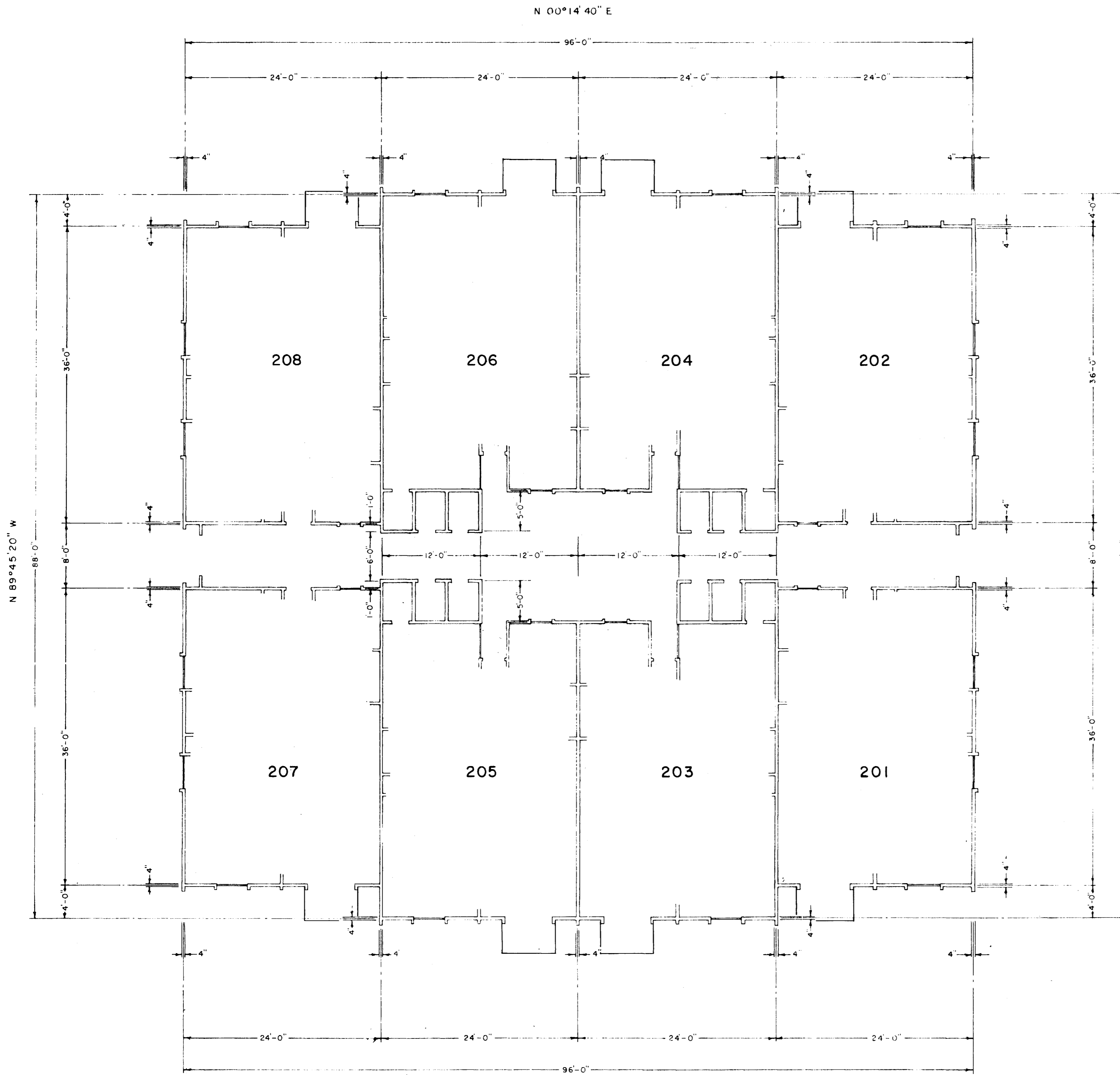
SITE & PLOT PLAN
 3150 LAKESIDE DRIVE
 LAKEVIEW TERRACE
 IN
 LAKESIDE SUBDIVISION

REVISOR: MAR 9 1976
 REVISOR: FEB 6 1975

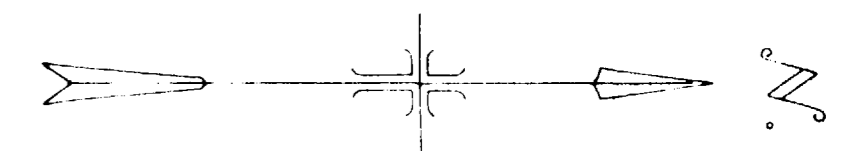
SURVEYED BY *C. J. Bielax* DRAWN BY *R. W. G.*

WESTERN ENGINEERS, INC. - GRAND JUNCTION, COLO. D.W.C. 1-59-74





FINISHED FLOOR ELEV. 4685.02



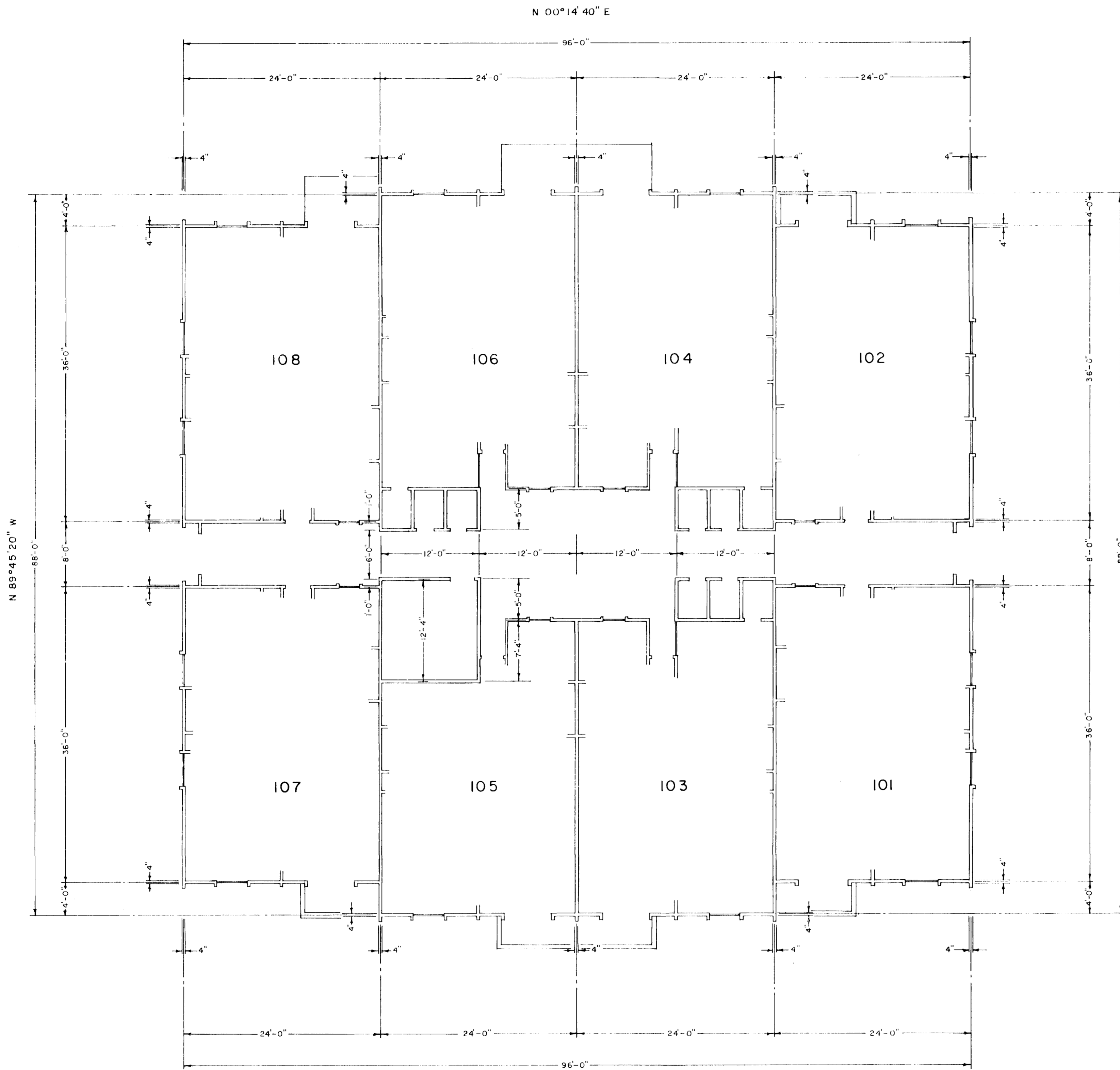
SCALE 1/4" = 1'-0"

BRIARWOOD
 3156 LAKESIDE DRIVE
 LAKEVIEW TERRACE
 IN
 LAKESIDE SUBDIVISION

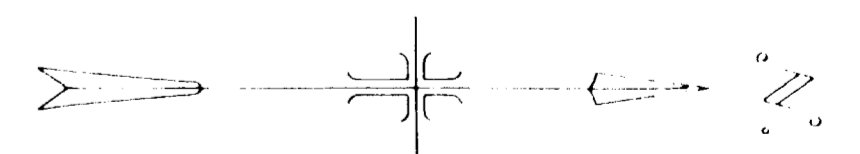
SURVEYED D.B. DRAWN R.W.Q.

WESTERN ENGINEERS, INC. GRAND JUNCTION, COLO. DWS. 774-425-298

MIDDLE FLOOR



FINISHED FLOOR ELEV. 4676.14



SCALE 1/8" = 1'-0"

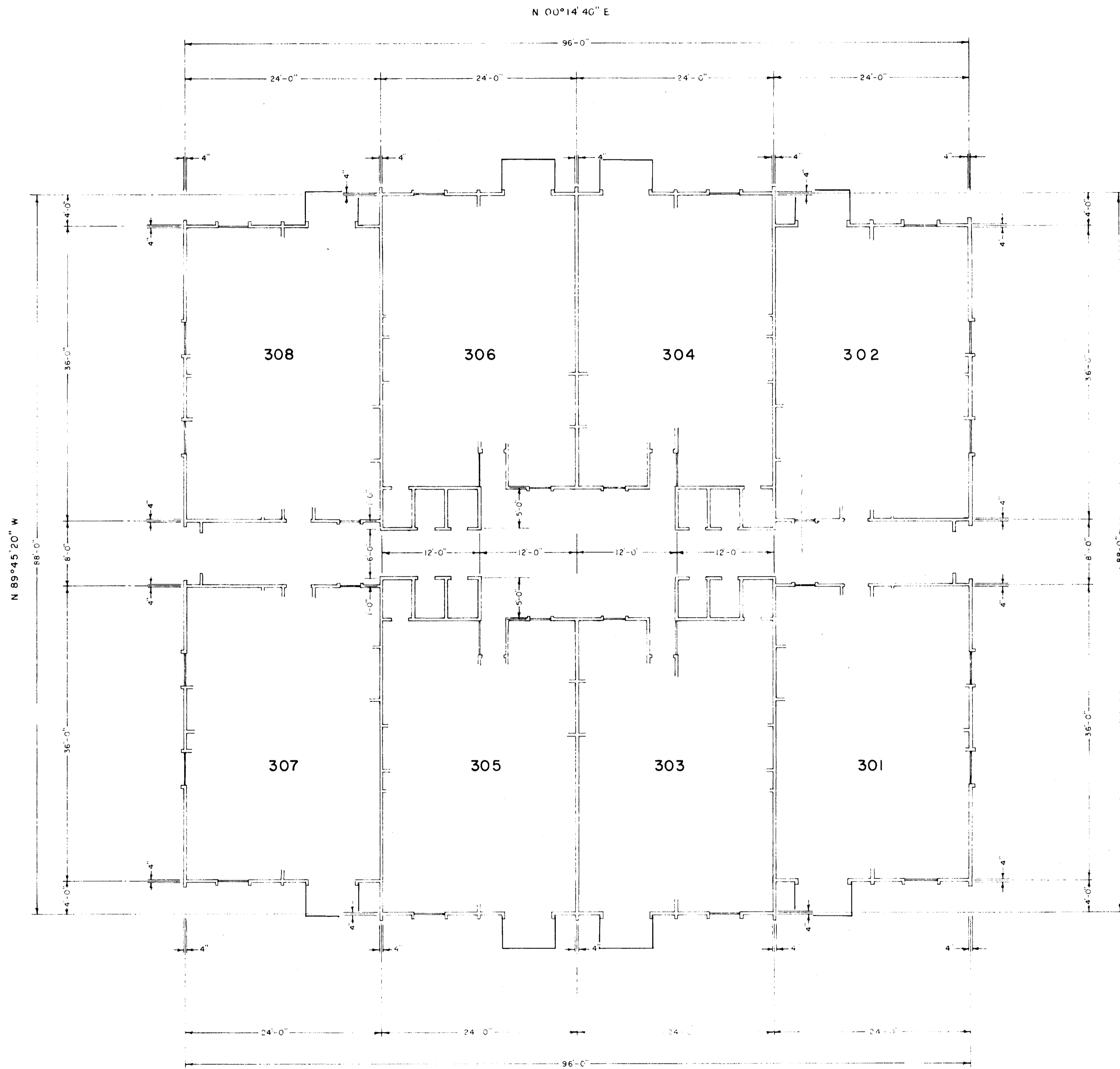
BRIARWOOD
 3156 LAKESIDE DRIVE
 LAKEVIEW TERRACE
 IN
 LAKEVIEW SUBDIVISION

FIRST FLOOR

SURVEYED... D.B. ... DRAWN... H.W.G.

WESTERN ENGINEERS, INC. GRAND JUNCTION, COLO. 81501 774 424 234

01203003.tif



FINISHED FLOOR ELEV. 4693.93

UPPER FLOOR

SCALE 1/4" = 1'-0"

BRIARWOOD
 3150 LAKESIDE DRIVE
 LAKEVIEW TERRACE
 IN
 LAKEIDE SUBDIVISION

SURVEYED D.B. DRAWN R.W.O.

WESTERN ENGINEERS, INC. GRAND JUNCTION, COLO. DWG. 774-429-29 C

01203004.tif