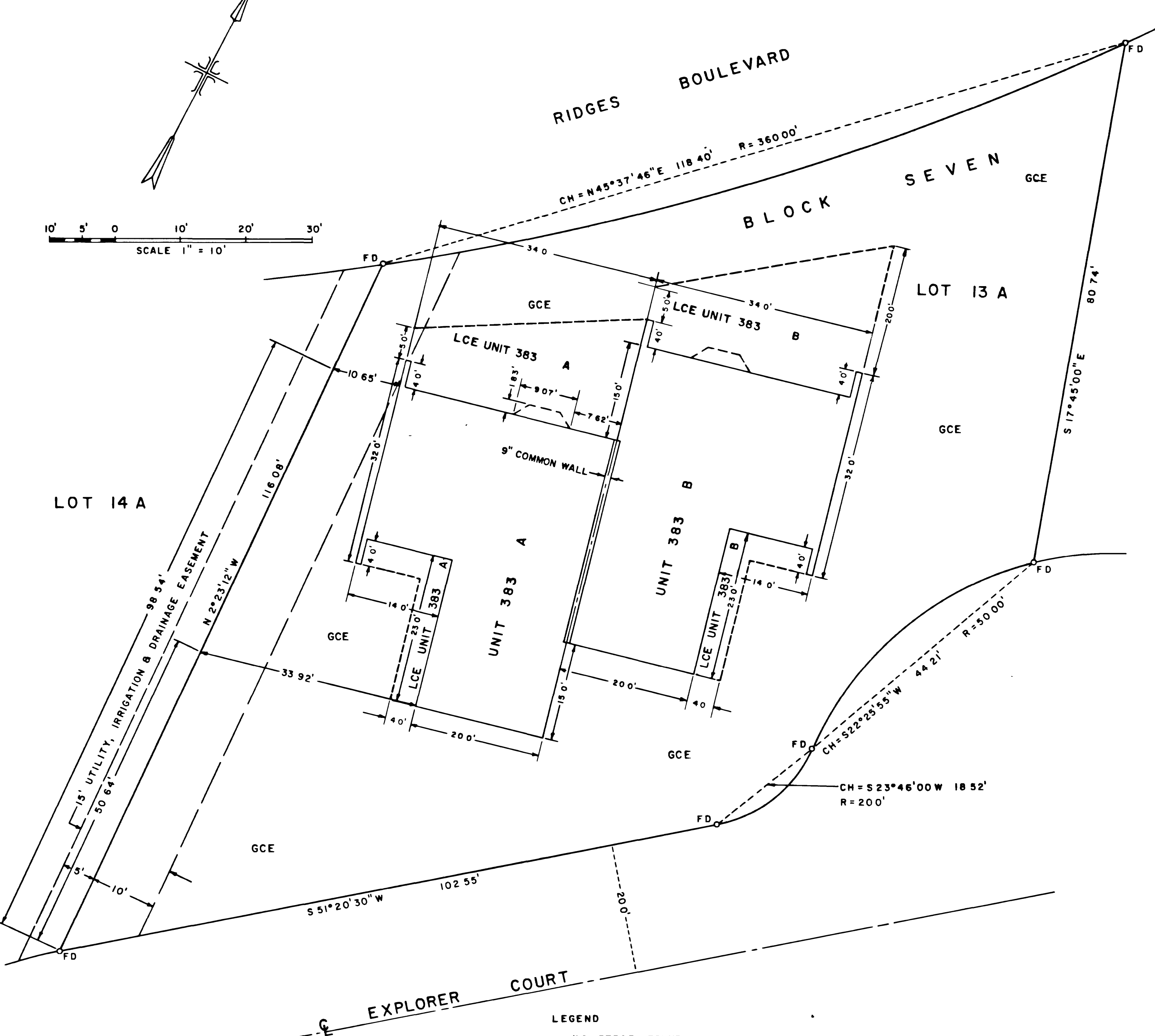
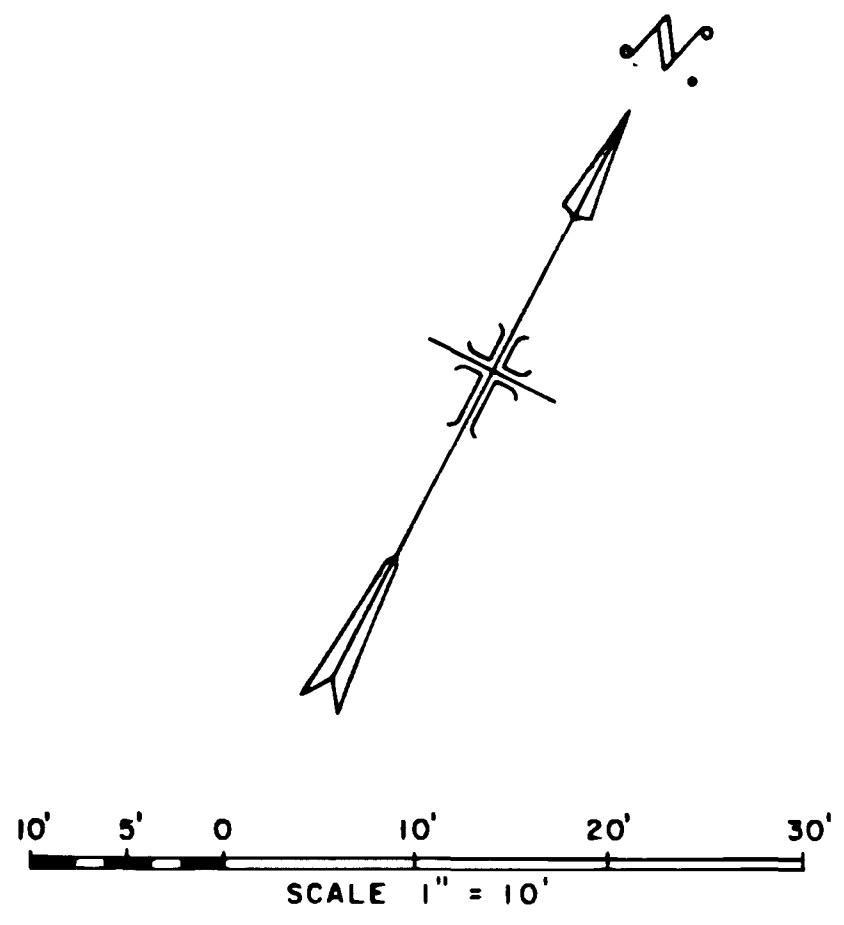


FIFTH AMENDED  
 CONDOMINIUM MAP OF  
**ROCK RIDGE CONDOMINIUMS**  
 MESA COUNTY, COLORADO



**OWNERS CERTIFICATE**

Design Structures of Grand Junction Inc, Dan Hunter, President, and Larry Klebold, Secretary, as owners of the herein described real property, do hereby certify that this amended map of Rock Ridge Condominiums has been prepared pursuant to the declarations of Rock Ridge Condominiums recorded June 25, 1980, Book 1263, Page 377, the Amendment to Condominium Declaration to Rock Ridge Condominiums recorded July 10, 1980, Book 1265, Page 387, in the records of Mesa County, Colorado, and the further Amendment to the Condominium Declaration to Rock Ridge Condominiums recorded June 25, 1981, Book 1320, Page 239, in the records of Mesa County, Colorado

Attest  
 DESIGN STRUCTURES OF GRAND JUNCTION INC, A COLORADO CORPORATION  
 Dan Hunter, President  
 Larry Klebold, Secretary

STATE OF COLORADO )  
 COUNTY OF MESA ) ss

The foregoing instrument was acknowledged before me this 9 day of September, A D, 1981, by Dan Hunter, President, and Larry Klebold, Secretary, officers of Design Structures of Grand Junction, Inc, a Colorado Corporation.

Witness my hand and official seal  
 My commission expires 4/25/83

*James Ober*  
 Notary Public

**CLERK AND RECORDERS CERTIFICATE**

STATE OF COLORADO )  
 COUNTY OF MESA ) ss

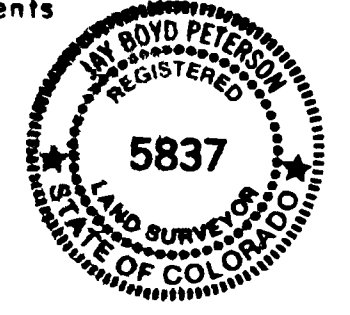
I hereby certify that this instrument was filed in my office at 3:50 o'clock P. M, this 18<sup>th</sup> day of September, A D, 1981 and is duly recorded in Plat Book No. 1269415, Page 5-68

*Carl Sawyer* Clerk and Recorder  
*By Hazel M. Huskey* Deputy  
 Fees \$ 10.00

**SURVEYOR'S CERTIFICATE**

I, J Boyd Peterson, do hereby certify that this plat was made from notes of a field survey made under my direct responsibility, supervision, and checking Said plat represents the location of the Rock Ridge Condominiums on Lot 13A, Block 7, Replat of Block Seven and a part of Block Seventeen, The Ridges, Filing No Three, as filed in the Office of the Clerk and Recorder of Mesa County. And I further certify that the Condominium map substantially depicts the location of the building, the units, the unit designation, the dimensions of the units and the building symbol. Such condominium map was prepared subsequent to substantial completion of the improvements.

*J Boyd Peterson*  
 J Boyd Peterson, Colo Reg No 5837



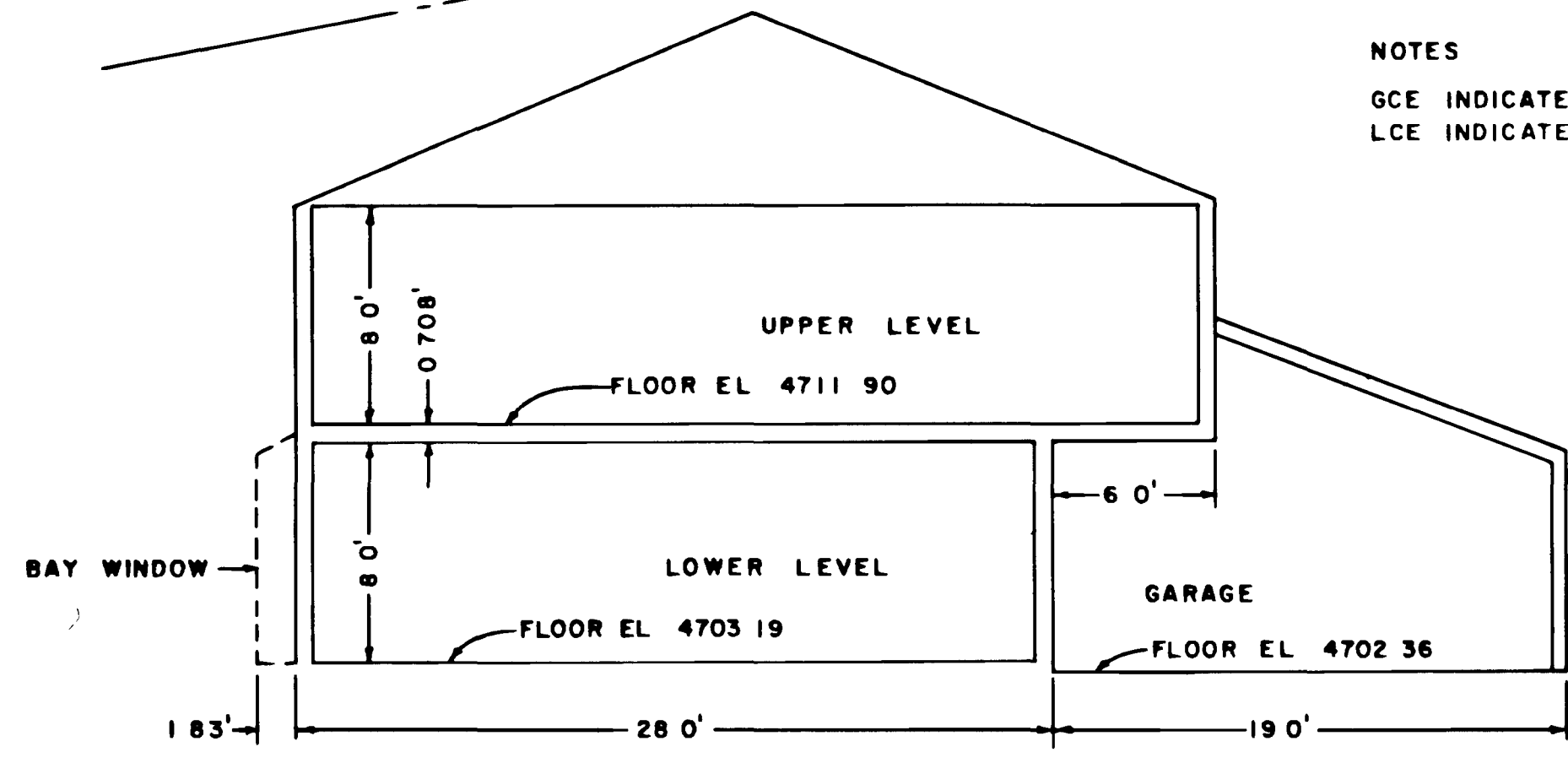
**AMENDMENT CERTIFICATE**

This map is an amendment to that certain condominium map relating to Lots 17A, 16A, 15A, and 14A Block 7, Replat of Block Seven and a part of Block Seventeen, The Ridges, Filing No Three, previously recorded on June 25<sup>th</sup>, 1980 at Book 12, Page 110 of the book of plats of the records of the Clerk of Mesa County Clerk and Recorder's Office, and the amendment to the condominium map previously recorded on Oct 16<sup>th</sup>, 1980 at Book 12, Page 110, of the book of plats of the records of the Clerk at the Mesa County Clerk and Recorder's Office

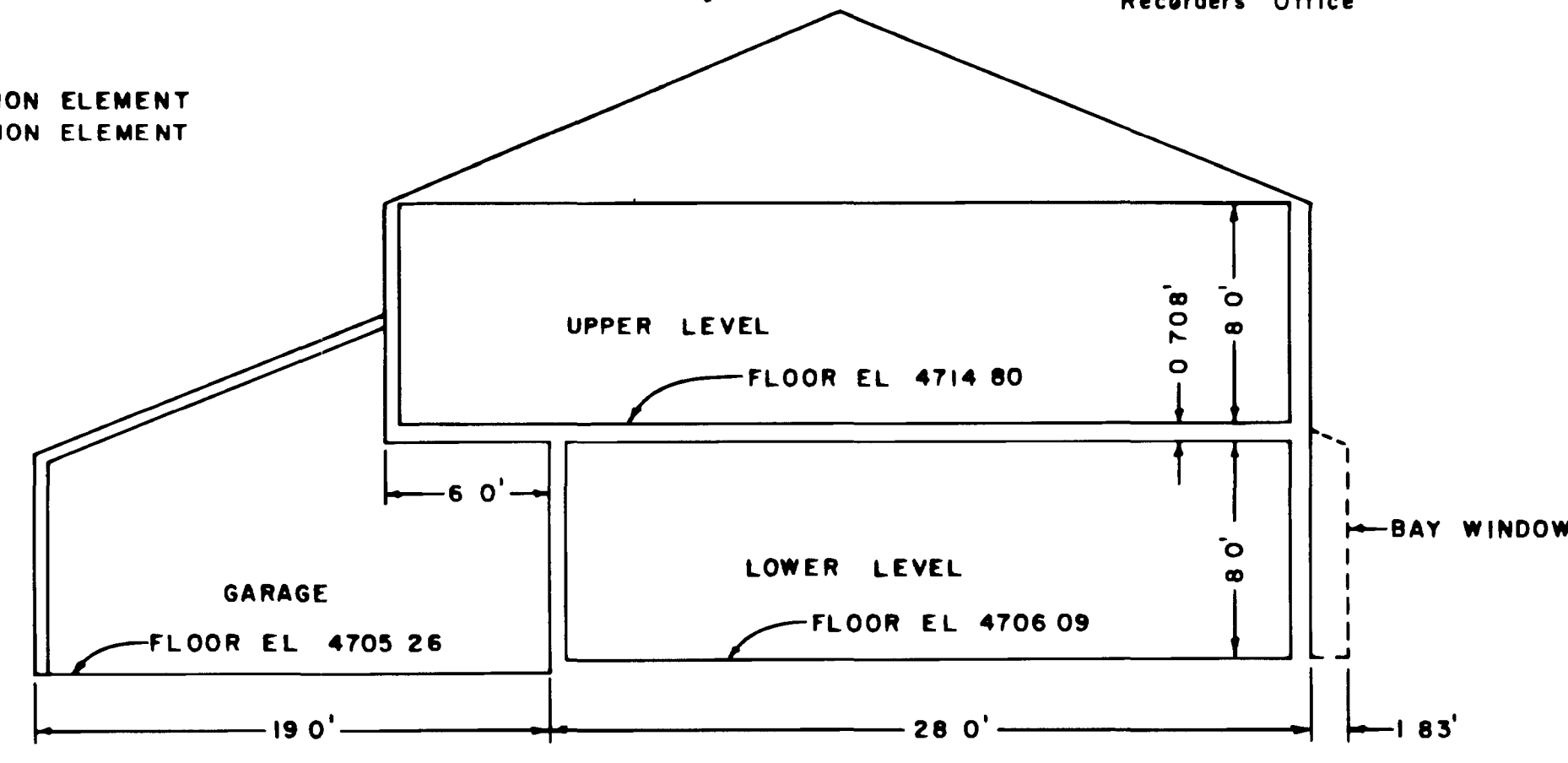
DESIGN STRUCTURES OF GRAND JUNCTION INC, A COLORADO CORPORATION  
 Dan Hunter, President  
 Larry Klebold, Secretary

**LEGEND**  
 • #5 REBAR FOUND

**NOTES**  
 GCE INDICATES GENERAL COMMON ELEMENT  
 LCE INDICATES LIMITED COMMON ELEMENT



ELEVATION THRU UNIT 383 A  
 (LOOKING SOUTHEAST)  
 SCALE 1" = 6'



ELEVATION THRU UNIT 383 B  
 (LOOKING NORTHWEST)  
 SCALE 1" = 6'

**EXHIBIT "B"**

**NOTICE:** According to Colorado law you must commence any legal action based upon any defect in this survey within six years after you first discover such defect. In no event, may any action based upon any defect in this survey be commenced more than ten years from the date of the certification shown herein.

WESTERN ENGINEERS INC  
 FOURTH AMENDED CONDOMINIUM MAP OF  
**ROCK RIDGE CONDOMINIUMS**  
 UNITS 383 A AND 383 B  
 LOT 13A - BLOCK 7  
 REPLAT OF BLOCK 7 B PART OF BLOCK 17  
 THE RIDGES FILING NO 3  
 MESA COUNTY, COLORADO  
 SURVEYED, R.A.M. DRAWN, R.W.D. CHECKED, J.B.P.  
 GRAND JUNCTION, COLO DWG 534-907-14 3/3/81