

AMENDED PALACE ESTATES CONDOMINIUM MAP OF LOTS 8, 9, AND 10, BLOCK 1

DEDICATION

KNOW ALL MEN BY THESE PRESENTS, That the undersigned, Village Land Co., is the owner of that real property situated in the County of Mesa, State of Colorado, and being a part of the SE 1/4 of the SW 1/4 of Section 8, Township 1 South, Range 1 East of the 11th Principal Meridian as shown on the accompanying Plat and more particularly described as follows:
Lots 8, 9, & 10, Block 1, Palace Estates Subdivision.

IN WITNESS WHEREOF, said Owner, Village Land Co., a Colorado Corporation, Emanuel G. Pavlakis, President, and Theodore E. Pavlakis, Secretary, have caused their names to be hereon subscribed this 13th Day of July, A.D., 1979.

Emanuel G. Pavlakis
Emanuel G. Pavlakis, President

Theodore E. Pavlakis
Theodore E. Pavlakis, Asst Secy

STATE OF COLORADO)
COUNTY OF ~~Mesa~~ **DENVER**) SS

The foregoing instrument was acknowledged before me this 13th Day of July, A.D., 1979, by Village Land Co., Emanuel G. Pavlakis, President, and Theodore E. Pavlakis, Secretary.

Theodore E. Pavlakis
THEODORE E. PAVLAKIS, ASST

Notary my hand and official seal, My commission expires July 30, 1980.

Mary Ellen Danne
Notary Public

(CLERK AND RECORDER'S CERTIFICATE)

STATE OF COLORADO)
COUNTY OF MESA) SS

I hereby certify that this instrument was filed in my office at 9:22 o'clock A.M., July 16th, A.D., 1979, and duly recorded in Plat book No. Filed 0-83, Page 1197153.

Earl Sawyer
Earl Sawyer
Clerk and Recorder

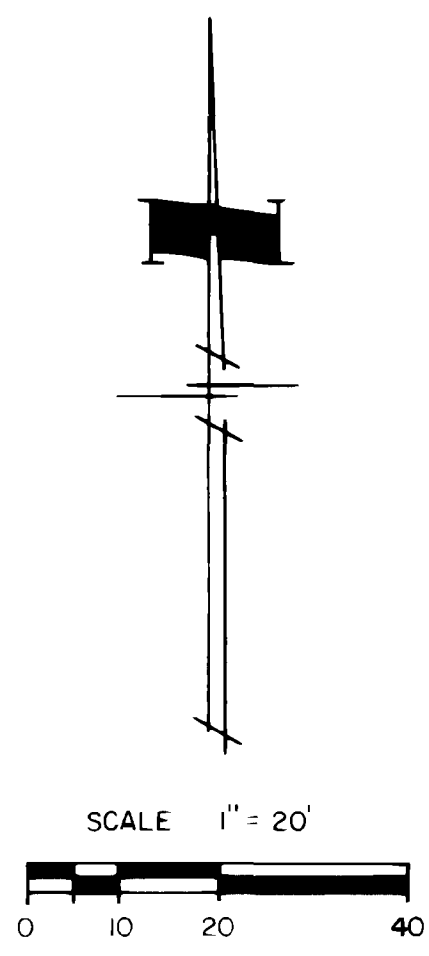
Fee \$ 20.00

Deputy

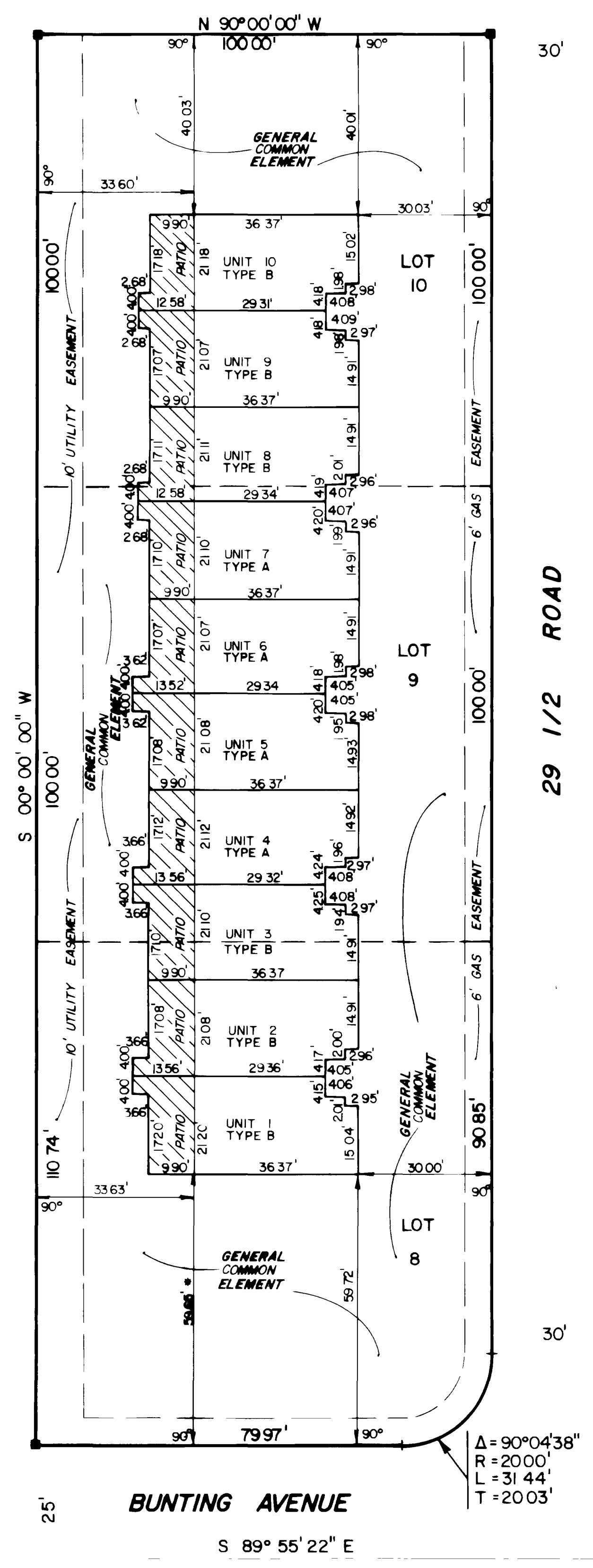
ENGINEER'S CERTIFICATE

I, Richard L. Atkins, being a Registered Professional Engineer in the State of Colorado, do hereby certify that the Amendment to Palace Estates Condominium Map of Lots 8, 9, & 10, Block 1, substantially depicts the location and the horizontal and vertical measurements of the units, the unit designations, building symbols, the ceilings as constructed, and the elevations of the unfinished floor.

Richard L. Atkins
Richard L. Atkins
12291



- LEGEND**
- INDICATES PINS FOUND MARKED "RYDEN LS 9331"
 - ⊙ MESA COUNTY BRASS CAP
 - * INDICATES CALCULATED DIMENSION
 - ▨ LIMITED COMMON ELEMENT
 - GENERAL COMMON ELEMENT

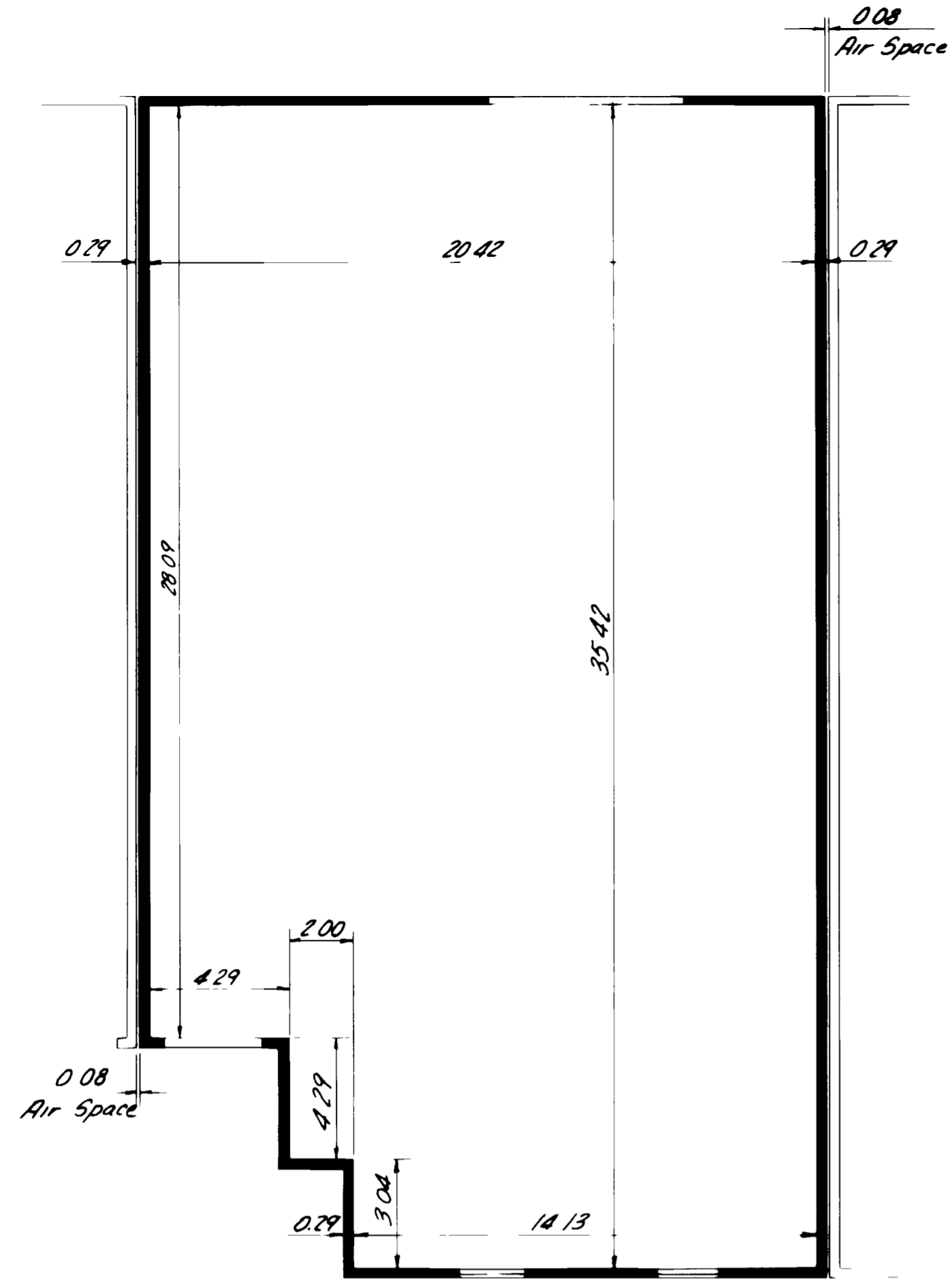


NE CORNER, SE 1/4, SW 1/4, SECTION 8, T1S, R1E, U1M

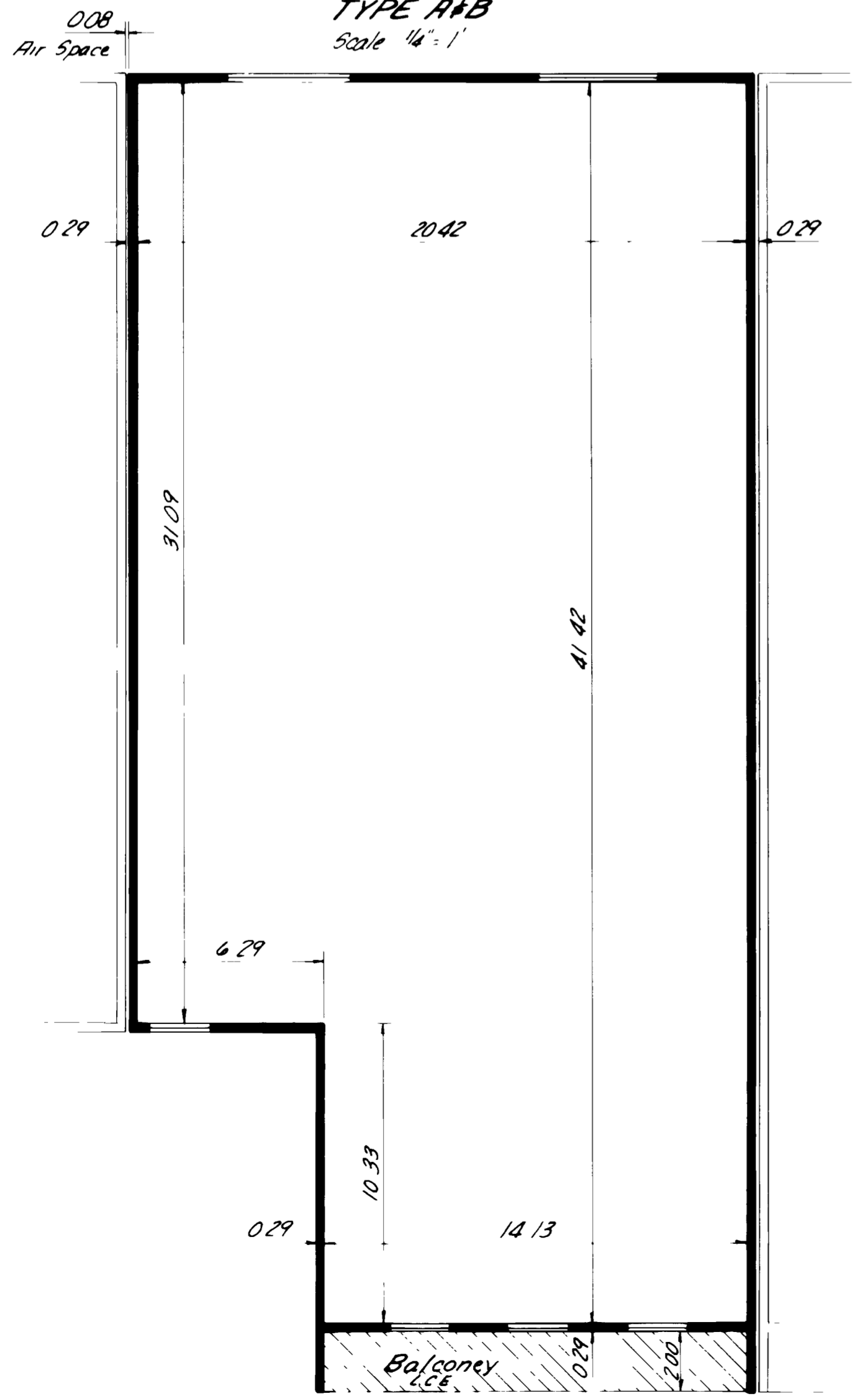
EAST LINE, SW 1/4, SECTION 8, T1S, R1E, U1M

SE CORNER, SE 1/4, SW 1/4, SECTION 8, T1S, R1E, U1M

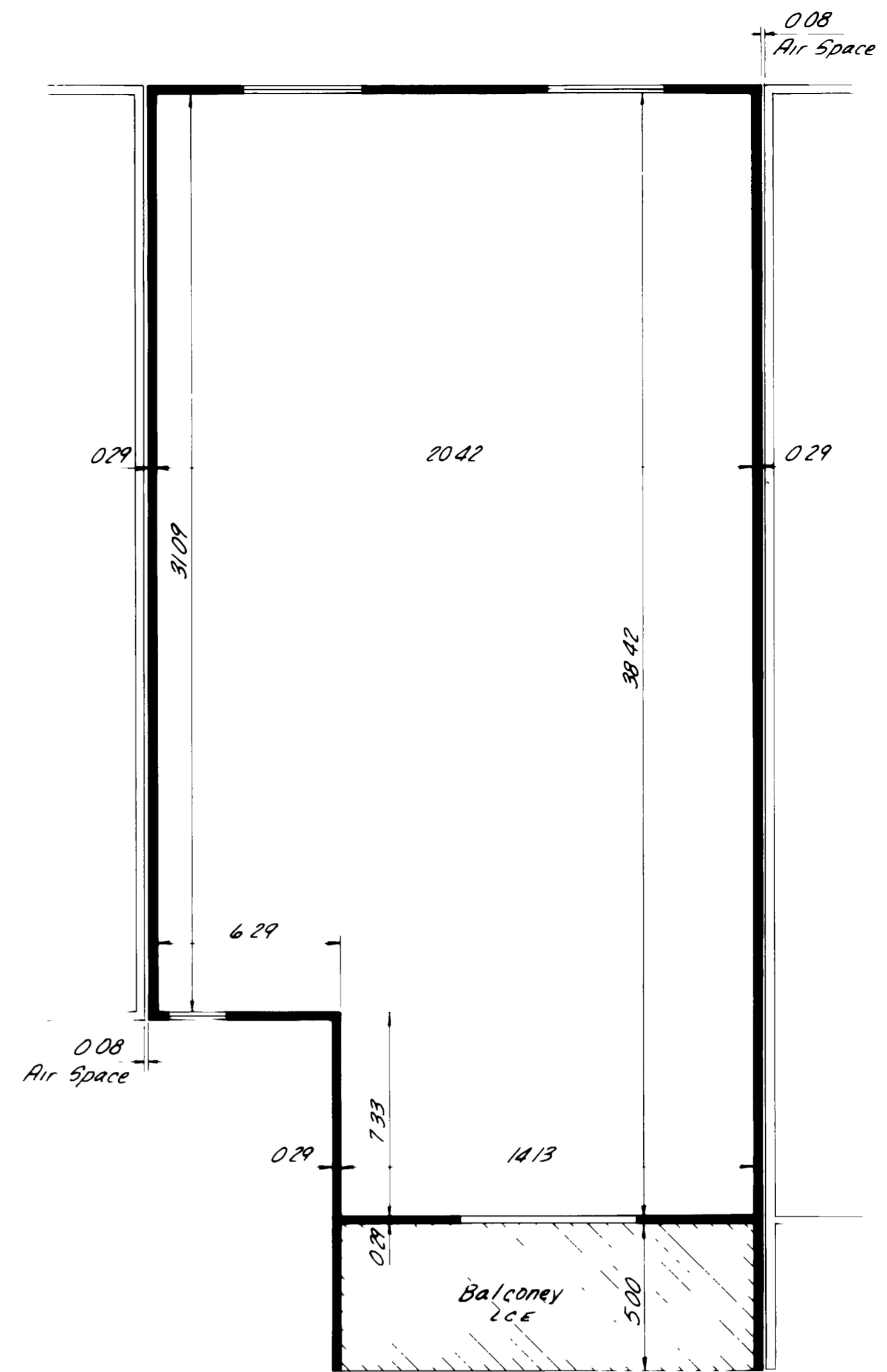
<p>AMENDED PALACE ESTATES CONDOMINIUM MAP OF LOTS 8, 9, AND 10 BLOCK 1</p>	<p>Atkins & Associates CONSULTING ENGINEERS</p> <p>576 25 Road Suite 10 Grand Junction, Co 81501 (303) 245-7551</p>
---	--



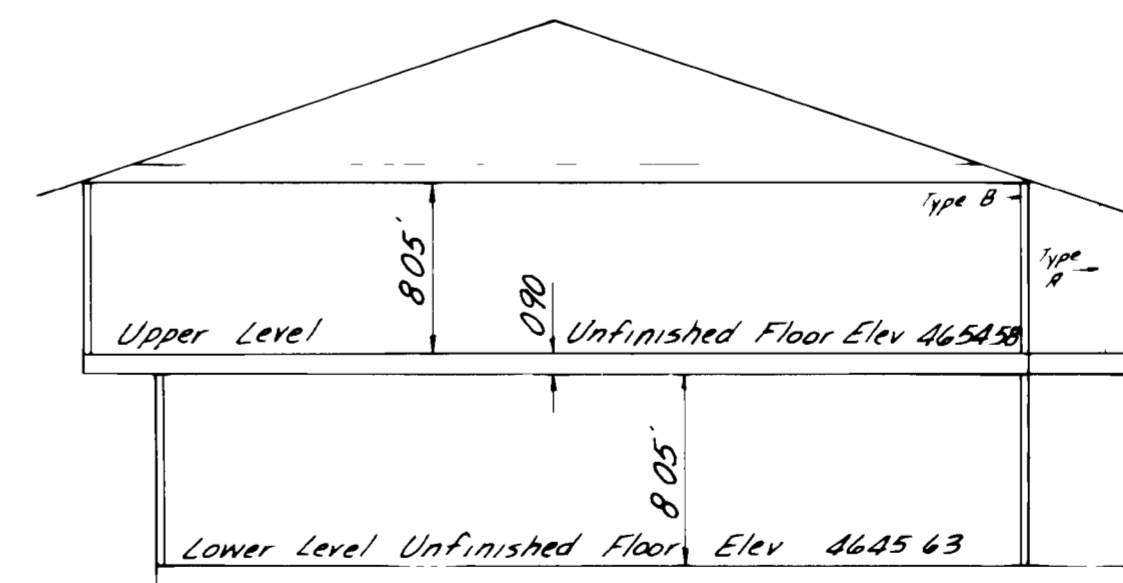
LOWER LEVEL
TYPE A+B
Scale 1/4" = 1'



UPPER LEVEL
TYPE A
Scale 1/4" = 1'



UPPER LEVEL
TYPE B
Scale 1/4" = 1'



SIDE ELEVATION
TYPE A+B
Scale 1/8" = 1'

AMENDED
PALACE ESTATES
CONDOMINIUM MAP OF
LOTS 8,9,AND 10
BLOCK I



Atkins &
Associates
CONSULTING ENGINEERS

576 25 Road Suite 10
Grand Junction, Co 81501
(303) 245-7551