

NEFF SUBDIVISION

DEDICATION

KNOW ALL MEN BY THESE PRESENTS:

That the undersigned, MERLE W. NEFF and GEORGIA E. NEFF, are the owners of that real property situated in the COUNTY OF MESA, STATE OF COLORADO, and lying in the SW 1/4 NW 1/4 Sec 32 T1S R1E U.M. as shown on the accompanying plat thereof and more particularly described as follows: Beginning at a point 109.1 ft. S89°48'W along the North line SW 1/4 NW 1/4, from the NE cor. SW 1/4 NW 1/4 Sec. 32 T1S R1E U.M., thence 191.53 ft. S00°12'E, thence Southerly along the arc of a 50 ft radius circle whose center is 50 ft. S29°48'W, a distance of 104.72 ft., thence 26.47 ft. S00°12'E, thence 237.22 ft. N62°18'W parallel to the R.O.W. line of U.S. Highway 50 previous to the year 1958, thence 193.67 ft. N00°12'W to the North line SW 1/4 NW 1/4, thence 209.64 ft. N89°48'E. to point of beginning.

That said owners do hereby dedicate and set apart all of the streets and roads as shown on the accompanying plat to the use of the public forever and hereby dedicate those portions of said real property which are labeled as utility easements on the accompanying plat as easements for the installation and maintenance of such utilities as telephone and electric lines, poles and cables; storm and sanitary sewer mains; water mains; gas pipe lines and those portions of said real property which are labeled as irrigation easements on the accompanying plat as easements for the installation and maintenance of irrigation ditches, flumes & conduits;

That all expenses for installation of utilities or ditches referred to above for grading or landscaping and for street graveling or improvements shall be financed by the seller or purchaser --- not the County of Mesa.

IN WITNESS WHEREOF, said MERLE W. NEFF and GEORGIA E. NEFF have caused their names to be hereunto subscribed this 20th day of March A.D. 1961.

By Merle W. Neff
Georgia E. Neff

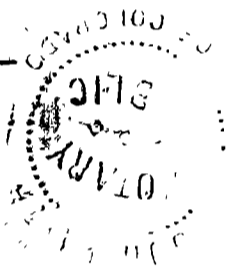
STATE OF COLORADO } s.s.
COUNTY OF MESA

The foregoing instrument was acknowledged before me this 20th day of March, A.D. 1961, by MERLE W. NEFF and GEORGIA E. NEFF.

My commission expires Sept 20, 1964
Witness my hand and official seal

Bob Jones
NOTARY PUBLIC

787902



CLERK AND RECORDERS CERTIFICATE
STATE OF COLORADO } s.s.
COUNTY OF MESA

I hereby certify that this instrument was filed in my office at 11:20 o'clock A.M. March 21 A.D. 1961 and is duly recorded in Plat Book No. 9 Page 133.

Annie M. Dumas
Clerk and Recorder

By _____
Deputy

Fees \$6.00

SURVEYOR'S CERTIFICATE

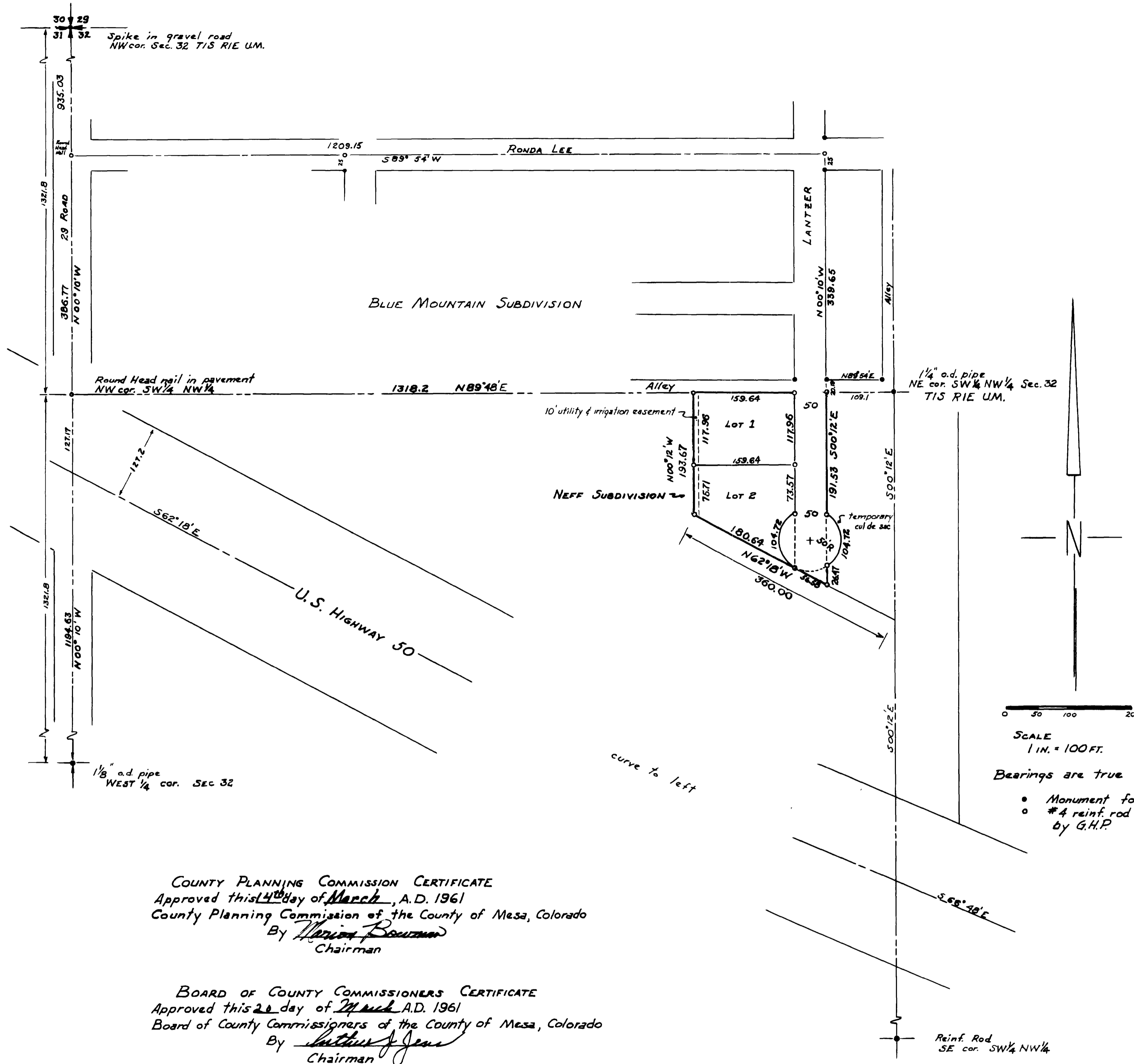
I, GERARD H. PESMAN, do hereby certify that the accompanying plat of NEFF SUBDIVISION, a subdivision of a part of the COUNTY OF MESA, has been prepared by me, and accurately represents a field survey of same.

By Gerard H. Pesman
Colo. Reg. Prof. Eng'r & Land Surveyor 2376



PLAT OF
NEFF SUBDIVISION

By
GERARD H. PESMAN
711 No. 7th - GRAND JCT. - COLO.
3/1/61



COUNTY PLANNING COMMISSION CERTIFICATE
Approved this 4th day of March, A.D. 1961
County Planning Commission of the County of Mesa, Colorado
By Arthur P. Boush
Chairman

BOARD OF COUNTY COMMISSIONERS CERTIFICATE
Approved this 20 day of March, A.D. 1961
Board of County Commissioners of the County of Mesa, Colorado
By Arthur P. Boush
Chairman