

DEDICATION

KNOW ALL MEN BY THESE PRESENTS:

That the undersigned, A. L. Arbuckle, Asunta L. Arbuckle and M. B. SeEVERS are the owners of that real property situated in Burns Subdivision, County of Mesa, State of Colorado as shown on the accompanying plat and as described by the following metes and bounds description:

Beginning at a point from whence the Southeast Corner of Section 32 Township 1 South, Range 1 East of the Ute Meridian bears South 656.0 feet, said point of beginning being the southeast corner of Lot 17, Block 6, Burns Subdivision as filed in the Mesa County Clerk and Recorder's office, Book 7, Page 63; thence N 57°04'W 64.11 feet; thence N 73°53'W 51.96 feet; thence S 83°11'W 50.28 feet; thence N 78°36'W 50.92 feet; thence N 75°30'W 61.87 feet; thence N 76°24'W 61.6 feet; S 87°02'W 60.0 feet; thence S 68°18'W 53.73 feet; thence S 81°41'W 87.0 feet; thence N 71°06'W 146.8 feet; thence N 03°36'E 68.9 feet; thence N 11°29'E 51.02 feet; thence N 05°32'W 50.23 feet; thence N 00°10'E 50.0 feet; thence N 16°32'W 52.16 feet; thence S 70°18'E 178.00 feet; thence S 55°03'E 42.77 feet; thence N 14°12'E 50.93 feet; thence S 86°45'E 418.73 feet; thence South 163.2 feet to the place of beginning, said tract comprising the same area as covered by Lots 8 to 17 inclusive of Block 6 and Lots 2 to 8 inclusive of Block 7, Burns Subdivision as filed in Plat Book 7, Page 63 in the office of the Mesa County Clerk and Recorder.

That said A. L. Arbuckle, Asunta L. Arbuckle and M. B. SeEVERS have caused the said real property to be replatted as REPLAT OF BLOCK 7 EXCEPT LOT 1 AND LOTS 8 TO 17 INCLUSIVE, BLOCK 6, BURNS SUBDIVISION, a subdivision of a part of the County of Mesa;

That said A. L. Arbuckle, Asunta L. Arbuckle and M. B. SeEVERS hereby dedicate the street designated as Relocation -- Burns Drive and the road designated as Half of Future 30 Road to the public forever.

That all expenses involving necessary improvements for a water system, sanitary sewer system, gas service, electrical service, grading and landscaping, storm sewer system, curbs and gutters, street pavement and sidewalks shall be financed by the purchaser or seller --- not the County of Mesa.

IN WITNESS WHEREOF, said A. L. Arbuckle, Asunta L. Arbuckle, and M. B. SeEVERS have caused their names to be hereunto subscribed this \_\_\_\_\_ day of \_\_\_\_\_ A. D. 195\_\_

*A. L. Arbuckle*  
A. L. Arbuckle  
*Asunta L. Arbuckle*  
Asunta L. Arbuckle  
*M. B. SeEVERS*  
M. B. SeEVERS

STATE OF COLORADO } SS  
COUNTY OF MESA }

The foregoing instrument was acknowledged before me this 6th day of June A. D. 1952 by A. L. Arbuckle, Asunta L. Arbuckle, and M. B. SeEVERS.

My commission expires Sept 2, 1957  
Witness my hand and official seal.

*Henry J. Zupper*  
Notary Public

CLERK AND RECORDER'S CERTIFICATE

721565

STATE OF COLORADO } SS  
COUNTY OF MESA }

I hereby certify that this instrument was filed in my office at 10:40 o'clock A. M., June 13 A. D. 1952 and is duly recorded in Plat Book No. 9, Page 45

*Charles M. Timmons*  
Recorder

Fees \$ 6.00

By: \_\_\_\_\_  
Deputy

COUNTY PLANNING COMMISSION CERTIFICATE

Approved this 29th day of May, A. D. 1958  
County Planning Commission of the County of Mesa, Colorado.

By: *C. Linsley*  
Chairman

BOARD OF COUNTY COMMISSIONERS CERTIFICATE

Approved this 9th day of June, A. D. 1958.  
Board of County Commissioners of the County of Mesa.

By: *Henry J. Zupper*  
Chairman

SURVEYOR'S CERTIFICATE

I, Richard J. Mandeville do hereby certify that the accompanying REPLAT OF BLOCK 7 EXCEPT LOT 1 AND LOTS 8 TO 17 INCLUSIVE OF BLOCK 6, BURNS SUBDIVISION, a subdivision of a part of the County of Mesa, has been prepared under my direction in accordance with data shown on the original plat as filed with the Mesa County Clerk and Recorder in Plat Book 7 Page 63.

*Richard J. Mandeville*  
Registered Engineer & Land Surveyor

APPROVAL OF VACATION

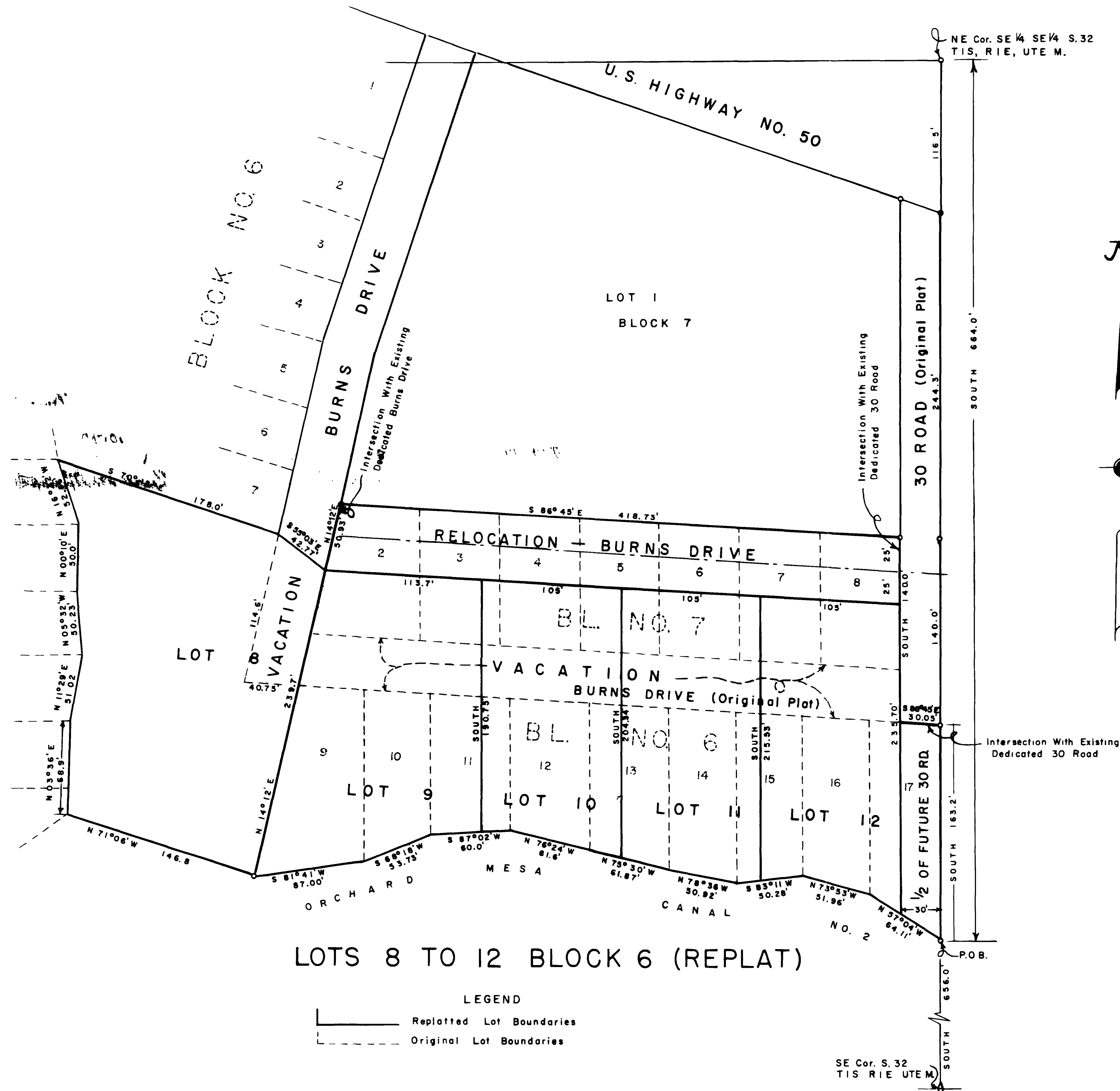
Due to the convenience and access needs of the public being adequately served by the replatting of land and public rights-of-way as shown hereon, the vacation of certain other portions of the public road rights-of-way as shown hereon is this date approved.

Approved this 9th day of June  
A. D. 1958. Board of County Commissioners of the County of Mesa.

By: *Henry J. Zupper*  
Chairman

SCALE 1" = 50'

WESTERN ENGINEERS  
REPLAT  
BL.7 EXC. LOT 1 & LOTS 8-17 INC.  
OF BLOCK 6 - BURNS SUBD.  
MESA COUNTY, COLORADO  
DRAWN *F. B. F.*  
GRAND JUNCTION, COLO. DWG. 2-75-2 6/2/58



LOTS 8 TO 12 BLOCK 6 (REPLAT)

LEGEND  
 — Replatted Lot Boundaries  
 - - - Original Lot Boundaries

SE Cor. S. 32  
T. 1 S. R. 1 E. UTE M.

