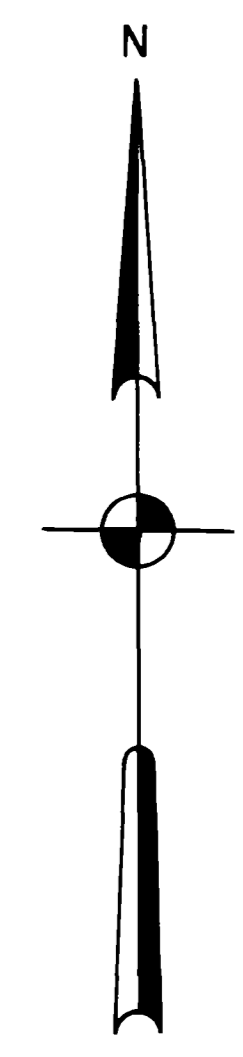
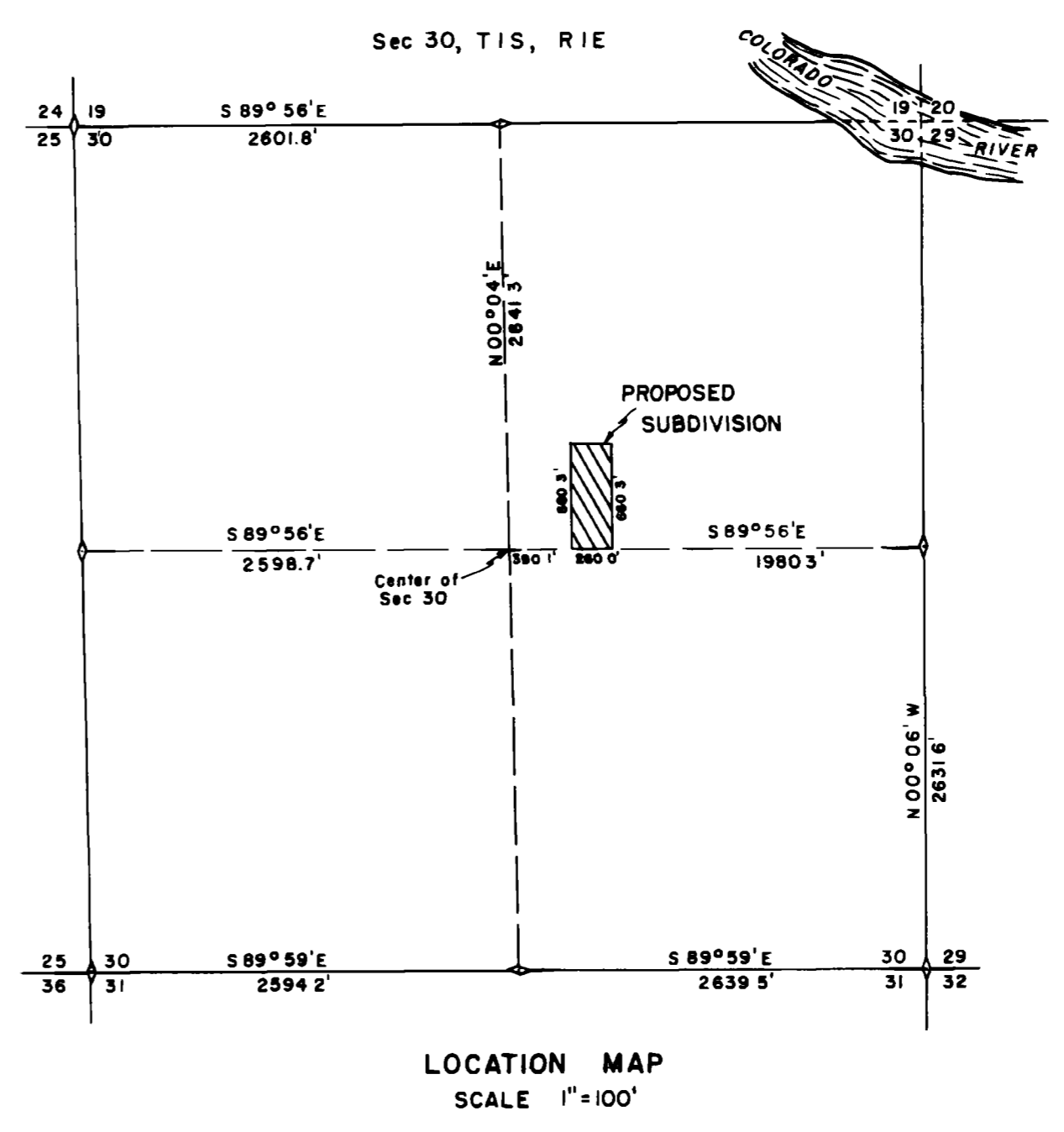
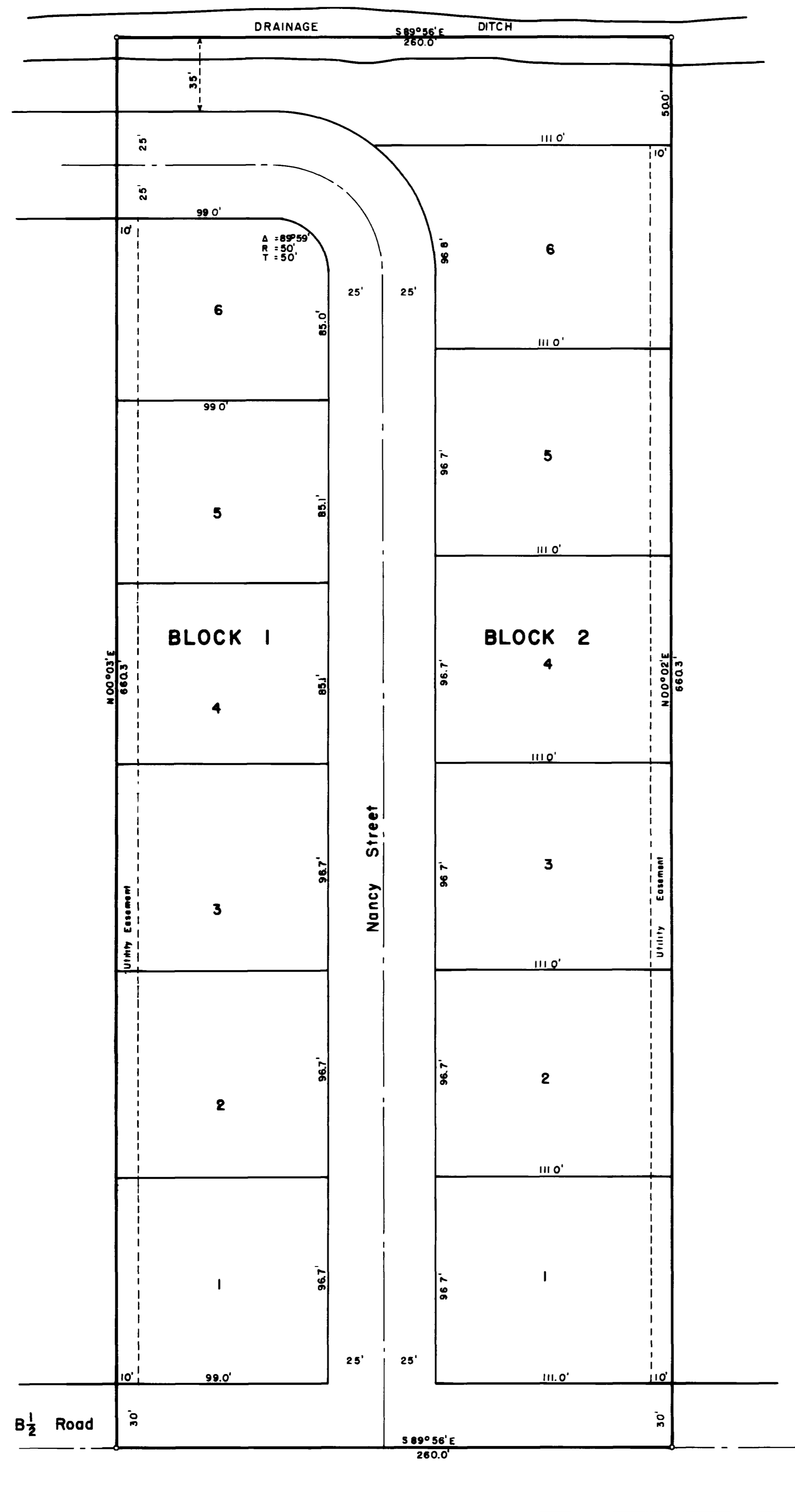


DAVIS SUBDIVISION

651446

STATE OF COLORADO)
 COUNTY OF MESA)
 I hereby certify that this instrument was
 filed for record
 OCT 26 1955
 M. J. ...
 MESA COUNTY CLERK & RECORDER



STATE OF COLORADO)
 COUNTY OF MESA)

Know all men by these presents: That the undersigned, Howard H Davis and Neva R Davis, owners of the following described land as shown upon this map, which is situate in Mesa County, Colorado, to wit Beginning at a point which is S 89°56'E 390.1 feet from the center of Sec 30, T1S, R1E of the Ute Principal Meridian; thence S 89°56'E 260.0 feet; thence N 00°02'E 660.3 feet; thence N 89°56'W 260.0 feet; thence S 00°03'W 660.3 feet to the place of beginning

The above described tract of land is a portion of the tract formerly described as Lot 13 of the Grand Junction-Orchard Mesa Land Company's Orchard Subdivision

The undersigned have caused to be laid out and platted and by these presents do layout and plat said tract of land as shown upon this plat into Lots, Blocks, Streets, Lanes and Utility Easements, under the name of Davis Subdivision

The undersigned do hereby dedicate to the use of the public now and forever all streets, lanes and Utility Easements as shown on this plat.

In witness whereof the undersigned have set their hand and seal

Signed Howard H. Davis
 Signed Neva R. Davis

Approved on 25 October, 1955, by Mesa County Planning Commission

Ray Robinson
 Chairman

Approved on 10/25, 1955, by Mesa County Board of Commissioners.

Henry J. Jaffer
 Chairman

STATE OF COLORADO)
 COUNTY OF MESA)

I, Davis C Holder, hereby certify that this map is a true and correct plat of the land described hereon and the Subdivision thereof, and is based on the field notes of an actual survey made under my supervision in September of 1955.

Signed Davis C. Holder
 Reg Land Surveyor No 1833



0 10 20 30 40 50 60 70 80 90 100
 SCALE 1" = 40'

State of Colorado)
 County of Mesa)

The foregoing instrument was acknowledged before me this 17 day of Oct, 1955, by Howard H Davis and Neva R. Davis
 Witness my hand and official seal

William R. Day
 Notary Public



My commission expires May 12, 1956

DAVIS SUBDIVISION		
MESA COUNTY, COLORADO		
HOLDER ENGINEERING SERVICE		
SURVEYED	<u>F.R.R.</u>	
DRAWN	<u>B.C.H.</u>	
TRACED	<u>R.M.C.</u>	
GRAND JUNCTION, COLO.	4-14-3	October 9, 1955