

STATE OF COLORADO  
County of MESA  
I hereby certify that this instrument was  
Filed for record

Sept 6 1946  
10 15 A  
7 17

E. R.  
E. R.

# WEEMS GARDENS

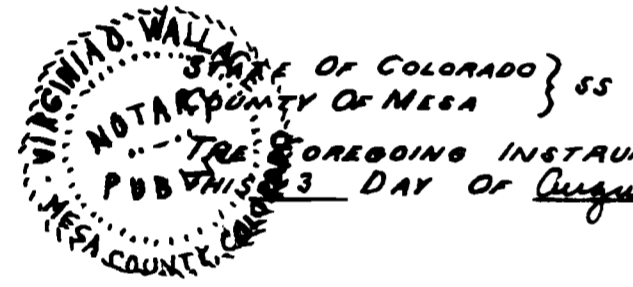
MESA COUNTY, COLORADO

## DEDICATION

KNOW ALL MEN BY THESE PRESENTS: THAT THE UNDERSIGNED LAVERGE E. COOLEY WEEMS, FORMERLY LAVERGE E. COOLEY, BEING THE OWNER OF THE FOLLOWING DESCRIBED LAND IN MESA COUNTY, COLORADO, TO WIT: BEGINNING AT THE W 1/4 CORNER OF SECTION 29, TOWNSHIP 1 SOUTH, RANGE 1 EAST, UTE MERIDIAN, THENCE EAST 187 FEET, NORTH 177 FEET, EAST 76 FEET, SOUTH 177 FEET, EAST 397 FEET, NORTH 660 FEET, WEST 660 FEET, SOUTH 660 FEET TO THE POINT OF BEGINNING. ALL OF THIS LAND BEING IN THE SW 1/4 SW 1/4 NW 1/4 OF SAID SECTION 29 TO BE KNOWN AS "WEEMS GARDENS"; AND DO HEREBY DEDICATE ALL STREETS, AVENUES, AND ALLEYS INDICATED ON THIS PLAT TO THE USE OF THE PUBLIC FOREVER.

(23)  
WITNESS MY HAND AND SEAL THIS 23 DAY OF Aug. 1946

Laverge E. Cooley Weems  
FORMERLY Laverge E. Cooley



THE FOREGOING INSTRUMENT WAS ACKNOWLEDGED BEFORE ME PUBLISHED 3 DAY OF August 1946 BY LAVERGE E. COOLEY WEEMS FORMERLY LAVERGE E. COOLEY

Virginia O. Wallace  
NOTARY PUBLIC

MY COMMISSION EXPIRES March 12, 1950

APPROVED: Aug. 33 1946

MESA COUNTY PLANNING COMMISSION

Chairman  
CHAIRMAN

THIS PLAT OF "WEEMS GARDENS" IS ACCEPTED FOR FILING SUBJECT TO THE OBLIGATION TO MAINTAIN ONLY EXISTING COUNTY HIGHWAYS SHOWN HEREON.  
MESA COUNTY BOARD OF COUNTY COMMISSIONERS

DATED: August 26-1946

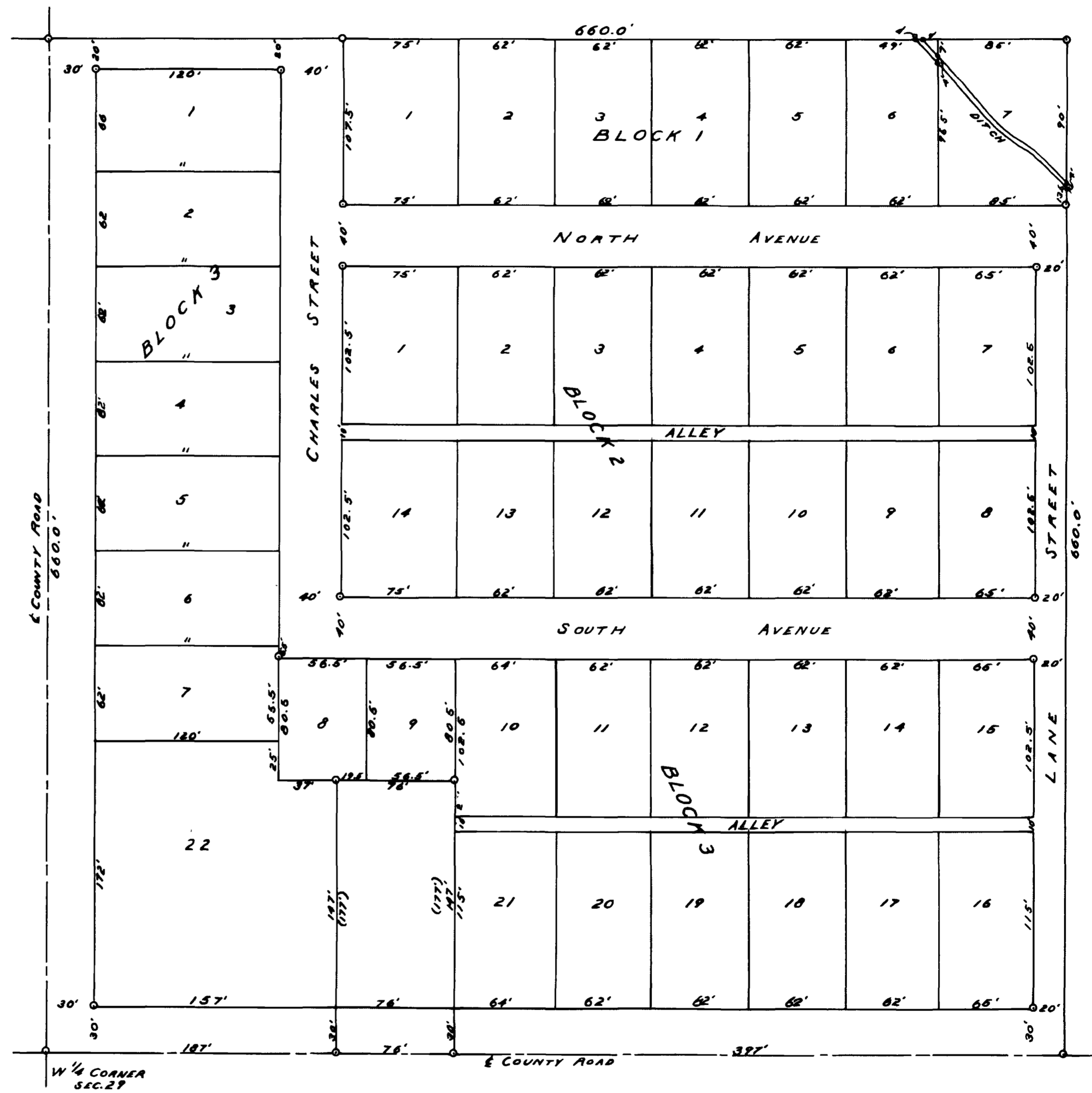
Attest  
Deputy County Clerk  
Deputy County Clerk  
Deputy County Clerk



I HEREBY CERTIFY THAT THE ABOVE DESCRIBED TRACT OF LAND WAS SURVEYED AND PLATTED BY ME AND THAT THIS IS A TRUE AND CORRECT PLAT OF SAID LAND AND THE SUBDIVISION THERE OF.  
DATED AT GRAND JUNCTION, COLORADO AUGUST 21, 1946

Frank R. Mattison  
COUNTY SURVEYOR

BY: Erin E. Waulter  
DEPUTY COUNTY SURVEYOR



SCALE - 1" = 60'