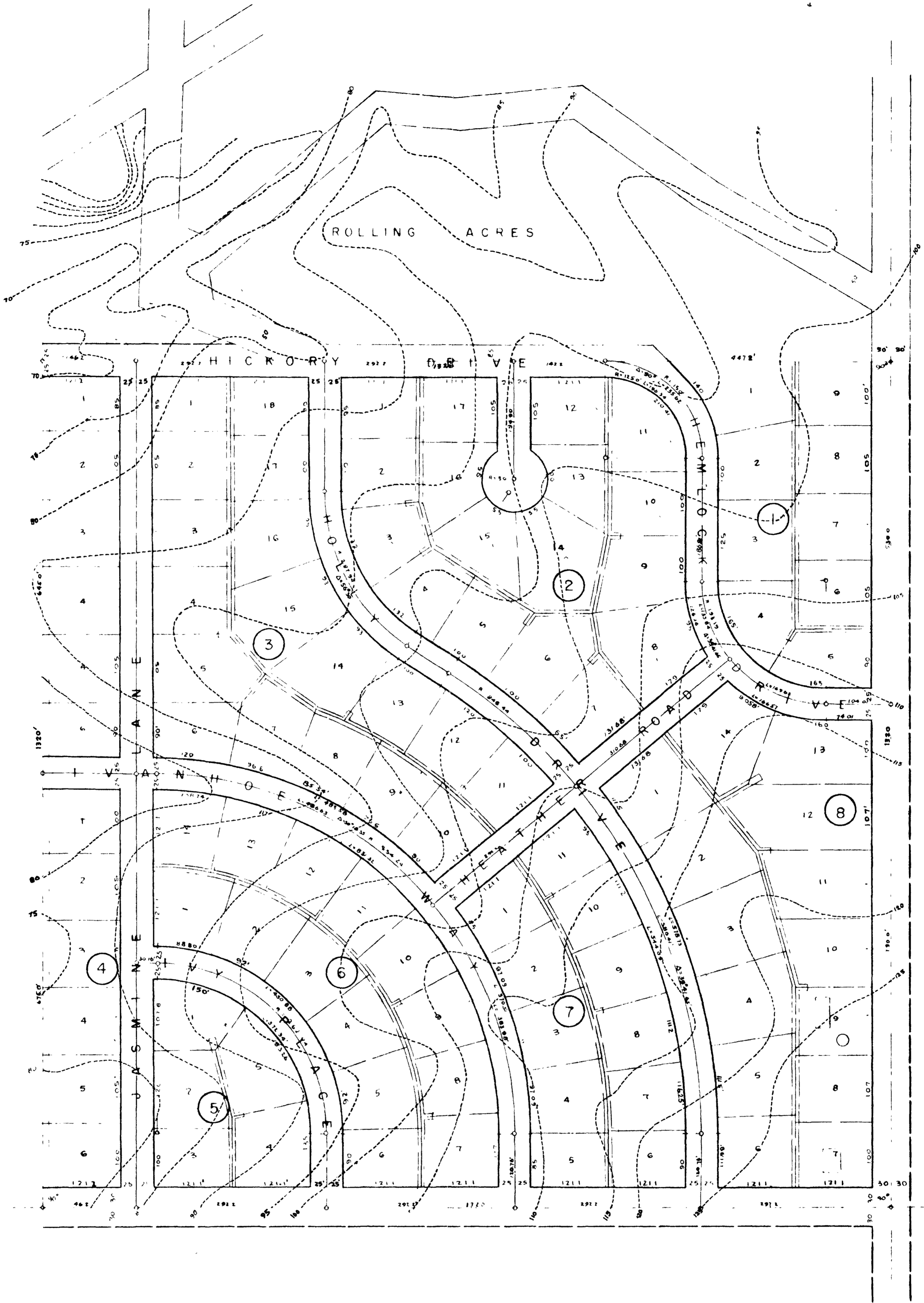


JUL 1 1955
4:30 P 31

6.05



KNOW ALL MEN BY THESE PRESENTS that Holly Builders, Inc, a Colorado Corporation, being the owner of the following tract SE ¼ of SW ¼ of Sec 35, T1N, R1W, Ute Principal Meridian, Mesa County, Colorado, has laid out, platted and subdivided said lands under the name and style of SUNSET TERRACE and by these presents does dedicate the public the streets, avenues and other public places as shown and not otherwise already dedicated for public use, also public utility easements as shown



Witness our hands and seals this 28th day of June, 1955 A.D.
Holly Builders Inc., a Corporation

By E. L. Potarf
E. L. Potarf, President

By O. E. Watson
O. E. Watson, Secretary

The foregoing instrument was acknowledged before me this 28th day of June, 1955 A.D., by E. L. Potarf and O. E. Watson, officers of Holly Builders Inc

Witness my hand and seal Cecilia S. Arkins
Notary Public

My commission expires April 14, 1956



Approved by the Mesa County Planning Commission

By Roy Hamilton - CHAIRMAN -

Approved by the Mesa County Board of County Commissioners

By Henry J. Zupper

I hereby certify that this is a true and correct plat of survey of the above described land and of the subdivision of the same

Roy L. George
Roy L. George, Reg Surveyor

