

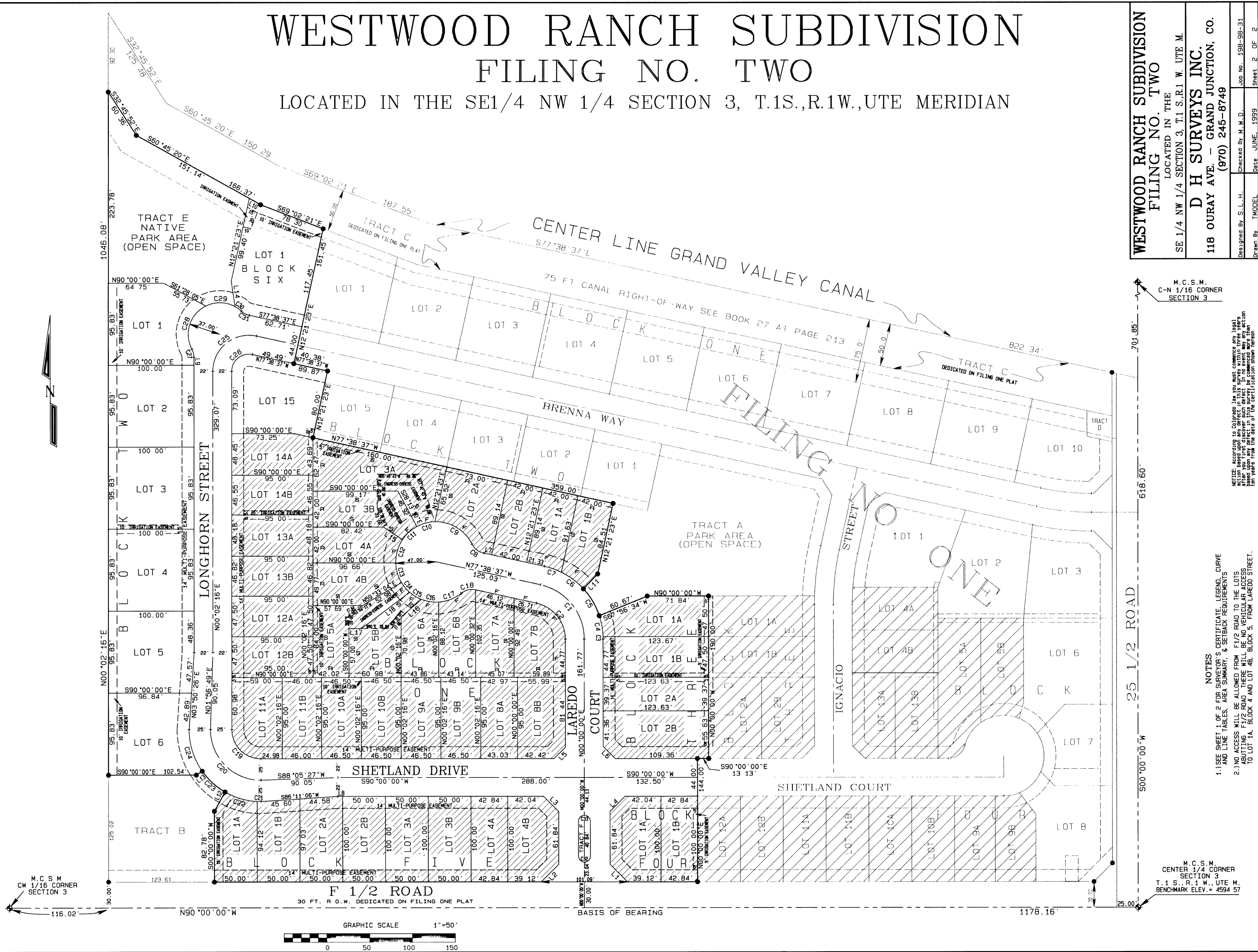


# WESTWOOD RANCH SUBDIVISION FILING NO. TWO

LOCATED IN THE SE1/4 NW 1/4 SECTION 3, T.1S.,R.1W.,UTE MERIDIAN

**WESTWOOD RANCH SUBDIVISION  
FILING NO. TWO**  
 LOCATED IN THE  
 SE 1/4 NW 1/4 SECTION 3, T.1 S.,R.1 W. UTE M.  
**D H SURVEYS INC.**  
 118 OURAY AVE. - GRAND JUNCTION, CO.  
 (970) 245-8749

Designed By: S. L. H.      Checked By: M. W. D.      Job No. 198-98-31  
 Drawn By: T. MODEL      Date: JUNE, 1999      Sheet: 2 OF 2



NOTICE: According to Colorado law, you must examine any legal instrument before you sign it. If you find a defect in the instrument, you must file a notice of objection with the clerk of the court within ten days from the date of the certification shown herein.

- NOTES**
- SEE SHEET 1 OF 2 FOR SURVEYOR'S CERTIFICATE, LEGEND, CURVE AND LINE TABLES, AREA SUMMARY, & SETBACK REQUIREMENTS
  - NO ACCESS WILL BE ALLOWED FROM F1/2 ROAD TO THE LOTS ABUTTING F1/2 ROAD. THERE WILL BE NO VEHICULAR ACCESS TO LOT 1A, BLOCK 4 AND LOT 4B, BLOCK 5, FROM LAREDO STREET.

M. C. S. M.  
 CENTER 1/4 CORNER  
 SECTION 3  
 T. 1 S., R. 1 W., UTE M.  
 BENCHMARK ELEV. = 4594.57