

WINTERGREEN ESTATES

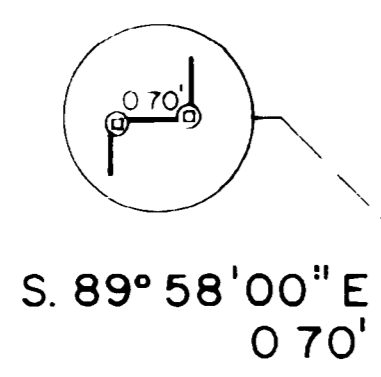
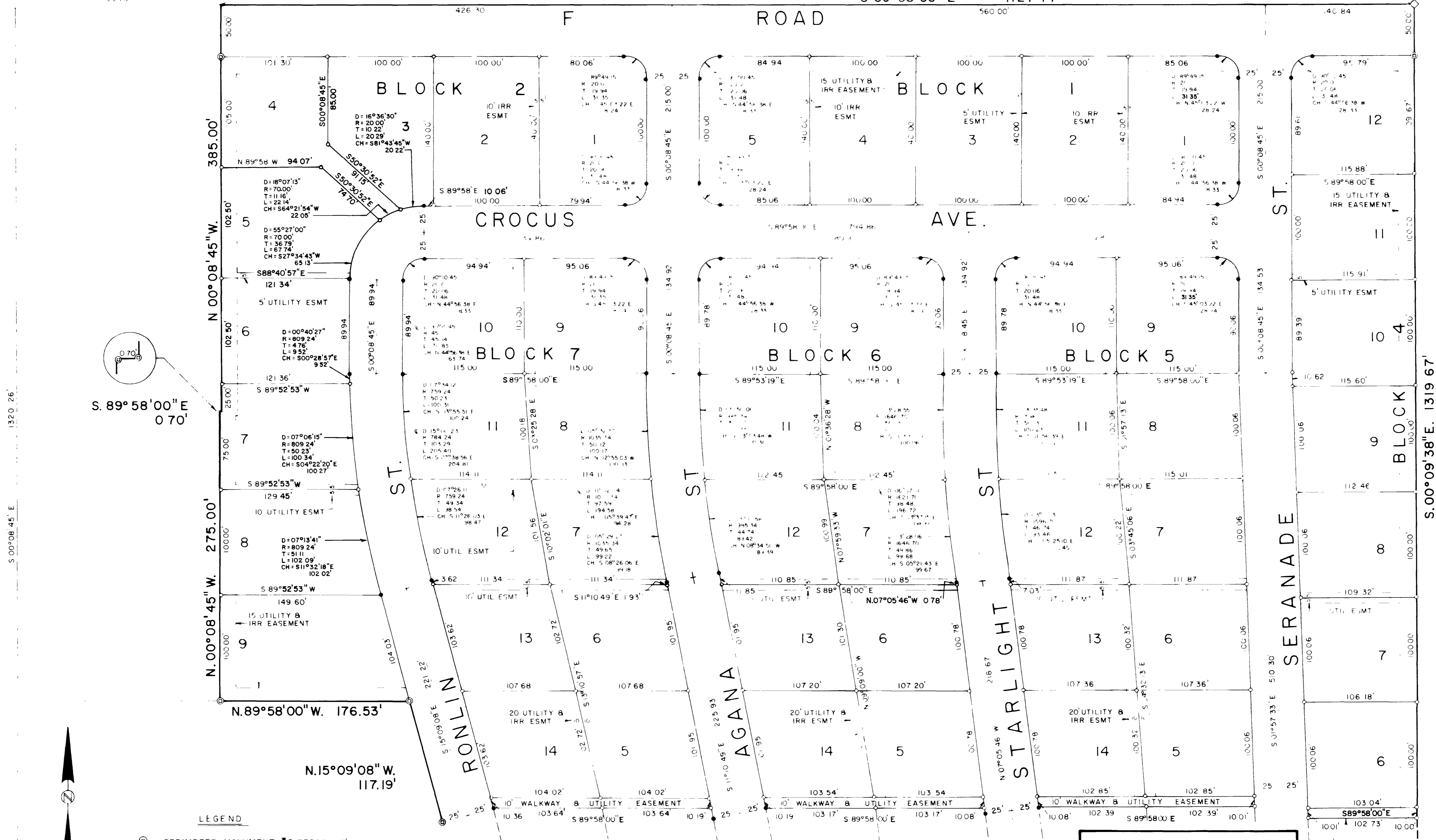
N.W. COR. SEC. 9
T15S, R12E, JTE. MER.

93.70'

S 89°58'00"E 1320.84' (BEARING SOURCE KEECH SUBDIVISION)

S 89°58'00"E 1127.14'

NE COR. NW⁴NW⁴



S 00°08'45"E 1320.26'

S 00°08'45"E

SW COR. NW⁴NW⁴

- LEGEND**
- ⊙ - PERIMETER MONUMENT "5 REBAR x 3' W/ALLOY CAP SET IN CONCRETE
 - - BLOCK CORNER "5 REBAR x 3' W/ALLOY CAP
 - - LOT CORNER "5 REBAR x 2' W/PLASTIC CAP
 - ◇ - FOUND MESA COUNTY SURVEY MONUMENT
 - D - DENOTES DELTA ANGLE IN CURVE DATA

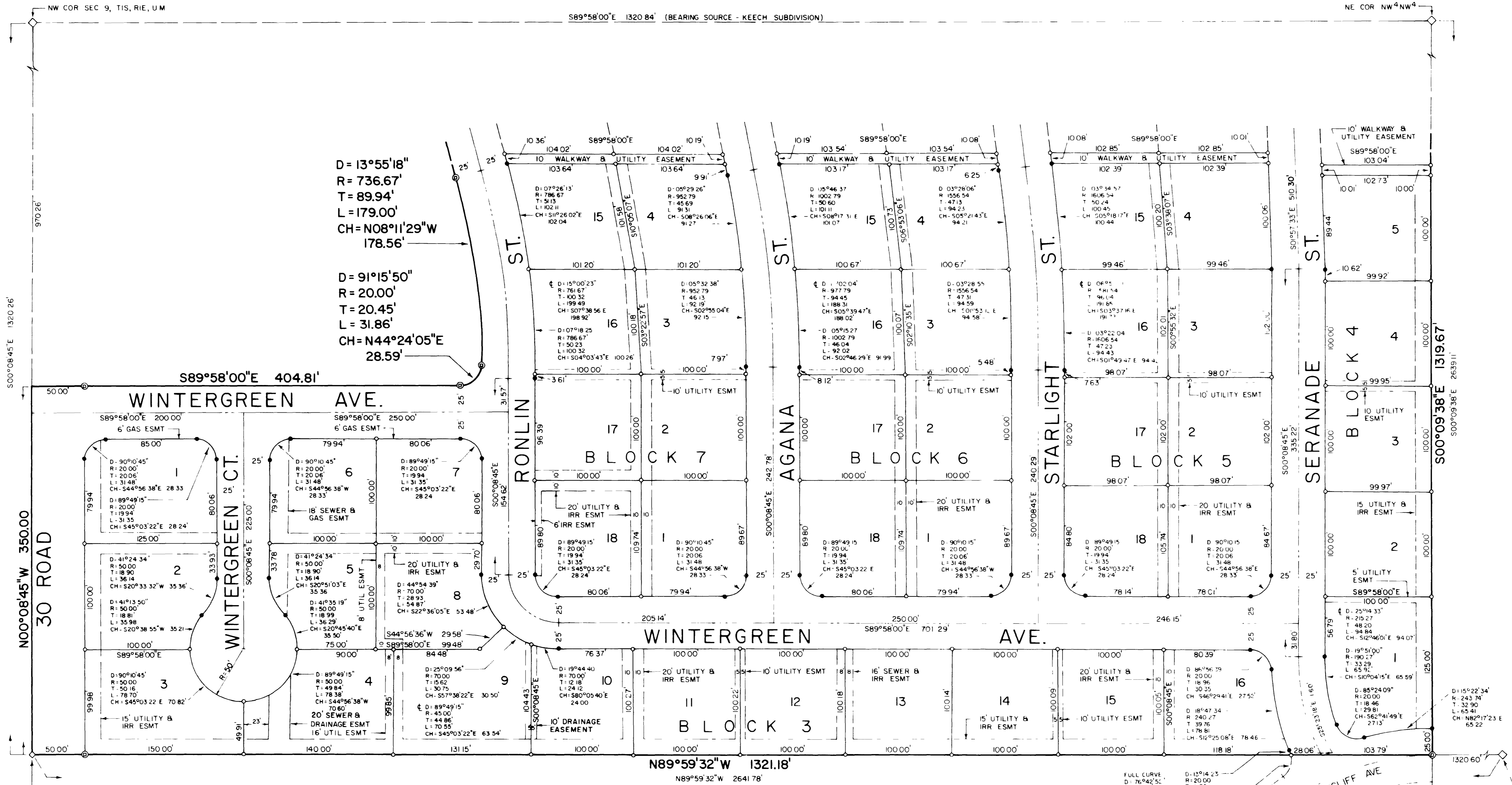
WINTERGREEN ESTATES

AND
C & M
SURVEYORS & ENGINEERS
INC.

FILE 78-03-07 JUNE 19, 1978
SHEET 2/3

Book 128961

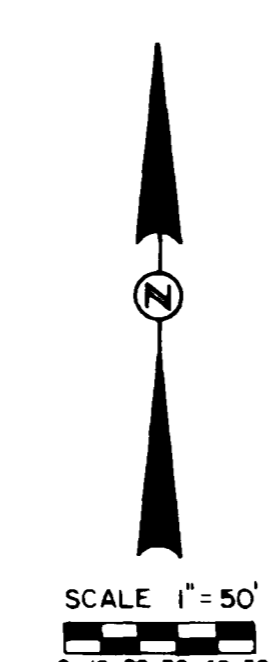
WINTERGREEN ESTATES



$D = 13^{\circ}55'18''$
 $R = 736.67'$
 $T = 89.94'$
 $CH = N08^{\circ}11'29''W$
 $178.56'$

$D = 91^{\circ}15'50''$
 $R = 20.00'$
 $T = 20.45'$
 $L = 31.86'$
 $CH = N44^{\circ}24'05''E$
 $28.59'$

- LEGEND**
- ⊙ - PERIMETER MONUMENT #5 REBAR x 3' w/ALLOY CAP, SET IN CONCRETE
 - - BLOCK CORNER #5 REBAR x 3' w/ALLOY CAP
 - - LOT CORNER #5 REBAR x 2' w/PLASTIC CAP
 - ◇ - FOUND MESA COUNTY SURVEY MONUMENT
 - D - DENOTES DELTA ANGLE IN CURVE DATA



WINTERGREEN ESTATES

C AND M
SURVEYORS AND ENGINEERS
INC.

FILE. 78-03-07 JUNE 19, 1978
SHEET 3/3

Book 12 p 62