

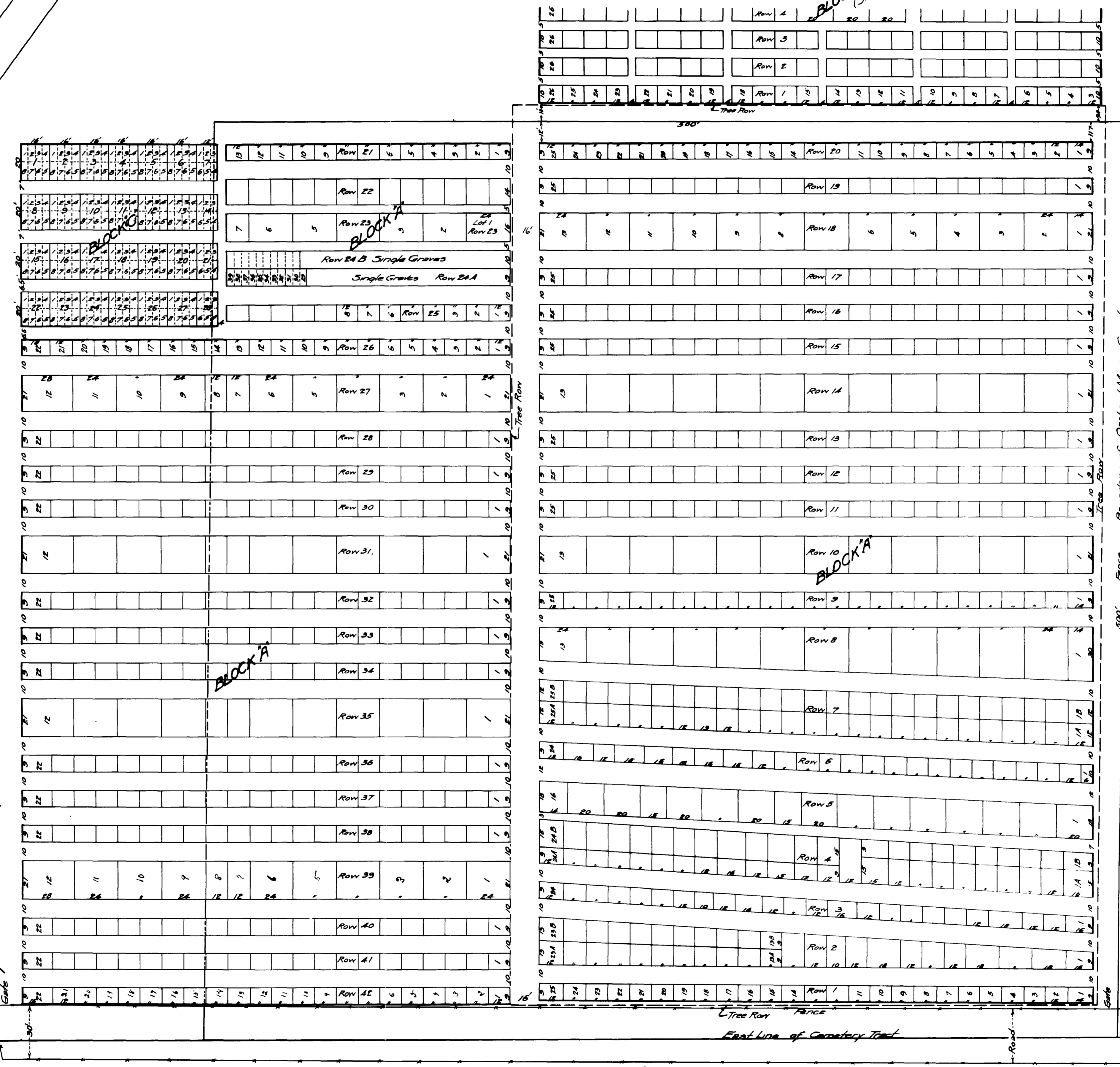
To Reservoir

BLOCK 'B'  
(See Page 5 - opposite)

188421  
Subdivided, 1 ss.  
County of Mesa, Ariz.  
The instrument that this instrument  
was filed for record MAY 11 1923  
at 10:02 o'clock P.M. and recorded  
in Book 5 Page 556.  
By J. GALLUPE, RECORDER  
Deputy.

D.S.  
CITY OF GRAND JUNCTION  
MAP SHOWING  
ORIGINAL PLAT OF  
ORCHARD MESA CEMETERY  
AND  
LATER EXTENSIONS  
GRAND JUNCTION, COLO. MAY, 1923.  
SCALE: 1" = 30'

J. E. Thompson  
City Engineer.

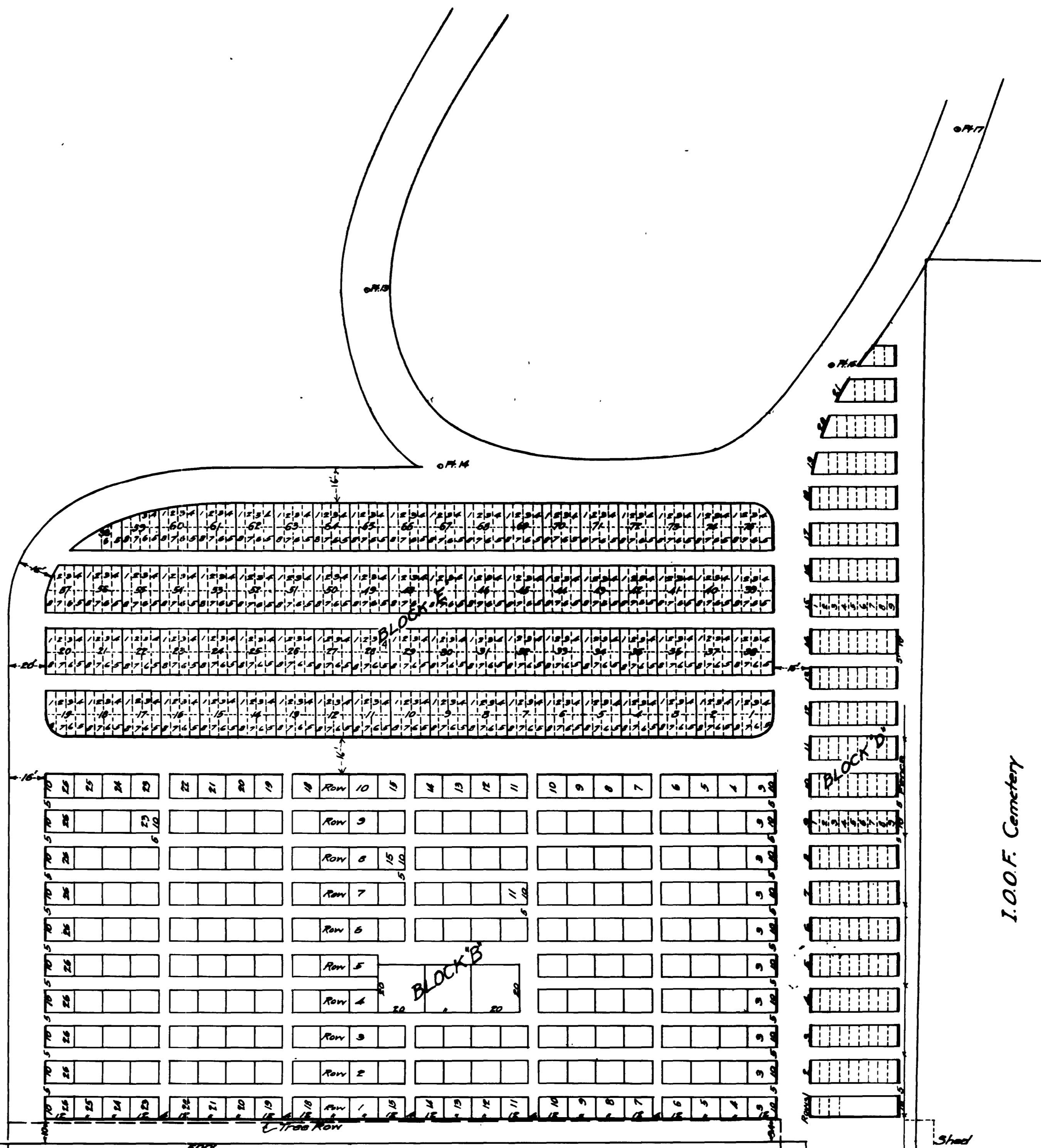
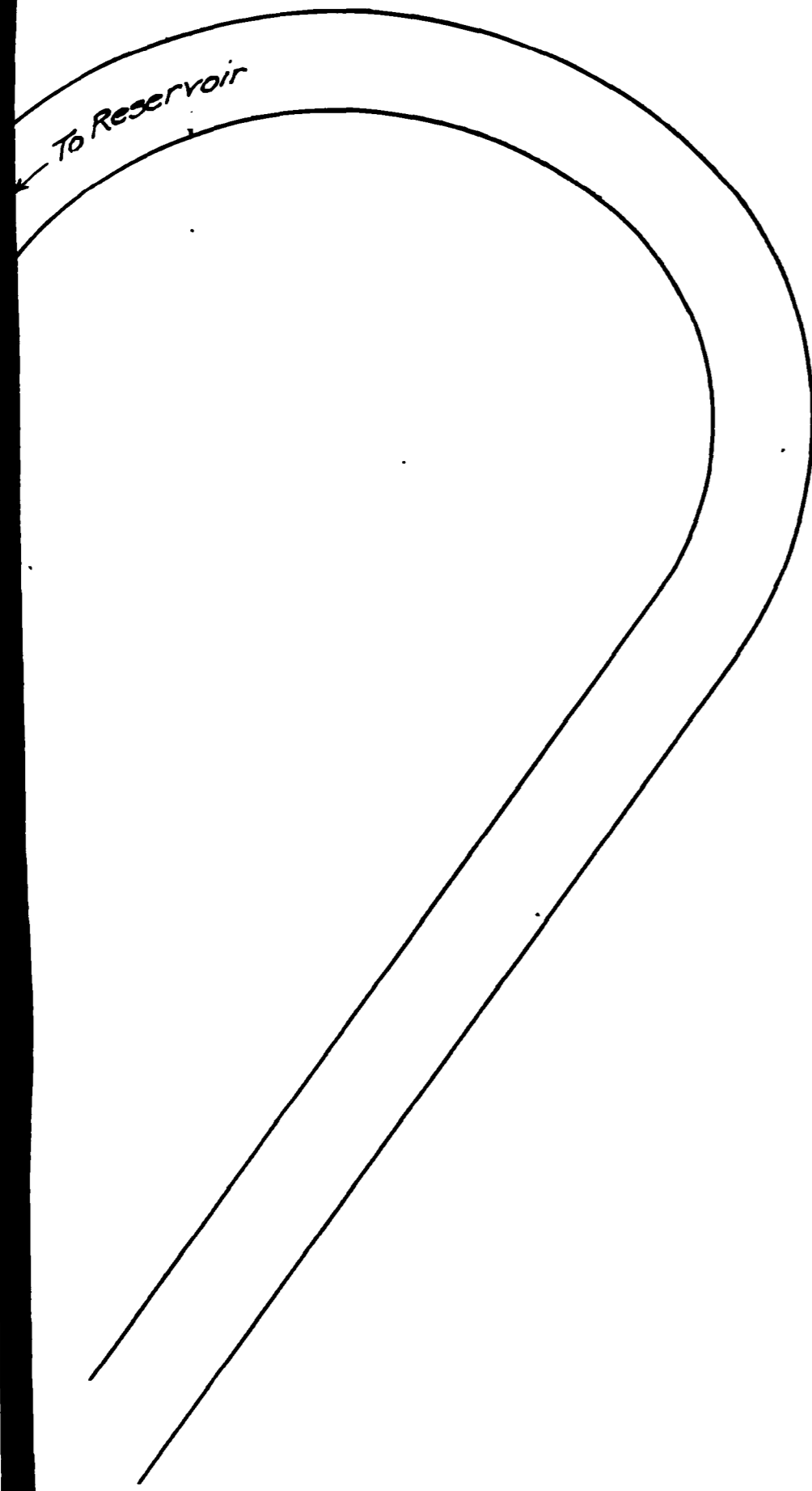


House

Boundary of Orchard Mesa Cemetery

Masonic Cemetery

Tree Row  
Fence  
East Line of Cemetery Tract



I.O.O.F. Cemetery

B-5 P-5

87A

B-5-P-5