

PRINCESS PARK

DEDICATION

KNOW ALL MEN BY THESE PRESENTS

That the undersigned James A Covey is the owner of that real property situated in the County of Mesa State of Colorado and lying in the NW 1/4 of Section 3, Township 1 South, Range 1 East of the Ute Meridian, as shown by the accompanying plat thereof, said tract being more specifically described by metes and bounds as follows.

Beginning at the West 1/4 Corner of Section 3, Township 1 South, Range 1 East of the Ute Meridian, thence East 440.0 feet, thence N 00° 07' W 530.06 feet, thence N 84° 25' W 92.83 feet, thence N 69° 29' W 110.64 feet, thence N 73° 07' W 255.24 feet, thence S 00° 07' E 652.0 feet to the point of beginning

That the said owner has caused the said real property to be laid out and surveyed as Princess Park, a subdivision of a part of the County of Mesa.

That the owner does hereby dedicate and set apart all of the streets and road as shown on the accompanying plat to the use of the public forever and hereby dedicate those portions of said real property which are labeled as utility easements on the accompanying plat as easement for the installation and maintenance of such utilities as telephone and electric lines poles and cables, storm and sanitary sewer mains, water mains, gas pipelines, and those portions of said real property which are labeled as irrigation easements on the accompanying plat as easements for the installation and maintenance of irrigation ditches, flumes and conduits,

That all expenses for installation of utilities or ditches referred to above, for grading or landscaping and for street graveling or improvements shall be financed by the seller or purchaser--not the County of Mesa

IN WITNESS WHEREOF, said James A Covey has caused his name to be hereunto subscribed this 15 day of July A D 1968.

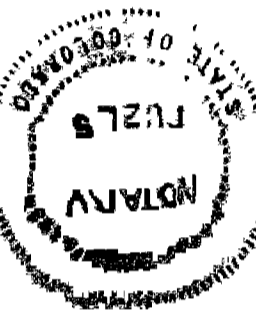
James A. Covey

STATE OF COLORADO }
COUNTY OF MESA }

The foregoing instrument was acknowledged before me this 15 day of July A D 1968 by James A Covey My Commission expires November 18, 1970

Witness my hand and official seal

J. G. Chapin
Notary Public



CLERK AND RECORDER'S CERTIFICATE

STATE OF COLORADO }
COUNTY OF MESA }

I hereby certify that this instrument was filed in my office at 3:15 o'clock P. M. July 15 A D 1968, Page 60 Book 10

Ann M. Duveton
Clerk and Recorder
By *Doris J. Loman*
Deputy

COUNTY PLANNING COMMISSION CERTIFICATE

Approved this 11th day of June A D 1968
County Planning Commission of the County of Mesa, Colorado

Orville E. Jensen
Chairman

BOARD OF COUNTY COMMISSIONER'S CERTIFICATE

Approved this 4th day of July A D 1968
Board of County Commissioners of the County of Mesa, Colorado

Edwin J. Loman
Chairman

SURVEYOR'S CERTIFICATE

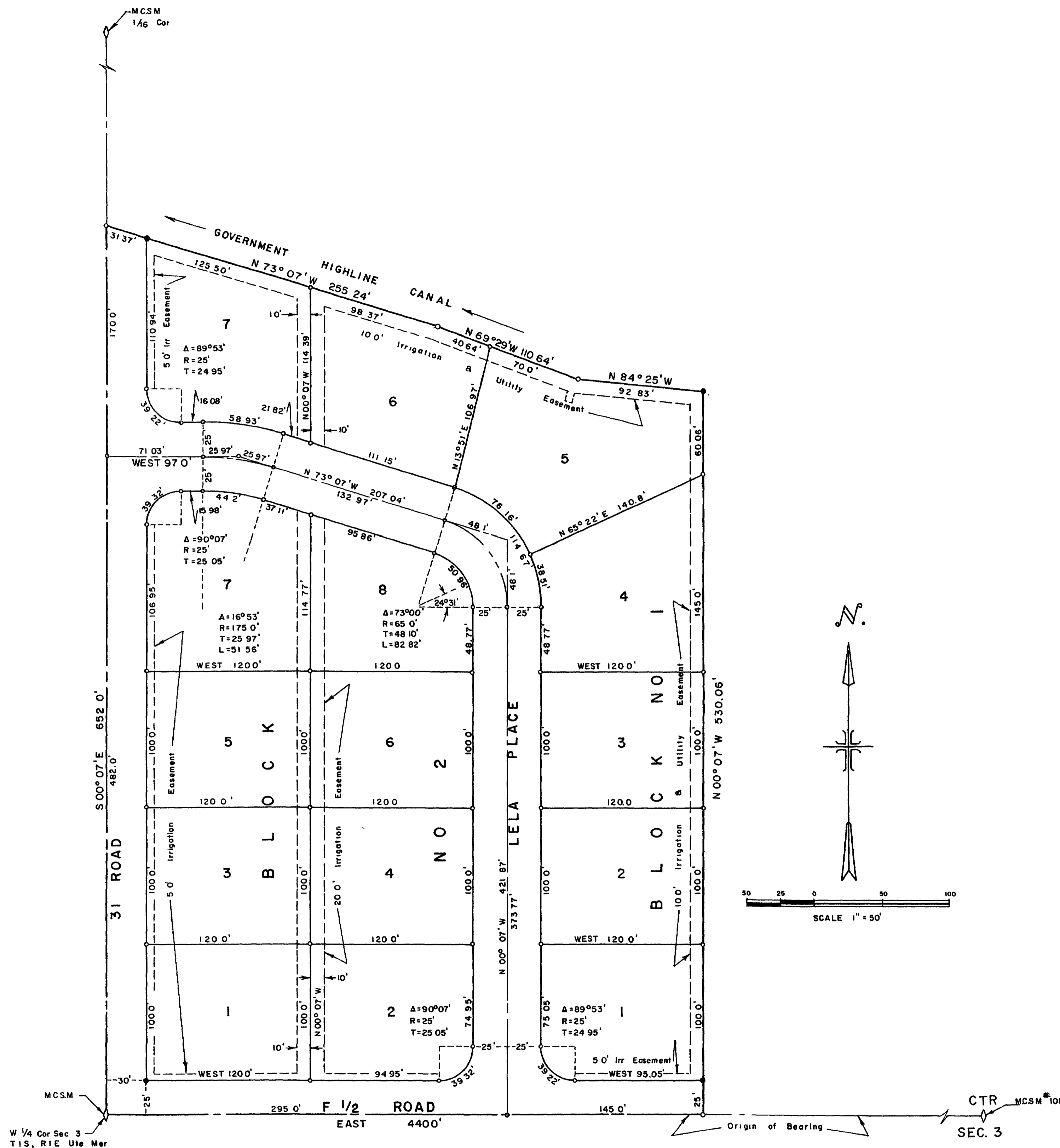
I, Clarence J. Bielak do hereby certify that the accompanying plat of Princess Park, a subdivision of a part of the County of Mesa has been prepared under my direction and accurately represents a field survey of same

Clarence J. Bielak
Registered Land Surveyor



APPROVED FOR CONTENT AND FORM ONLY AND NOT TO THE ACCURACY OF SURVEYS, CALCULATIONS OR DRAFTING. PURSUANT TO C.R.S. 1963, 136-2-2 AS AMENDED.

By: *Robert C. Hub* Date: 7-5-68
Mesa County Surveyor



LEGEND

- Steel pins
- Steel pins set in concrete

WESTERN ENGINEERS, INC
PLAT OF
PRINCESS PARK
SUBDIVISION
MESA COUNTY, COLORADO

SURVEYED BY *C. J. Hub* DRAWN *C. J. Hub* TRACED *C. J. Hub*

GRAND JUNCTION, COLO 1-483-2 5/31/68