

C. Mac Dye, hereby certify that this is a true and correct plat of survey of the land described herein and the subdivision thereof.

C. Mac Dye
Engineer

Final Plat

MONTGOMERY
ADDITION

NW1/4 SW1/4 SW1/4

Sec. 25 T.1S. R.1W.

Mesa County - Colorado

Jack Montgomery, Gateway-Subdivider

C. Mac Dye, Engineer

April 13, 1955

KNOW ALL MEN BY THESE PRESENTS:
That Jack Montgomery, being owner of the following described land, beginning at the SW corner, a point 660' north of the common corner of Secs. 25, 26, 35 and 36, T.1S., R.1W., thence east 660' to the SE corner, thence 660' north to the NE corner, thence west 660' to the NW corner, thence south 660' to the point of beginning, has caused to be made Montgomery Addition of said land and does hereby dedicate the roads, drives and alleys as shown hereon to the use of the public forever.

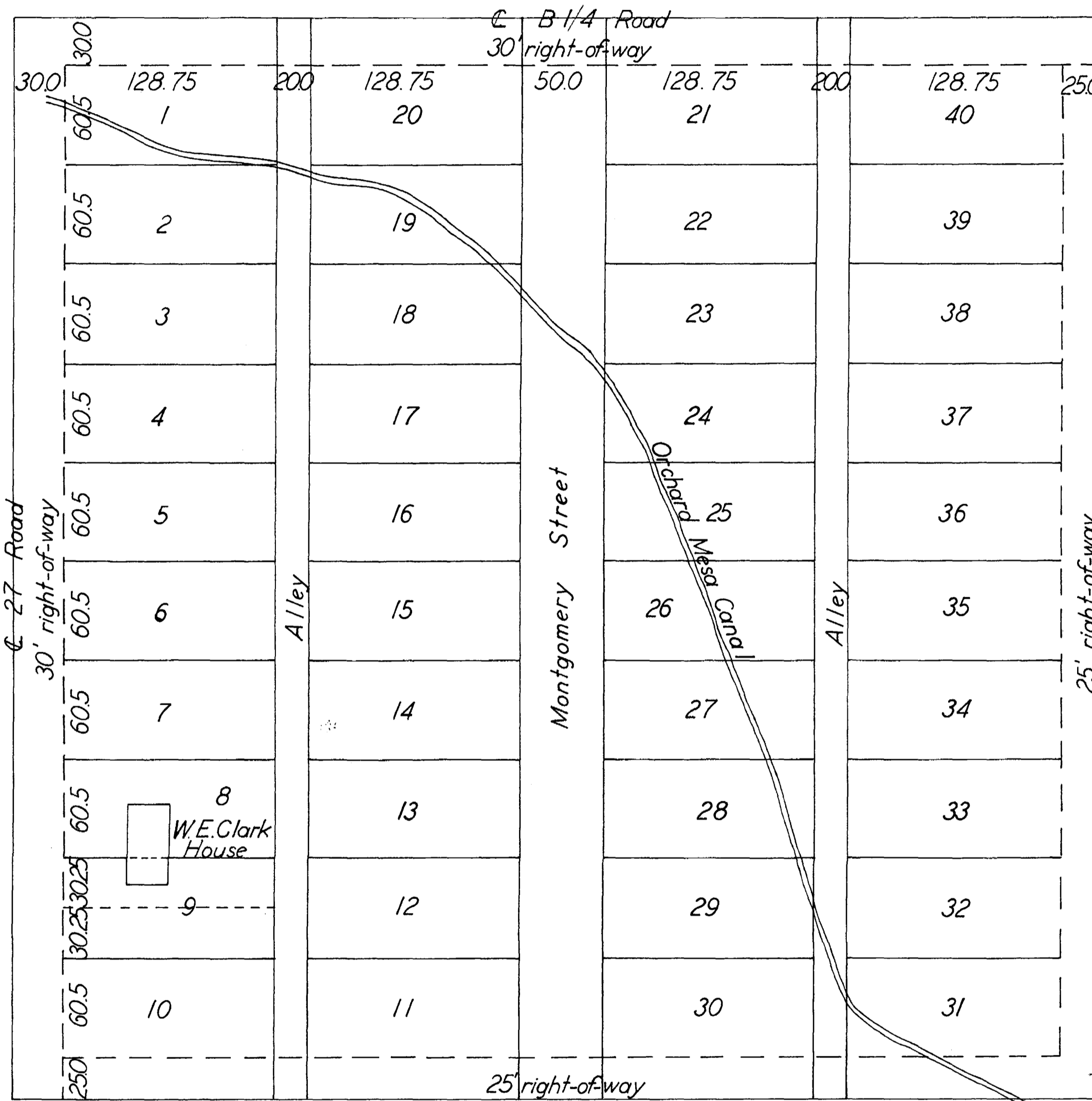
STATE OF COLORADO)
County of Mesa) SS

Jack Montgomery

The foregoing instrument was acknowledged before me this 8th day of August 1955 by Jack Montgomery.

My commission expires January 6, 1959

L.M. Finnessey
Notary Public



Scale - 1" = 60'

Lot size - 60.5' x 128.75'

Lot area - 7789.375 sq. ft.

Lots 31 to 40, incl., not to be built on until easement for street is obtained from adjoining property

Approved by:

Chairman of Planning District

Henry J. Jupper

Vice Chairman of Mesa Co. Planning Commission

Henry J. Jupper

Chairman of Mesa Co. Board of County Commissioners

STATE OF COLORADO)
County of MESA)
I hereby certify that this instrument was
Filed for record

AUG 8 1955

In Book 8 Page 57
ANNIE M. DUNSTON, County Clerk & Recorder
By: Deputy